



**TSX-V: JUGR**  
**FSE: 4JE**  
**OTCPK: JUGRF**



**ON TRACK WITH  
DISCOVERY**



# FORWARD LOOKING STATEMENT

This presentation may contain forward-looking statements, including management's assessments of future plans & operations, expectations of future production, cash flow, earnings, property options, TSX approval and closing of a financing. These statements are based on current expectations that involve a number of risks & uncertainties, which could cause actual results to differ materially from those anticipated.

Forward-looking statements may be identified by the use of words such as “believes”, “anticipates”, “expects”, “estimates”, “may”, “could”, “would”, “will”, or “plan”. Since forward looking statements are based on assumptions and address future events and conditions and property options by their very nature they involve inherent risks and uncertainties.

Actual results relating to, among other things, results of exploration, reclamation, capital costs, and the company's financial condition and prospects, could differ materially from those currently anticipated in such statements for many reasons such as but not limited to; changes in general economic conditions and conditions in the financial markets; changes in demand and prices for the minerals the Company expects to produce; litigation, legislative, environmental and other judicial, regulatory, political and competitive developments; technological and operational difficulties encountered in connection with the Company's activities; and changing foreign exchange rates and other matters discussed in this presentation.

Persons should not place undue reliance on the Company's forward-looking statements. Further information regarding these and other factors, which may cause results to differ materially from those projected in forward-looking statements, are included in the filings by the Company with securities regulatory authorities. The Company does not assume any obligation to update or revise any forward looking statement that may be made from time to time by the Company or on its behalf, except in accordance with applicable securities laws, whether as a result of new information, future events or otherwise.

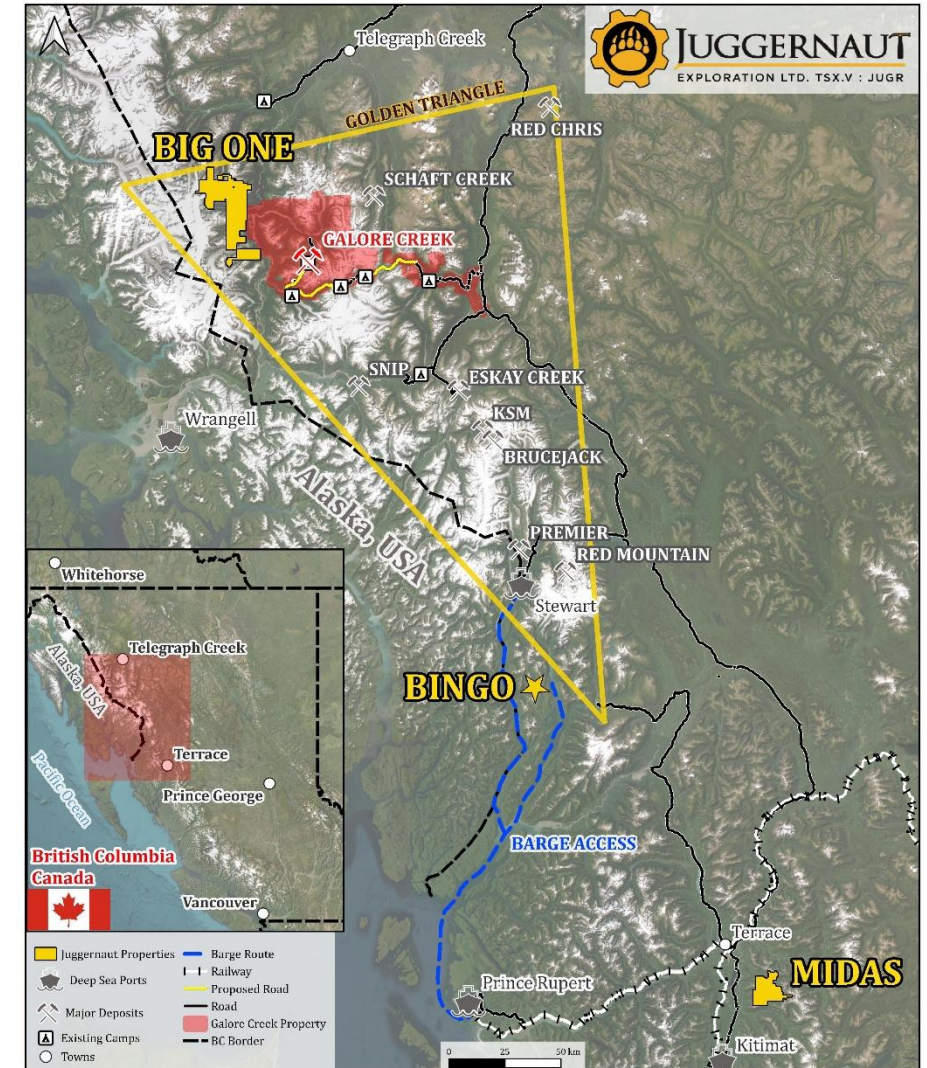
The TSX Exchange has not reviewed and does not accept responsibility for the adequacy or accuracy of the contents of this presentation, that has been prepared by management.

This presentation does not constitute an offer to sell or a solicitation of an offer to buy any securities of the Company in any jurisdiction. Any such offer or solicitation will be made only in accordance with all applicable laws. The common shares of the Company will not be and have not been registered under the United States Securities Act of 1933, as amended, and may not be offered or sold in the United States, or to a U.S. person, absent registration or applicable exemption therefrom.



# CORPORATE OVERVIEW

- Juggernaut Exploration Ltd – **A New Ground Floor Opportunity**
- Focused on Northwestern British Columbia
- **Seasoned Team:** 30 Years of a Proven Track Record of Discovery Culminating in ~1 Billion Dollars of Value
- **Big One (Gold Rich District Scale System located in the Golden Triangle) – 100 % controlled**
- **Midas Property (Eskay-style VMS system) – 100 % owned**
- **Bingo (High Grade Shear Hosted System) – 100 % controlled**
- **Rapid Glacial and Snowpack Abatement** resulting in discoveries





# MANAGEMENT AND DIRECTORS

## **Dan Stuart, CEO, Director**

- >32 years of capital market experience
- >500 million dollars raised in the natural resource sector
- Founding member and capitalizer of several private mineral syndicates  
**J2 creation of Goliath Resources, DSM, YCS, B2, and B-All creation of Juggernaut**
- Institutional clients in both the Americas and Europe

## **William Jung, Director & CFO**

- 35 years of experience in finance and business
- Former chartered accountant involved in management of companies on the TSX
- >25 years experience in the management of companies publicly listed on the TSX

## **Manuele Lazzarotto, PhD, President & COO**

Senior Consulting Geologist

- 8 years experience in the mineral exploration industry taking projects from inception to defined deposits
- Extensive experience in volcanogenic massive sulphide deposits and gold systems.
- Senior member of the team on the Surebet Discovery from inception (Goliath Resources Ltd)

## **Bill Chornobay**

Program Manager

- >30 years proven track record; discoveries resulting in ~1 billion dollars in value.

## **Peter Bryant, Director**

- 45 years of experience in international finance and investment banking
- Former director of investment banking with Standard Chartered Group
- Worked for Hill Samuel Group and Guinness Mahon Holding's, two of the prestigious merchant banking house in London, England

## **Jim McCrea, Director**

- 25 years experience in exploration and mining
- 20 years in mineral resource estimation including Cumberland Resources
- Ore body modelling and resource estimation for the successfully targeted take over company Cumberland Resources Ltd. By Agnico- Eagle Mines Ltd.

## **Chris Verrico, Director**

- >20 years of managing mineral exploration projects in BC, Yukon, Alaska, Nunivut
- Experience as a contractor with extensive northern rural-remote infrastructure construction and contract mining projects

## **Dr. Quinton Hennigh**

Technical Advisor

- World renowned exploration geologist with >30 years of experience with major miners Homestake, Newcrest and Newmont. CHM & President of Novo TSX.V: NVO



# **BIG ONE NEW GOLD RICH DISTRICT SCALE SYSTEM**

**Located in the prolific Golden Triangle**

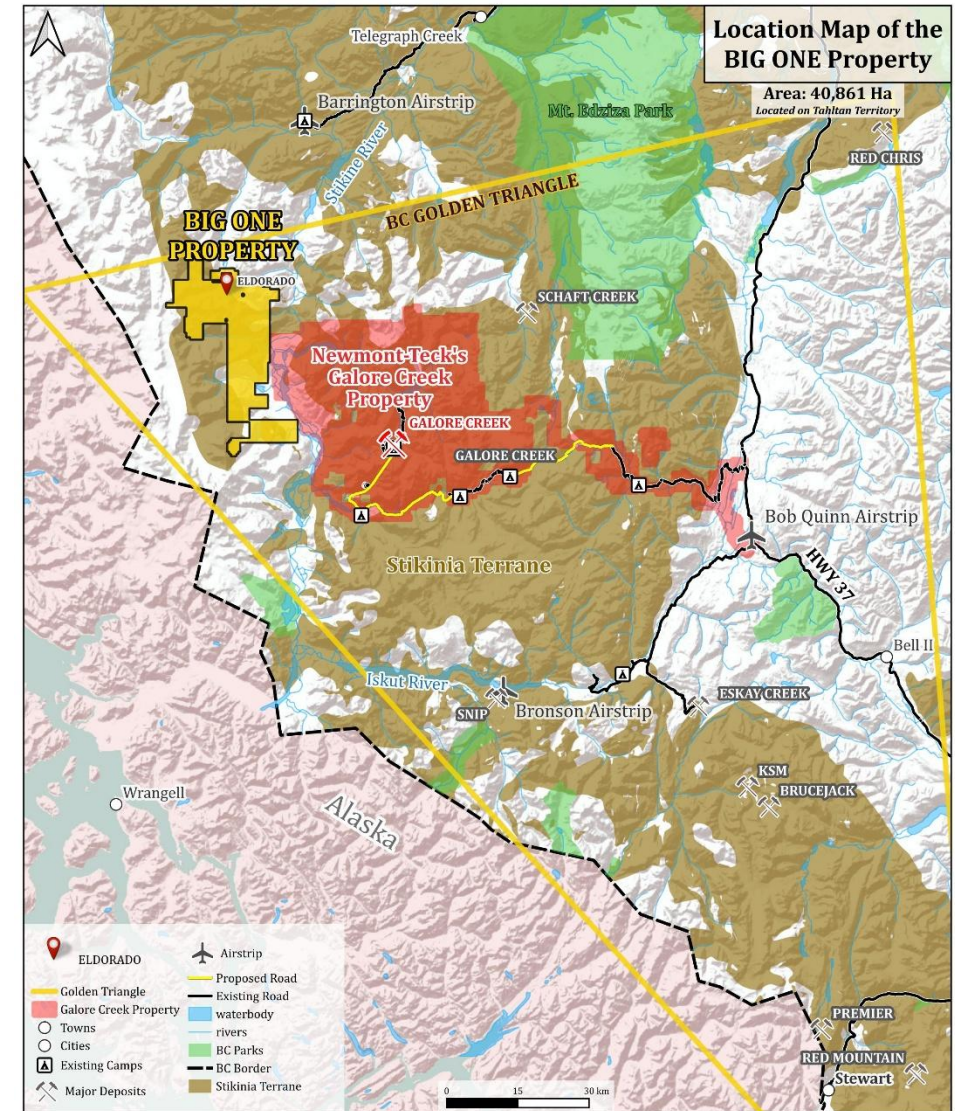
[Property Video 2025](#)

[Property Video 2026](#)



## BIG ONE PROPERTY – 100 % CONTROLLED

- **40,861 ha of world-class geologic terrane** in the heart of the Golden Triangle
- **95 % of the property is unexplored**
- Ongoing **rapid glacial and snowpack abatement**
- Strong potential for discovery today and into the future
- Situated in an area **well known for hosting world class precious metal and porphyry deposits** (Galore Creek, KSM, Shaft Creek, Brucejack,...)
- Area favorable to host mineralized deposits:
  - Extensive propylitic alteration
  - Untested geophysical anomalies
  - Strong silt, soil and rock geochemistry including path finder elements directly related to porphyry systems
  - Key structures and textures
  - Porphyry-style mineralization
  - High-grade polymetallic veins
- The project qualifies for the Critical Mineral Exploration Tax Credit (CMETC)

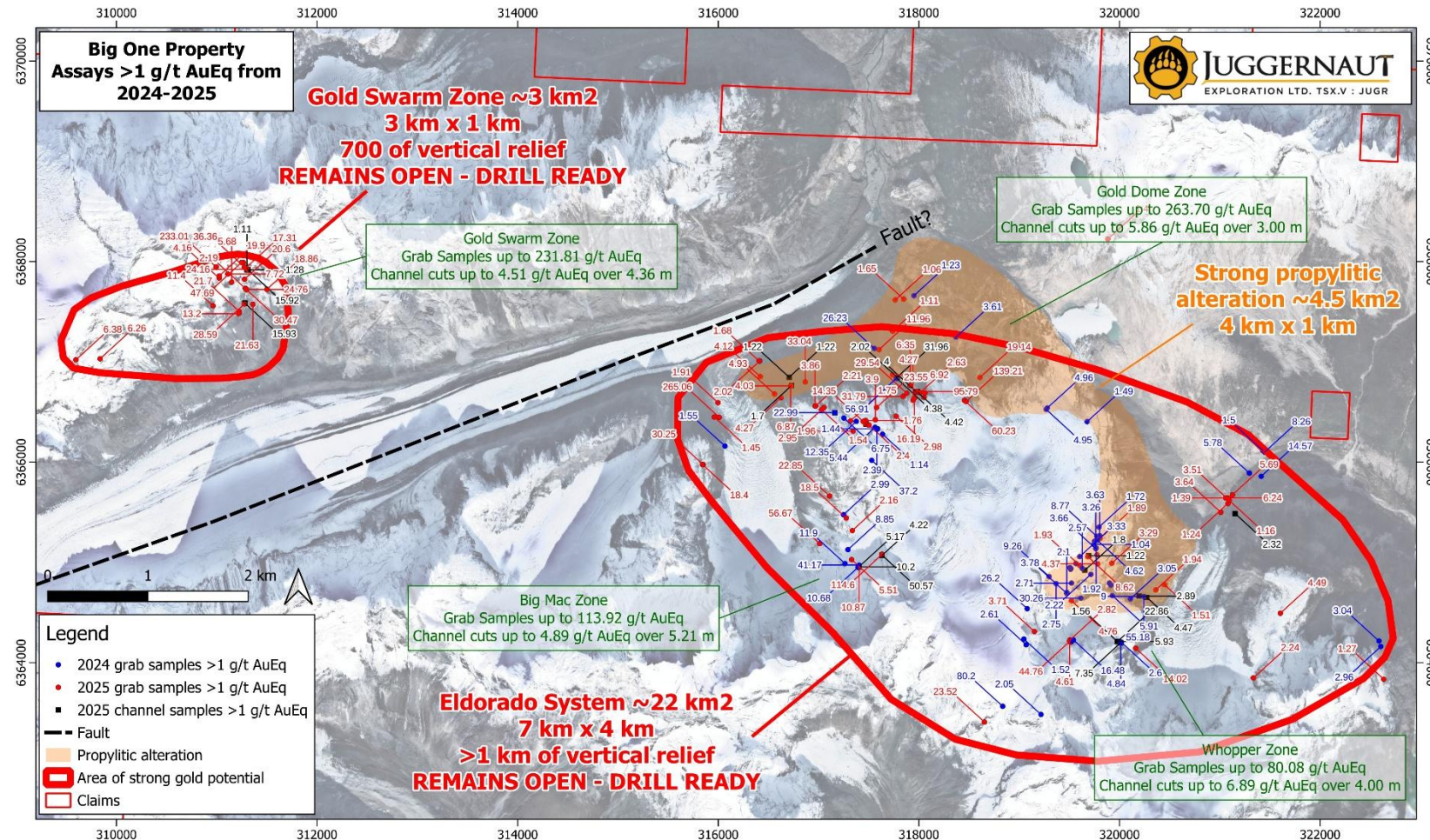


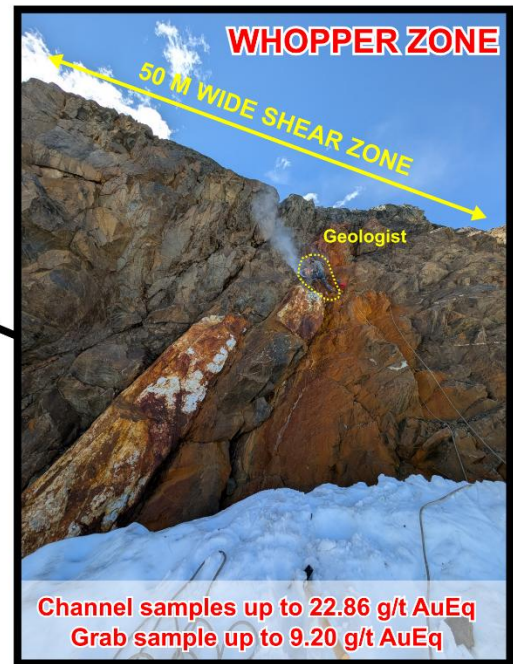
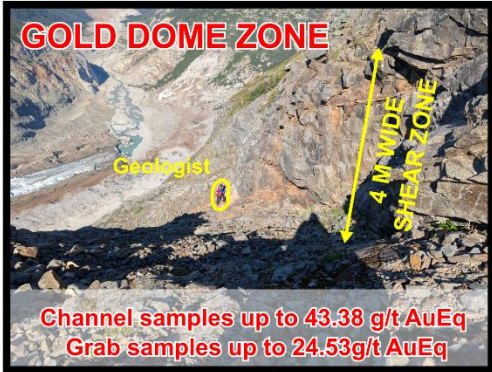
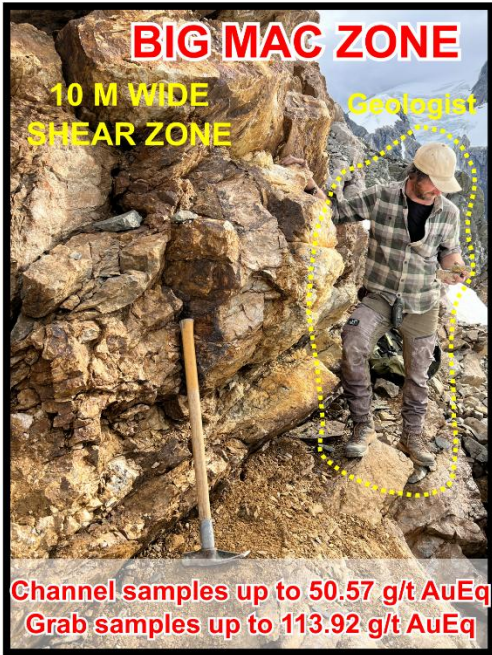


# NEWLY DISCOVERED DRILL READY ELDORADO SYSTEM

(see news release from January 20, 2025 and September 8, 2025)

- ~22 km<sup>2</sup> Gold-silver-copper Eldorado System 7 km x 4 km remains open exposed in outcrop on the fringes of the snowfields/glaciers at Geology Ridge and Decker Creek Glacier.
- ~3 km<sup>2</sup> Gold Swarm Zone remains open potentially offset by a major fault
- Grab samples up to 256.60 g/t Au (8.25 oz/t Au) and 3157 g/t Ag (101.50 oz/t Ag) (see news release from [January 20, 2025](#), [September 8, 2025](#), [November 10, 2025](#))
- >500 quartz-sulphide veins and shears up to 50 m wide and >1 km of strike and vertical relief containing semi-massive to massive chalcopyrite, sphalerite and galena
- Extensive area of propylitic alteration covering an area of 4.5 km<sup>2</sup> (4 km by 1 km)
- Presence of a large mineralizing system or systems at depth indicated to be the origin of the extensive high-grade gold, silver and copper mineralization confirmed on surface

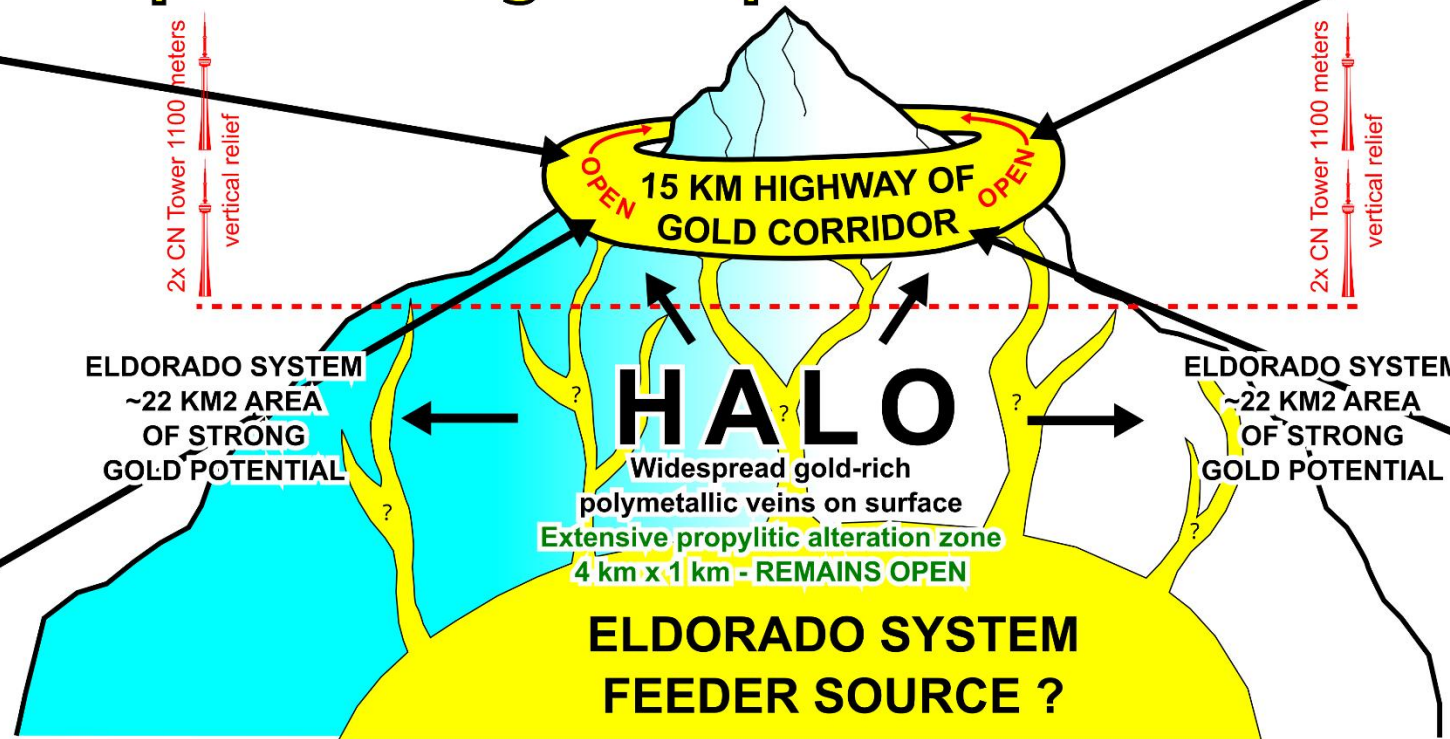




# BIG ONE GOLD DISCOVERY

## TIP OF THE ICEBERG >500 Gold Rich Veins

### Up to 265.06 g/t AuEq DRILL READY





(For details, see news release from January 20, 2025, September 8, 2025, November 10, 2025)

## Eldorado System - Big Mac Zone – Drill Ready

- Measures ~1 km by ~1 km
- Consists of multiple large veins with shear zones that are up to 10 meters wide and exposed on surface for >400 meters with vertical reliefs of up to 360 m where they are covered by snow and ice and remain wide open.
- A channel cut from the Big Mac Zone that assayed **6.63 g/t Au over 3.58 meters, including 17.45 g/t Au over 1.35 m and 47.18 g/t Au or 1.52 oz/t Au over 0.47 m, true width**, was collected 5 meters to the east of a grab sample that assayed **up to 111.35 g/t Au**.
- A second channel cut assayed **3.60 g/t Au over 1.45 meters, including 10.17 g/t Au over 0.50 meters** located 270 m west of the 111.35 g/t Au sample.
- A grab sample, located 450 m to the west, assayed **55.5 g/t Au or 1.78 oz/t Au** from a difficult to access secondary vein located in the nearby cliffs.
- 14 out of 26 samples (54%) from the Big Mac Zone assayed > 1 g/t Au. The Big Mac Zone is drill-ready

[Big Mac Video](#)

Sample ID	Year	Sample Type	Au (g/t)	Ag (g/t)	Cu (%)	Pb (%)	Zn (%)	AuEq (g/t)
M220659	2025	Grab	111.35	159.00	0.02	3.88	0.01	113.92
M220561	2025	Grab	55.50	38.62	0.09	2.02	0.44	56.47
M217807	2025	Channel	47.18	156.00	0.01	9.28	0.07	50.57
D751216	2024	Grab	37.98	75.50	0.24	5.72	3.93	41.46
D750624	2025	Grab	21.62	45.06	0.00	2.33	0.16	22.58
D750625	2025	Grab	18.32	6.19	0.01	0.01	0.55	18.54
M217784	2025	Channel	10.83	1.88	0.00	0.00	0.04	10.87
D750608	2024	Grab	10.62	3.20	0.00	0.01	0.01	10.67
M217785	2025	Channel	10.17	1.97	0.00	0.00	0.01	10.20
D751284	2024	Float	6.34	47.70	0.03	6.78	0.59	8.66
D751435	2025	Grab	5.19	10.98	0.00	0.54	0.20	5.46
M217788	2025	Channel	5.15	1.29	0.01	0.01	0.00	5.17
M217805	2025	Channel	4.18	2.82	0.00	0.03	0.01	4.22
D751285	2024	Grab	3.74	91.20	7.96	0.01	0.01	13.18



(For details, see news release from January 20, 2025, September 8, 2025, November 10, 2025)

## Eldorado System - Gold Dome Zone – Drill Ready

- Measures ~3 km by ~1.5 km
- Consists of clusters of multiple extensive gold-rich shear zones, veins, and stockwork that are up to 4 meters wide and exposed on surface for >1 km with a vertical relief of ~600 m and remain open.
- Grab samples assayed **up to 256.60 g/t Au or 8.25 oz/t Au** and a channel cut assayed **5.45 g/t Au over 2.77 meters** from a vein exposed on surface in the adjacent difficult to reach cliff face for ~200 meters.
- The mineralized veins contain seams of semi-massive galena, sphalerite, chalcopyrite and pyrite.
- 46 samples out of 191 (24%) assayed > 1 g/t Au. Multiple targets in the Gold Dome Zone are drill ready.

[Gold Dome Video](#)

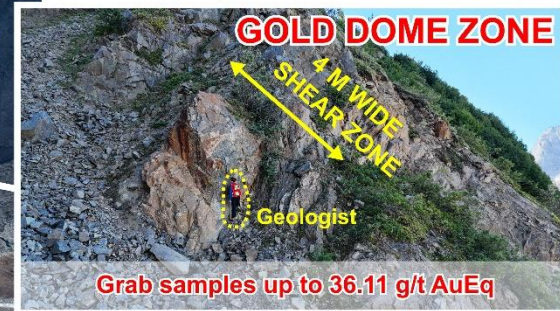
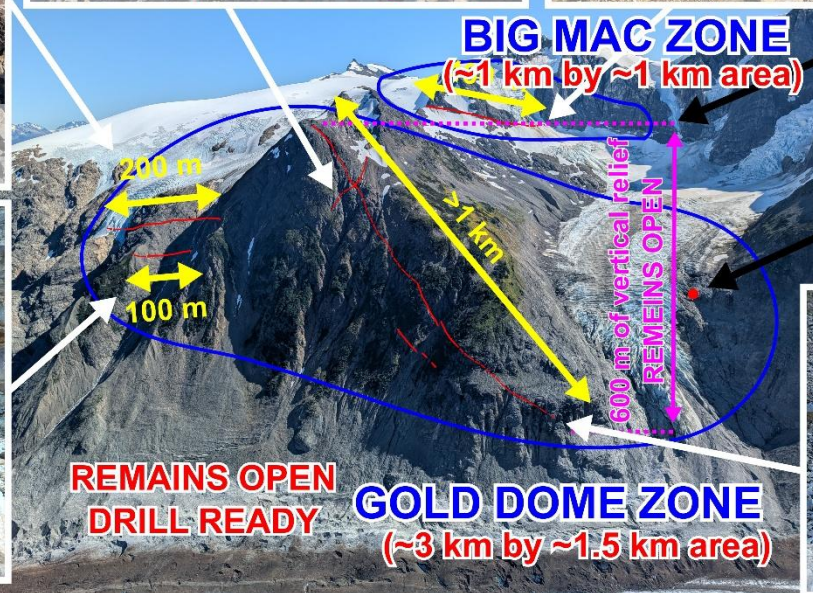
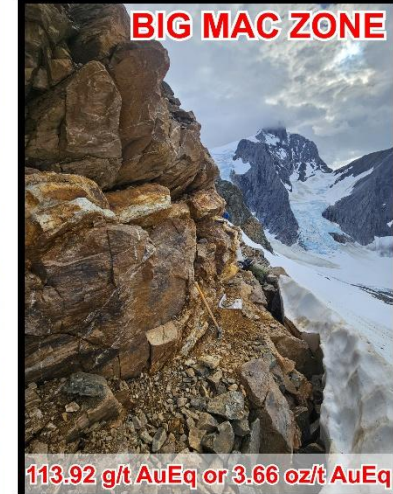
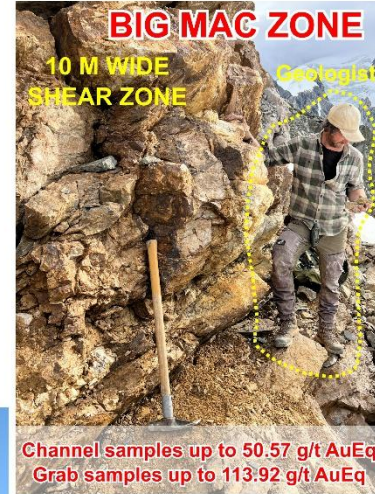
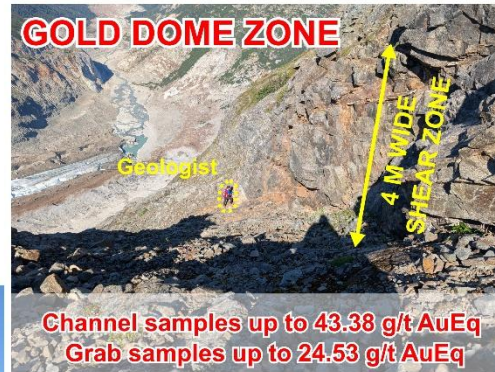
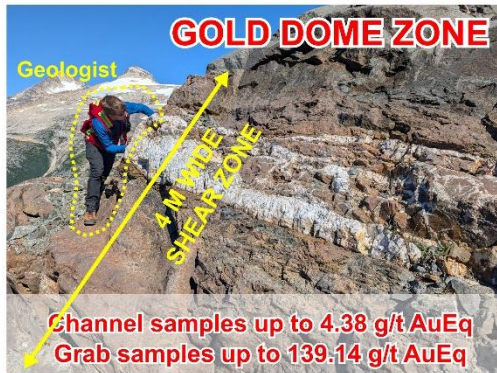
Sample ID	Year	Sample Type	Au (g/t)	Ag (g/t)	Cu (%)	Pb (%)	Zn (%)	AuEq (g/t)
M224886	2025	Float	256.60	546.00	0.43	0.41	0.01	263.70
D751423	2025	Grab	138.70	29.96	0.08	0.02	0.02	139.14
M224956	2025	Grab	95.04	49.60	0.02	0.02	0.01	95.67
D751407	2025	Grab	68.57	115.00	0.35	1.25	6.53	72.02
D751424	2025	Grab	60.08	9.57	0.01	0.00	0.01	60.21
D751966	2024	Grab	56.54	23.30	0.03	0.02	0.03	56.84
M217579	2025	Channel	34.96	415.00	0.02	21.13	0.06	43.38
D751156	2024	Grab	33.72	177.00	0.27	2.71	0.27	36.11
M217613	2025	Channel	31.68	9.40	0.16	0.00	0.10	31.96
M224961	2025	Grab	31.25	13.98	0.39	0.00	0.00	31.77
D751402	2025	Grab	29.23	11.44	0.17	0.01	0.00	29.52
D751375	2025	Grab	28.47	70.39	0.15	2.43	0.40	29.94
D751964	2024	Talus	23.47	110.00	1.37	0.01	0.00	26.07
D751357	2025	Grab	18.06	333.00	12.05	0.00	0.14	32.65
D751374	2025	Talus	16.60	66.43	0.38	1.82	0.60	18.17
M224959	2025	Grab	15.94	16.54	0.00	0.01	0.01	16.15
M220602	2025	Grab	11.92	2.04	0.01	0.00	0.04	11.96
M224957	2025	Grab	9.65	15.14	0.03	0.18	0.48	10.00
M224905	2025	Talus	9.48	646.00	5.48	0.05	0.05	22.15
M220601	2025	Grab	6.77	5.19	0.08	0.00	0.01	6.91
D751403	2025	Float	6.13	14.47	0.00	0.02	0.01	6.31
D751158	2024	Grab	4.60	30.70	0.04	1.36	0.02	5.31
D750632	2025	Float	4.44	20.01	0.02	0.74	0.01	4.83
M217608	2025	Channel	4.35	1.50	0.00	0.00	0.01	4.38
M217643	2025	Channel	4.35	3.99	0.01	0.01	0.04	4.42
D751406	2025	Grab	4.07	12.47	0.00	0.02	0.05	4.24
D750621	2025	Grab	3.76	223.00	14.45	0.00	0.11	19.09
M217637	2025	Channel	3.63	10.25	0.03	0.53	0.59	4.00
D750192	2024	Grab	3.44	220.00	6.61	0.00	0.01	12.91
M217727	2025	Channel	2.73	2.04	0.01	0.03	0.01	2.77
M224963	2025	Grab	2.63	9.40	0.09	0.08	0.01	2.84
D751404	2025	Grab	2.61	1.26	0.00	0.00	0.00	2.63
M224851	2025	Chip	2.61	38.00	0.13	1.99	0.85	3.70
M224855	2025	Grab	2.23	30.34	0.03	0.95	0.20	2.83
M224902	2025	Subcrop	2.02	10.72	0.01	0.90	0.02	2.31
M217618	2025	Channel	1.94	6.23	0.00	0.00	0.01	2.02
D751195	2024	Channel	1.61	38.20	0.82	1.27	0.71	3.37
M217724	2025	Channel	1.50	2.88	0.01	0.06	0.01	1.55
M224901	2025	Grab	1.46	12.66	0.02	0.22	0.01	1.66
M217636	2025	Channel	1.33	12.99	0.01	0.07	0.01	1.52
D751251	2024	Grab	1.27	11.10	0.11	0.02	0.02	1.53
D750629	2025	Grab	1.23	39.89	0.15	0.00	0.58	1.99
M224852	2025	Grab	1.08	50.66	0.16	0.93	0.29	2.05
D750852	2025	Subcrop	1.07	860.00	0.01	2.12	1.32	12.20
M224904	2025	Grab	1.04	187.00	0.00	0.43	0.17	3.43



(For details, see news release from January 20, 2025, September 8, 2025, November 10, 2025)



All disclosure of a scientific or technical nature was prepared by, or under the supervision of Rein Turna, P.Geo, who is a "Qualified Person" under National Instrument 43-101.





(For details, see news release from January 20, 2025, September 8, 2025, November 10, 2025)

**JUGGERNAUT**  
EXPLORATION LTD. TSX.V: JUGR

**37.98 g/t Au**  
**70.37 g/t Ag**

**>50 m Strike Length**

**4 m**

**Geologist**

**REMAINS OPEN**

**REMAINS OPEN**

**B+ ALL SYNDICATE LTD.**  
ON TRACK FOR DISCOVERY

**D751216**

**Galena, Chalcopyrite, Pyrite**

**BIG MAC ZONE**  
**(~1 km by ~1 km area)**

**REMAINS OPEN**  
**DRILL READY**

**N1230659**

**111.35 g/t Au or 3.58 oz/t Au**

**REMAINS OPEN**  
**DRILL READY**

**4 m WIDE SHEAR ZONE**

**GOLD DOME ZONE**  
**(~3 km by ~1.5 km area)**

**95.04 g/t Au or 3.06 oz/t Au**

**JUGGERNAUT**  
EXPLORATION LTD. TSX.V: JUGR

**REMAINS OPEN**

**10.83 g/t Au**

**Geologist**

**10m WIDE SHEAR**

**Big Mac Zone**  
**10 meter wide shear with**  
**>400 meter strike length**

**JUGGERNAUT**  
EXPLORATION LTD. TSX.V: JUGR

**BIG MAC ZONE**  
**(~1 km by ~1 km area)**

**55.50 g/t Au**

**REMAINS OPEN**  
**DRILL READY**

**GOLD DOME ZONE**  
**(~3 km by ~1.5 km area)**

**REMAINS OPEN**  
**DRILL READY**

**138.70 g/t Au or 4.46 oz/t Au**

**JUGGERNAUT**  
EXPLORATION LTD. TSX.V: JUGR



(For details, see news release from January 20, 2025, September 8, 2025, November 10, 2025)

## Eldorado System - Whopper Zone – Drill Ready

- Measures ~2 km by ~2 km
- Consists of multiple veins up to 5 meters wide and extensive shear zones up to 50 meters wide that are exposed on surface for >500 meters with vertical reliefs of up to 780 meters.
- Channel cuts from the Whopper Zone **assayed up to 39.84 g/t Au or 1.28 oz/t Au over 0.50 m within a larger interval that assayed 6.71 g/t Au over 3.06 meters.**
- Multiple grab collected upslope of the channel cut along a 5 meter wide vein hosted in an 8 meter wide shear zone along 50 meters of exposed vein assayed **up to 13.12 g/t Au.**
- The shear zones are difficult to sample due to the exposed cliffs and comprise numerous lenses of semi-massive to massive galena, chalcopyrite, sphalerite and pyrite contained in quartz veins and stockwork and remain open on either side, where they are covered by snow and ice.
- 32 samples out of 158 (20%) assayed > 1 g/t Au. Multiple targets in the Whopper zone are drill-ready

[Whopper Video](#)

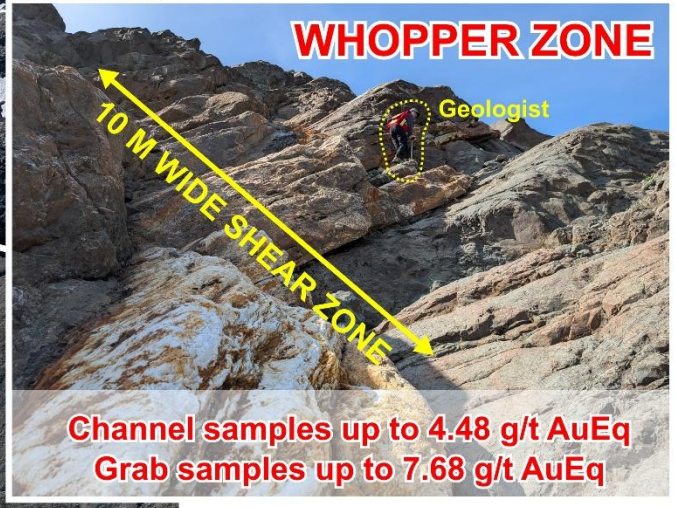
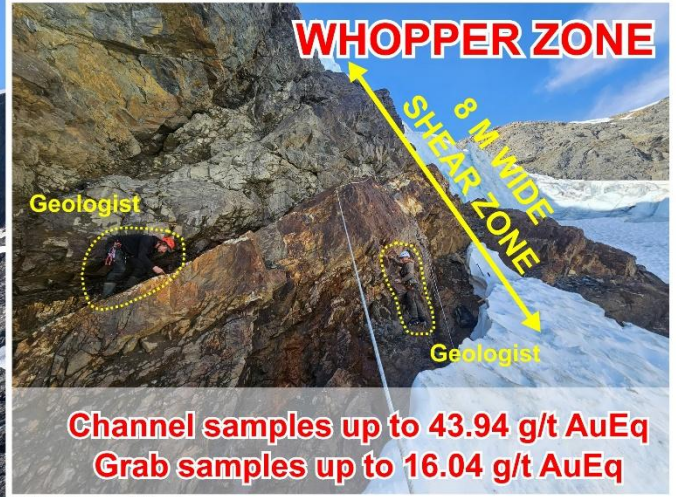
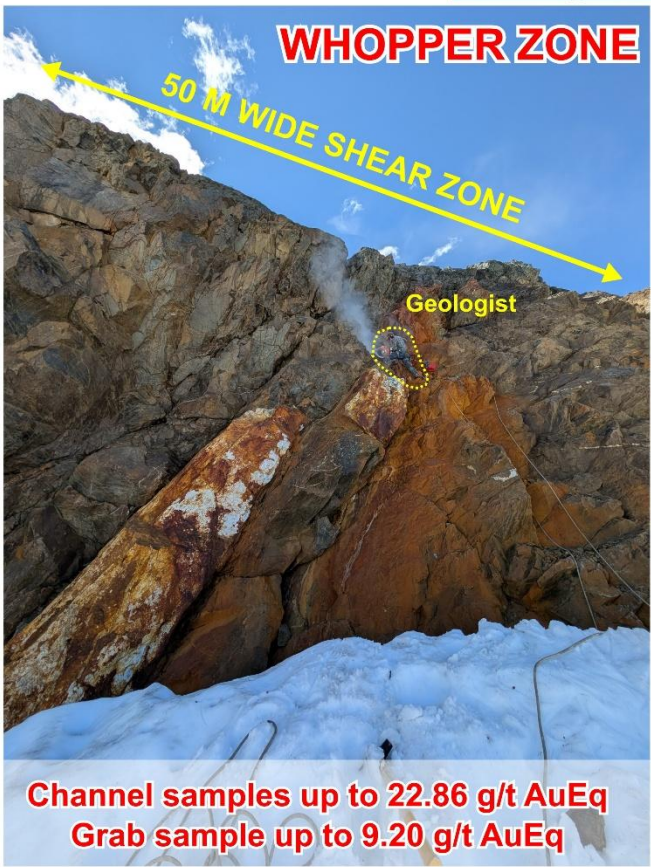
Sample ID	Year	Sample Type	Au (g/t)	Ag (g/t)	Cu (%)	Pb (%)	Zn (%)	AuEq (g/t)
D751282	2024	Grab	79.01	58.90	0.13	0.43	0.80	80.08
M217601	2025	Channel	39.84	333.00	0.02	0.07	0.06	43.94
D751163	2024	Float	23.97	116.00	0.02	2.16	0.13	24.53
M217567	2025	Channel	17.00	461.00	0.04	0.87	0.31	22.86
D750394	2024	Grab	13.12	163.00	0.51	1.65	0.42	16.04
D751191	2024	Channel	12.12	2810.00	0.02	8.04	0.00	37.20
D751975	2024	Grab	10.62	198.00	0.00	0.77	0.01	13.10
D751365	2025	Grab	9.35	566.00	0.01	25.22	0.06	20.24
D750389	2024	Grab	8.10	1420.00	1.11	0.15	2.70	26.01
M217571	2025	Channel	6.06	89.91	0.04	0.01	0.67	7.35
D750395	2024	Grab	6.01	105.00	0.01	0.06	0.09	7.42
D750198	2024	Float	6.01	34.10	0.14	0.04	15.30	11.21
D751154	2024	Grab	5.72	218.00	0.22	1.81	1.34	9.20
D751969	2024	Float	5.59	185.00	0.40	1.91	0.98	8.82
D751939	2024	Channel	5.06	96.30	0.00	0.05	0.03	6.10
D751112	2024	Float	4.94	59.50	0.00	0.31	0.02	5.70
M217566	2025	Channel	4.40	118.00	0.02	0.13	0.22	5.93
M217573	2025	Channel	4.27	16.46	0.00	0.00	0.00	4.48
D751943	2024	Grab	4.00	128.00	0.30	15.35	8.35	11.32
D751192	2024	Channel	3.39	366.00	0.01	0.11	0.00	7.68
D751215	2024	Grab	2.96	102.00	0.04	0.04	2.15	4.84
D751699	2024	Grab	2.15	68.90	0.01	2.63	0.06	3.51
D751165	2024	Grab	1.95	6.80	0.00	0.01	0.01	1.99
D751426	2025	Grab	1.91	1.49	0.00	0.00	0.01	1.94
D751213	2024	Float	1.65	51.40	0.02	0.31	0.02	2.41
D751109	2024	Grab	1.65	89.50	0.10	0.01	0.03	2.73
M220559	2025	Grab	1.55	262.00	0.01	13.83	0.08	6.94
D751968	2024	Grab	1.49	53.50	0.01	1.68	0.13	2.55
D751972	2024	Channel	1.42	47.30	0.03	3.43	0.68	2.90
D751993	2024	Grab	1.20	11.90	0.03	0.35	0.17	1.48
D750751	2025	Grab	1.16	82.41	0.03	4.01	2.80	3.48
D750393	2024	Grab	1.01	41.30	0.02	1.79	0.37	1.97



(For details, see news release from January 20, 2025, September 8, 2025, November 10, 2025)



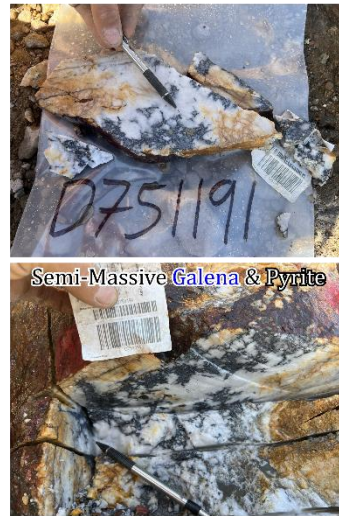
# WHOPPER ZONE REMAINS OPEN - DRILL READY (~2 km by ~2 km area)



All disclosure of a scientific or technical nature was prepared by, or under the supervision of Rein Turna, P.Geo, who is a "Qualified Person" under National Instrument 43-101.



(For details, see news release from January 20, 2025, September 8, 2025, November 10, 2025)



Semi-Massive Galena & Pyrite





(For details, see news release from January 20, 2025, September 8, 2025, November 10, 2025)

## Gold Swarm Zone – Drill Ready

- The zone has been recently exposed by glacial retreat and covers an area of ~3 km by ~1 km and extends over a vertical relief of 700 m and remains open in all directions.
- Contains clusters of shear zones and veins up to 4.5 meters wide with grab samples that assayed **up to 226.94 g/t Au or 7.30 oz/t Au**
- Channel cut that assayed **4.02 g/t Au over 4.36 m** containing substantial amounts of semi-massive to massive chalcopyrite, galena and sphalerite.
- 27 samples out of 44 (61%) assayed > 1 g/t Au. The Gold Swarm Zone is drill-ready.

[Gold Swarm Video](#)

Sample ID	Year	Sample Type	Au (g/t)	Ag (g/t)	Cu (%)	Pb (%)	Zn (%)	AuEq (g/t)
M217656	2025	Float	226.94	335.00	0.00	4.99	0.01	231.81
D750642	2025	Grab	43.99	102.00	0.00	9.19	0.44	46.79
D751373	2025	Grab	21.44	172.00	0.07	15.92	6.21	27.59
M224982	2025	Chip	21.17	20.30	0.02	0.92	0.03	21.58
M217705	2025	Channel	20.78	48.45	0.62	2.37	1.05	22.53
M217655	2025	Grab	19.64	15.34	0.00	1.37	2.93	20.74
D750644	2025	Grab	18.47	12.54	0.00	0.89	0.01	18.77
D750639	2025	Grab	18.12	174.00	3.36	2.91	0.03	23.63
M217657	2025	Grab	18.11	88.95	0.00	2.08	0.01	19.53
D750641	2025	Grab	15.52	55.65	0.63	1.85	0.08	17.06
M217852	2025	Channel	15.39	20.95	0.04	1.02	0.37	15.93
M217649	2025	Channel	14.96	22.24	0.41	0.64	0.95	15.92
D750638	2025	Grab	14.46	621.00	0.11	54.39	0.44	30.79
M224983	2025	Grab	14.06	191.00	0.15	17.27	4.50	20.31
M224883	2025	Grab	11.07	20.98	0.03	0.01	0.00	11.36
D751372	2025	Grab	7.44	16.56	0.00	0.17	0.01	7.67
D750643	2025	Grab	7.36	2.04	0.00	0.03	0.02	7.40
M217589	2025	Channel	5.81	19.08	0.35	0.37	0.28	6.48
M224981	2025	Grab	5.31	13.36	0.01	0.69	0.04	5.60
M217648	2025	Channel	4.69	7.08	0.26	0.44	0.43	5.17
M217702	2025	Channel	4.30	38.77	0.58	2.16	0.10	5.64
D751417	2025	Grab	3.38	46.67	0.00	0.41	0.00	4.02
D750704	2025	Grab	2.59	325.00	0.35	22.97	1.56	10.83
M217853	2025	Channel	1.75	2.88	0.00	0.02	0.06	1.81
M217592	2025	Channel	1.69	10.63	0.17	0.02	0.01	1.97
D751371	2025	Grab	1.56	39.69	0.00	0.20	0.00	2.08
M217591	2025	Channel	1.17	3.78	0.06	0.04	0.03	1.28
M217704	2025	Channel	1.07	1.61	0.02	0.01	0.02	1.11



(For details, see news release from January 20, 2025, September 8, 2025, November 10, 2025)



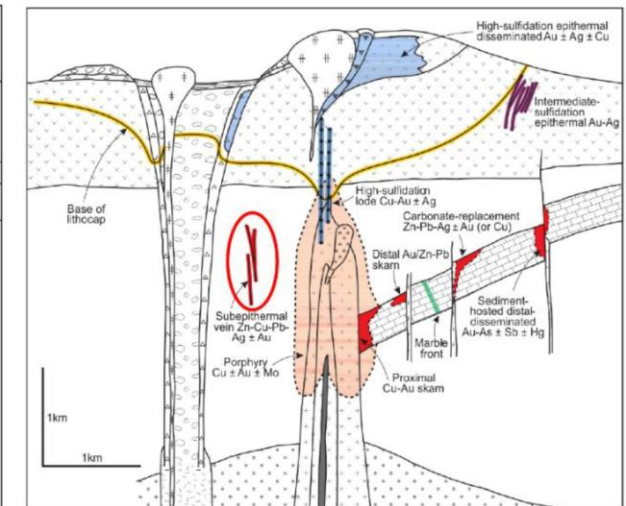
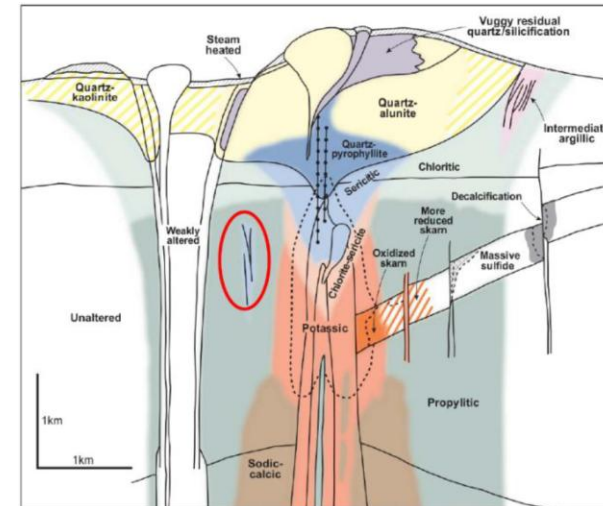
All disclosure of a scientific or technical nature was prepared by, or under the supervision of Rein Turna, P.Geo, who is a "Qualified Person" under National Instrument 43-101.





## PORPHYRY SYSTEM ALTERATION AND MINERALIZATION ?

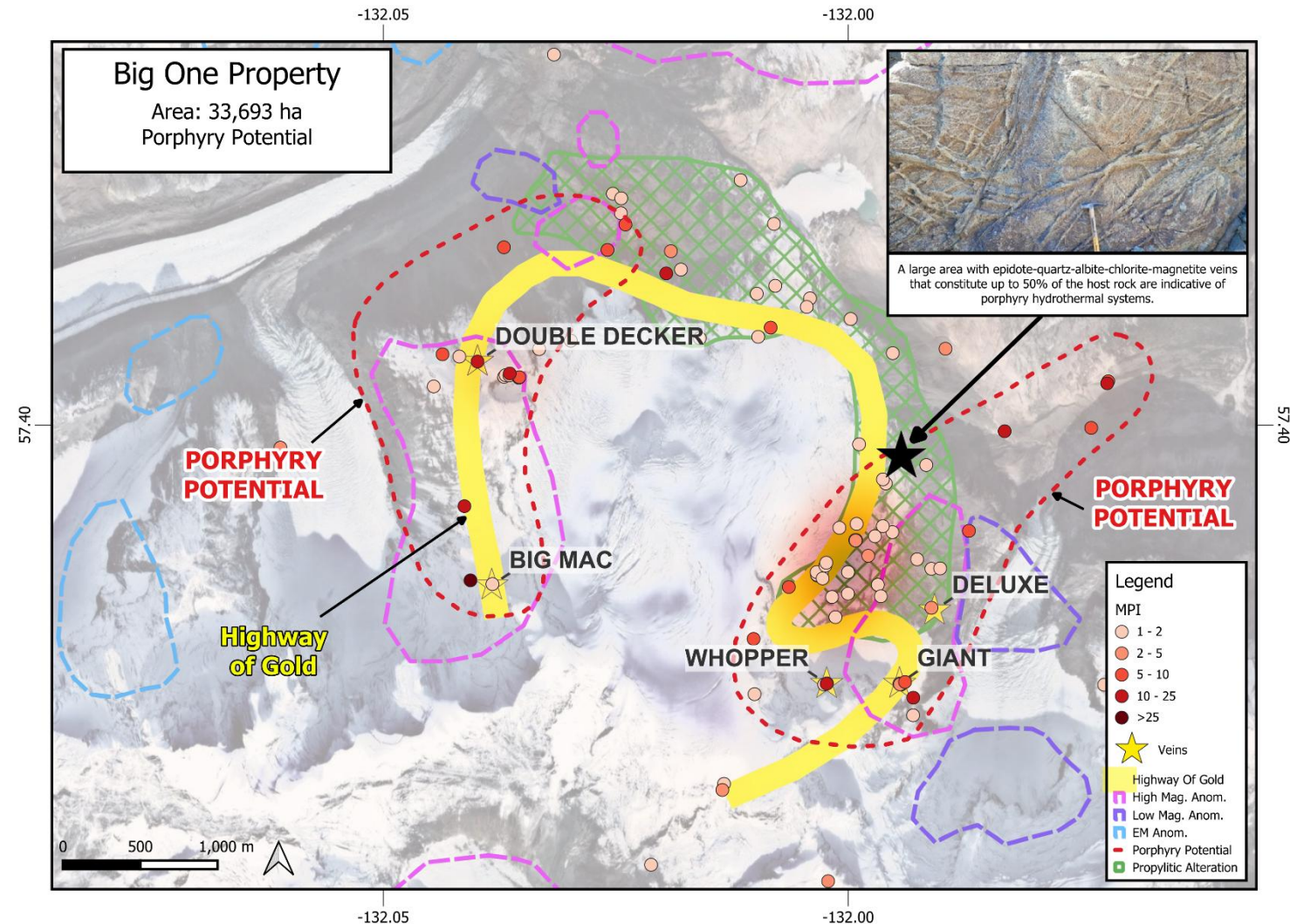
- Large area with within the diorite found to host **epidote-quartz-albite-chlorite-magnetite veins** that in places constitute up to 50% of the host rock, **indicative of porphyry-type magmatic hydrothermal systems**
- The vein assemblages are **typical of propylitic alteration found distal to high-grade potassic cores** of porphyry systems
- **Abundant base metal rich quartz veins** found around the Big One property may be **distal expression of porphyry mineralization**
- Significant **alteration and veining indicative of porphyry-style mineralization** observed at the Big One property





## PORPHYRY FINGERPRINT ?

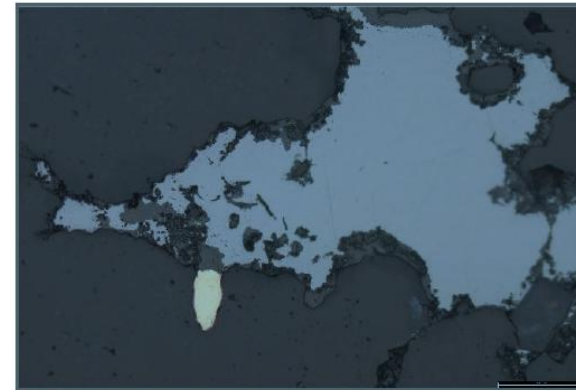
- **Two areas with porphyry potential** have been identified
- **Distribution of geochemical path finder elements overlaps with strong geophysical anomalies as well as multiple gold-rich polymetallic veins**
- Elevated concentrations of **antimony (Sb), tungsten (W), tellurium (Te), molybdenum (Mo) and bismuth (Bi)**
- Calculated indexes for path finder elements and base metals (Cu, Zn, Pb)
- Indicates the potential for a **large porphyry system** at Eldorado



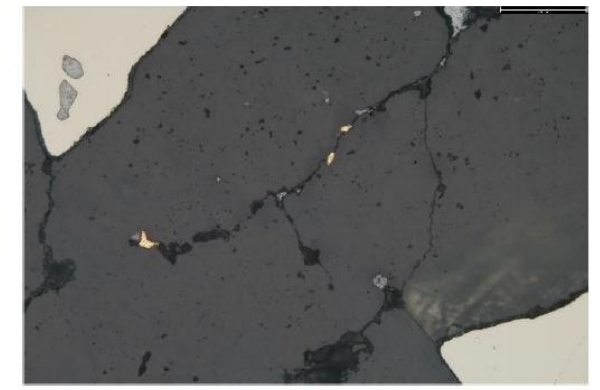


## Petrography and Geochemistry

- Results from an independent petrographic study by the Colorado School of Mines confirmed that **gold occurs as relatively pure, free milling coarse gold up to 150 microns in size.**
- **Fluid inclusions confirm a magmatic source to the gold, silver copper mineralization**, potentially a porphyry as seen next-door at the world-class Galore Creek copper, gold, silver, porphyry deposit.
- The overall geochemistry of the gold-rich mineralized veins is **clean with no occurrence of deleterious elements such as mercury or arsenic.**



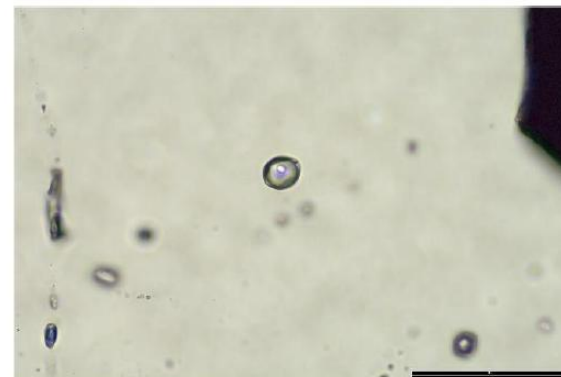
Free milling gold associated with galena.



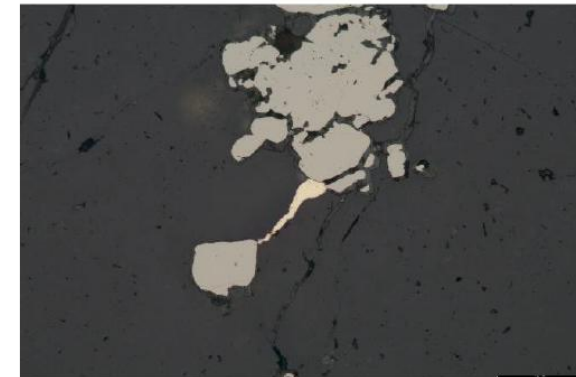
Free milling gold filling fracture in quartz between pyrite.



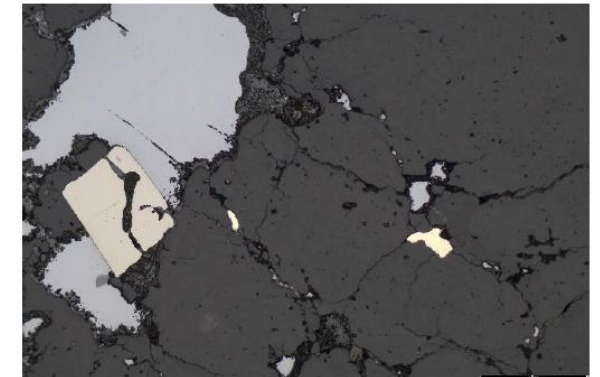
Three-phase fluid inclusion containing aqueous fluid, liquid and gaseous CO<sub>2</sub>.



Three-phase fluid inclusion with minor aqueous liquid and abundant liquid CO<sub>2</sub>.



Free milling gold filling fracture in quartz between pyrite.

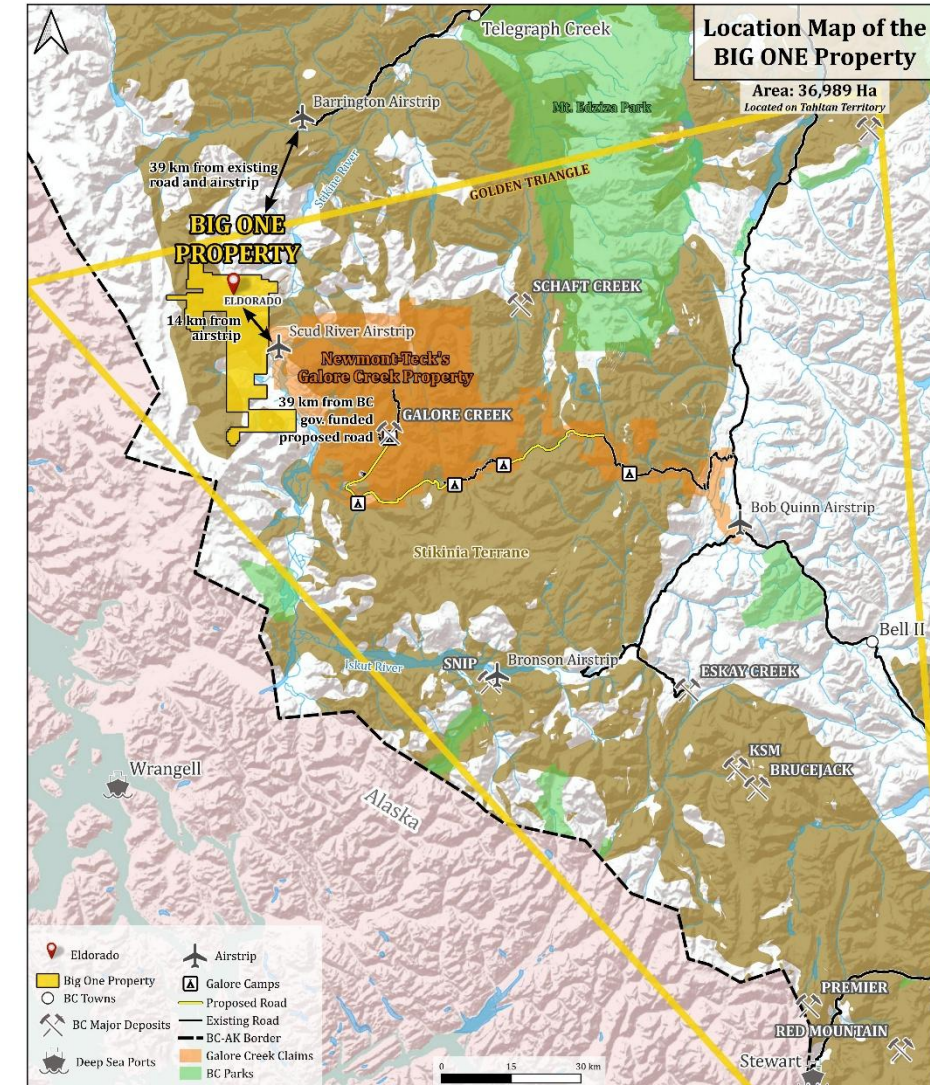


Free milling gold filling fractures in quartz.

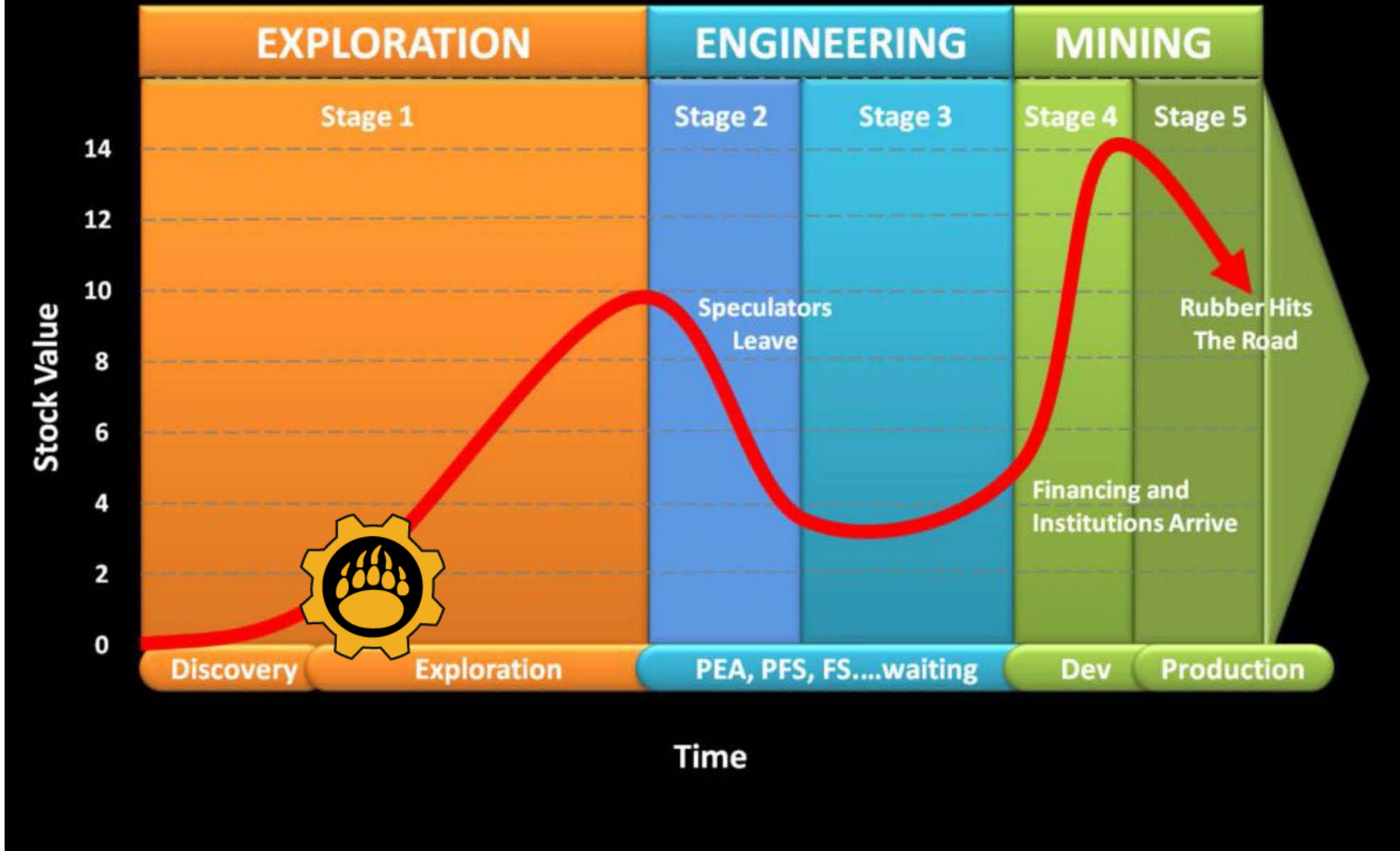


## NUMEROUS SIMILARITIES BETWEEN BIG ONE AND GALORE CREEK

- ✓ Extensive propylitic alteration zones
- ✓ Porphyry textures
- ✓ Same geologic setting – Stikinia Terrane (~Jurassic Age)
- ✓ Intrusive units (diorite, monzonite)
- ✓ Characteristics N and NE trending structure (associated with mineralization)
- ✓ High-density of polymetallic quartz-sulphide veining
- ✓ High-grade gold-silver hydrothermal and epithermal veins
- ✓ Buried geophysical anomalies
- ✓ Strong pathfinder element distribution as well as metals ratios consistent with porphyry systems



# LASSONDE CURVE – JUNIOR MINER LIFE CYCLE





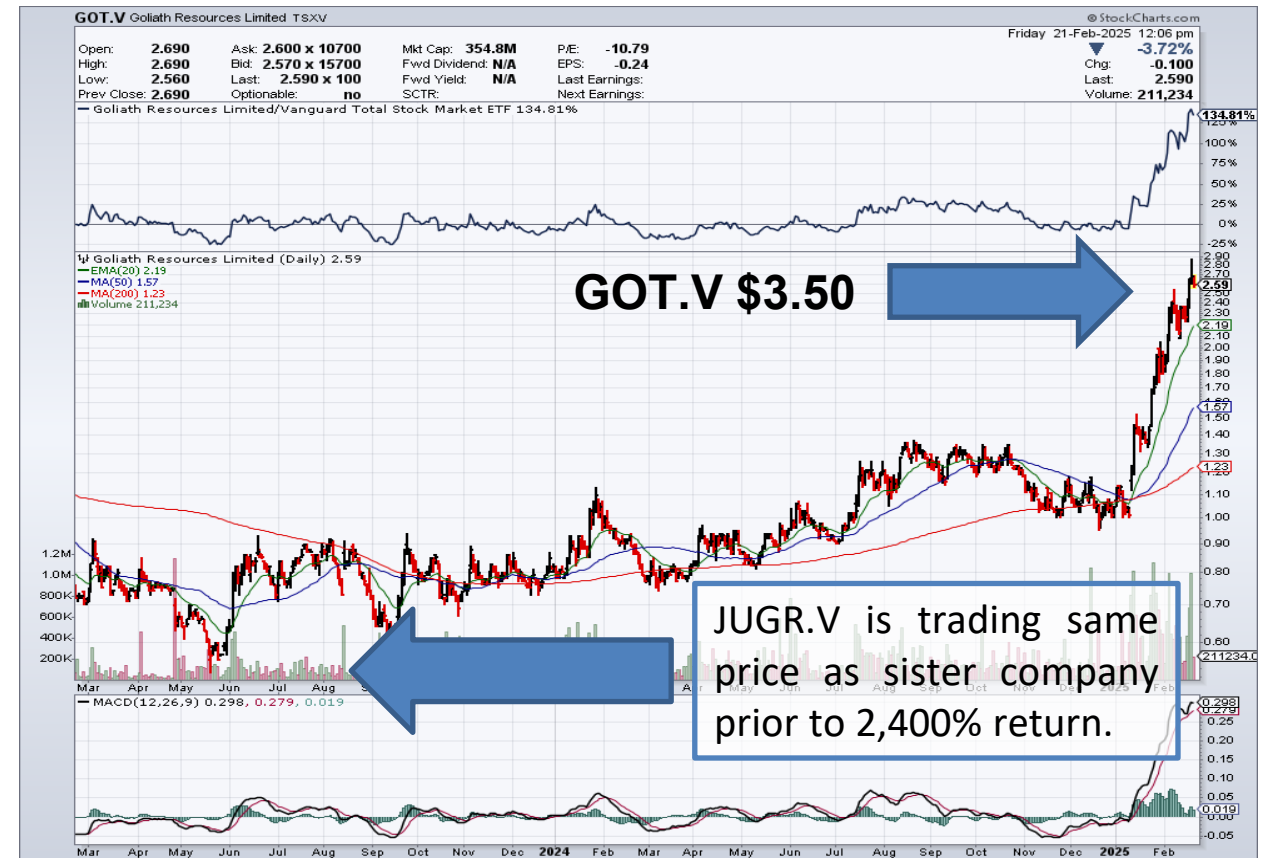
# The Opportunity, Why Buy ?

Juggernaut's sister company, Goliath, generated 2,400% for investors in 36 months. Participants in their seed placement with a warrant received a 3,500%. Goliath currently has a MCAP of \$500M.

Juggernaut has 37,709,428 shares outstanding. Juggernaut has a MCAP of \$45M.

Juggernaut has Crescat Capital / Quinton Hennigh as 19.31% shareholders & technical support.

Juggernaut has \$23,000,000 in Cash and is fully funded to Q2 2028 for 21,000 meters of drilling.





## SHARE STRUCTURE AS OF May 1, 2026

**Common shares issued and outstanding: 37,709,428**  
**Fully diluted share capital: 64,727,826 = \$48,573,625**

Details of share purchase warrants outstanding on May 1, 2026:

Number of Warrants	Exercise Price CAD	Expiry Date
1,209,262	\$2.50	22-Nov-26
140,246	\$2.50	05-Dec-26
1,754,102	\$1.00	06-May-27
3,175,735	\$1.40	11-Jun-27
2,246,093	\$2.08	19-Mar-28
300,000	\$0.85	20-Dec-28
311,925	\$0.85	16-May-27
11,048,770	\$0.75	16-May-30
120,000	\$0.75	02-Jun-27
2,040,000	\$0.75	02-Jun-30
103,124	\$0.84	17-Jun-27
1,718,731	\$0.84	17-Jun-30
1,562,500	\$0.84	16-Jul-30
<b>Total Warrants</b>	<b>Avg. Weighted Price</b>	
<b>23,634,395</b>	<b>\$0.89</b>	

Details of stock options outstanding on May 1, 2026:

Options Outstanding	Exercise Price	Expiry Date
232,500	\$3.60	14-May-26
20,000	\$2.20	08-Mar-27
283,100	\$1.60	14-Jun-28
103,000	\$1.60	01-Dec-28
436,050	\$1.10	13-Jun-29
36,353	\$0.85	05-Feb-30
873,000	\$1.63	02-Jan-31
1,400,000	\$0.78	13-Jun-35
<b>Total Options</b>	<b>Avg. Weighted Price</b>	
<b>3,384,003</b>	<b>\$1.34</b>	

### CAPITAL STRUCTURE

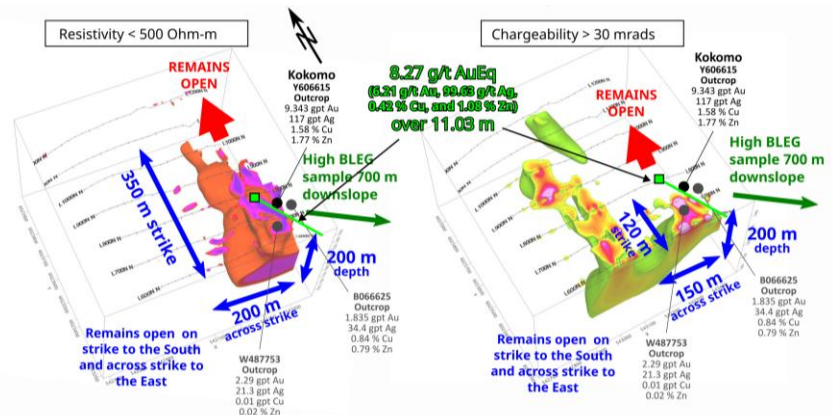
- No Debt
- Management, insiders, and accredited investors ~ 70%
- Strong support from institutions
- Crescat Capital 19.13%
- 3 Month VWAP \$1.22 / Shares Traded 9,521,355



# MIDAS PROPERTY

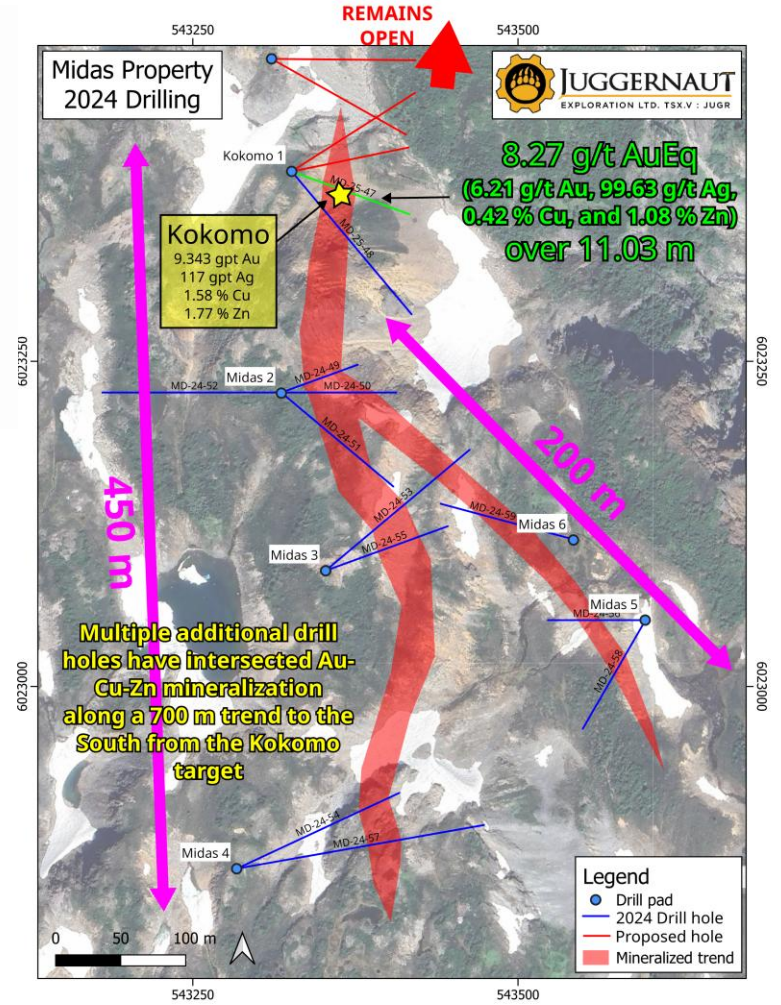
## 100 % OWNED

- 20,803 ha of world-class geologic setting with strong potential for VHMS Eskay Creek style mineralization
- Intercepted significant VHMS style mineralization at Kokomo, remains open to the north
- Drilling Highlights
  - MD-24-47 intersected **8.27 g/t AuEq over 11.03 m** (6.21 g/t Au, 99.63 g/t Ag, 0.42 % Cu, 1.08 % Zn) (See News Release from January 6, 2025)
  - MD-18-08 intersected **6.85 g/t Au over 9.0 m** (See News Release from January 8, 2019)
  - MD-23-34 intersected **1.56 gpt AuEq over 5 m** (0.35 g/t Au, 6.10 g/t Ag, 0.64 % Cu, 0.67 % Zn) (See News Release from December 19, 2024)
  - MD-23-36 intersected **1.41 gpt AuEq over 3 m** (0.79 g/t Au, 13.3 g/t Ag, 0.58 % Cu, 0.01 % Zn) (See News Release from December 19, 2024)



**JUGGERNAUT**  
EXPLORATION LTD. TSX.V: JUGR

**KOKOMO PAD**  
MD-24-47  
**8.27 g/t AuEq**  
(6.21 g/t Au, 99.63 g/t Ag, 0.42 % Cu, and 1.08 % Zn)  
over 11.03 m



There is potential for economic recovery of Au, Ag, Cu, Pb, and Zn from these occurrences based on other mining and exploration projects with similar geochemistry in the area (Skeena Resources Eskay Creek style mineralization). Recoveries for Au are reported as 96% based on a 3-year running average for metal price, and included provisions for metallurgical recoveries, treatment charges, refining costs, and transportation. Recoveries for Ag, Cu, Pb, and Zn at the same recovery rate of 96%. The quoted reference of metallurgical recoveries is not from JuggerNaut's projects and there is no guarantee that such recoveries will ever be achieved, unless otherwise stated.



# BINGO PROPERTY 100 % CONTROLLED

- 1008 ha in world class geologic setting
- 700 m x 400 m area of strong sulphide mineralization
- **11.42 g/t AuEq over 5.11 m** (7.57 g/t Au, 20.23 g/t Ag, 2.72 % Cu, 0.01 % Pb, 0.1 % Zn) (See News Release from December 12, 2023)
- Strong **K-Spar alteration** in the northeast indicates proximity to potential porphyry feeder source



Pad 1  
Drill Hole: BI-23-01  
24.39 - 29.50 m  
11.42 gpt AuEq over 5.11 m,  
incl. 19.69 gpt AuEq over 2.90 m.

11.42 gpt AuEq OVER 5.11 m WITH ABUNDANT CHALCOPYRITE AND PYRRHOTITE



Pad ID	Hole ID		From (m)	To (m)	Interval (m)	Au (g/t)	Ag (g/t)	Cu (%)	Pb (%)	Zn (%)	AuEq (g/t)
Pad 1	BI-23-01	Interval	24.39	29.50	5.11	7.57	20.23	2.72	0.01	0.10	11.42
		Including	25.58	28.48	2.90	13.05	34.93	4.70	0.02	0.17	19.69



BI-24-31 - Pad 7 - **K-Spar alteration from 33.05 m to 184.50**



There is potential for economic recovery of Au, Ag, Cu, Pb, and Zn from these occurrences based on other mining and exploration projects with similar geochemistry in the area (Skeena Resources Eskay Creek, Goliath Resources Golddigger). Here, AuEq values were calculated using 3-year running averages for metal price, and included provisions for metallurgical recoveries, treatment charges, refining costs, and transportation. Recoveries for Au are reported as 92%, Ag 86%, Pb 94%, Zn 96%. It is assumed that Cu can be recovered with the Zn at the same recovery rate of 96%. The quoted reference of metallurgical recoveries is not from Juggernaut's projects and there is no guarantee that such recoveries will ever be achieved, unless detailed metallurgical work can be eventually completed.



TSX-V: JUGR  
FSE: 4JE  
OTCRF: JUGRF

For additional information on any of these properties please contact:

**Dan Stuart**

CEO and President, Director

[Dan@juggernautexploration.com](mailto:Dan@juggernautexploration.com)

**Juggernaut Exploration Ltd**

300 – 1055 West Hastings Street,  
Vancouver, BC V6E 2E9

Telephone: 604-559-8028

Fax: 604-684-6024





## ADDITIONAL INFORMATION

Rein Turna, P. Geo., is the qualified person as defined by National Instrument 43-101, for Juggernaut Exploration Ltd. projects, and supervised the preparation of, and has reviewed and approved, the technical information in this release. Further information regarding Juggernaut's Big One, Midas, and Bingo properties can be sourced online at [www.juggernautexploration.com](http://www.juggernautexploration.com) or by contacting Dan Stuart at 604-559-8028.

All rock, channel, and talus fine samples were crushed and pulverized at ALS Canada Ltd.'s lab in North Vancouver, Terrace, BC, or Reno, Nevada. ALS is either Certified to ISO 9001:2008 or Accredited to ISO 17025:2005 in all of its locations. The resulting sample pulps were analyzed for gold by fire assay in Reno, Nevada or in Vancouver, BC. The pulps were also assayed using multi-element aqua regia digestion at ALS Canada Ltd.'s lab in Vancouver, BC. The silt samples were sieved and assayed at ALS Canada Ltd.'s lab in Vancouver, BC. The coarse reject portions of the rock, channel and talus fine samples, as well as the pulps, were shipped to J2 Syndicate's storage facility in Terrace, BC. The silt samples were disposed of after analysis. All samples were analyzed using ALS Canada Ltd.'s assay procedure ME-ICP41, a 1:1:1 aqua regia digestion with inductively-coupled plasma atomic emission spectrometry (ICP-AES) or inductively-coupled plasma mass spectrometry (ICP-MS) finish for 35 elements as well as the Au-AA24 lead-collection fire assay fusion procedure with atomic absorption spectroscopy (AAS) finish. Any results greater than 100 ppm for silver or 10,000 ppm copper, lead and zinc were additionally assayed using ALS's OG46 method particular to each element. This method used an HNO<sub>3</sub>-HCl digestion followed by ICP-AES (or titrimetric and gravimetric analysis). Gold values of greater than 10 ppm Au were assayed by the Au-GRA22 method which includes a fire-assay fusion procedure with a gravimetric finish. Blanks and duplicates QA/QC samples were inserted into channels sample laboratory batches. Additionally, and 10% sub-sample of pulp and reject material was sent to Activation Laboratories in Ancaster Ontario, for check-analysis.

The reader is cautioned that grab samples are spot samples which are typically, but not exclusively, constrained to mineralization. Grab samples are selective in nature and collected to determine the presence or absence of mineralization and are not intended to be representative of the material sampled.