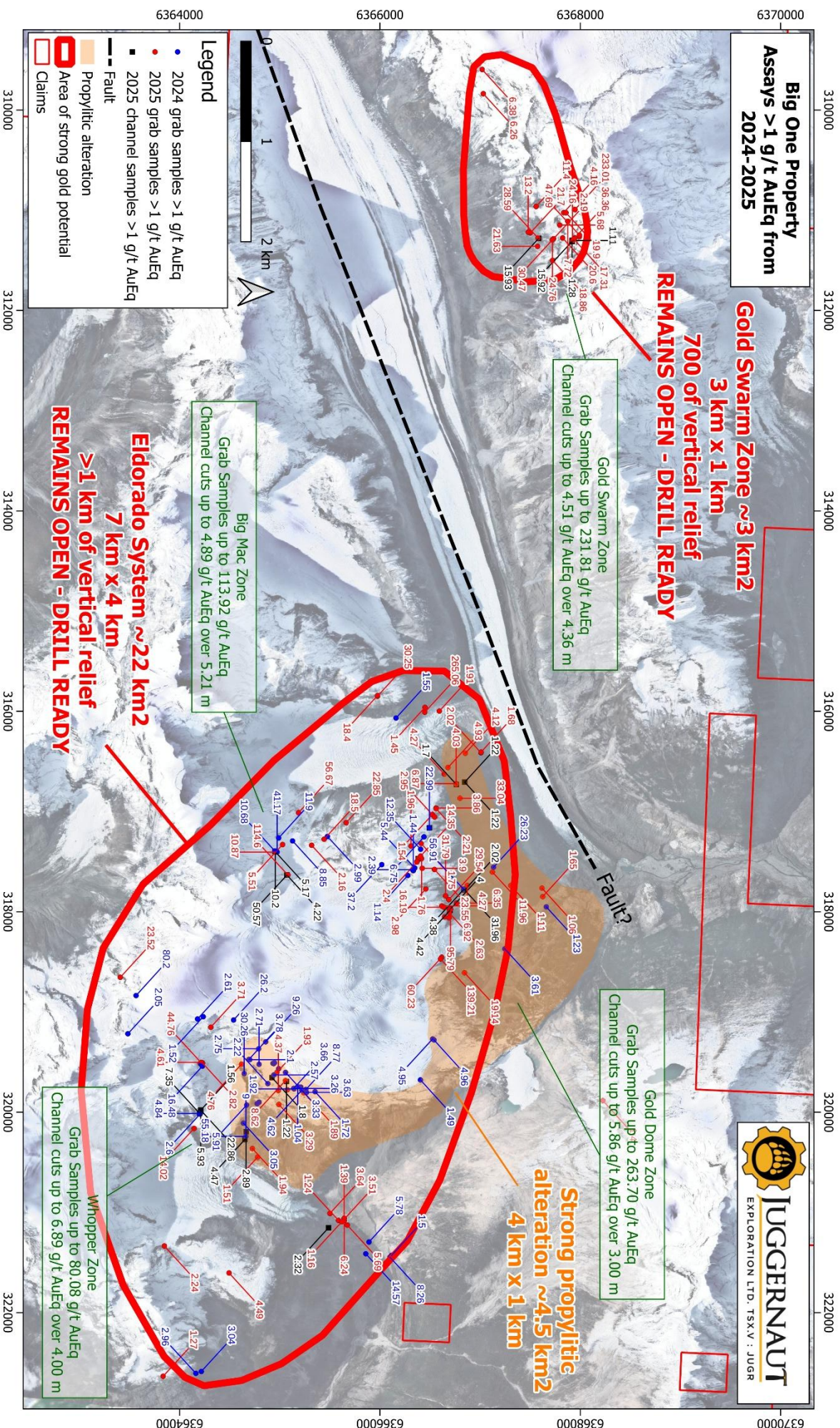




BIG ONE GOLD-RICH DISTRICT-SCALE SYSTEM

- The district-scale **Eldorado System** covers an area of **22 km²** that remains wide open where grab samples assayed **up to 263.70 g/t AuEq or 8.48 oz/t AuEq** (256.60 g/t Au, 546.00 g/t Ag, 0.43 % Cu, 0.41 % Pb and 0.01 % Zn) from **>400 mineralized veins** that remain open and are **up to 10 m wide**, hosted in **shear zones up to 50 m wide**, and are **exposed on surface for >500 m with >1 km of vertical relief**.
- The **Gold Swarm Discovery** is a **3 km²** area of strong gold potential with **>100 gold-rich polymetallic veins exposed on surface for >200 m and up to 4.5 m wide with up to 700 m of vertical relief**, where grab samples assayed **up to 231.81 g/t AuEq or 7.45 oz/t AuEq** (226.94 g/t Au, 335.00 g/t Ag, 0.00 % Cu, 4.99 % Pb and 0.01 % Zn) that remains open.
- **41% (219 out of 527) of samples** collected within the Eldorado System in 2024 and 2025 assayed **>1 g/t AuEq**; **65% (28 out of 43) samples** collected within the Gold Swarm Zone in 2024 and 2025 assayed **>1 g/t AuEq**.
- **Gold samples up to 256.60 g/t or 8.25 oz/t, silver samples up 2810 g/t or 90.34 oz/t, and copper samples up to 14.40 %** were collected on Big One.
- The polymetallic veins, alteration signature, geochemical path finder element signature, and geophysical anomalies strongly indicate the **presence of a large common buried gold, silver, copper rich porphyry feeder source** or similar magmatic source or sources at depth responsible for the extensive district scale high-grade gold, silver, copper veining confirmed on surface.
- Detailed mapping has confirmed that **mineralization at Eldorado and Gold Swarm is linked to a Jurassic to Cretaceous transpressional system and intrusive sources**, coeval with the magmatic events that formed the nearby multi-million-ounce **Galore Creek copper, gold, silver porphyry deposit**.
- The district scale system shows **widespread porphyry-style propylitic alteration**, with the final phase of alteration occurring simultaneously with mineralization, which will help vector towards the potential source of the mineralization seen in the gold-rich shear zones and veins on surface that remain open.
- **Mineralized veins and shear zones were emplaced through brittle-ductile deformation during and after the Jurassic period**, forming a **major structural corridor** at Big One defined by northeast, east, and northwest trends, confirming common orientations as well as similar geochemical signatures and textures of the gold-mineralized veins along the 15 km Highway of Gold corridor surrounding the snowcap of Decker Glacier strongly indicating that **the gold-rich mineralization found throughout is all part of one district-scale gold system** that remains open.
- The recently received **5-year drill permit** valid until March 31, 2031, will allow the Company to define the extent of the mineralization at depth as well as fully understand the geometry of the system and related drivers of the mineralization starting with the **fully funded inaugural ~10,000 m drill program** in preparation for a future resource.
- The Big One property has an area of 40,861 ha and is **100% controlled** by Juggernaut Exploration Ltd. The company has **\$10M in cash and is fully-funded for the inaugural ~10,000 m drill program** and has **no debt** with only **32M shares issued and outstanding**.
- The Big One property exploration qualifies for **the Critical Mineral Exploration Tax Credit (CMETC)**.

BIG ONE GOLD-RICH DISTRICT-SCALE SYSTEM



For additional information contact:
Dan Stuart, CEO
dan@juggernauteexploration.com

TSX-V: JUGR
FSE: 4JF
OTCPK: JUGRF