



TSX-V: JUGR
FSE: 4JE
OTCQB: JUGRF



**ON TRACK WITH
DISCOVERY**



FORWARD LOOKING STATEMENT

This presentation may contain forward-looking statements, including management's assessments of future plans & operations, expectations of future production, cash flow, earnings, property options, TSX approval and closing of a financing. These statements are based on current expectations that involve a number of risks & uncertainties, which could cause actual results to differ materially from those anticipated.

Forward-looking statements may be identified by the use of words such as “believes”, “anticipates”, “expects”, “estimates”, “may”, “could”, “would”, “will”, or “plan”. Since forward looking statements are based on assumptions and address future events and conditions and property options by their very nature they involve inherent risks and uncertainties.

Actual results relating to, among other things, results of exploration, reclamation, capital costs, and the company's financial condition and prospects, could differ materially from those currently anticipated in such statements for many reasons such as but not limited to; changes in general economic conditions and conditions in the financial markets; changes in demand and prices for the minerals the Company expects to produce; litigation, legislative, environmental and other judicial, regulatory, political and competitive developments; technological and operational difficulties encountered in connection with the Company's activities; and changing foreign exchange rates and other matters discussed in this presentation.

Persons should not place undue reliance on the Company's forward-looking statements. Further information regarding these and other factors, which may cause results to differ materially from those projected in forward-looking statements, are included in the filings by the Company with securities regulatory authorities. The Company does not assume any obligation to update or revise any forward looking statement that may be made from time to time by the Company or on its behalf, except in accordance with applicable securities laws, whether as a result of new information, future events or otherwise.

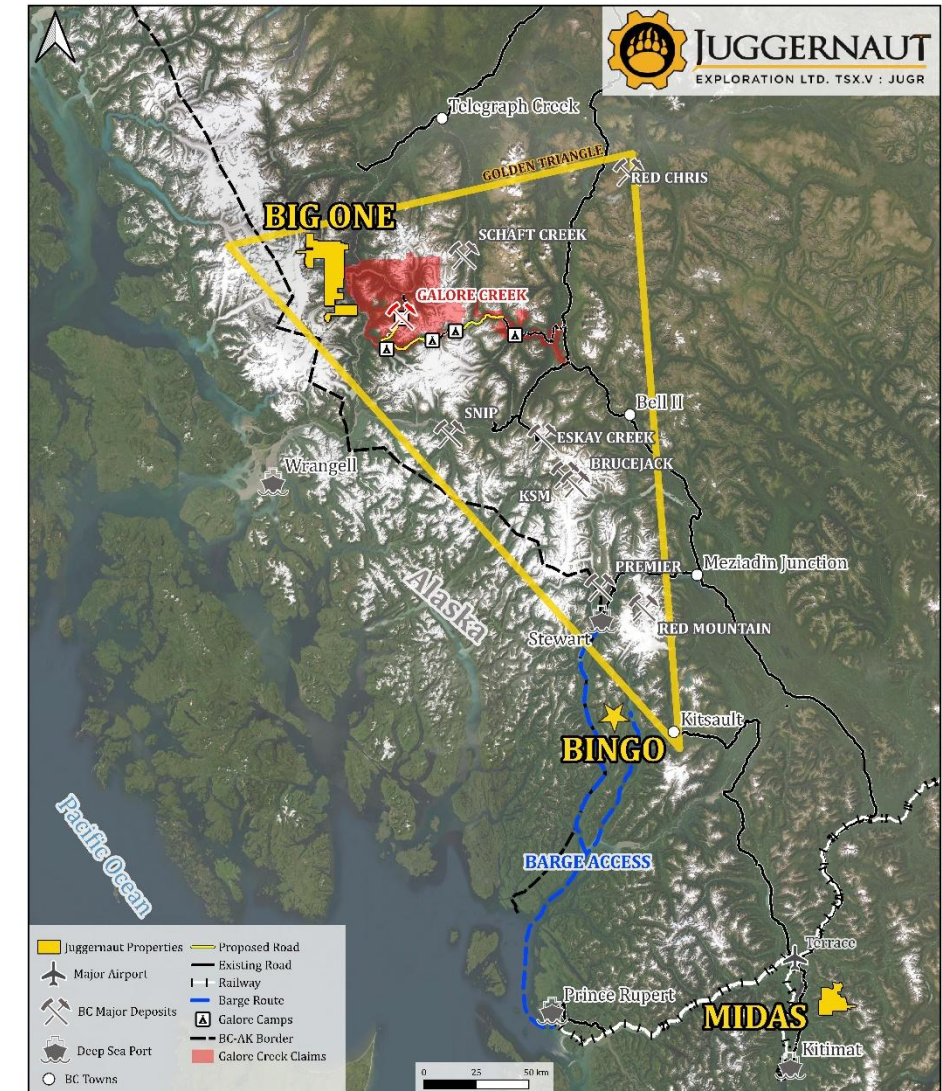
The TSX Exchange has not reviewed and does not accept responsibility for the adequacy or accuracy of the contents of this presentation, that has been prepared by management.

This presentation does not constitute an offer to sell or a solicitation of an offer to buy any securities of the Company in any jurisdiction. Any such offer or solicitation will be made only in accordance with all applicable laws. The common shares of the Company will not be and have not been registered under the United States Securities Act of 1933, as amended, and may not be offered or sold in the United States, or to a U.S. person, absent registration or applicable exemption therefrom.



CORPORATE OVERVIEW

- Juggernaut Exploration Ltd – **A New Ground Floor Opportunity**
- Focused on Northwestern British Columbia
- **Seasoned Team:** 30 Years of a Proven Track Record of Discovery Culminating in ~1 Billion Dollars of Value
- **Big One (Gold Rich District Scale System located in the Golden Triangle)** – 100 % controlled
- **Midas Property (Eskay-style VMS system)** – 100 % owned
- **Bingo (High Grade Shear Hosted System)** – 100 % owned
- **Rapid Glacial and Snowpack Abatement** resulting in discoveries





MANAGEMENT AND DIRECTORS

Dan Stuart, President & CEO, Director

- >30 years of capital market experience
- >500 million dollars raised in the natural resource sector
- Founding member and capitalizer of several private mineral syndicates J2, DSM, YCS, B2, and B-All
- Institutional clients in both the Americas and Europe

William Jung, Director & CFO

- 35 years of experience in finance and business
- Former chartered accountant involved in management of companies on the TSX
- >25 years experience in the management of companies publicly listed on the TSX

Jim McCrea, Director

- 25 years experience in exploration and mining
- 20 years in mineral resource estimation including Cumberland Resources
- Ore body modelling and resource estimation for the successfully targeted take over company Cumberland Resources Ltd. By Agnico- Eagle Mines Ltd.

Chris Verrico, Director

- >20 years of managing mineral exploration projects in BC, Yukon, Alaska, Nunivut
- Experience as a contractor with extensive northern rural-remote infrastructure construction and contract mining projects

Peter Bryant, Director

- 45 years of experience in international finance and investment banking
- Former director of investment banking with Standard Chartered Group
- Worked for Hill Samuel Group and Guinness Mahon Holding's, two of the prestigious merchant banking house in London, England

Dr. Quinton Hennigh

Technical Advisor

- World renowned exploration geologist with >30 years of experience with major miners Homestake, Newcrest and Newmont. CHM & President of Novo TSX.V: NVO

Bill Chornobay

Program Manager

- >30 years proven track record; discoveries resulting in ~1 billion dollars in value.

Manuele Lazzarotto, PhD

Senior Consulting Geologist

- 8 years experience in the mineral exploration industry taking projects from inception to defined deposits
- Extensive experience in volcanogenic massive sulphide deposits and gold systems.
- Senior member of the team on the Surebet Discovery from inception (Goliath Resources Ltd)



BIG ONE NEW GOLD RICH DISTRICT SCALE SYSTEM

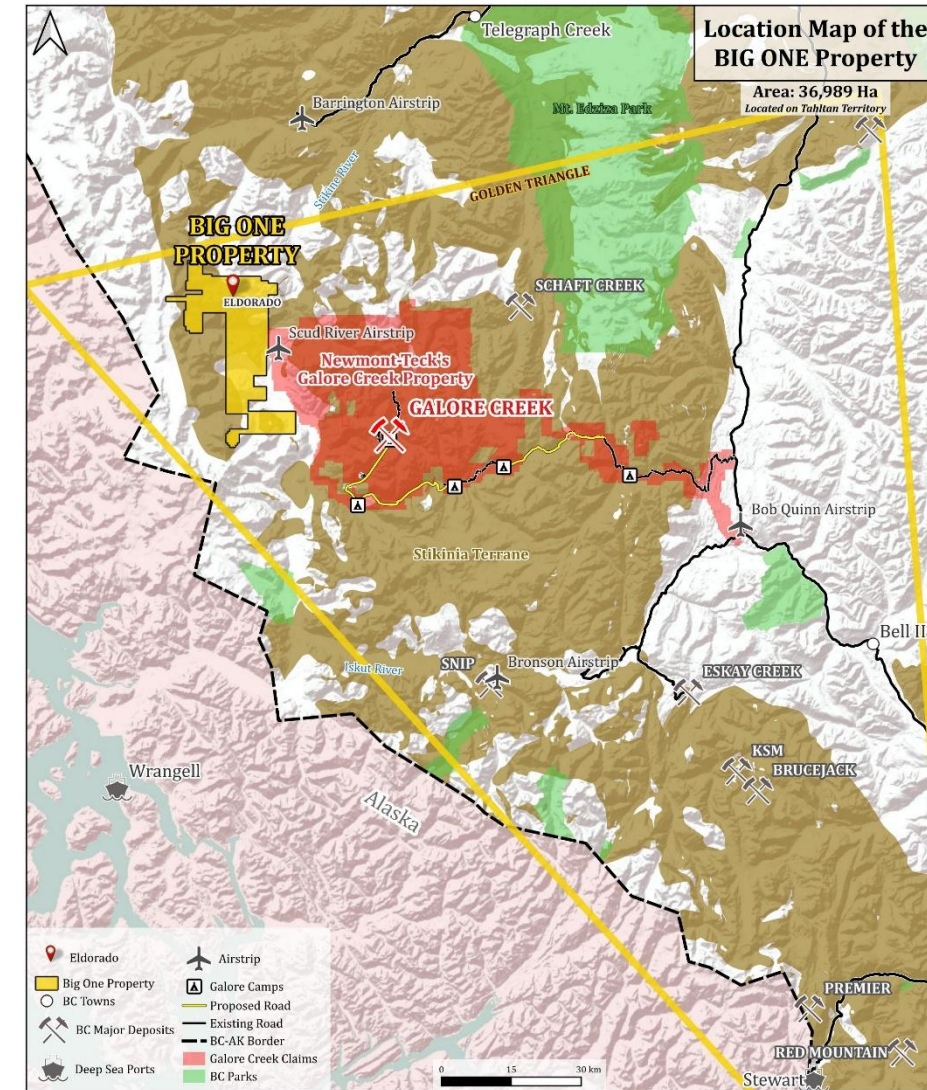
Located in the prolific Golden Triangle

[Property Video](#)



BIG ONE PROPERTY – 100 % CONTROLLED

- 36,989 ha of world-class geologic terrane in the heart of the Golden Triangle
- 95 % of the property is unexplored
- Ongoing rapid glacial and snowpack abatement
- Strong potential for discovery today and into the future
- Situated in an area **well known for hosting world class precious metal and porphyry deposits** (Galore Creek, KSM, Shaft Creek, Brucejack,...)
- Area favorable to host mineralized deposits:
 - Extensive propylitic alteration
 - Untested geophysical anomalies
 - Strong silt, soil and rock geochemistry including path finder elements directly related to porphyry systems
 - Key structures and textures
 - Porphyry-style mineralization
 - High-grade polymetallic veins
- The project qualifies for the Critical Mineral Exploration Tax Credit (CMETC)

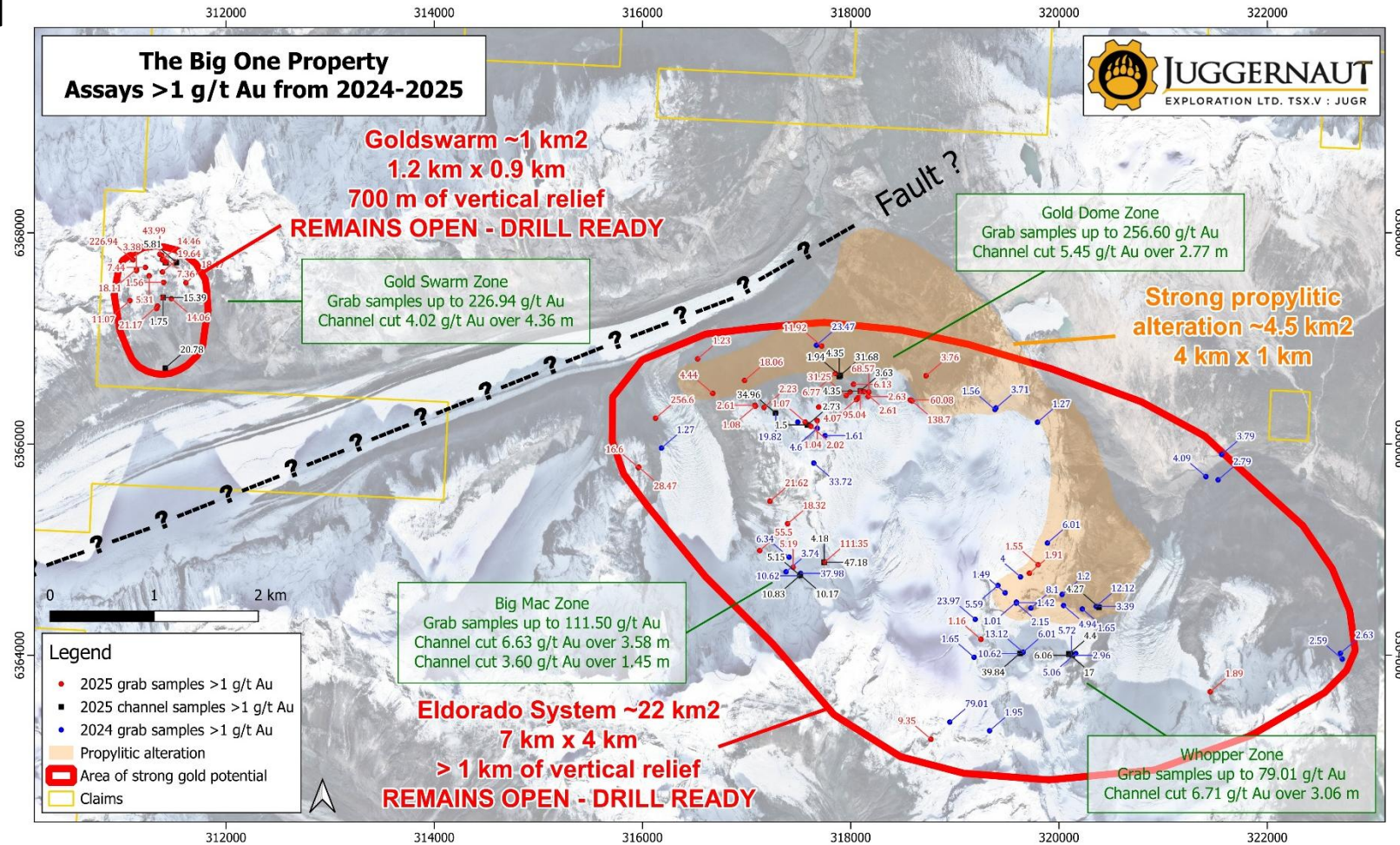


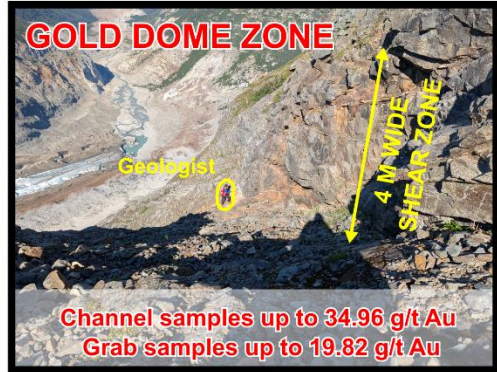
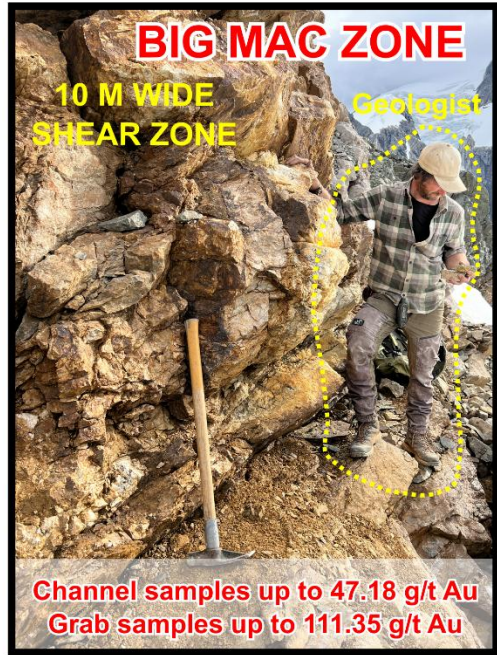


NEWLY DISCOVERED DRILL READY ELDORADO SYSTEM

(see news release from January 20, 2025 and September 8, 2025)

- ~22 km² Gold-silver-copper Eldorado System 7 km x 4 km remains open exposed in outcrop on the fringes of the snowfields/glaciers at Geology Ridge and Decker Creek Glacier.
- ~1 km² Gold Swarm Zone remains open potentially offset by a major fault
- Grab samples up to 256.60 g/t Au (8.25 oz/t Au) and 3157 g/t Ag (101.50 oz/t Ag) (see news release from January 20, 2025, and September 8, 2025)
- >500 quartz-sulphide veins and shears up to 50 m wide and >1 km of strike and vertical relief containing semi-massive to massive chalcopyrite, sphalerite and galena
- Extensive area of propylitic alteration covering an area of 4.5 km² (4 km by 1 km)
- Presence of a large mineralizing system or systems at depth indicated to be the origin of the extensive high-grade gold, silver and copper mineralization confirmed on surface

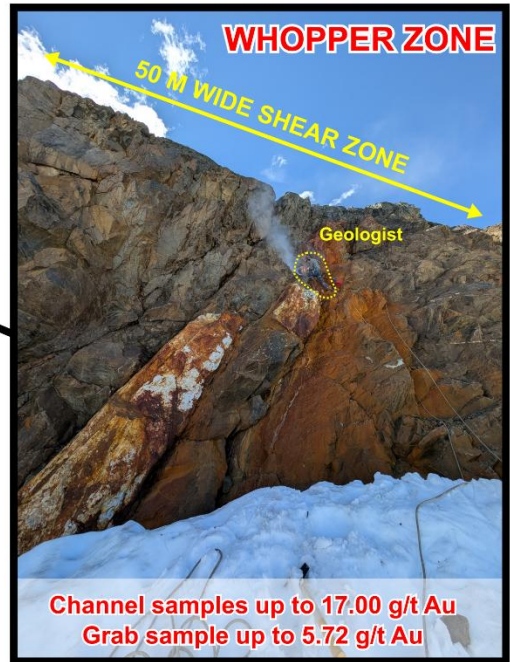
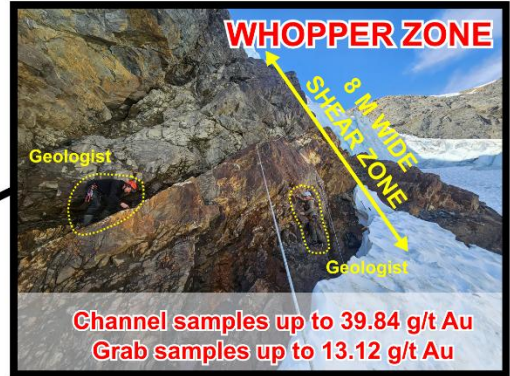
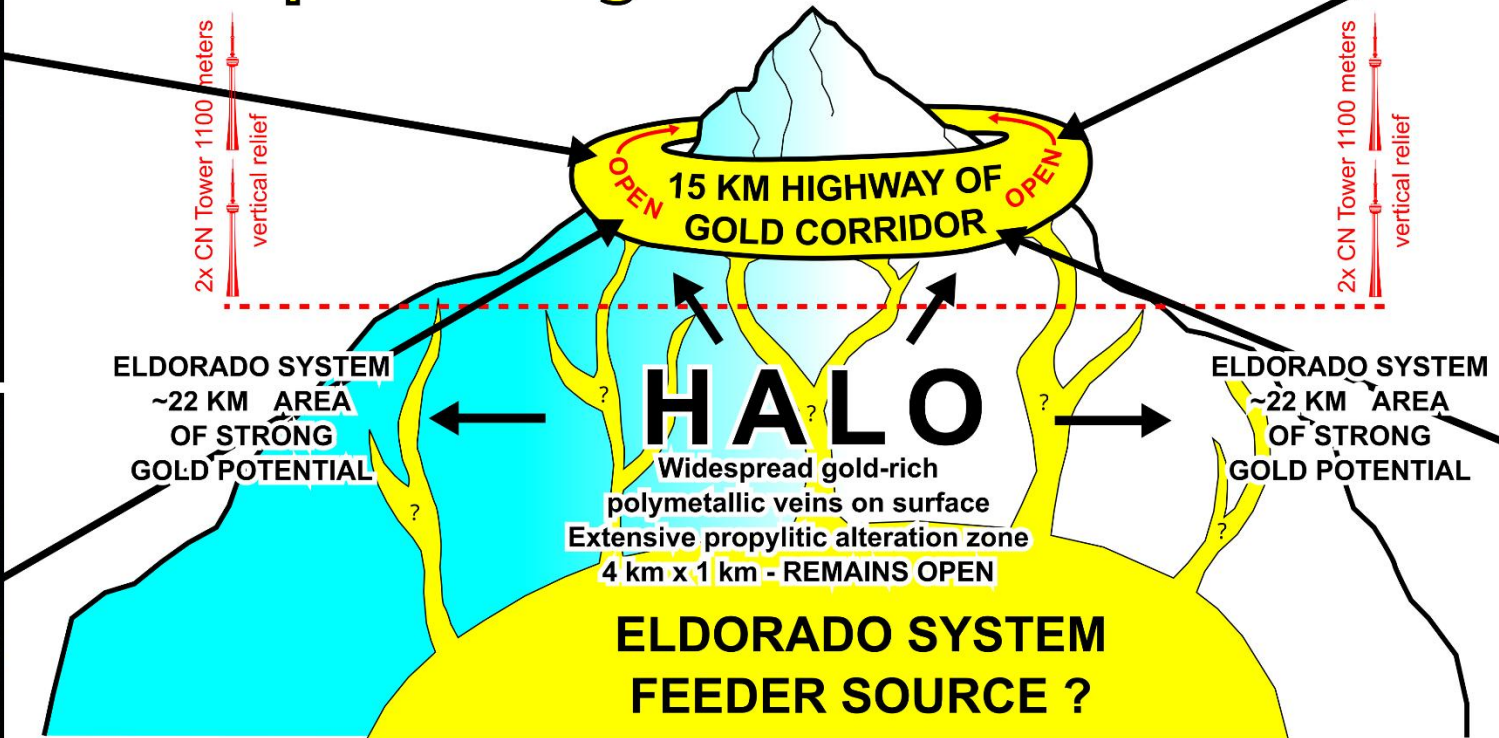




BIG ONE GOLD DISCOVERY

TIP OF THE ICEBERG >500 Gold Rich Veins

Up to 256.6 g/t Au DRILL READY





Eldorado System - Big Mac Zone – Drill Ready

- Measures ~1 km by ~1 km
- Consists of multiple large veins with shear zones that are up to 10 meters wide and exposed on surface for >400 meters with vertical reliefs of up to 360 m where they are covered by snow and ice and remain wide open.
- A channel cut from the Big Mac Zone that assayed **6.63 g/t Au over 3.58 meters, including 17.45 g/t Au over 1.35 m and 47.18 g/t Au or 1.52 oz/t Au over 0.47 m, true width**, was collected 5 meters to the east of a grab sample that assayed **up to 111.35 g/t Au**.
- A second channel cut assayed **3.60 g/t Au over 1.45 meters, including 10.17 g/t Au over 0.50 meters** located 270 m west of the 111.35 g/t Au sample.
- A grab sample, located 450 m to the west, assayed **55.5 g/t Au or 1.78 oz/t Au** from a difficult to access secondary vein located in the nearby cliffs.
- 14 out of 26 samples (54%) from the Big Mac Zone assayed > 1 g/t Au. The Big Mac Zone is drill-ready

[Big Mac Video](#)

Zone	Year	Sample ID	Type	Au (g/t)
Big Mac	2025	M220659	Grab	111.35
Big Mac	2025	M220561	Grab	55.50
Big Mac	2025	M217807	Channel	47.18
Big Mac	2024	D751216	Grab	37.98
Big Mac	2025	D750624	Grab	21.62
Big Mac	2025	D750625	Grab	18.32
Big Mac	2025	M217784	Channel	10.83
Big Mac	2024	D750608	Grab	10.62
Big Mac	2025	M217785	Channel	10.17
Big Mac	2024	D751284	Float	6.34
Big Mac	2025	D751435	Grab	5.19
Big Mac	2025	M217788	Channel	5.15
Big Mac	2025	M217805	Channel	4.18
Big Mac	2024	D751285	Grab	3.74



Eldorado System - Gold Dome Zone – Drill Ready

- Measures ~3 km by ~1.5 km
- Consists of clusters of multiple extensive gold-rich shear zones, veins, and stockwork that are up to 4 meters wide and exposed on surface for >1 km with a vertical relief of ~600 m and remain open.
- Grab samples assayed **up to 256.60 g/t Au or 8.25 oz/t Au** and a channel cut assayed **5.45 g/t Au over 2.77 meters** from a vein exposed on surface in the adjacent difficult to reach cliff face for ~200 meters.
- The mineralized veins contain seams of semi-massive galena, sphalerite, chalcopyrite and pyrite.
- 46 samples out of 191 (24%) assayed > 1 g/t Au. Multiple targets in the Gold Dome Zone are drill ready.

[Gold Dome Video](#)

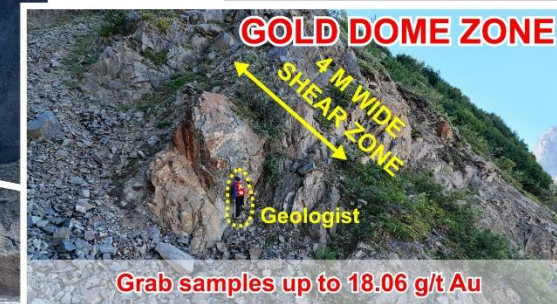
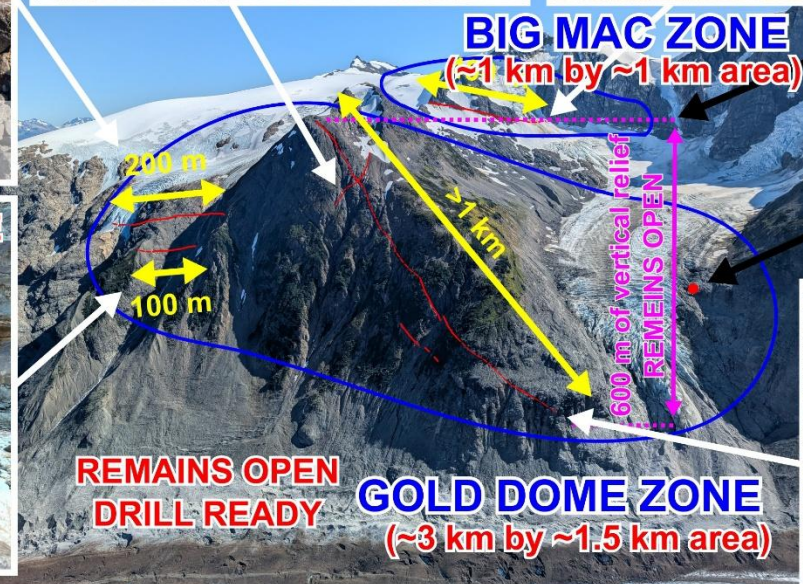
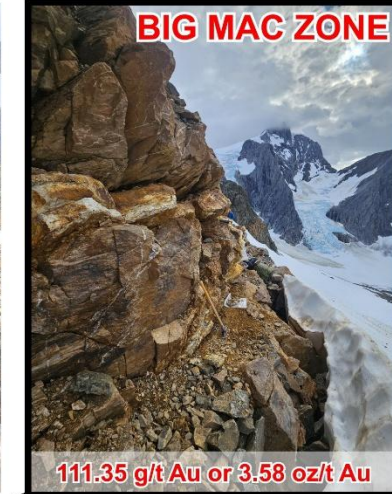
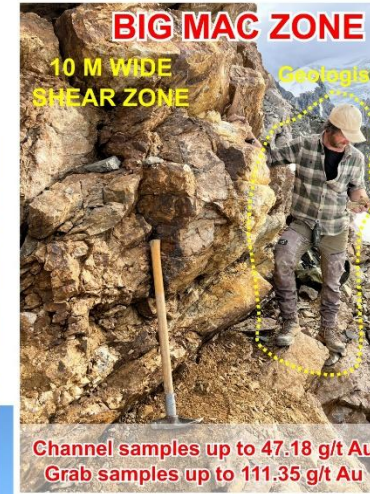
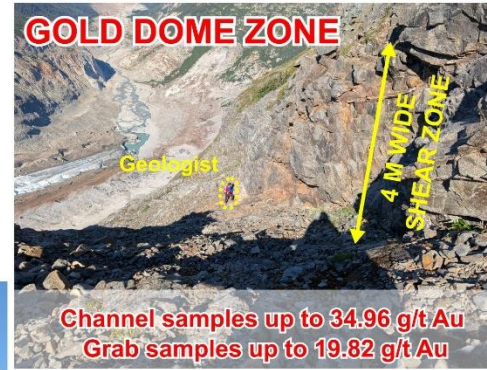
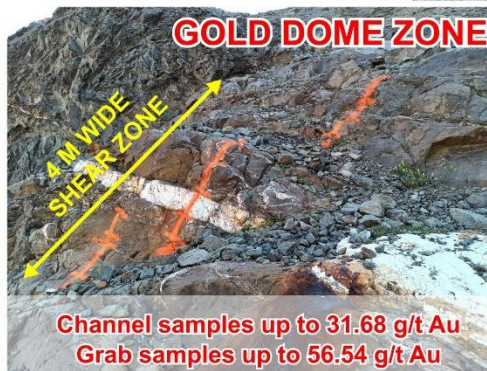
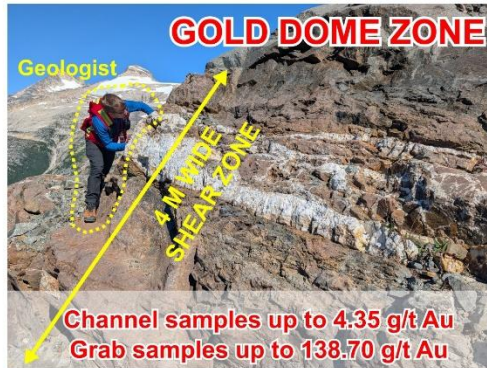
Zone	Year	Sample ID	Type	Au (g/t)
Gold Dome		2025 M224886	Float	256.60
Gold Dome		2025 D751423	Grab	138.70
Gold Dome		2025 M224956	Grab	95.04
Gold Dome		2025 D751407	Grab	68.57
Gold Dome		2025 D751424	Grab	60.08
Gold Dome		2024 D751966	Grab	56.54
Gold Dome		2025 M217579	Channel	34.96
Gold Dome		2024 D751156	Grab	33.72
Gold Dome		2025 M217613	Channel	31.68
Gold Dome		2025 M224961	Grab	31.25
Gold Dome		2025 D751402	Grab	29.23
Gold Dome		2025 D751375	Grab	28.47
Gold Dome		2024 D751964	Talus	23.47
Gold Dome		2024 D751209	Grab	19.82
Gold Dome		2025 D751357	Grab	18.06
Gold Dome		2025 D751374	Talus	16.60
Gold Dome		2025 M224959	Grab	15.94
Gold Dome		2025 M220602	Grab	11.92
Gold Dome		2025 M224957	Grab	9.65
Gold Dome		2025 M224905	Talus	9.48
Gold Dome		2025 M220601	Grab	6.77
Gold Dome		2025 D751403	Float	6.13
Gold Dome		2024 D751158	Grab	4.60
Gold Dome		2025 D750632	Float	4.44
Gold Dome		2025 M217608	Channel	4.35
Gold Dome		2025 M217643	Channel	4.35
Gold Dome		2025 D751406	Grab	4.07
Gold Dome		2025 D750621	Grab	3.76
Gold Dome		2025 M217637	Channel	3.63
Gold Dome		2024 D750192	Grab	3.44
Gold Dome		2025 M217727	Channel	2.73
Gold Dome		2025 M224963	Grab	2.63
Gold Dome		2025 D751404	Grab	2.61
Gold Dome		2025 M224851	Chip	2.61
Gold Dome		2025 M224855	Grab	2.23
Gold Dome		2025 M224902	Subcrop	2.02
Gold Dome		2025 M217618	Channel	1.94
Gold Dome		2024 D751195	Channel	1.61
Gold Dome		2025 M217724	Channel	1.50
Gold Dome		2025 M224901	Grab	1.46
Gold Dome		2025 M217636	Channel	1.33
Gold Dome		2024 D751251	Grab	1.27
Gold Dome		2025 D750629	Grab	1.23
Gold Dome		2025 M224852	Grab	1.08
Gold Dome		2025 D750852	Subcrop	1.07
Gold Dome		2025 M224904	Grab	1.04



(For details, see news release from January 20, 2025, and September 8, 2025)

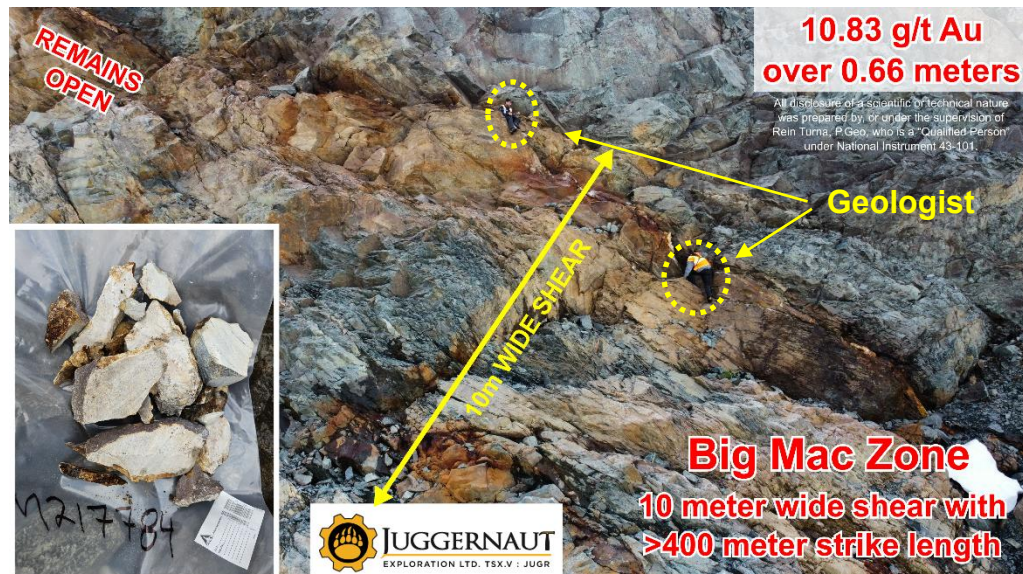
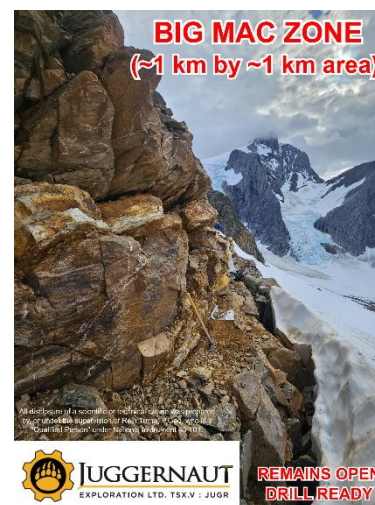
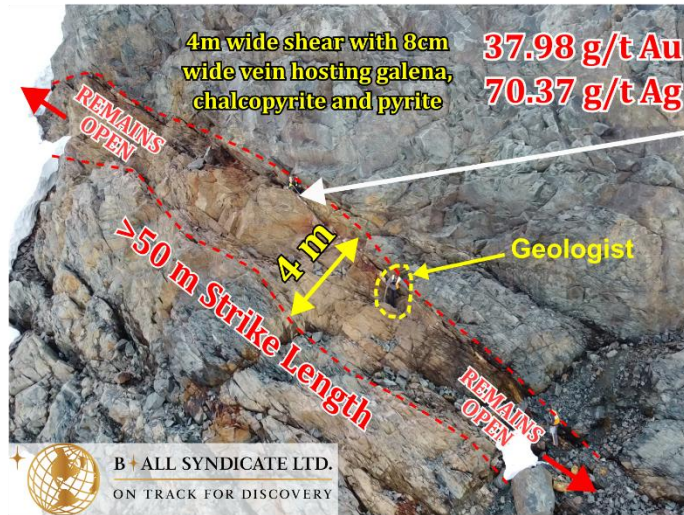


All disclosure of a scientific or technical nature was prepared by, or under the supervision of Rein Turna, P.Geo, who is a "Qualified Person" under National Instrument 43-101.





(For details, see news release from January 20, 2025, and September 8, 2025)





(For details, see news release from January 20, 2025, and September 8, 2025)

Eldorado System - Whopper Zone – Drill Ready

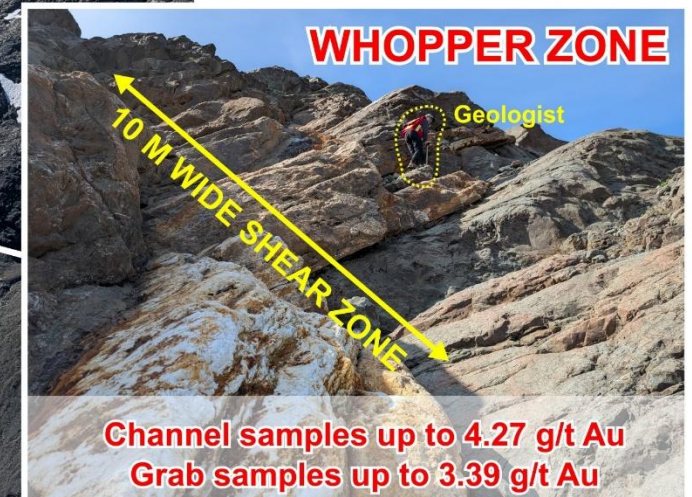
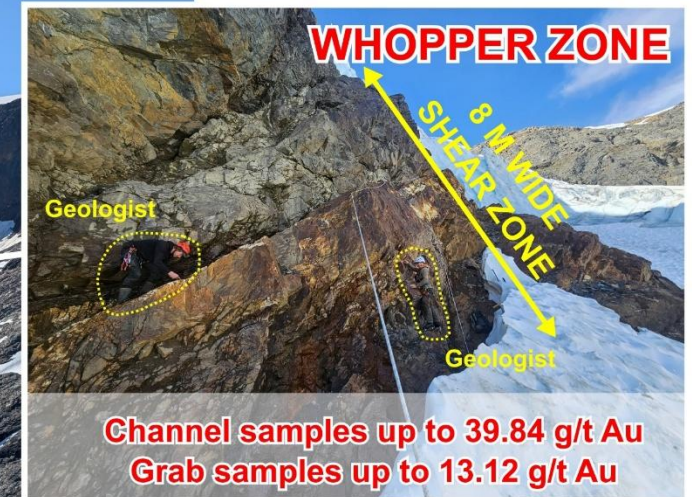
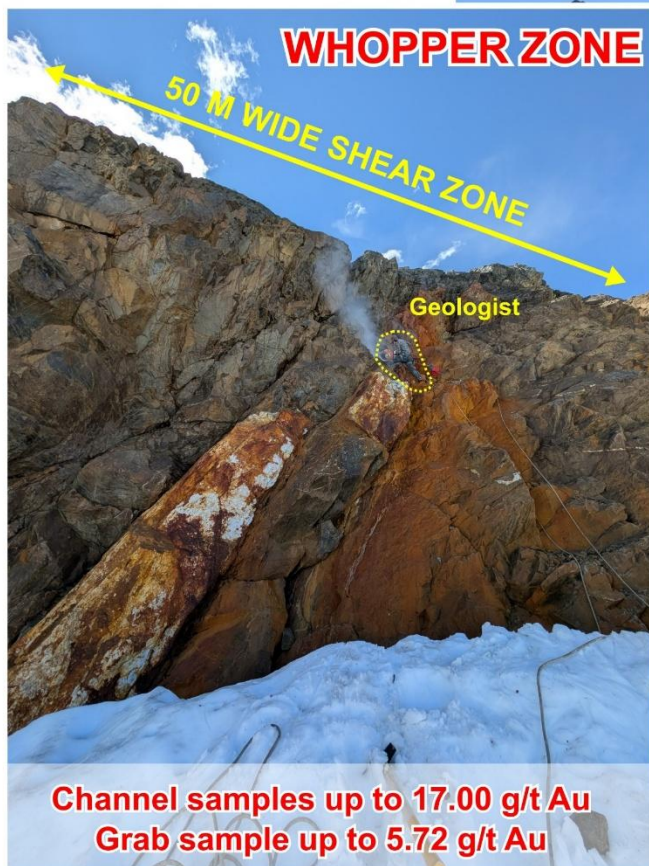
- Measures ~2 km by ~2 km
- Consists of multiple veins up to 5 meters wide and extensive shear zones up to 50 meters wide that are exposed on surface for >500 meters with vertical reliefs of up to 780 meters.
- Channel cuts from the Whopper Zone **assayed up to 39.84 g/t Au or 1.28 oz/t Au over 0.50 m within a larger interval that assayed 6.71 g/t Au over 3.06 meters.**
- Multiple grab collected upslope of the channel cut along a 5 meter wide vein hosted in an 8 meter wide shear zone along 50 meters of exposed vein assayed **up to 13.12 g/t Au.**
- The shear zones are difficult to sample due to the exposed cliffs and comprise numerous lenses of semi-massive to massive galena, chalcopyrite, sphalerite and pyrite contained in quartz veins and stockwork and remain open on either side, where they are covered by snow and ice.
- 32 samples out of 158 (20%) assayed > 1 g/t Au. Multiple targets in the Whopper zone are drill-ready

[Whopper Video](#)

Zone	Year	Sample ID	Type	Au (g/t)
Whopper	2024	D751282	Grab	79.01
Whopper	2025	M217601	Channel	39.84
Whopper	2024	D751163	Float	23.97
Whopper	2025	M217567	Channel	17.00
Whopper	2024	D750394	Grab	13.12
Whopper	2024	D751191	Channel	12.12
Whopper	2024	D751975	Grab	10.62
Whopper	2025	D751365	Grab	9.35
Whopper	2024	D750389	Grab	8.10
Whopper	2025	M217571	Channel	6.06
Whopper	2024	D750395	Grab	6.01
Whopper	2024	D750198	Float	6.01
Whopper	2024	D751154	Grab	5.72
Whopper	2024	D751969	Float	5.59
Whopper	2024	D751939	Channel	5.06
Whopper	2024	D751112	Float	4.94
Whopper	2025	M217566	Channel	4.40
Whopper	2025	M217573	Channel	4.27
Whopper	2024	D751943	Grab	4.00
Whopper	2024	D751192	Channel	3.39
Whopper	2024	D751215	Grab	2.96
Whopper	2024	D751699	Grab	2.15
Whopper	2024	D751165	Grab	1.95
Whopper	2025	D751426	Grab	1.91
Whopper	2024	D751213	Float	1.65
Whopper	2024	D751109	Grab	1.65
Whopper	2025	M220559	Grab	1.55
Whopper	2024	D751968	Grab	1.49
Whopper	2024	D751972	Channel	1.42
Whopper	2024	D751993	Grab	1.20
Whopper	2025	D750751	Grab	1.16
Whopper	2024	D750393	Grab	1.01



(For details, see news release from January 20, 2025, and September 8, 2025)



All disclosure of a scientific or technical nature was prepared by, or under the supervision of Rein Turna, P.Geo, who is a "Qualified Person" under National Instrument 43-101.



(For details, see news release from January 20, 2025, and September 8, 2025)





(For details, see news release from January 20, 2025, and September 8, 2025)

Gold Swarm Zone – Drill Ready

- The zone has been recently exposed by glacial retreat and covers an area of ~1 km by ~1 km and extends over a vertical relief of 440 m and remains open in all directions.
- Contains clusters of shear zones and veins up to 4.5 meters wide with grab samples that assayed **up to 226.94 g/t Au or 7.30 oz/t Au**
- Channel cut that assayed **4.02 g/t Au over 4.36 m** containing substantial amounts of semi-massive to massive chalcopyrite, galena and sphalerite.
- 27 samples out of 44 (61%) assayed > 1 g/t Au. The Gold Swarm Zone is drill-ready.

[Gold Swarm Video](#)

Zone	Year	Sample ID	Type	Au (g/t)
Gold Swarm	2025	M217656	Float	226.94
Gold Swarm	2025	D750642	Grab	43.99
Gold Swarm	2025	D751373	Grab	21.44
Gold Swarm	2025	M224982	Chip	21.17
Gold Swarm	2025	M217705	Channel	20.78
Gold Swarm	2025	M217655	Grab	19.64
Gold Swarm	2025	D750644	Grab	18.47
Gold Swarm	2025	D750639	Grab	18.12
Gold Swarm	2025	M217657	Grab	18.11
Gold Swarm	2025	D750641	Grab	15.52
Gold Swarm	2025	M217852	Channel	15.39
Gold Swarm	2025	M217649	Channel	14.96
Gold Swarm	2025	D750638	Grab	14.46
Gold Swarm	2025	M224983	Grab	14.06
Gold Swarm	2025	M224883	Grab	11.07
Gold Swarm	2025	D751372	Grab	7.44
Gold Swarm	2025	D750643	Grab	7.36
Gold Swarm	2025	M217589	Channel	5.81
Gold Swarm	2025	M224981	Grab	5.31
Gold Swarm	2025	M217648	Channel	4.69
Gold Swarm	2025	M217702	Channel	4.30
Gold Swarm	2025	D751417	Grab	3.38
Gold Swarm	2025	D750704	Grab	2.59
Gold Swarm	2025	M217853	Channel	1.75
Gold Swarm	2025	M217592	Channel	1.69
Gold Swarm	2025	D751371	Grab	1.56
Gold Swarm	2025	M217591	Channel	1.17
Gold Swarm	2025	M217704	Channel	1.07



(For details, see news release from January 20, 2025, and September 8, 2025)



226.94 g/t Au or 7.30 oz/t Au



18.12 g/t Au

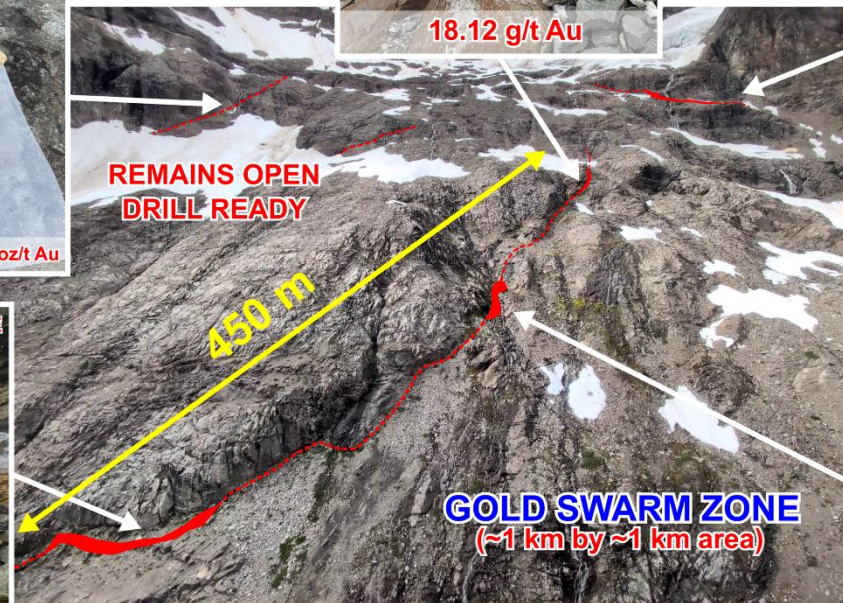


43.99 g/t Au or 1.41 oz/t Au

All disclosure of a scientific or technical nature was prepared by, or under the supervision of Rein Turna, P.Geo, who is a "Qualified Person" under National Instrument 43-101.



21.44 g/t Au



GOLD SWARM ZONE
(~1 km by ~1 km area)

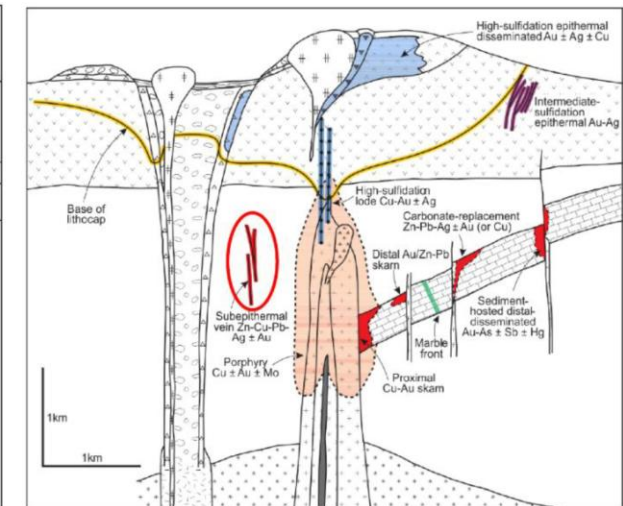
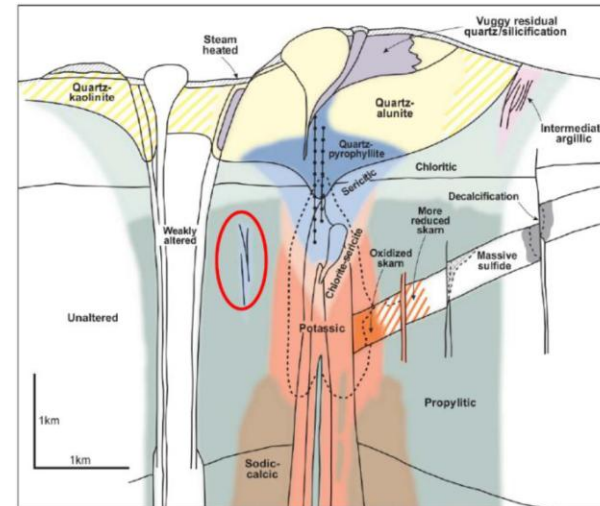


19.64 g/t Au



PORPHYRY SYSTEM ALTERATION AND MINERALIZATION ?

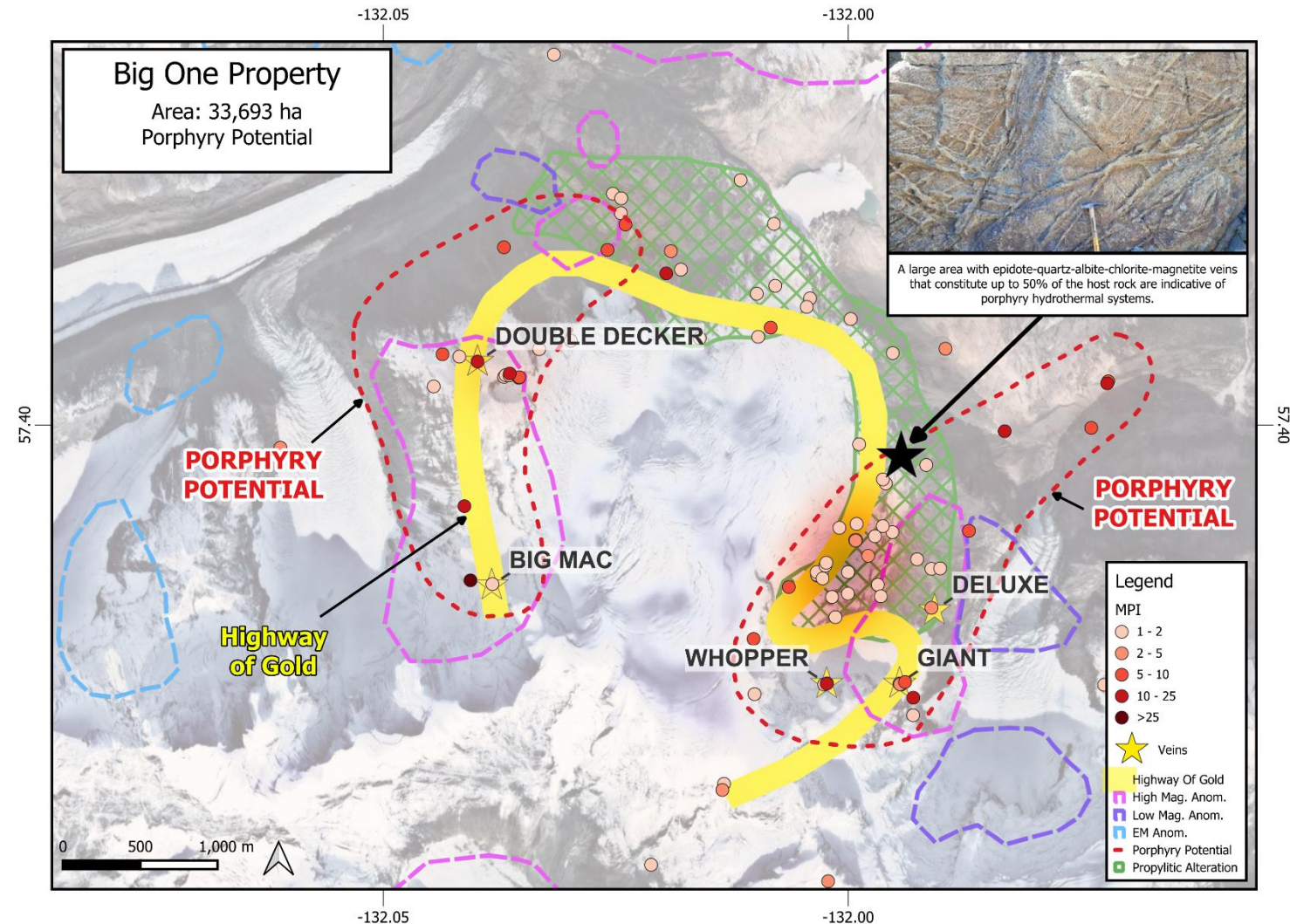
- Large area with within the diorite found to host **epidote-quartz-albite-chlorite-magnetite veins** that in places constitute up to 50% of the host rock, **indicative of porphyry-type magmatic hydrothermal systems**
- The vein assemblages are **typical of propylitic alteration found distal to high-grade potassic cores** of porphyry systems
- **Abundant base metal rich quartz veins** found around the Big One property may be **distal expression of porphyry mineralization**
- Significant **alteration and veining indicative of porphyry-style mineralization** observed at the Big One property





PORPHYRY FINGERPRINT ?

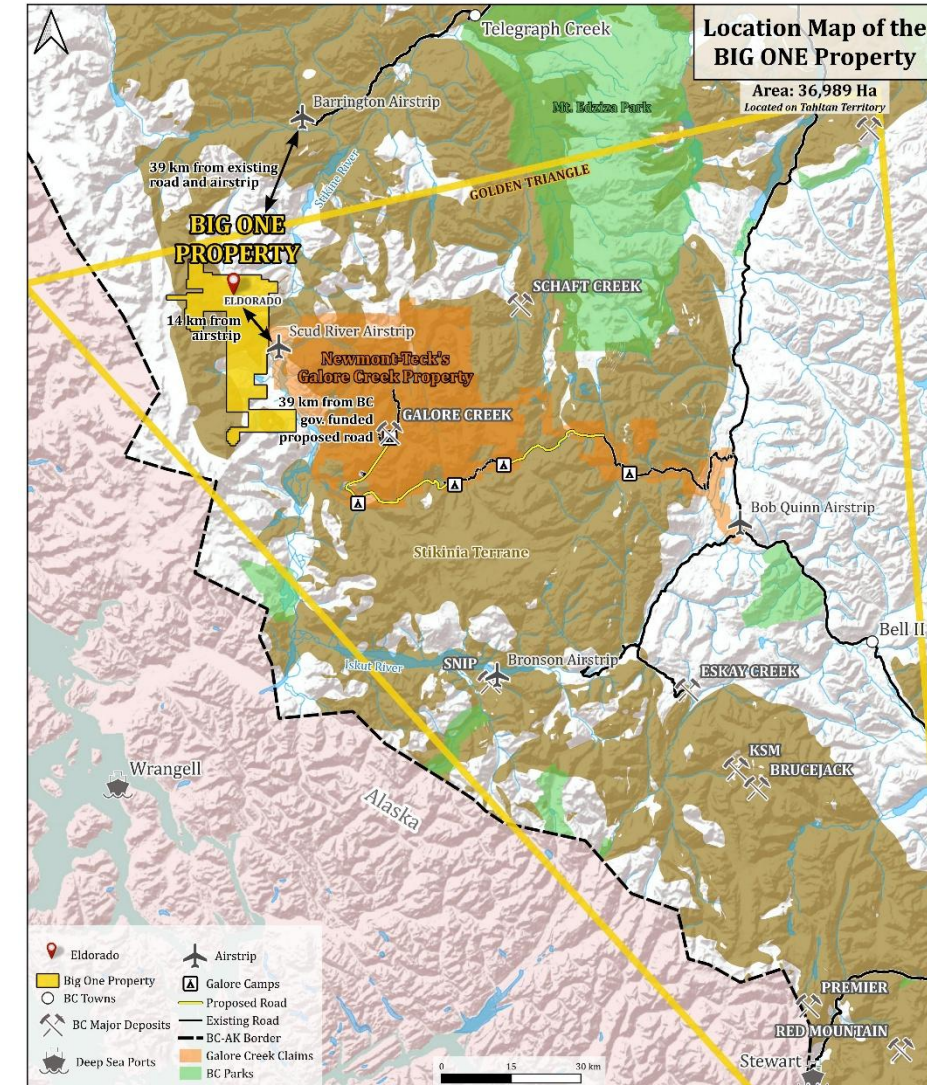
- **Two areas with porphyry potential** have been identified
- **Distribution of geochemical path finder elements overlaps with strong geophysical anomalies as well as multiple gold-rich polymetallic veins**
- Elevated concentrations of **antimony (Sb), tungsten (W), tellurium (Te), molybdenum (Mo) and bismuth (Bi)**
- Calculated indexes for path finder elements and base metals (Cu, Zn, Pb)
- Indicates the potential for a **large porphyry system** at Eldorado



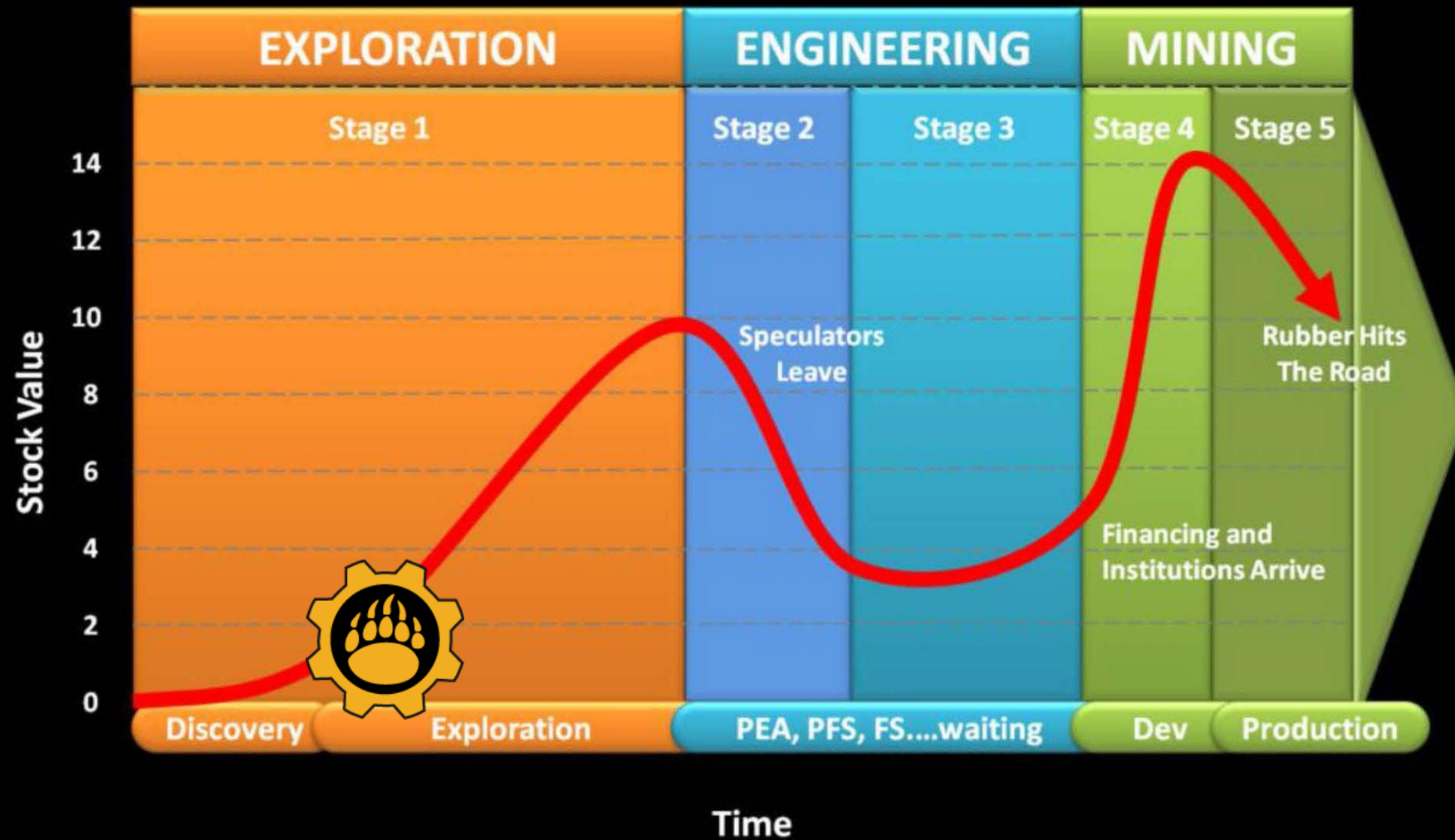


NUMEROUS SIMILARITIES BETWEEN BIG ONE AND GALORE CREEK

- ✓ Extensive propylitic alteration zones
- ✓ Porphyry textures
- ✓ Same geologic setting – Stikinia Terrane (~Jurassic Age)
- ✓ Intrusive units (diorite, monzonite)
- ✓ Characteristics N and NE trending structure (associated with mineralization)
- ✓ High-density of polymetallic quartz-sulphide veining
- ✓ High-grade gold-silver hydrothermal and epithermal veins
- ✓ Buried geophysical anomalies
- ✓ Strong pathfinder element distribution as well as metals ratios consistent with porphyry systems



LASSONDE CURVE – JUNIOR MINER LIFE CYCLE





The Opportunity, Why Buy ?

Juggernaut's sister company, Goliath, generated 2,400% for investors in 20 months. Participants in their seed placement with a warrant received a 3,500%.

Juggernaut has 25,663,939 shares outstanding.
Juggernaut has a MCAP 20M.

Juggernaut has Crescat Capital / Quinton Hennigh as 20.01% shareholders & technical support.





SHARE STRUCTURE AS OF Sept 1, 2025

Common shares issued and outstanding: 30,985,170

Fully diluted share capital: 46,713,540 = \$23,285,349

Details of share purchase warrants outstanding on Sept 1, 2025:

Number of Warrants	Exercise Price	Expiry Date	Remaining Life (Years)
156,400	\$1.40	16-Oct-25	1.29
153,000	\$1.20	12-Nov-25	1.37
9,330	\$2.50	22-Nov-25	1.39
1,617,058	\$1.20	22-Nov-25	1.00
150,000	\$4.20	09-Mar-26	1.69
1,209,261.6	\$2.50	22-Nov-26	2.39
140,246	\$2.50	05-Dec-26	2.43
1,754,101	\$1.00	06-May-27	2.85
3,175,735	\$1.40	11-Jun-27	2.86
300,000	\$0.90	20-Dec-28	4.47
11,308,770	\$0.75	16-May-30	5.00
Total Warrants 19,973,901	Avg. Weighted Price \$1.77		2.43

Details of stock options outstanding on Sept 1, 2025:

Options Outstanding	Exercise Price	Expiry Date	Remaining Life (years)
1,050	\$2.20	30-Dec-25	1.5
232,500	\$3.60	14-May-26	1.88
20,000	\$2.20	08-Mar-27	2.69
283,100	\$1.60	14-Jun-28	3.96
103,000	\$1.60	01-Dec-28	4.42
436,050	\$1.10	13-Jun-29	4.95
1,400,000	\$0.78	June 2035	9
Total Options 2,475,700	Avg. Weighted Price \$1.87		4

CAPITAL STRUCTURE

- No Debt
- Management, insiders, and accredited investors ~ 70%
- Strong support from institutions
- Crescat Capital 19.13%
- 3 Month VWAP \$1.00 / Shares Traded 4,064,498





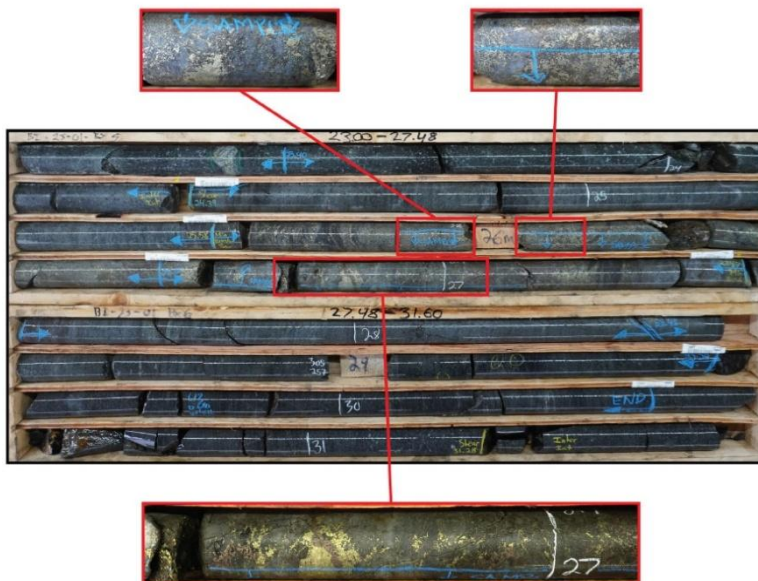
BINGO PROPERTY 100 % OWNED

- 1008 ha in world class geologic setting
- 700 m x 400 m area of strong sulphide mineralization
- **11.42 g/t AuEq over 5.11 m** (7.57 g/t Au, 20.23 g/t Ag, 2.72 % Cu, 0.01 % Pb, 0.1 % Zn) (See News Release from December 12, 2023)
- Strong K-Spar alteration in the northeast indicates proximity to potential porphyry feeder source



Pad 1
Drill Hole: BI-23-01
24.39 - 29.50 m
11.42 gpt AuEq over 5.11 m,
incl. 19.69 gpt AuEq over 2.90 m.

11.42 gpt AuEq OVER 5.11 m WITH ABUNDANT CHALCOPYRITE AND PYRRHOTITE



Pad ID	Hole ID		From (m)	To (m)	Interval (m)	Au (g/t)	Ag (g/t)	Cu (%)	Pb (%)	Zn (%)	AuEq (g/t)
Pad 1	BI-23-01	Interval	24.39	29.50	5.11	7.57	20.23	2.72	0.01	0.10	11.42
		Including	25.58	28.48	2.90	13.05	34.93	4.70	0.02	0.17	19.69



BI-24-31 - Pad 7 - **K-Spar alteration from 33.05 m to 184.50**



There is potential for economic recovery of Au, Ag, Cu, Pb, and Zn from these occurrences based on other mining and exploration projects with similar geochemistry in the area (Skeena Resources Eskay Creek, Goliath Resources Golddigger). Here, AuEq values were calculated using 3-year running averages for metal price, and included provisions for metallurgical recoveries, treatment charges, refining costs, and transportation. Recoveries for Au are reported as 92%, Ag 86%, Pb 94%, Zn 96%. It is assumed that Cu can be recovered with the Zn at the same recovery rate of 96%. The quoted reference of metallurgical recoveries is not from JuggerNaut's projects and there is no guarantee that such recoveries will ever be achieved, unless detailed metallurgical work can be eventually completed.



TSX-V: JUGR
FSE: 4JE
OTCQB: JUGRF

For additional information on any
of these properties please contact:

Dan Stuart

CEO and President, Director

Dan@juggernautexploration.com

Juggernaut Exploration Ltd

300 – 1055 West Hastings Street,
Vancouver, BC V6E 2E9

Telephone: 604-559-8028

Fax: 604-684-6024





ADDITIONAL INFORMATION

Rein Turna, P. Geo. is the qualified person as defined by National Instrument 43-101, for Juggernaut Exploration Ltd. projects, and supervised the preparation of, and has reviewed and approved, the technical information in this release. Further information regarding Juggernaut's Midas and Bingo properties can be sourced online at www.juggernautexploration.com or by contacting Dan Stuart at 604-559-8028.

All rock, channel, and talus fine samples were crushed and pulverized at ALS Canada Ltd.'s lab in North Vancouver, Terrace, BC, or Reno, Nevada. ALS is either Certified to ISO 9001:2008 or Accredited to ISO 17025:2005 in all of its locations. The resulting sample pulps were analyzed for gold by fire assay in Reno, Nevada or in Vancouver, BC. The pulps were also assayed using multi-element aqua regia digestion at ALS Canada Ltd.'s lab in Vancouver, BC. The silt samples were sieved and assayed at ALS Canada Ltd.'s lab in Vancouver, BC. The coarse reject portions of the rock, channel and talus fine samples, as well as the pulps, were shipped to J2 Syndicate's storage facility in Terrace, BC. The silt samples were disposed of after analysis. All samples were analyzed using ALS Canada Ltd.'s assay procedure ME-ICP41, a 1:1:1 aqua regia digestion with inductively-coupled plasma atomic emission spectrometry (ICP-AES) or inductively-coupled plasma mass spectrometry (ICP-MS) finish for 35 elements as well as the Au-AA24 lead-collection fire assay fusion procedure with atomic absorption spectroscopy (AAS) finish. Any results greater than 100 ppm for silver or 10,000 ppm copper, lead and zinc were additionally assayed using ALS's OG46 method particular to each element. This method used an HNO₃-HCl digestion followed by ICP-AES (or titrimetric and gravimetric analysis). Gold values of greater than 10 ppm Au were assayed by the Au-GRA22 method which includes a fire-assay fusion procedure with a gravimetric finish. Blanks and duplicates QA/QC samples were inserted into channels sample laboratory batches. Additionally, and 10% sub-sample of pulp and reject material was sent to Activation Laboratories in Ancaster Ontario, for check-analysis.

The reader is cautioned that grab samples are spot samples which are typically, but not exclusively, constrained to mineralization. Grab samples are selective in nature and collected to determine the presence or absence of mineralization and are not intended to be representative of the material sampled.