



TSX-V: JUGR
FSE: 4JE
OTCQB: JUGRF



**ON TRACK FOR
DISCOVERY**

June 2024



FORWARD LOOKING STATEMENT

This presentation may contain forward-looking statements, including management's assessments of future plans & operations, expectations of future production, cash flow, earnings, property options, TSX approval and closing of a financing. These statements are based on current expectations that involve a number of risks & uncertainties, which could cause actual results to differ materially from those anticipated.

Forward-looking statements may be identified by the use of words such as “believes”, “anticipates”, “expects”, “estimates”, “may”, “could”, “would”, “will”, or “plan”. Since forward looking statements are based on assumptions and address future events and conditions and property options by their very nature they involve inherent risks and uncertainties.

Actual results relating to, among other things, results of exploration, reclamation, capital costs, and the company's financial condition and prospects, could differ materially from those currently anticipated in such statements for many reasons such as but not limited to; changes in general economic conditions and conditions in the financial markets; changes in demand and prices for the minerals the Company expects to produce; litigation, legislative, environmental and other judicial, regulatory, political and competitive developments; technological and operational difficulties encountered in connection with the Company's activities; and changing foreign exchange rates and other matters discussed in this presentation.

Persons should not place undue reliance on the Company's forward-looking statements. Further information regarding these and other factors, which may cause results to differ materially from those projected in forward-looking statements, are included in the filings by the Company with securities regulatory authorities. The Company does not assume any obligation to update or revise any forward looking statement that may be made from time to time by the Company or on its behalf, except in accordance with applicable securities laws, whether as a result of new information, future events or otherwise.

The TSX Exchange has not reviewed and does not accept responsibility for the adequacy or accuracy of the contents of this presentation, that has been prepared by management.

This presentation does not constitute an offer to sell or a solicitation of an offer to buy any securities of the Company in any jurisdiction. Any such offer or solicitation will be made only in accordance with all applicable laws. The common shares of the Company will not be and have not been registered under the United States Securities Act of 1933, as amended, and may not be offered or sold in the United States, or to a U.S. person, absent registration or applicable exemption therefrom.



Crescat Capital LLC's Dr. Hennigh & Kevin Smith

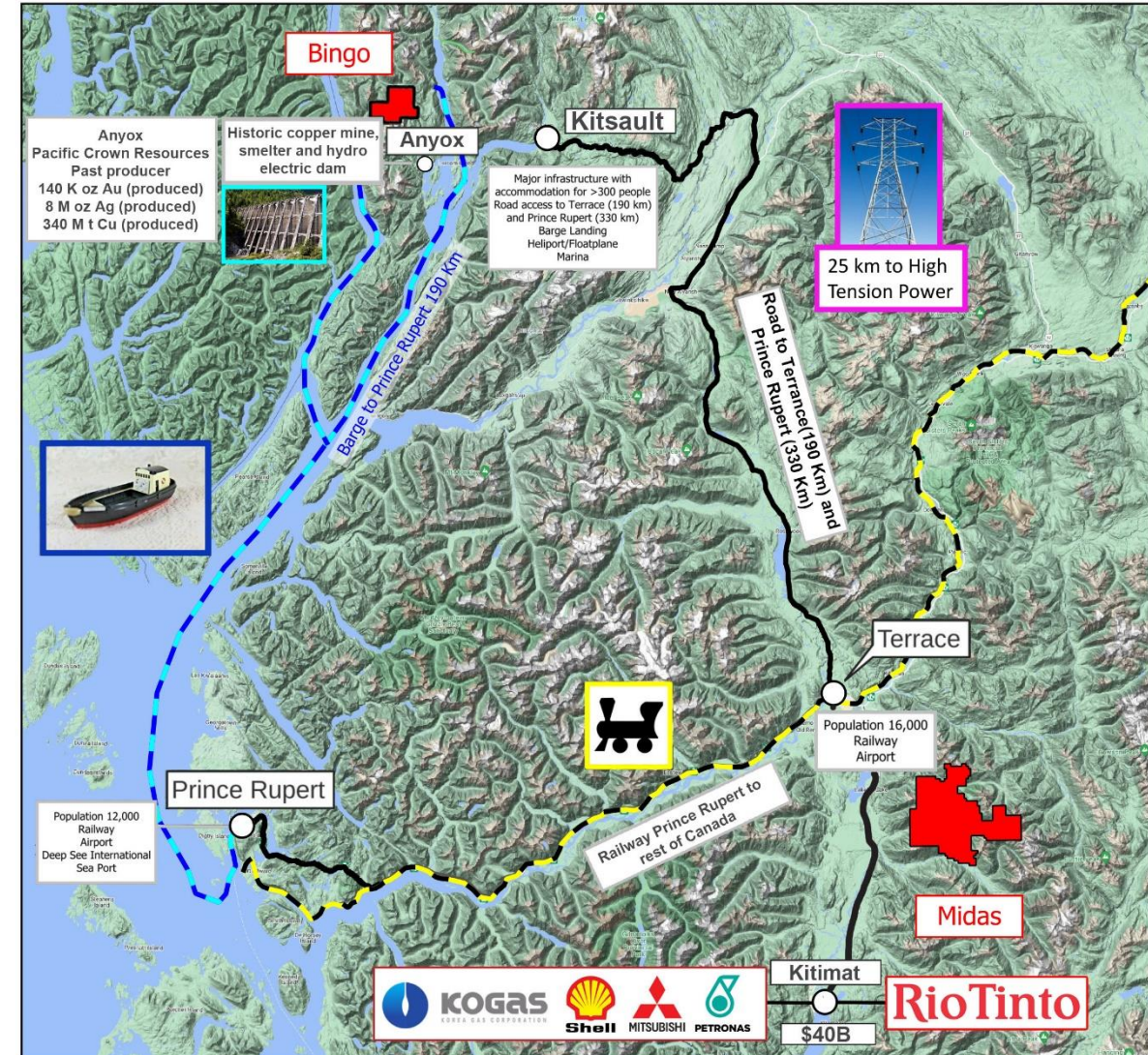
Dr. Hennigh stated, "Very promising results from 2023's maiden drill program confirmed strong potential for "Surebet" style intrusive-related gold-base metal lodes at Bingo. In addition, follow up drilling at Midas continues to demonstrate the presence of a large volcanogenic massive sulfide system in need of further work. With interest in the mining exploration space quickly heating up, it is critical that companies like Juggernaut get back to the job of making discovery. I look forward to working with the Company's team as plans are made for this year's drill campaign at both of these exciting projects. "

"We look forward to helping Juggernaut continue their work at Bingo and Midas in the coming drill season, given the potential for a significant discovery, remarked **Kevin Smith,** Crescat's founder and Chief Investment Officer. "This is the same exploration team that delivered a major gold and silver discovery for us at Goliath Resources' Surebet. They are highly capable of doing the same at one or both of these targets."



CORPORATE OVERVIEW

- Juggernaut Exploration Ltd – A New Ground Floor Opportunity
- Focused on Northwestern British Columbia With Exposure to Over 9 Precious and Base Metal Projects
- **Seasoned Team:** 30 Years of a Proven Track Record of Discovery Culminating in ~1 Billion Dollars of Value
- **Bingo (High Grade Shear Hosted System)**
- **Midas Property (Kuroko Style VMS system)**
- **Rapid Glacial and Snowpack Abatement** resulting in discoveries





MANAGEMENT AND DIRECTORS

Dan Stuart, President & CEO, Director

- >20 years of capital market experience
- >100 million dollars raised in the natural resource sector
- Founding member and capitalizer of several private mineral syndicates J2, DSM, YCS, B2
- Institutional clients in both the Americas and Europe

William Jung, Director & CFO

- 35 years of experience in finance and business
- Former chartered accountant involved in management of companies on the TSX
- >25 years experience in the management of companies publicly listed on the TSX

Jim McCrea, Director

- 25 years experience in exploration and mining
- 20 years in mineral resource estimation including Cumberland Resources
- Ore body modelling and resource estimation for the successfully targeted take over company Cumberland Resources Ltd. By Agnico-Eagle Mines Ltd.

Chris Verrico, Director

- >20 years of managing mineral exploration projects in BC, Yukon, Alaska, Nunivut
- Experience as a contractor with extensive northern rural-remote infrastructure construction and contract mining projects

Peter Bryant, Director

- 45 years of experience in international finance and investment banking
- Former director of investment banking with Standard Chartered Group
- Worked for Hill Samuel Group and Guinness Mahon Holding's, two of the prestigious merchant banking house in London, England

Dr. Quinton Hennigh

Technical Advisor

- World renowned exploration geologist with >30 years of experience with major miners Homestake, Newcrest and Newmont. CHM & President of Novo TSX.V: NVO

Bill Chornobay

Program Manager

- >30 years proven track record; discoveries resulting in ~1 billion dollars in value.

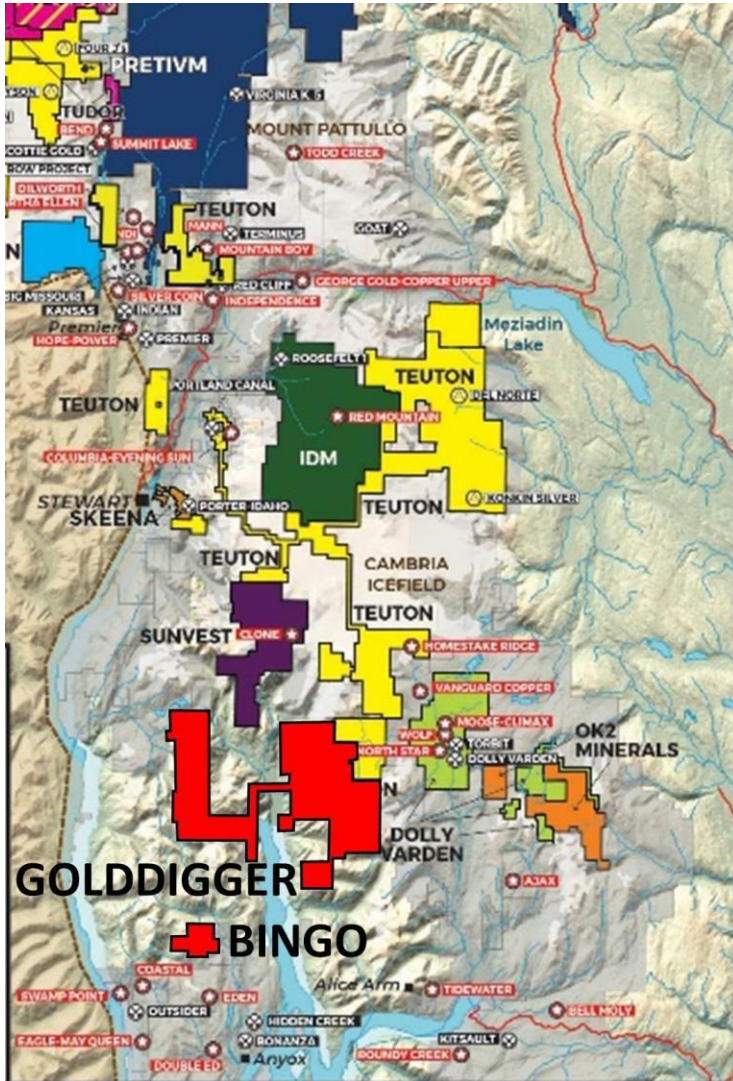


BINGO PROPERTY

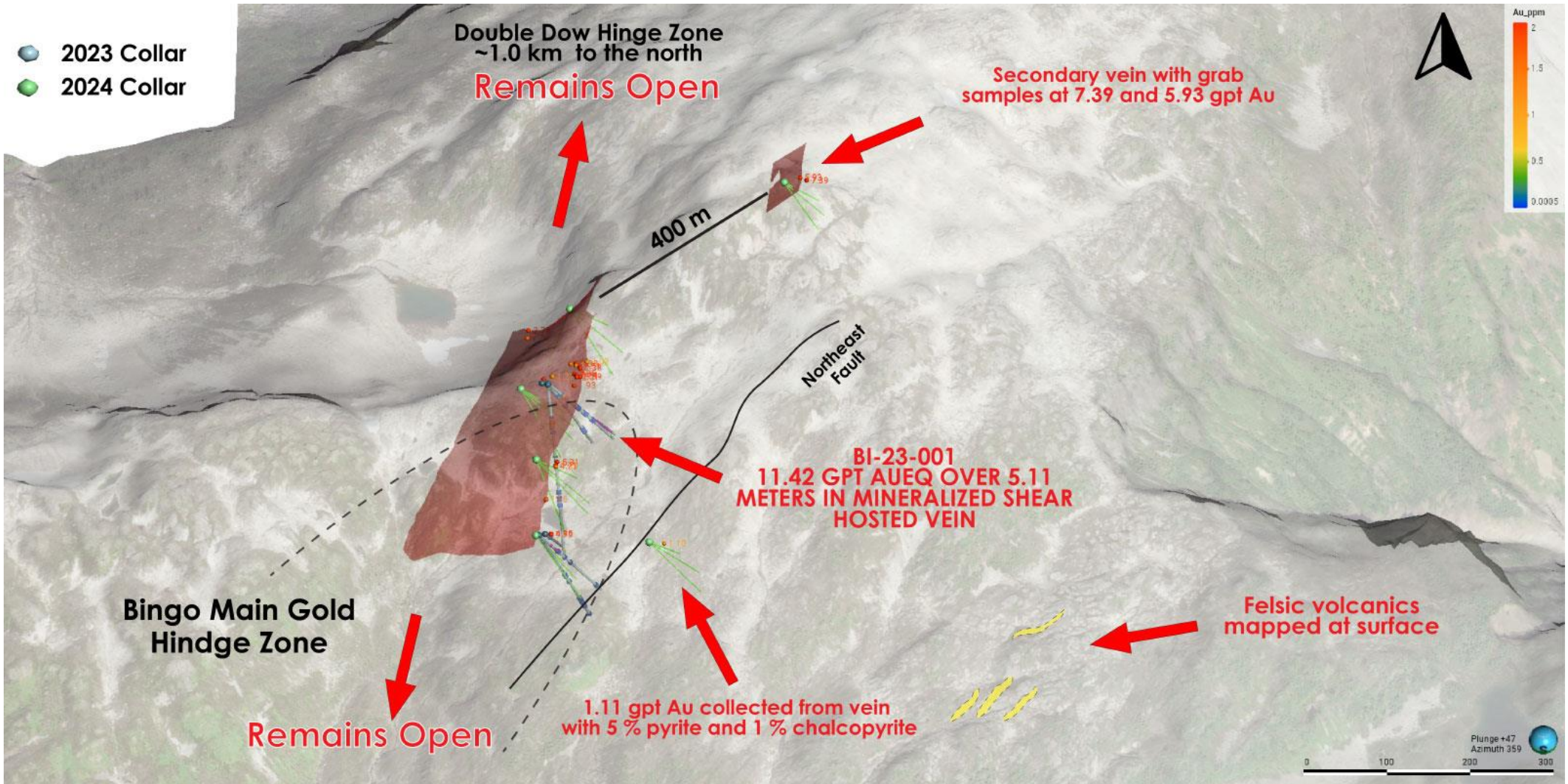
[BINGO VIDEO 2024](#)



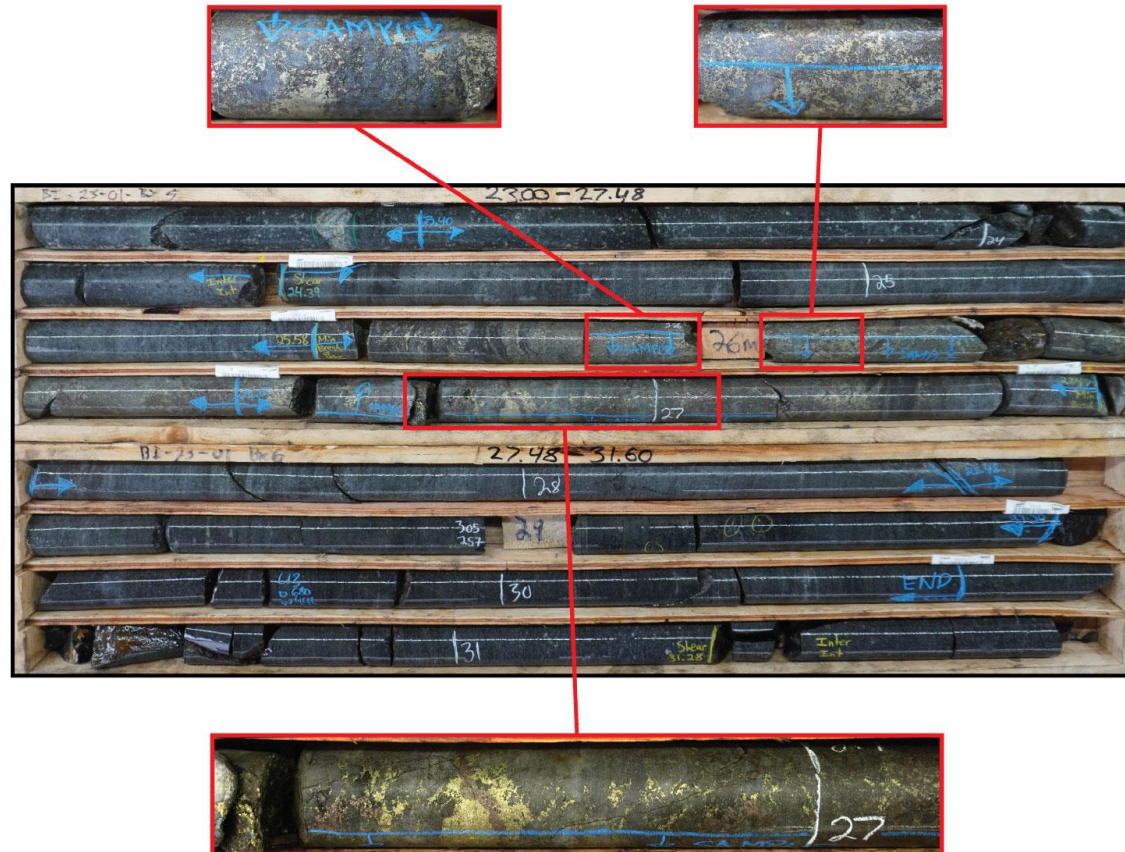
Bingo Property



- Located 45 km SSW of Stewart, BC and 28 km W of Kitsault, BC and 12 km to tidewater landing and roads in the historic mining town of Anyox.
- Bingo property covers an area of 1008 ha
- **Located within the Eskey Rift and Golden triangle** where the vast majority of major deposits in British Columbia have been found.
- **The Bingo property is located in the southern part of the Eskey Rift** within the Golden Triangle
- The Eskey Rift is a geological control for over 60 volcanogenic massive sulphide (VMS) deposits, including the world's richest VMS exhalative deposit: the Eskey Creek gold-silver mine
- The southern end of the Eskey Rift records a near-continent, mid-ocean-ridge setting ideal for the development of VMS-type deposits
- Early and Middle Jurassic volcano-magmatic events generated the major metallogenetic endowments within the rift complex
- Several past-producing mines and new deposits in the immediate vicinity, including Anyox, Dolly Varden, Homestake Ridge and Golddigger Surebet discovery



11.42 gpt AuEq OVER 5.11 m WITH ABUNDANT CHALCOPYRITE AND PYRRHOTITE

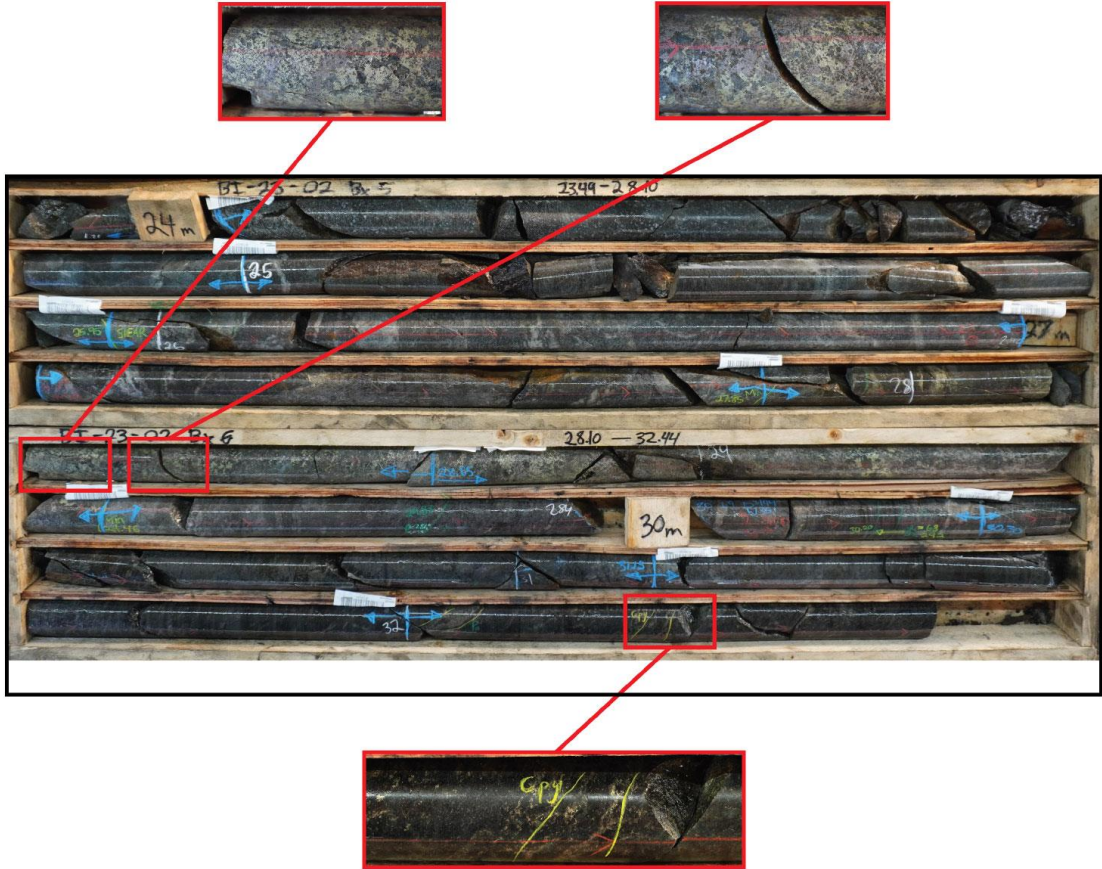


Pad ID	Hole ID		From (m)	To (m)	Interval (m)	Au (g/t)	Ag (g/t)	Cu (%)	Pb (%)	Zn (%)	AuEq (g/t)
Pad 1	BI-23-01	Interval	24.39	29.50	5.11	7.57	20.23	2.72	0.01	0.10	11.42
		Including	25.58	28.48	2.90	13.05	34.93	4.70	0.02	0.17	19.69



Pad 1
 Drill Hole: BI-23-02
 25.95 - 33 m
 4.81 gpt AuEq over 7.05 m,
 incl. 9.49 gpt AuEq over 3.30 m.

9.49 gpt AuEq OVER 3.30 m WITH ABUNDANT CHALCOPYRITE AND PYRRHOTITE

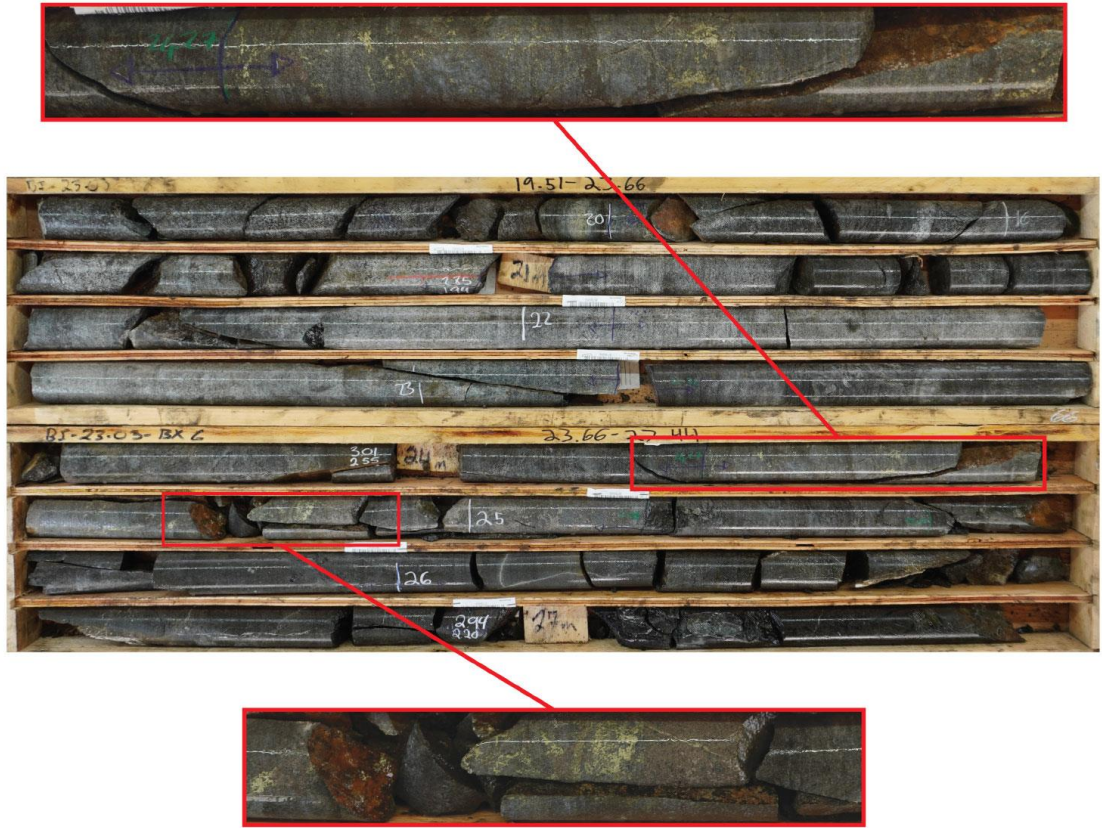


Pad ID	Hole ID		From (m)	To (m)	Interval (m)	Au (g/t)	Ag (g/t)	Cu (%)	Pb (%)	Zn (%)	AuEq (g/t)
Pad 1	BI-23-02	Interval	25.95	33.00	7.05	2.86	8.72	1.39	0.01	0.07	4.81
		Including	27.85	31.15	3.30	5.69	17.36	2.70	0.01	0.14	9.49



Pad 1
 Drill Hole: BI-23-03
 23.22 - 29.00 m
 2.22 gpt AuEq over 5.78 m,
 incl. 10.67 gpt AuEq over 0.92 m.

10.67 gpt AuEq OVER 0.92 m WITH ABUNDANT CHALCOPYRITE AND PYRRHOTITE



Pad ID	Hole ID		From (m)	To (m)	Interval (m)	Au (g/t)	Ag (g/t)	Cu (%)	Pb (%)	Zn (%)	AuEq (g/t)
Pad 1	BI-23-03	Interval	23.22	29.00	5.78	1.39	4.06	0.58	0.01	0.07	2.22
		Including	24.27	25.19	0.92	6.77	21.30	2.69	0.02	0.29	10.67

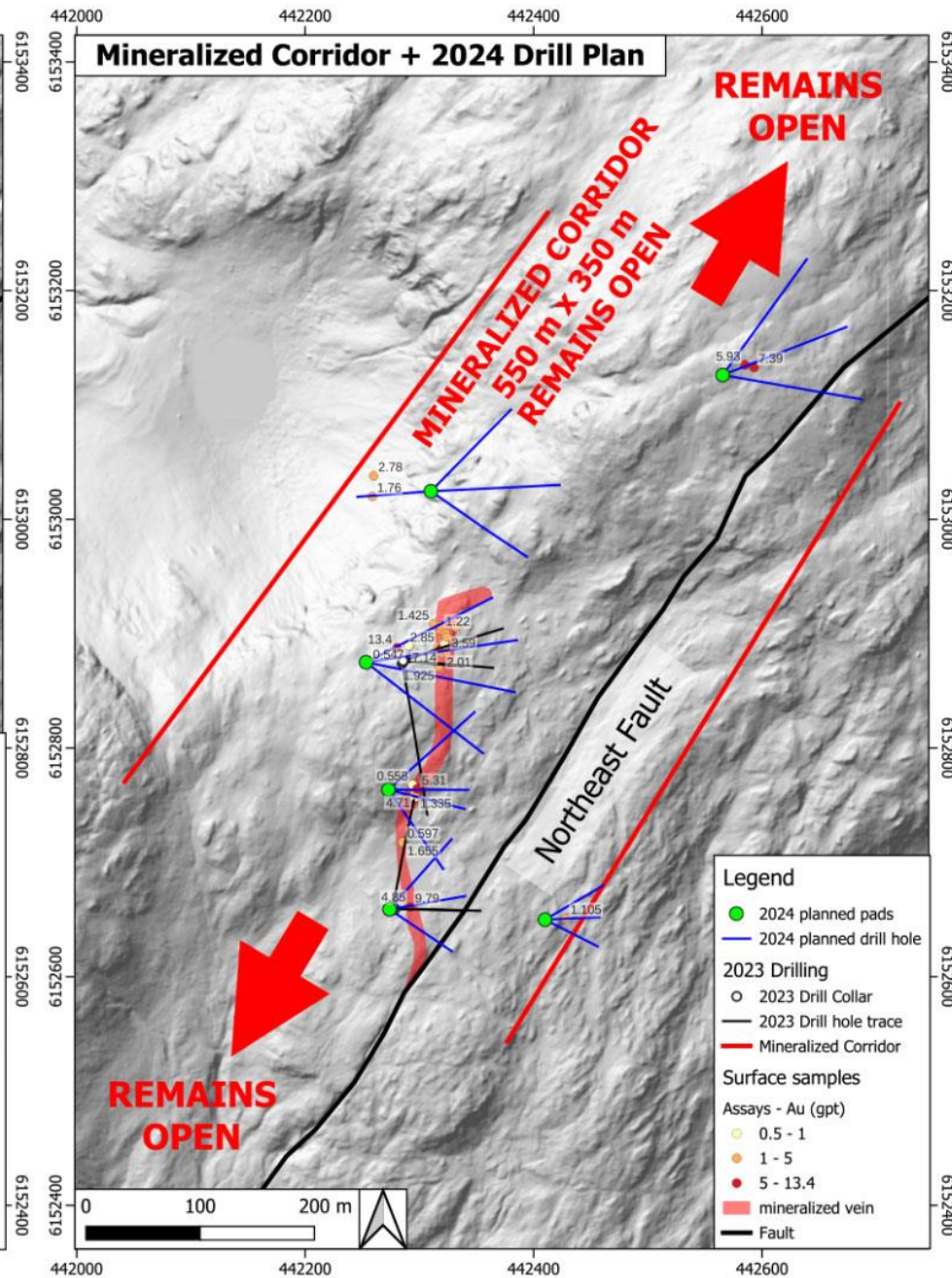
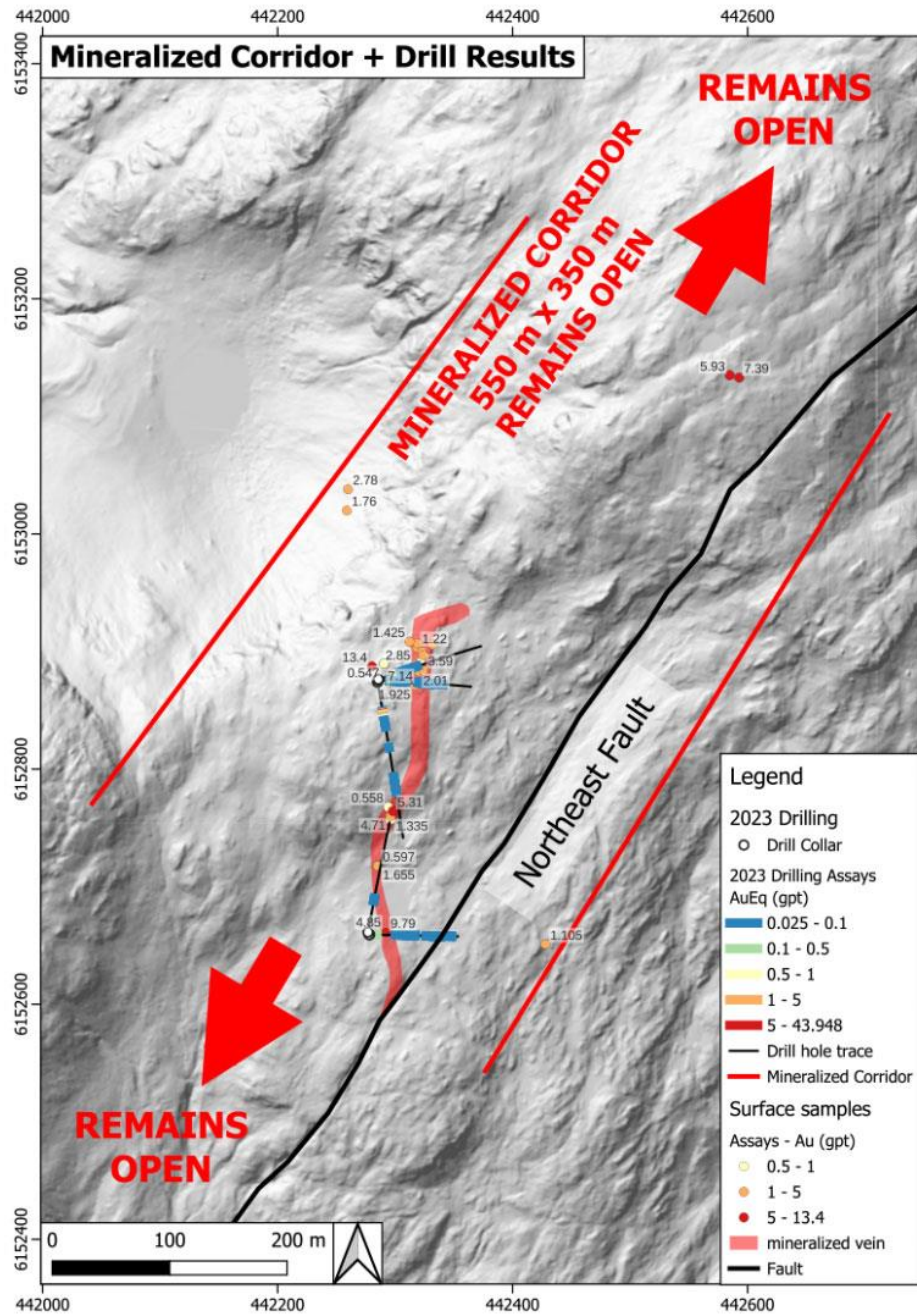


Pad 1
 Drill Hole: BI-23-04
 41.1 - 52.22 m
 4.23 gpt AuEq over 10.12 m,
 incl. 6.74 gpt AuEq over 5.89 m.

6.74 gpt AuEq OVER 5.89 m WITH ABUNDANT CHALCOPYRITE AND PYRRHOTITE

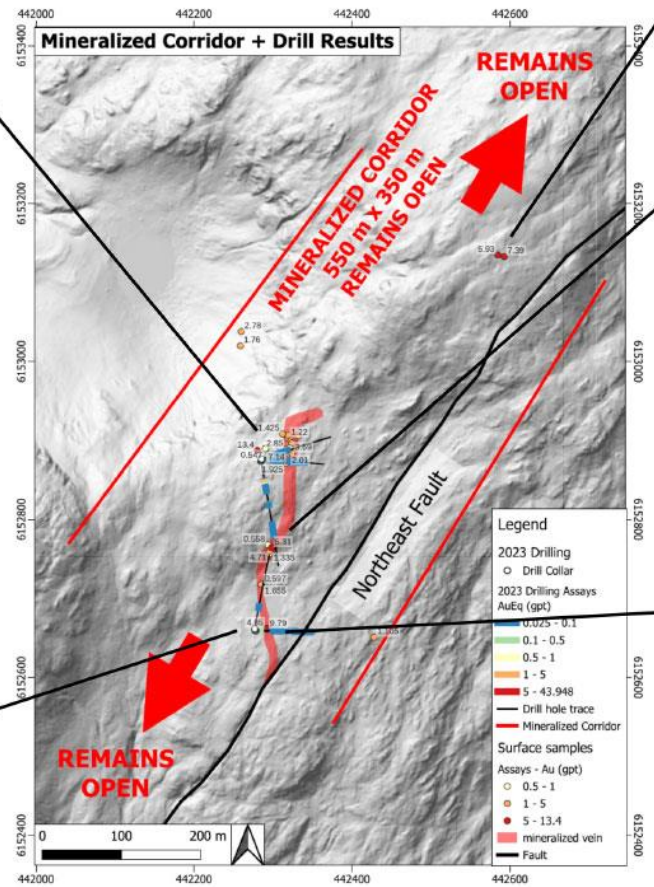


Pad ID	Hole ID		From (m)	To (m)	Interval (m)	Au (g/t)	Ag (g/t)	Cu (%)	Pb (%)	Zn (%)	AuEq (g/t)
Pad 1	BI-23-04	Interval	41.1	51.22	10.12	2.52	11.05	1.16	0.01	0.15	4.23
		Including	42.18	48.07	5.89	4.01	17.37	1.85	0.01	0.24	6.74

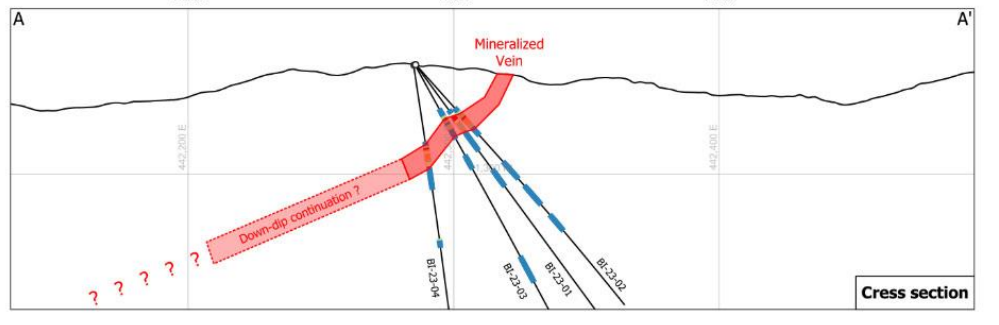
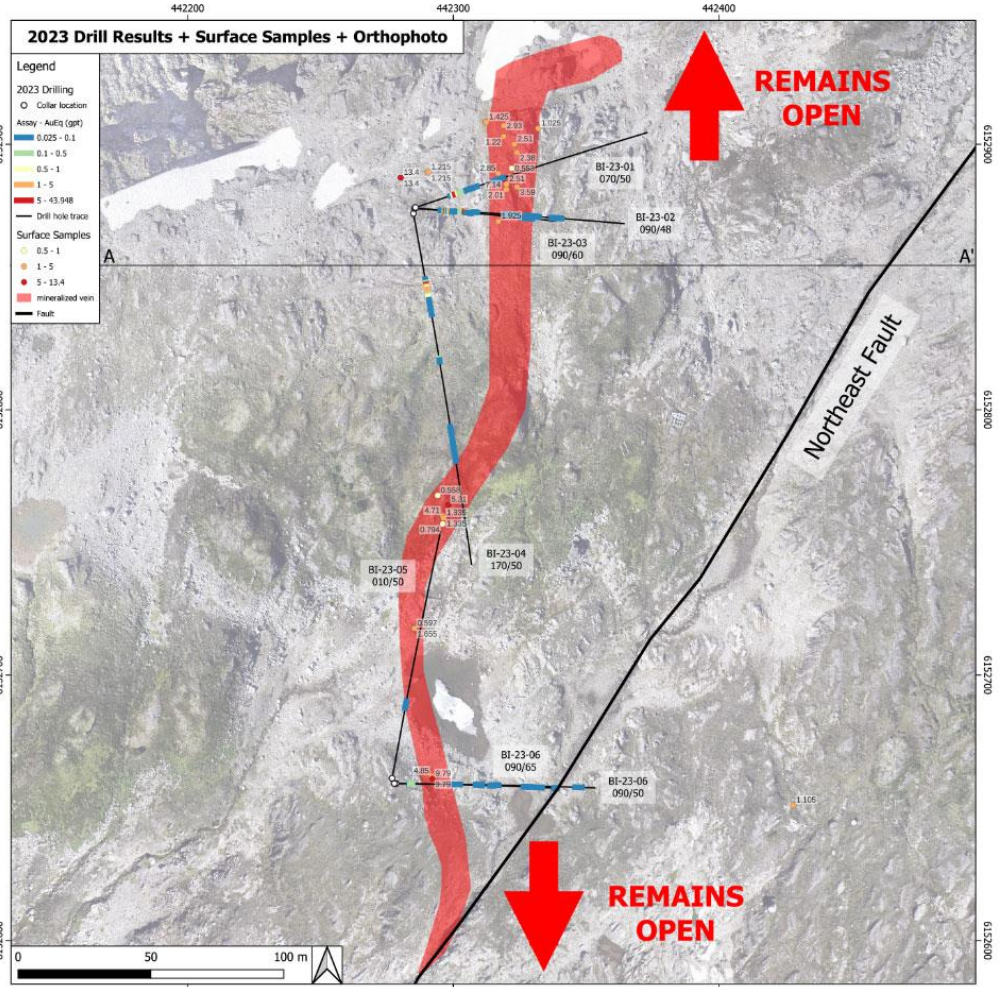
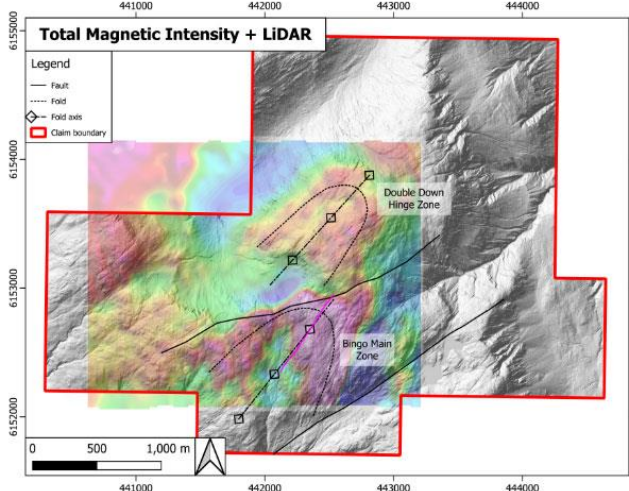
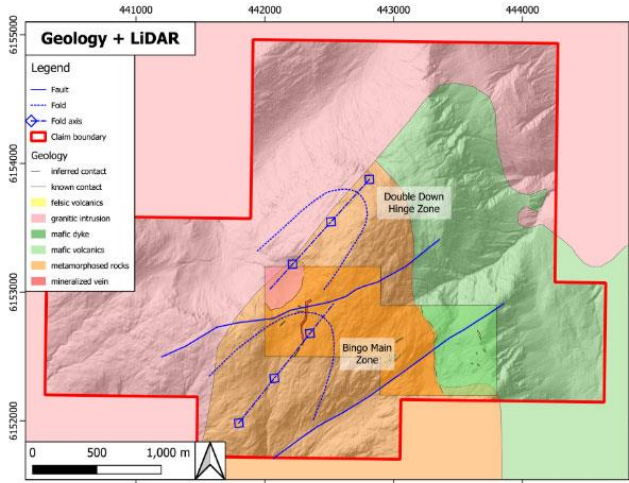


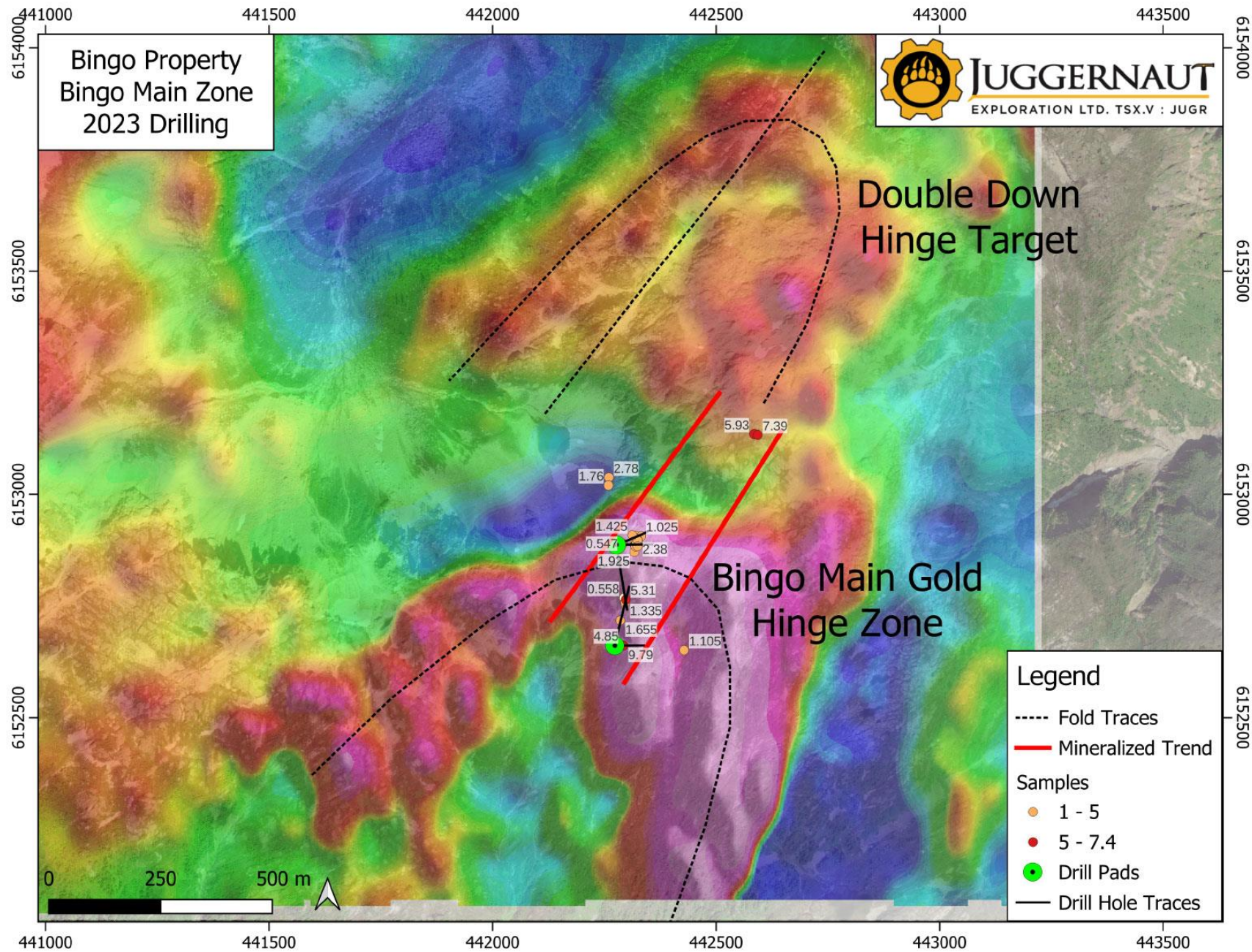
2024 Drill Plan

- 2500 m from 6 Pads
- Drill holes designed to expand known mineralization
- Test additional shear zones



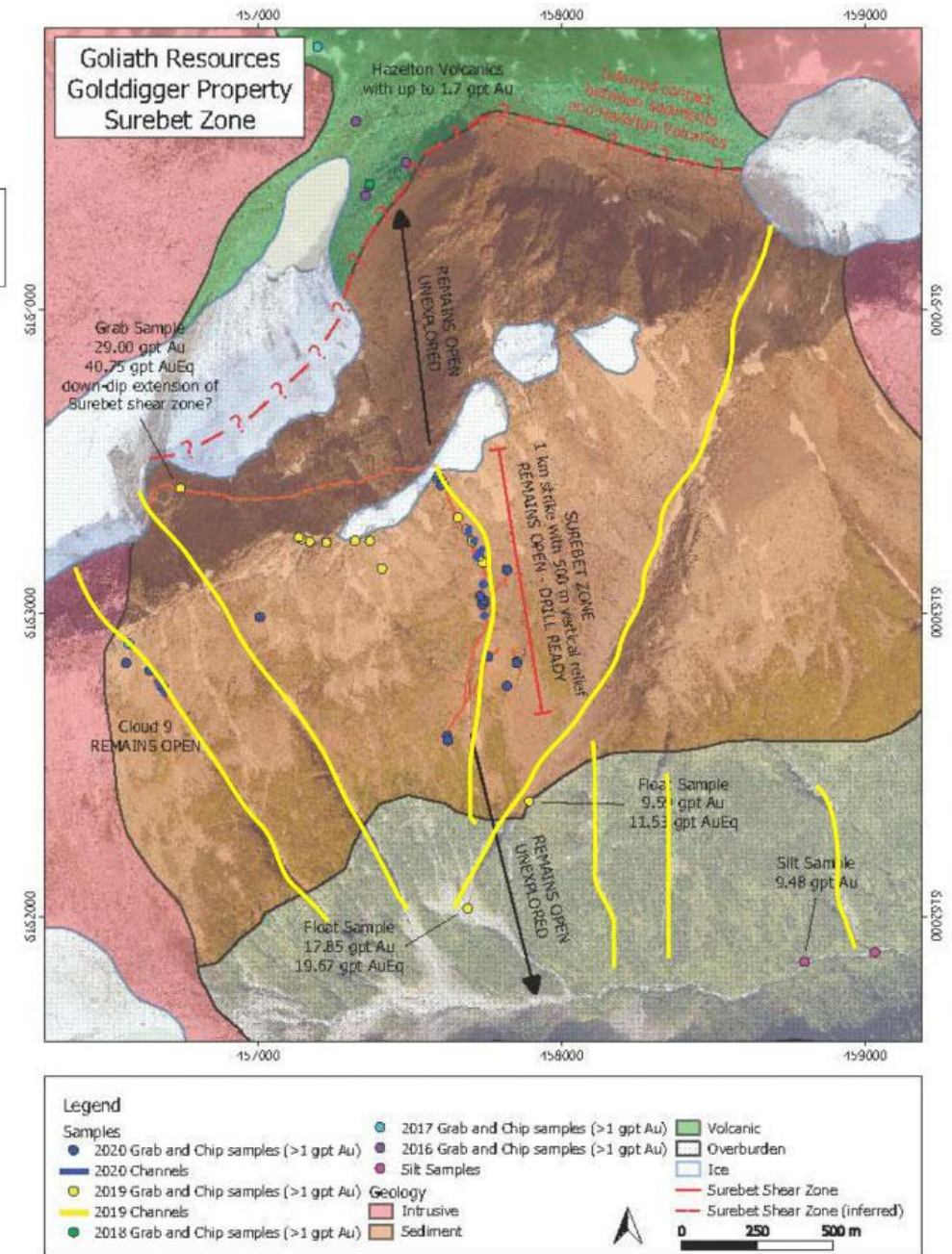
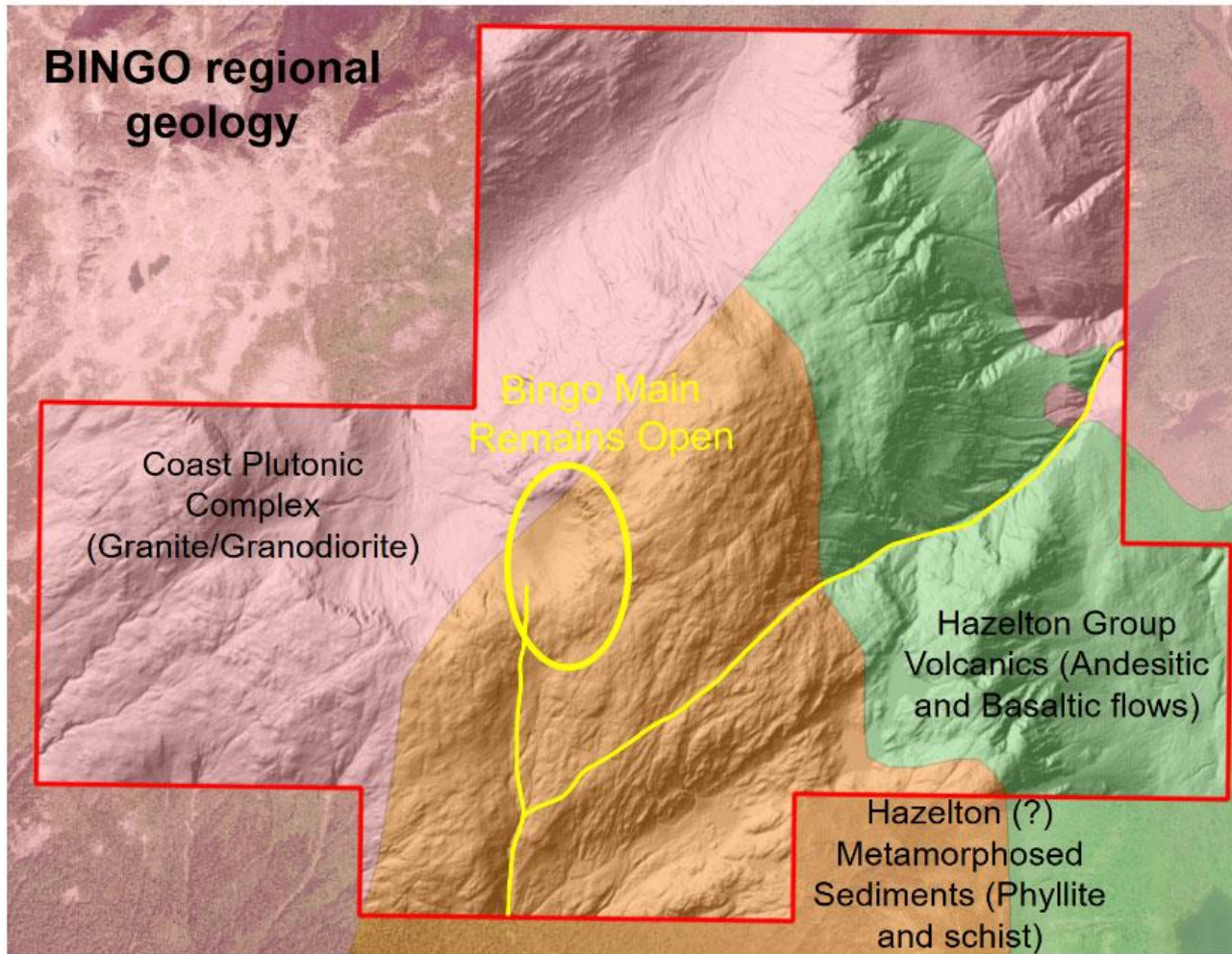
Bingo Property





Same geological units and indicated structures as Goliath Resources Surebet Discovery

Rein Turna, Geologist, P. Geo., is the qualified person as defined by National Instrument 43-101, for Juggernaut Exploration projects, and supervised the preparation of, and has reviewed and approved, the technical information in this release.





Sample from Bingo Main Zone



Samples from Surebet



Rein Turna, Geologist, P. Geo., is the qualified person as defined by National Instrument 43-101, for Juggernaut Exploration projects, and supervised the preparation of, and has reviewed and approved, the technical information in this release.

Samples are visually very similar, with similar mineralogy and geochemistry to Goliath Resources Surebet Discovery. Surebet is a shear hosted system within Hazelton sedimentary rocks. At Bingo the known mineralization comes from strongly altered and silicified sediments and intrusives where textures have been overprinted.

Bingo samples could come from potential shears/structures in sediments related to an underlying intrusive

Similarities between Bingo and the Goliath Resources Surebet Discovery

- ✓ **The Bingo property contains the same geological units as Surebet (Hazelton Volcanics and related sediments** which host the mineralized shear zone) including intrusives
- ✓ Mineralization at Bingo includes **pyrite, chalcopyrite (Cu), galena (Pb), pyrrhotite,** similar to what is observed at Surebet
- ✓ **Gold rich fluids intruded and altered the host rock** in a potential shear zone
- ✓ Both properties are **within the Eskay Rift** known to be a fertile area for mineral deposits in the Golden Triangle
- ✓ Both Bingo Main and Surebet are **located on a N-S oriented lineament that intersect a prominent NE trending lineament**

Rein Turna, Geologist, P. Geo., is the qualified person as defined by National Instrument 43-101, for Juggernaut Exploration projects, and supervised the preparation of, and has reviewed and approved, the technical information in this release.



Inaugural Drill Results Comparison

BINGO (Juggernaut Exploration)

- Average grade of 5.67 g/t AuEq
- Average interval width of 7.02 meters (true width)
- **4 holes with average 40 gram*meter AuEq**
- Grades up to 11.42 g/t AuEq over 5.11 meters (58 gram*meter AuEq)
- 100 % of the holes intersected Au mineralization
- **Gold, Copper, Silver, (Lead, Zinc)**
- **Stratigraphically closer to potential source**
- 12 days of drilling
- Great expansion potential in accessible terrain
- **\$5 M MCap (Jan 12, 2024)**

SUREBET (Goliath Resources)

- Average grade of 6.29 g/t AuEq
- Average interval width of 5.87 meters (true width)
- **24 holes with average 37 gram*meter AuEq**
- Grades up to 6.37 g/t AuEq over 35.72 meters (227 gram*meter AuEq)
- 100 % of the holes intersected Au mineralization
- **Gold, Silver, Lead, Zinc, (Copper)**
- **Stratigraphically higher in the system**
- 86 days of drilling
- Expansion limited due to terrain challenges
- **\$50 M MCap (Jan 12, 2022)**



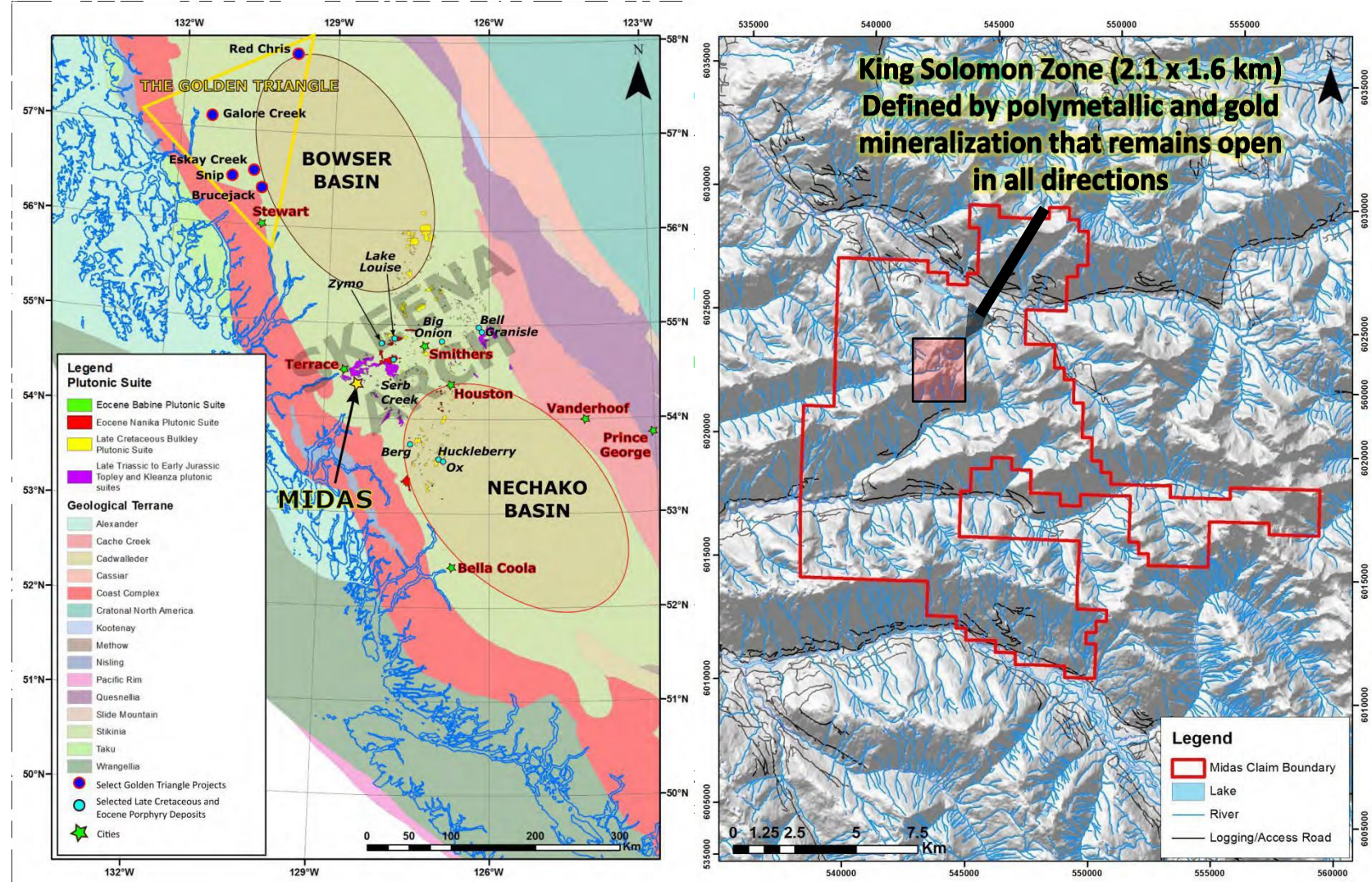
MIDAS VMS PROPERTY

[MIDAS VIDEO 2024](#)



MIDAS PROPERTY

- The Midas Property is **20,803 ha**
 - 100 % controlled by Juggernaut
- Logging road access on property
- 14 km to major power, CN rail, and roads
- Further, 10 km to Terrace, BC and major infrastructure, and further 45 km from Kitimat deep seaport and Rio Tinto smelter
- **World class geological setting** with strong potential for VMS Eskay Creek style mineralization





2007 BCGS MAP by M. McKeown and J. Nelson (modified)

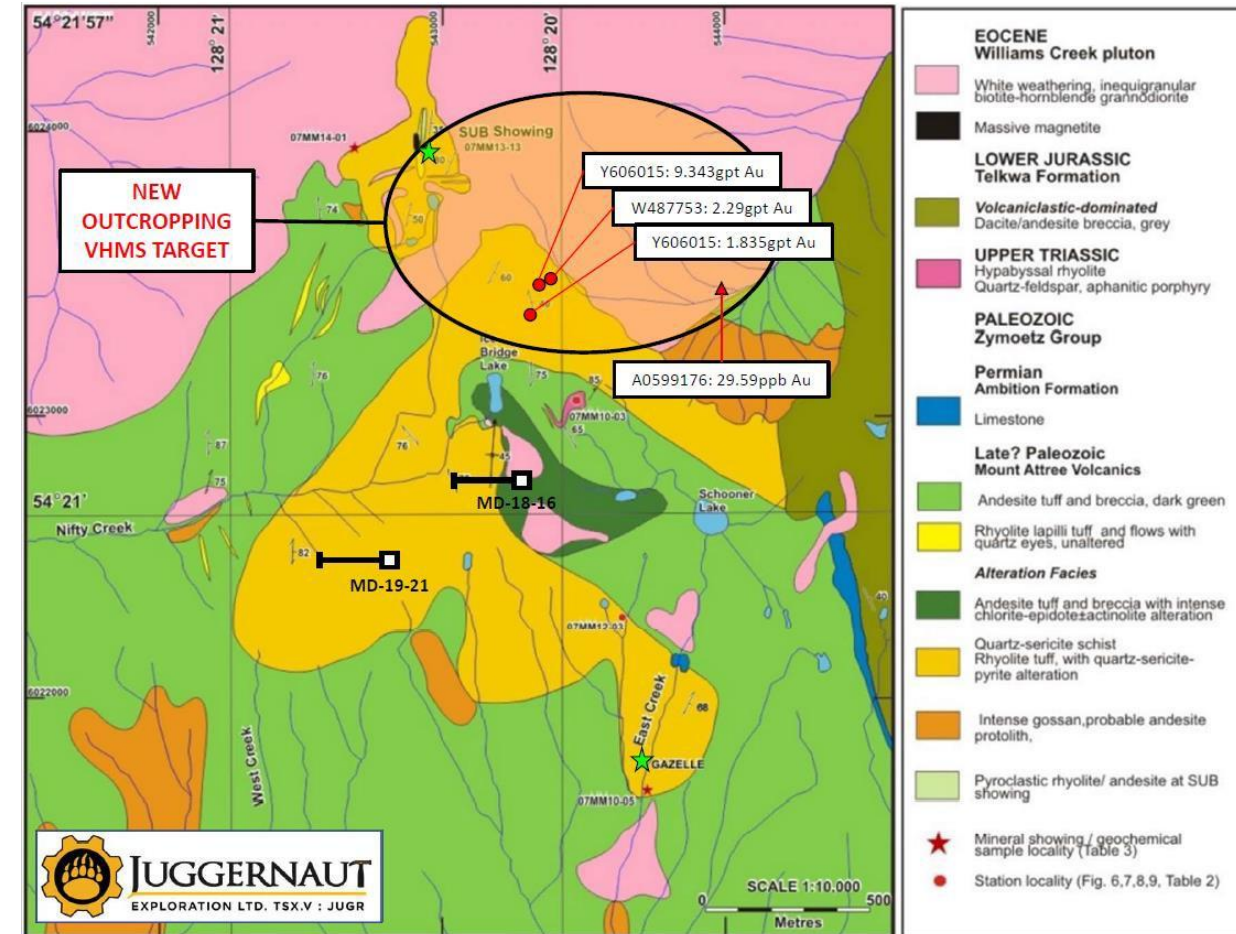
Stratigraphy and Alteration

- Conformable sequence of layered Paleozoic felsic to intermediate volcanoclastic rocks
 - Compositionally variable sequence that consists largely of:
 1. **Andesitic flows**, tuff and breccia with
 2. **Rhyolite flows**, tuff and breccia
- Extensive, intense gossans that occur in the quartz sericite schist, as well as in the silicified, chlorite-pyrite andesite tuff.

“Through regional and local mapping, the stratigraphy of Paleozoic and Jurassic volcanic rocks in the area southeast of Terrace has been clarified and a new unit that is prospective for VHMS deposits has been identified.”

M. McKeown 2007, BCGS

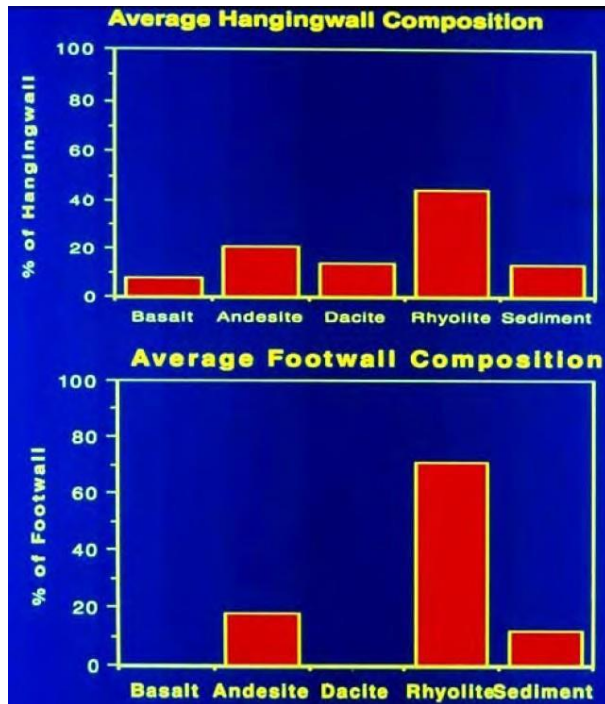
<https://juggernautexploration.com>



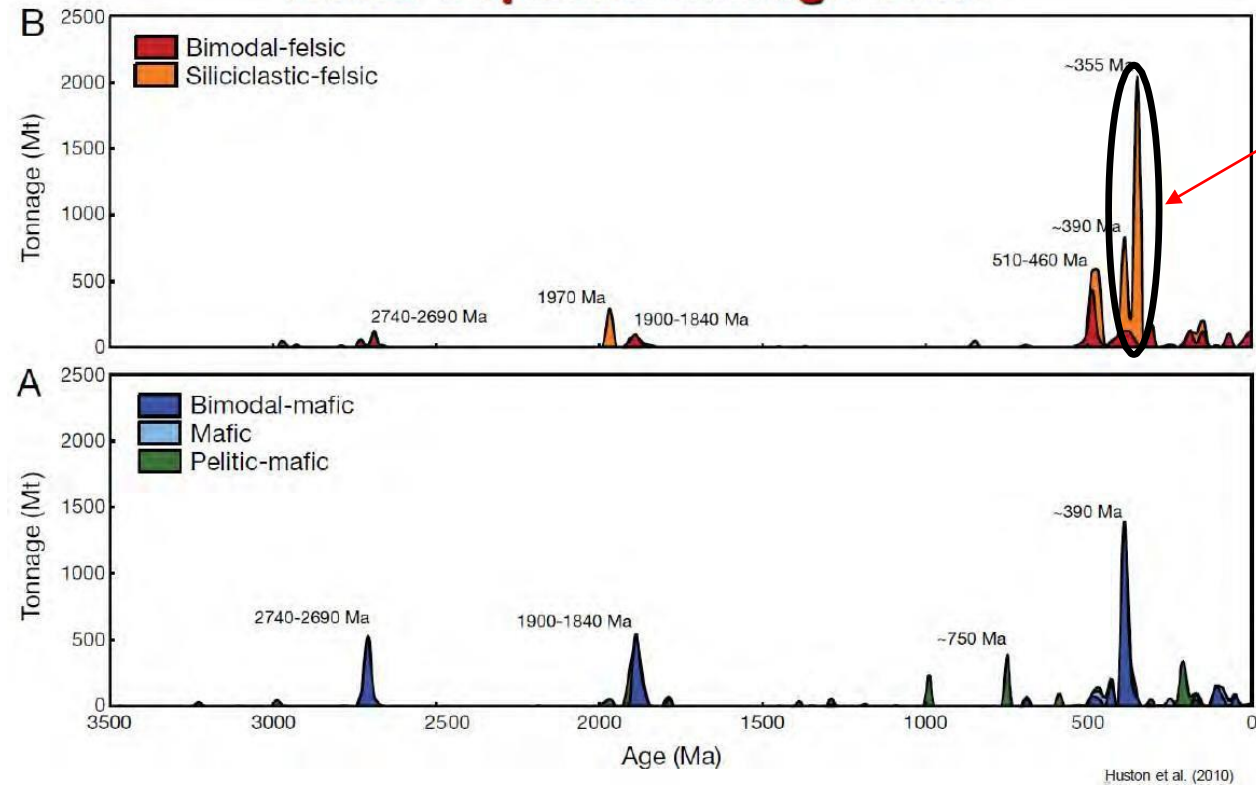


VHMS Mineralization Potential

VHMS Deposits through Time



Midas - Mt Attree Volcanics
Predominantly Andesite/Rhyolite

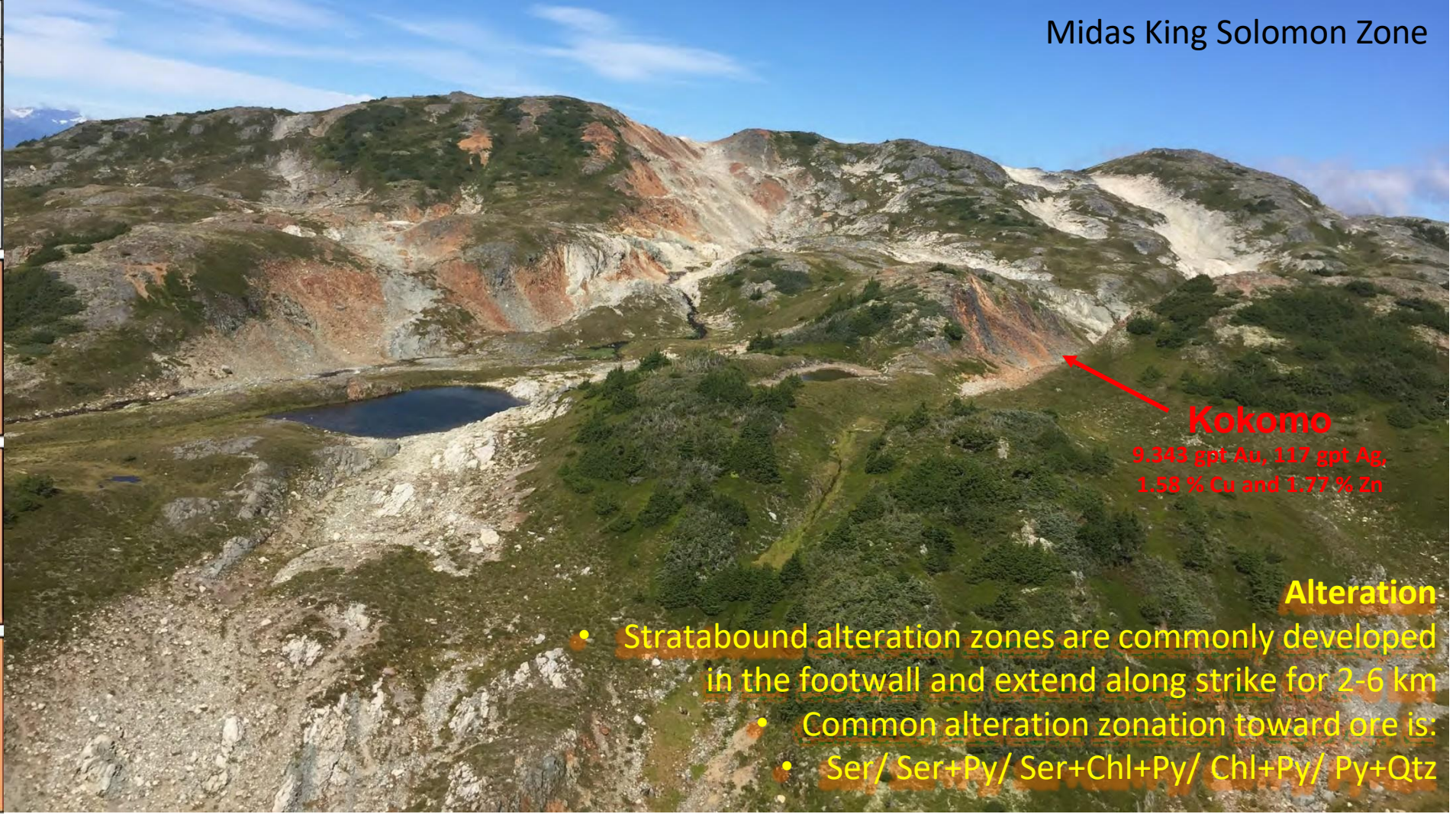
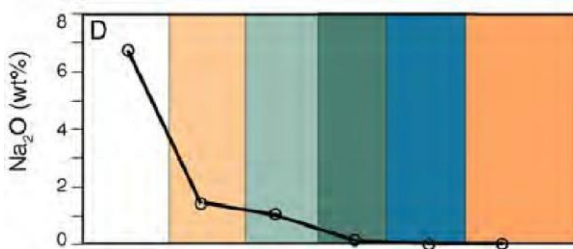
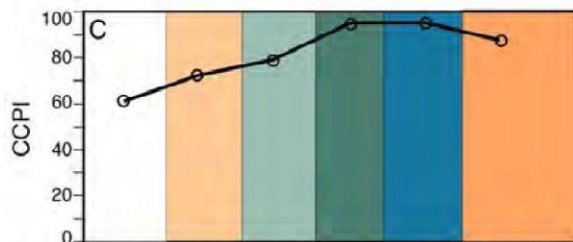
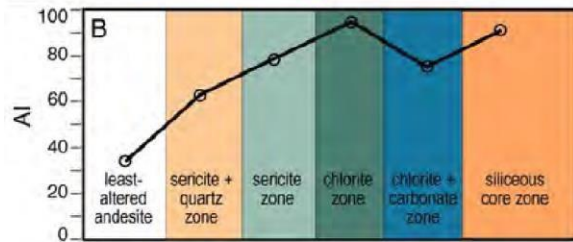
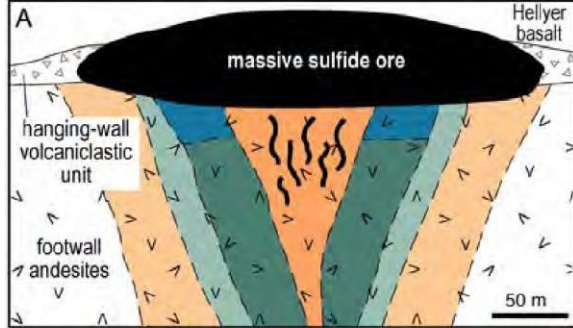


Mt Attree Volcanics
Mississippian in age

King Solomon Zone Discovery has the right age and type of rocks known to host the majority of VHMS deposits



Midas King Solomon Zone



Kokomo

9.343 gpt Au, 117 gpt Ag,
1.58 % Cu and 1.77 % Zn

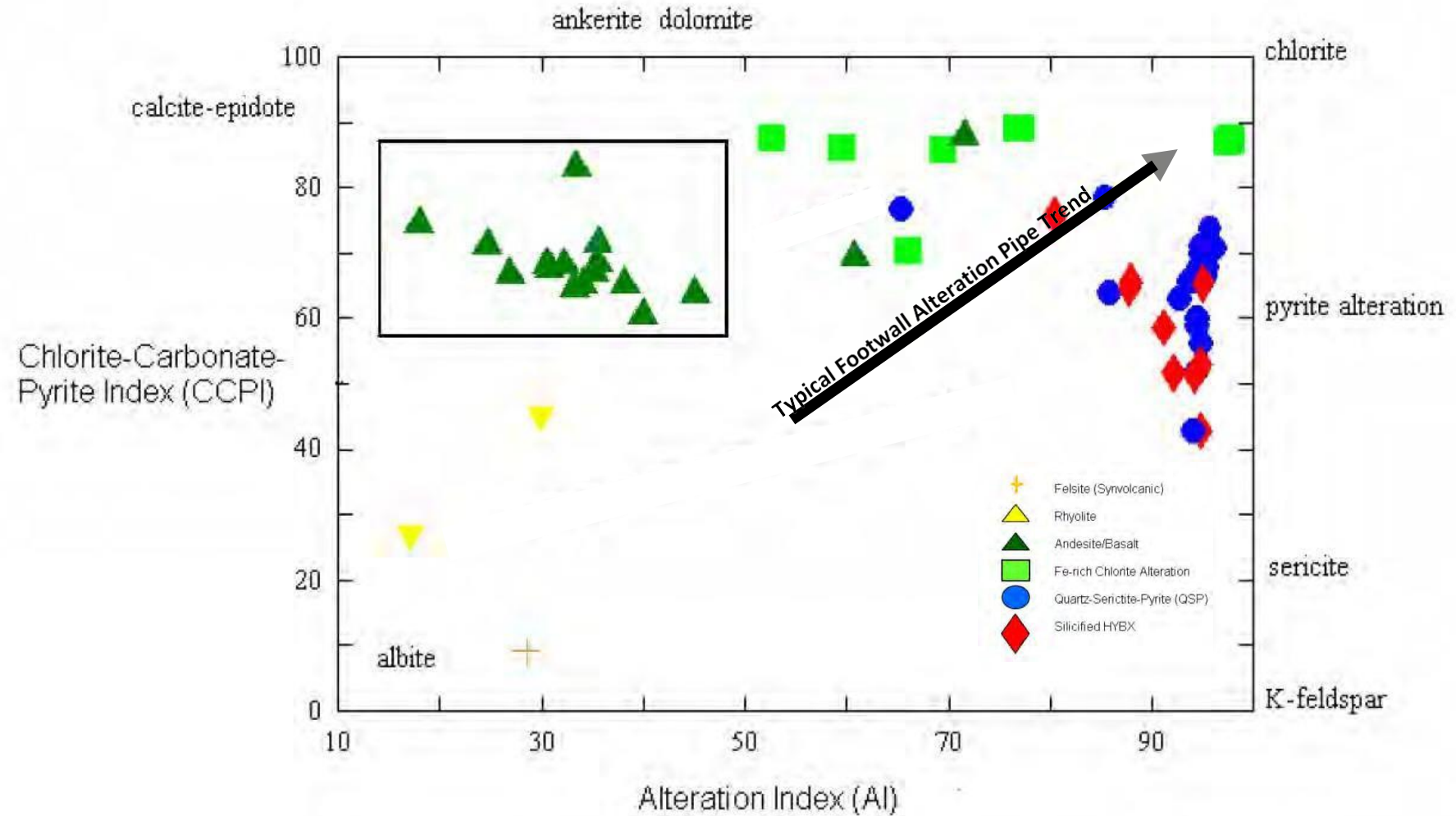
Alteration

- Stratabound alteration zones are commonly developed in the footwall and extend along strike for 2-6 km
- Common alteration zonation toward ore is:
- Ser/ Ser+Py/ Ser+Chl+Py/ Chl+Py/ Py+Qtz



ALTERATION BOX PLOT

- Useful in providing a vector to the centre of the alteration system
- Fe-Chlorite Alteration, QSP, and Silicified hydrothermal breccia alterations trend from unaltered equivalents in the west to intense alteration in the east
- Intense Na_2O and CaO depletion





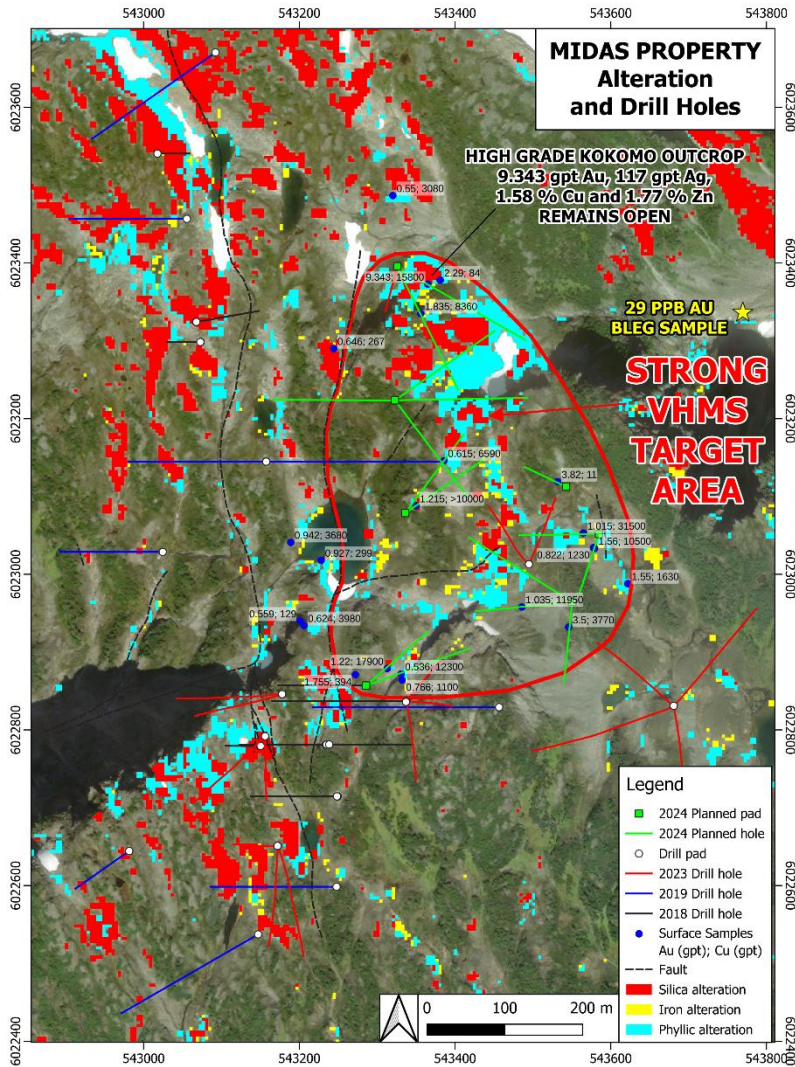
Surficial Geochemical Criteria for VHMS

- Most Deposits have strong Pb soil anomalies and Zn-Cu dispersed anomalies
- Gossan Trace Elements: Au, Te, As, Sb, Se, Sn, Bi, Cd, In, Tl, Hg, Ba
- Geochemical signature points to new target areas for drilling



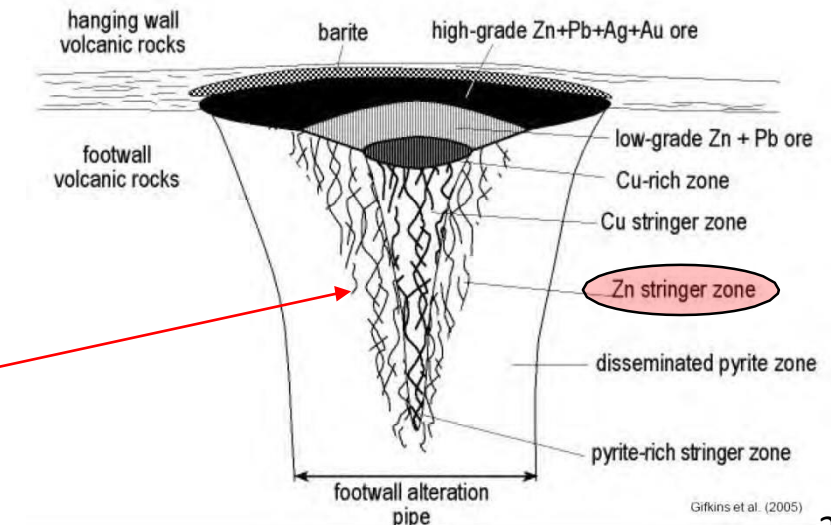
Midas King Solomon Zone

Kokomo
9.343 gpt Au, 117 gpt Ag,
1.58 % Cu and 1.77 % Zn



KING SOLOMON ZONE SUMMARY

- BCGS mapped an **18 x 10 km alteration zone** of intense gossan development and quartz-sericite-pyrite alteration.
 - King Solomon Zone (2.1 x 1.6 km)** falls within the larger alteration zone.
 - Mapped a series of bimodal volcanics and sediments that was subsequently mapped in detail by JUGR senior geologist Stephen Roach.
- The mapping, geochemistry, alteration studies, and geophysics, combined with the inaugural exploratory shallow drilling, was designed to expand the understanding of the controls on mineralization and the geological model.
- Drilling Highlights
 - MD-18-08 intersected **6.85 g/t Au over 9.0 m**
 - MD-23-34 intersected **1.56 gpt AuEq over 5 m**
 - MD-23-36 intersected **1.41 gpt AuEq over 3 m**



Possible source of this Mineralization is the intensely stringer zone of a VHMS systemsilicified
<https://juggernautexploration.com/>



2023 DRILL RESULTS

Pad ID	Hole ID		From (m)	To (m)	Interval (m)	Au (gpt)	Ag (gpt)	Cu (%)	Pb (%)	Zn (%)	AuEq (gpt)
Eskay 1	MD-23-34	Interval	12	20	8	0.18	1.70	0.09	0.01	0.53	0.54
		Interval	23	33	10	0.24	2.93	0.13	0.01	0.64	0.70
		Interval	35	57	22	0.22	2.73	0.20	0.02	0.38	0.68
		<i>Including</i>	<i>47</i>	<i>52</i>	<i>5</i>	<i>0.35</i>	<i>6.10</i>	<i>0.64</i>	<i>0.05</i>	<i>0.67</i>	<i>1.56</i>
Eskay 1	MD-23-35	Interval	6	26	20	0.18	1.46	0.11	0.01	0.47	0.54
		<i>Including</i>	<i>6</i>	<i>9</i>	<i>3</i>	<i>0.38</i>	<i>3.62</i>	<i>0.32</i>	<i>0.01</i>	<i>1.40</i>	<i>1.41</i>
		<i>Including</i>	<i>20</i>	<i>23</i>	<i>3</i>	<i>0.39</i>	<i>2.48</i>	<i>0.28</i>	<i>0.01</i>	<i>0.69</i>	<i>1.07</i>
Eskay 1	MD-23-36	Interval	1	33	32	0.16	1.69	0.04	0.01	0.14	0.29
		Interval	167	173	6	0.19	4.30	0.15	0.001	0.04	0.45
		<i>Including</i>	<i>172</i>	<i>173</i>	<i>1</i>	<i>0.79</i>	<i>16.60</i>	<i>0.58</i>	<i>0.001</i>	<i>0.01</i>	<i>1.76</i>
Kokomo 2	MD-23-46	Interval	95	96	1	1.30	8.92	0.74	0.001	0.01	2.40

2018 DRILL RESULTS

Drill Hole ID	From (m)	To (m)	Interval (m)	Au (g/t)	Ag (g/t)	Cu (%)	Pb (%)	Zn (%)	AuEq (g/t)*
MD-18-01¹	2.80	7.60	4.80	2.24	6.83	0.18	0.08	1.04	3.27
Including ¹	2.80	3.60	0.80	12.80	37.20	0.80	0.49	5.54	18.11
MD-18-08	35.0	44.0	9.0	6.85	1.52	0.07	0.03	0.09	7.04
Including	35.0	40.15	5.15	11.85	1.35	0.04	0.00	0.06	11.96
Including	36.0	37.0	1.0	60.4	5.30	0.06	0.00	0.14	60.64
MD-18-11	69.20	70.27	1.07	5.21	15.62	3.49	0.00	0.06	10.53
MD-18-16¹	1.50	36.85	35.35	0.21	0.18	0.08	0.02	0.32	0.55



MD-23-34



Pad: Eskay 1
 Drill Hole: MD-23-34
 35.00 - 57.00 m
**0.68 gpt AuEq over 22 m,
 incl. 1.56 gpt AuEq over 5 m.**

1.56 gpt AuEq OVER 5 m WITH ABUNDANT CHALCOPYRITE AND PYRITE



Pad ID	Hole ID		From (m)	To (m)	Interval (m)	Au (g/t)	Ag (g/t)	Cu (%)	Pb (%)	Zn (%)	AuEq (g/t)
Eskay 1	MD-23-34	Interval	12	20	8	0.18	1.70	0.09	0.01	0.53	0.54
		Interval	23	33	10	0.24	2.93	0.13	0.01	0.64	0.70
		Interval	35	57	22	0.22	2.73	0.20	0.02	0.38	0.68
		Including	47	52	5	0.35	6.10	0.64	0.05	0.67	1.56



MD-23-35



Pad: Eskay 1
 Drill Hole: MD-23-35
 6.00 - 26.00 m
 0.54 gpt AuEq over 20 m,
 incl. 1.41 gpt AuEq over 3 m
 and 1.07 gpt AuEq over 3 m.

1.41 gpt AuEq OVER 3 m WITH ABUNDANT CHALCOPYRITE AND PYRITE

Pad ID	Hole ID		From (m)	To (m)	Interval (m)	Au (g/t)	Ag (g/t)	Cu (%)	Pb (%)	Zn (%)	AuEq (g/t)
Eskay 1	MD-23-35	Interval	6	26	20	0.18	1.46	0.11	0.01	0.47	0.54
		Including	6	9	3	0.38	3.62	0.32	0.01	1.40	1.41
		Including	20	23	3	0.39	2.48	0.28	0.01	0.69	1.07





MD-23-36

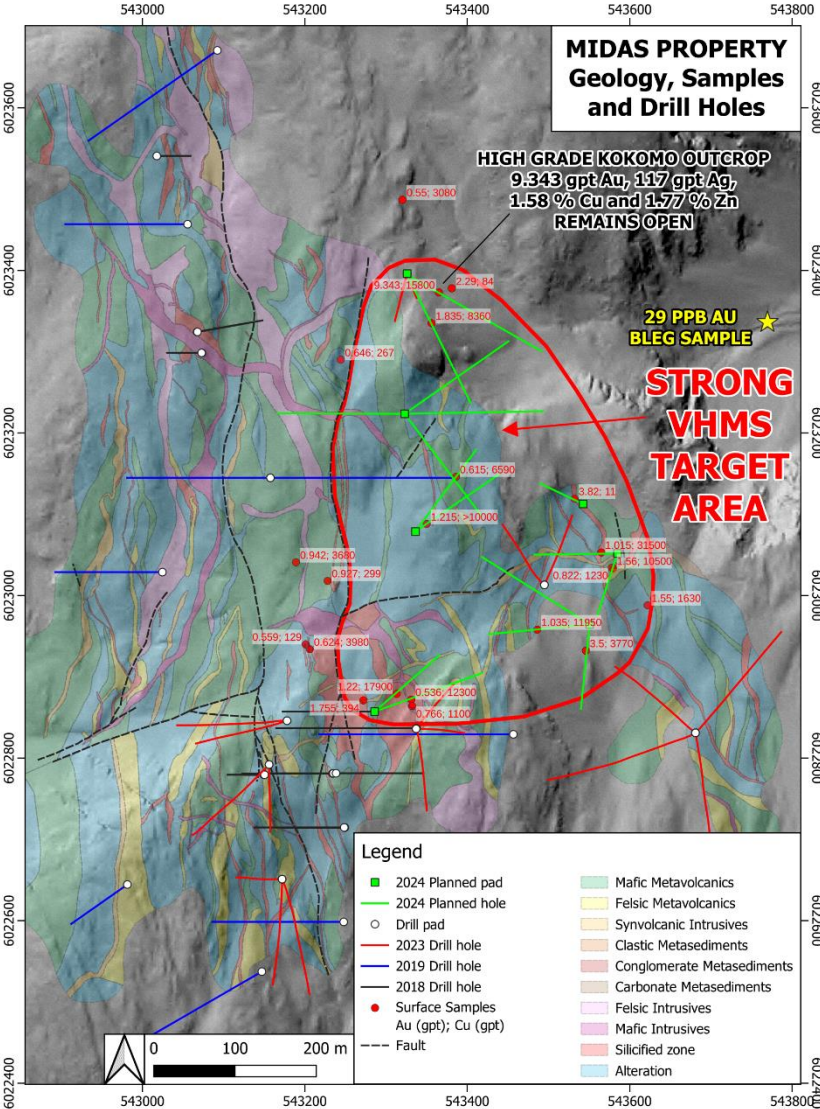
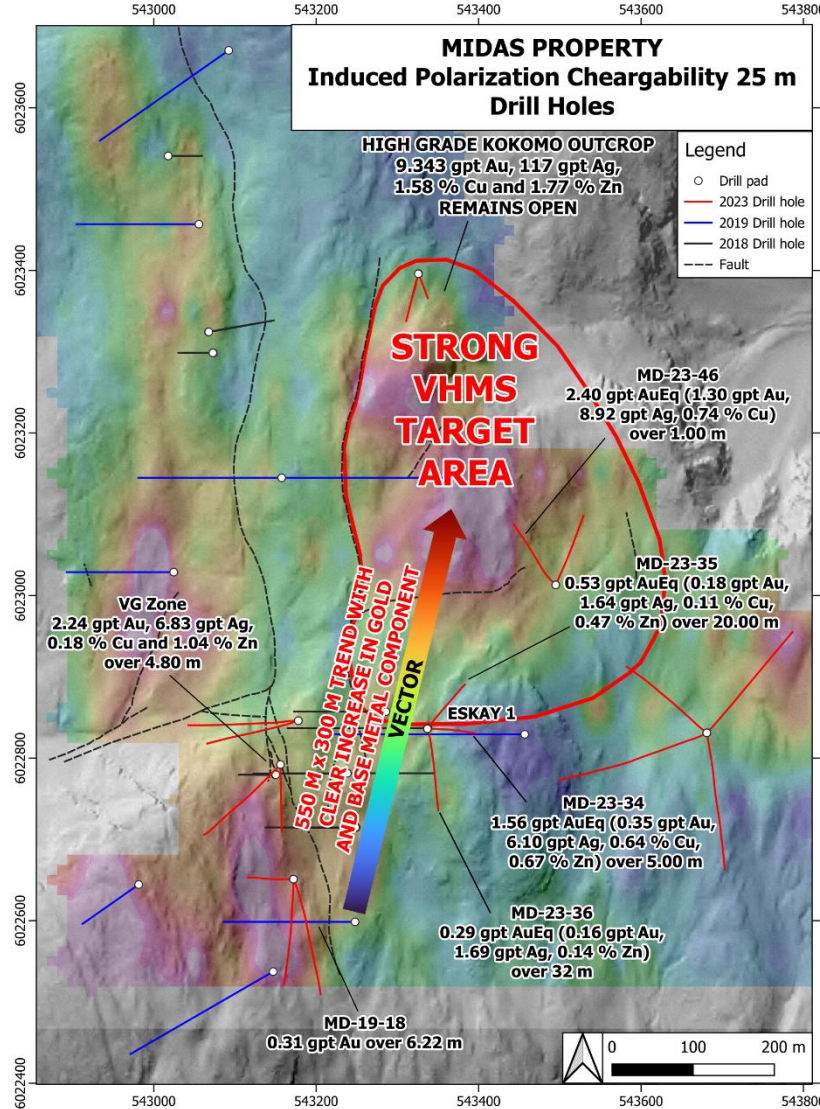
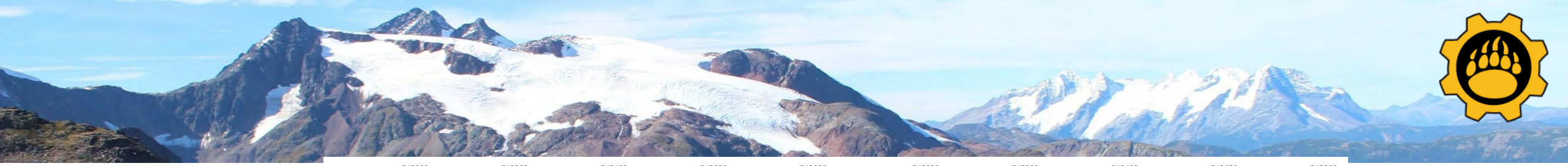


**Pad: Eskay 1
 Drill Hole: MD-23-36
 167.00 - 173.00 m
 0.45 gpt AuEq over 6 m,
 incl. 1.76 gpt AuEq over 1 m.**

1.76 gpt AuEq OVER 1 m WITH ABUNDANT CHALCOPYRITE AND PYRITE

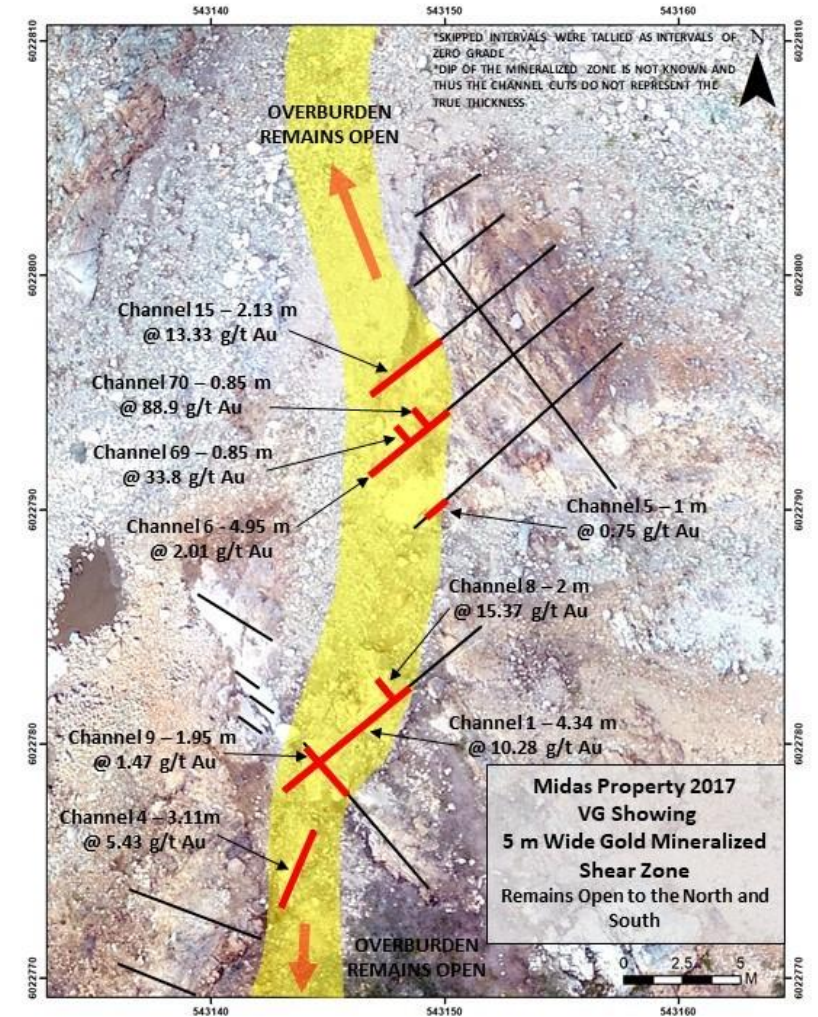
Pad ID	Hole ID		From (m)	To (m)	Interval (m)	Au (g/t)	Ag (g/t)	Cu (%)	Pb (%)	Zn (%)	AuEq (g/t)
Eskay 1	MD-23-36	Interval	1	33	32	0.16	1.69	0.04	0.01	0.14	0.29
		Interval	167	173	6	0.19	4.30	0.15	0.001	0.04	0.45
		Including	172	173	1	0.79	16.60	0.58	0.001	0.01	1.76







VG Zone – High-Grade Samples





Kokomo Target

- Multiple high-grade gold grab, chips and channel samples including Kokomo showing where a 1 m chip sample assayed 9.343 gpt Au, 117 gpt Ag, 1.58 % Cu and 1.77 % Zn
- Eight (8) Bulk Leach Extractable Gold (BLEG) samples returned high-grade gold ranging from 24.31 ppb Au to 107.35 ppb Au within a 650 meters by 200 meters area located immediately to the southeast draining the Kokomo showing and surrounding area along strike
- Relatively shallow Induced Polarization (IP) chargeability and resistivity anomalies
- Alteration zones extracted from Worldview 3 satellite spectral data show a strong silica, iron and phyllic alteration (quartz-sericite-pyrite) signature coinciding with the Kokomo showing

JUGGERNAUT
EXPLORATION LTD. TSX.V : JUGR

1 m chip - Y606015
117gpt Ag, 132gpt Pb,
1.585% Cu, 1.77% Zn
9.343gpt Au
REMAINS OPEN

1 m Chip Sample

**NEW OUTCROPPING
VHMS TARGET**

"KOKOMO SHOWING"

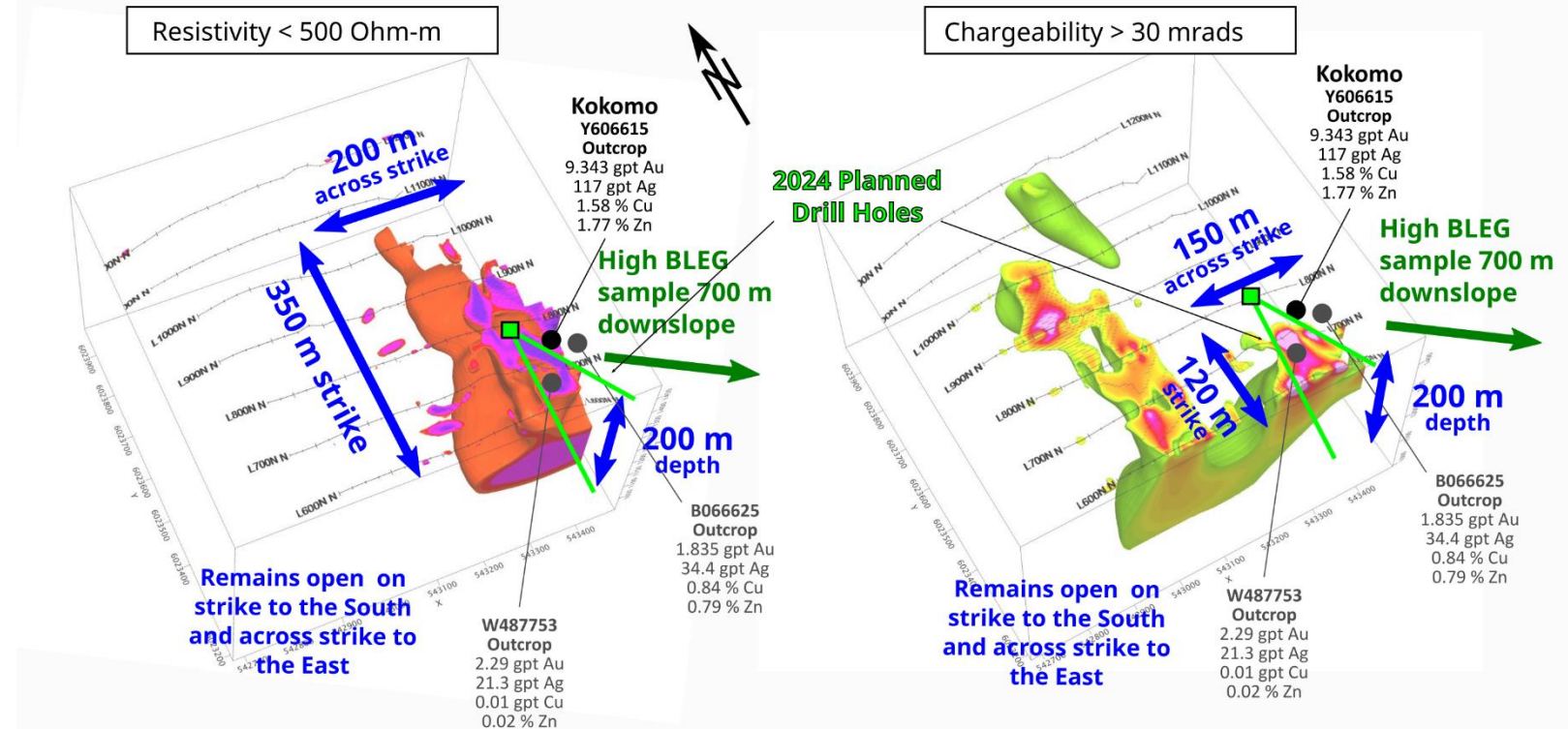


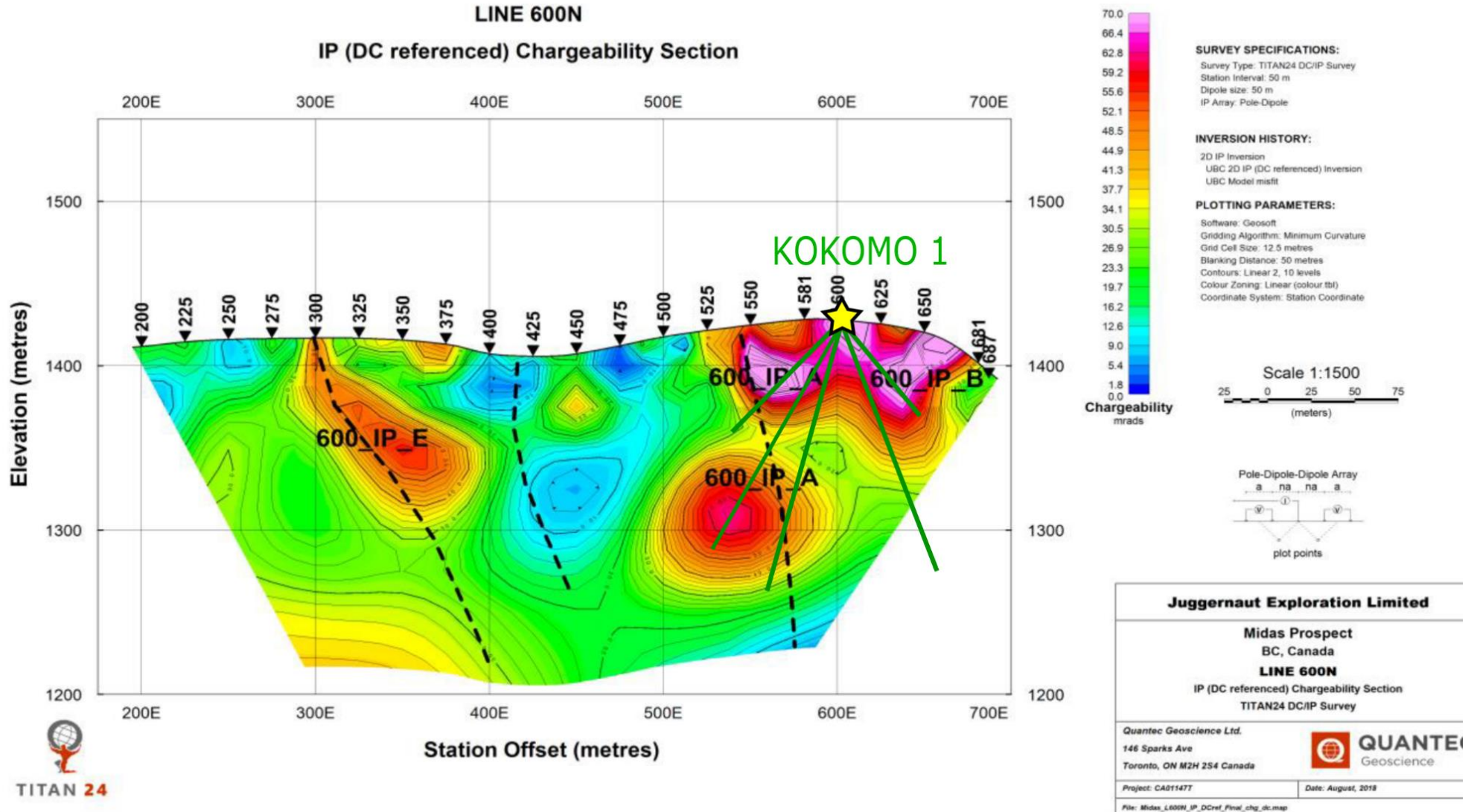
3D IP inversion

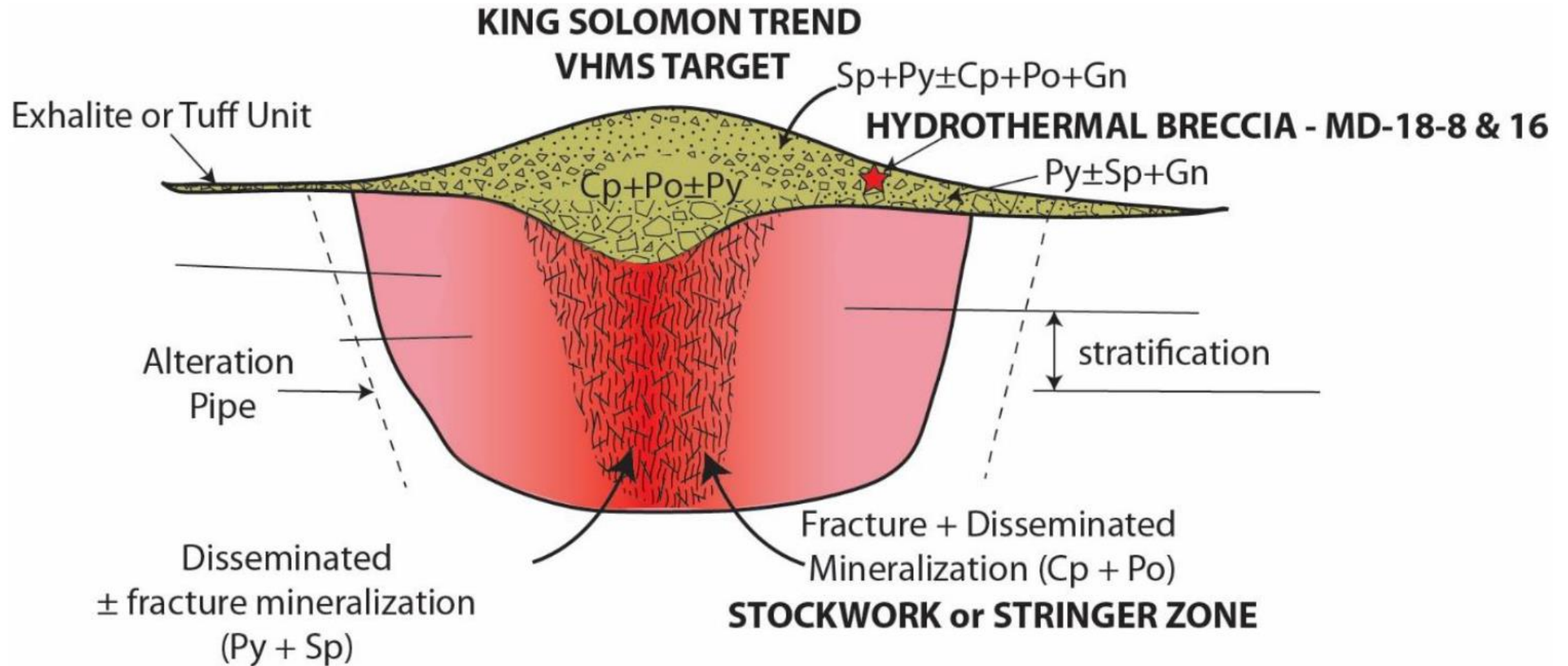
- 350 m by 200 m resistivity anomaly (potentially highlighting Zn mineralization)
- 120 m by 150 m chargeability anomaly from surface to 200 m depth (potentially highlighting Au, Cu mineralization)
- Both anomalies remain open to the South and East
- Conducive for semi-massive to massive sulphides like those confirmed on surface at Kokomo

3D Inversion IP Model

Kokomo high-grade Eskay-style VHMS discovery outcrop drill ready



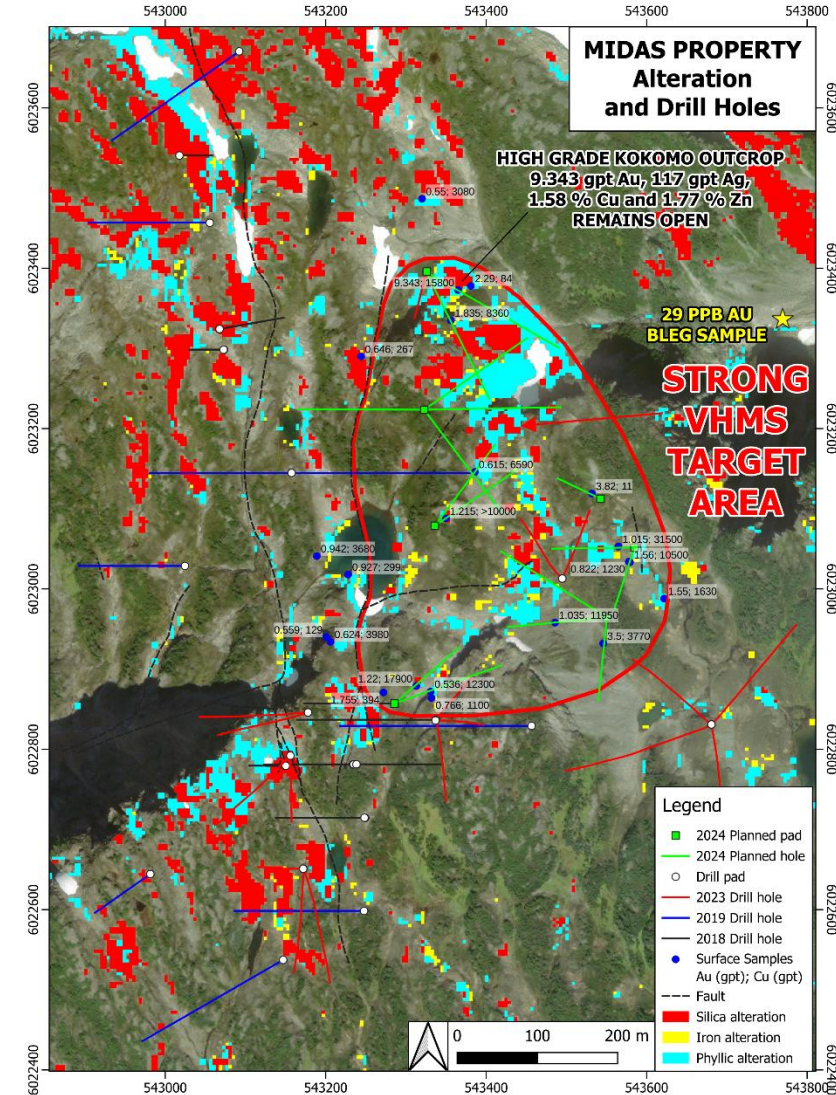
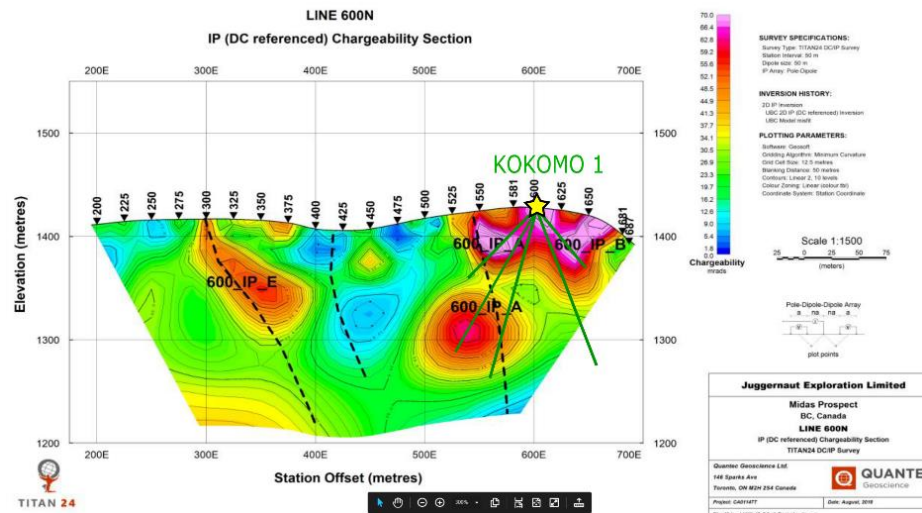






2024 Program

- Drilling at Kokomo
 - 2000 meter program (6 pads, 15 holes)
 - Drilling based on surface geochemistry, BLEG, alteration, IP chargeability and resistivity anomalies





Midas Summary – Key VHMS Indicators

Stratigraphy

- Andesite and Rhyolites
- Mississippian in age



Alteration

- Fe-rich Chlorite
- Quartz-sericite-pyrite
- Silicification



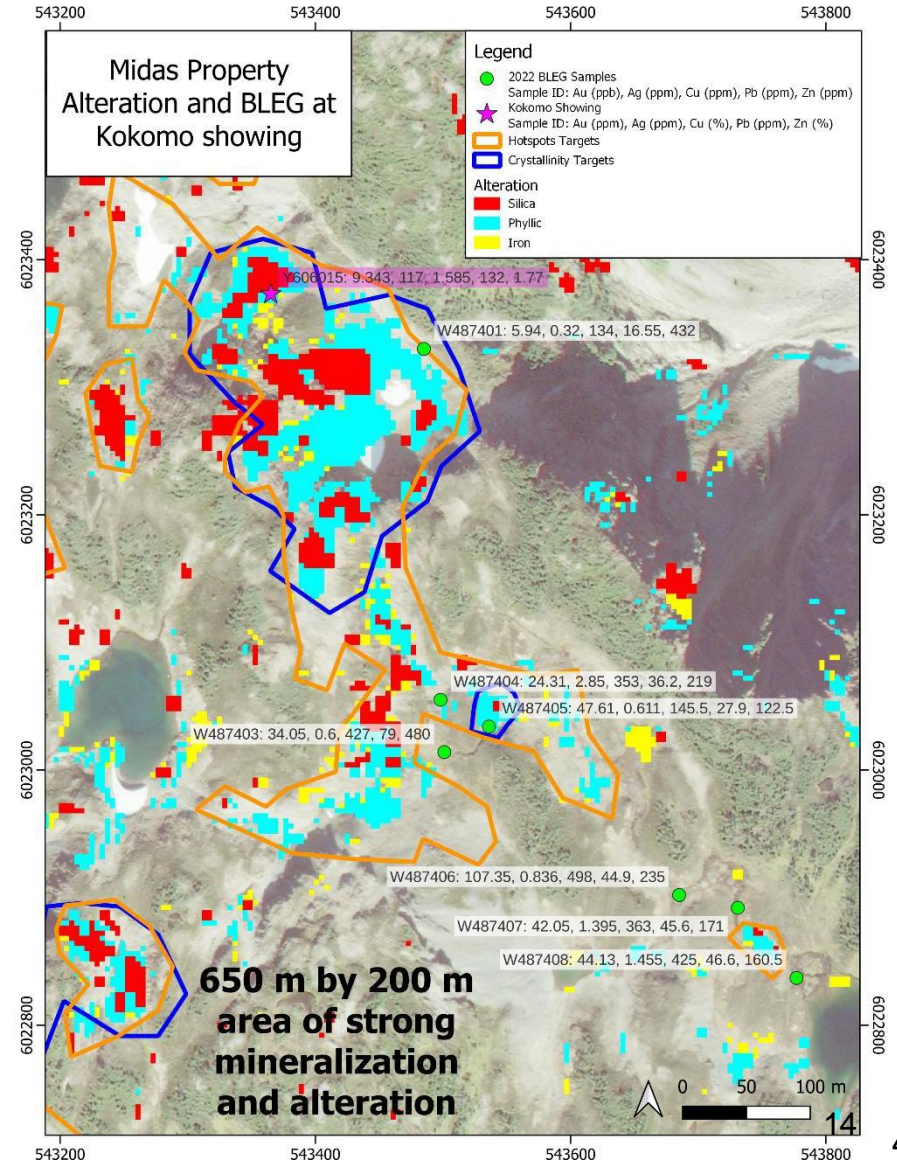
Geophysics

- Untested chargeability and resistivity anomalies



Geochemistry

- Widespread Zn signature with secondary Au, Ag, Pb, Cu
- Trace element signature

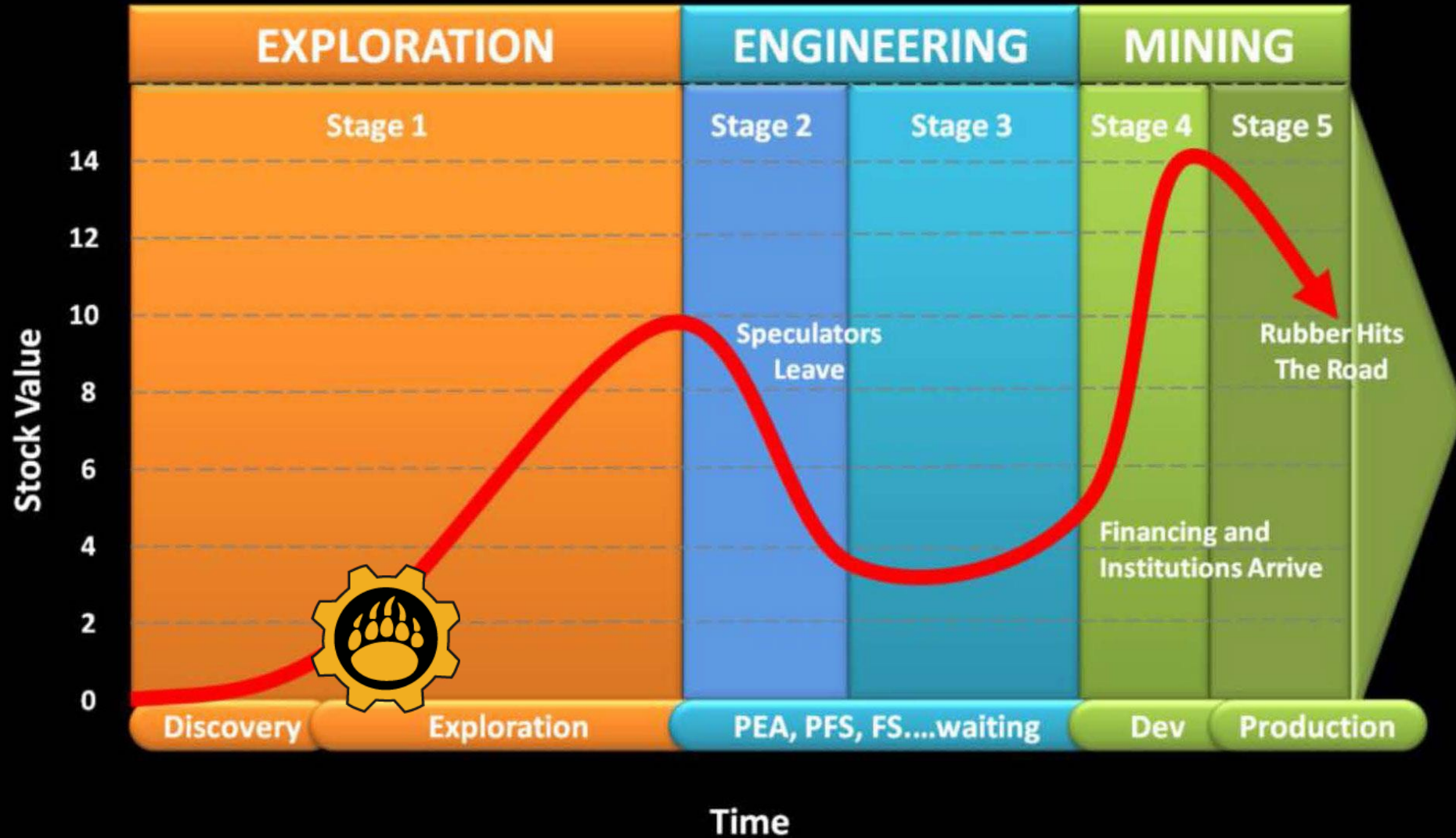




Midas Property Summary, the next Eskay Creek?

- Based on the data we have now Juggernauts Exploration Team believe some of the best targets remain untested. **Eskay Creek** was discovered in 1988. The 109th drilling hole of Stikine Resources and Calpine Resources' joint venture hit the jackpot with a content of 27.2 g/t Au (gold) and 30.2 g/t Ag (silver) on 208 m. This mine had Canada's richest content with Au 49 g/t, Ag 2406 g/t, lead 3.2% and zinc 5.2%. Obviously, Stikine's stock price skyrocketed, going **from \$0.30 to \$64 within a year before the company was bought by a major player.**
- Joanne Nelson from the BCGS stated in her report on Juggernauts website ([M. McKeown, J. Nelson and R. Friedman](#)) located on page 113 that the sub showing and Gazelle demonstrates Mineralization indicative of a VHMS deposit that has been discovered in an intensely- altered body within the Mt Attree volcanics.
- Results to date through drilling have substantiated this with the holes closest to East Creek fault MD-19-21 displayed textures consistent with VHMS including a 0.5m interval of semi massive to massive pyrite from 47 to 47.5m containing 0.213 g/t Au with 6.03 g/t Ag and 0.368% Cu hosted within strongly sericite to silica altered rock. Several targets remain untested on this project. Also the most easterly collared drill hole in 2018 hole MD-18-16 intersected 35 m Au, Ag, Cu and Zn mineralization pointing to the close-by East Creek fault (Gazelle showing area) as having good VHMS potential.
- The Kokomo showing has all the ingredients for a VHMS system, including mineralization (Cu, Zn, Au) and textures (semi-massive to massive sulphides). A 1 m chip sample assayed 9.343 gpt Au, 117 gpt Ag, 1.58 % Cu and 1.77 % Zn hosted within strongly altered silicified rock. In addition, strong IP chargeability and resistivity anomalies remain to be tested at depth.

LASSONDE CURVE – JUNIOR MINER LIFE CYCLE



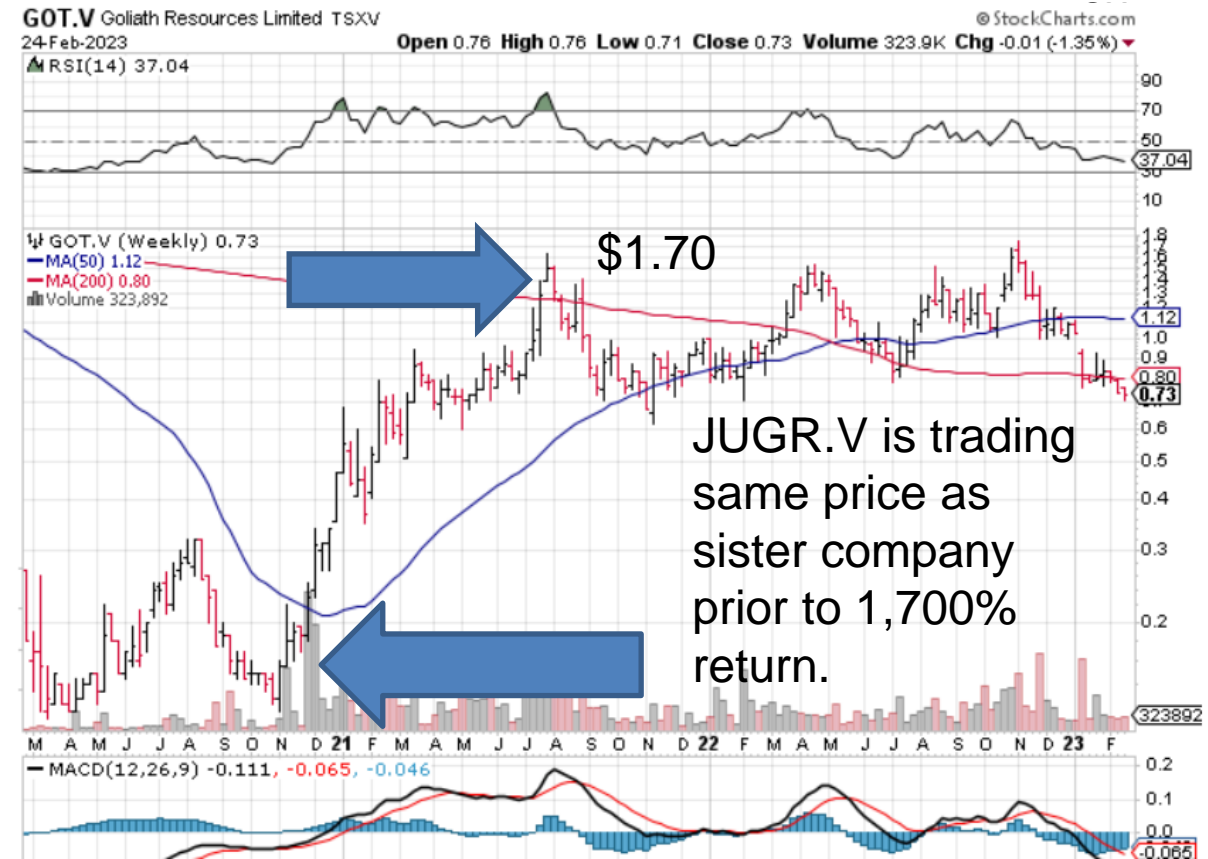


The Opportunity, Why Buy ?

Juggernaut's sister company Goliath generated 1,700% for investors in 9 months. Participants in their \$.10 placement with a full warrant at \$.15 received a 25 Bagger.

Juggernaut has only 76,044,526 share outstanding.
Juggernaut has a MCAP 9M.

Juggernaut has Crescat Capital / Quinton Hennigh as 19.97% shareholders & technical support.



JUGR.V is trading same price as sister company prior to 1,700% return.



SHARE STRUCTURE

Securities	Number	Weighted-Average Exercised Price	Expiry Date
Common shares issued and outstanding	127,381,066	-	-
Share purchase warrants	91,797,748	\$0.16	Mar. 10, 2025 - Dec. 20, 2028
Share purchase options	12,442,000	\$0.19	Jan. 9, 2025 - Jun. 13, 2029
Fully diluted share capital	231,620,814	-	-

As of June 19, 2024

CAPITAL STRUCTURE

- No Debt
- Management, insiders, and accredited investors ~ 70%
- Strong support from institutions
- Crescat Capital 19.70%



TSX-V: JUGR
FSE: 4JE
OTCQB: JUGRF

For additional information on any of these properties please contact:

Dan Stuart

CEO and President, Director

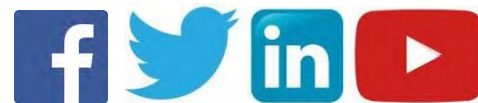
Dan@juggernautexploration.com

Juggernaut Exploration Ltd

300 – 1055 West Hastings Street,
Vancouver, BC V6E 2E9

Telephone: 604-559-8028

Fax: 604-684-6024





ADDITIONAL INFORMATION

Rein Turna, P. Geo. is the qualified person as defined by National Instrument 43-101, for Juggernaut Exploration Ltd. projects, and supervised the preparation of, and has reviewed and approved, the technical information in this release. Further information regarding Juggernaut's Midas and Bingo properties can be sourced online at www.juggernautexploration.com or by contacting Dan Stuart at 604-559-8028.

All rock, channel, and talus fine samples were crushed and pulverized at ALS Canada Ltd.'s lab in North Vancouver, Terrace, BC, or Reno, Nevada. ALS is either Certified to ISO 9001:2008 or Accredited to ISO 17025:2005 in all of its locations. The resulting sample pulps were analyzed for gold by fire assay in Reno, Nevada or in Vancouver, BC. The pulps were also assayed using multi-element aqua regia digestion at ALS Canada Ltd.'s lab in Vancouver, BC. The silt samples were sieved and assayed at ALS Canada Ltd.'s lab in Vancouver, BC. The coarse reject portions of the rock, channel and talus fine samples, as well as the pulps, were shipped to J2 Syndicate's storage facility in Terrace, BC. The silt samples were disposed of after analysis. All samples were analyzed using ALS Canada Ltd.'s assay procedure ME-ICP41, a 1:1:1 aqua regia digestion with inductively-coupled plasma atomic emission spectrometry (ICP-AES) or inductively-coupled plasma mass spectrometry (ICP-MS) finish for 35 elements as well as the Au-AA24 lead-collection fire assay fusion procedure with atomic absorption spectroscopy (AAS) finish. Any results greater than 100 ppm for silver or 10,000 ppm copper, lead and zinc were additionally assayed using ALS's OG46 method particular to each element. This method used an HNO₃-HCl digestion followed by ICP-AES (or titrimetric and gravimetric analysis). Gold values of greater than 10 ppm Au were assayed by the Au-GRA22 method which includes a fire-assay fusion procedure with a gravimetric finish. Blanks and duplicates QA/QC samples were inserted into channels sample laboratory batches. Additionally, and 10% sub-sample of pulp and reject material was sent to Activation Laboratories in Ancaster Ontario, for check-analysis.

The reader is cautioned that grab samples are spot samples which are typically, but not exclusively, constrained to mineralization. Grab samples are selective in nature and collected to determine the presence or absence of mineralization and are not intended to be representative of the material sampled.