

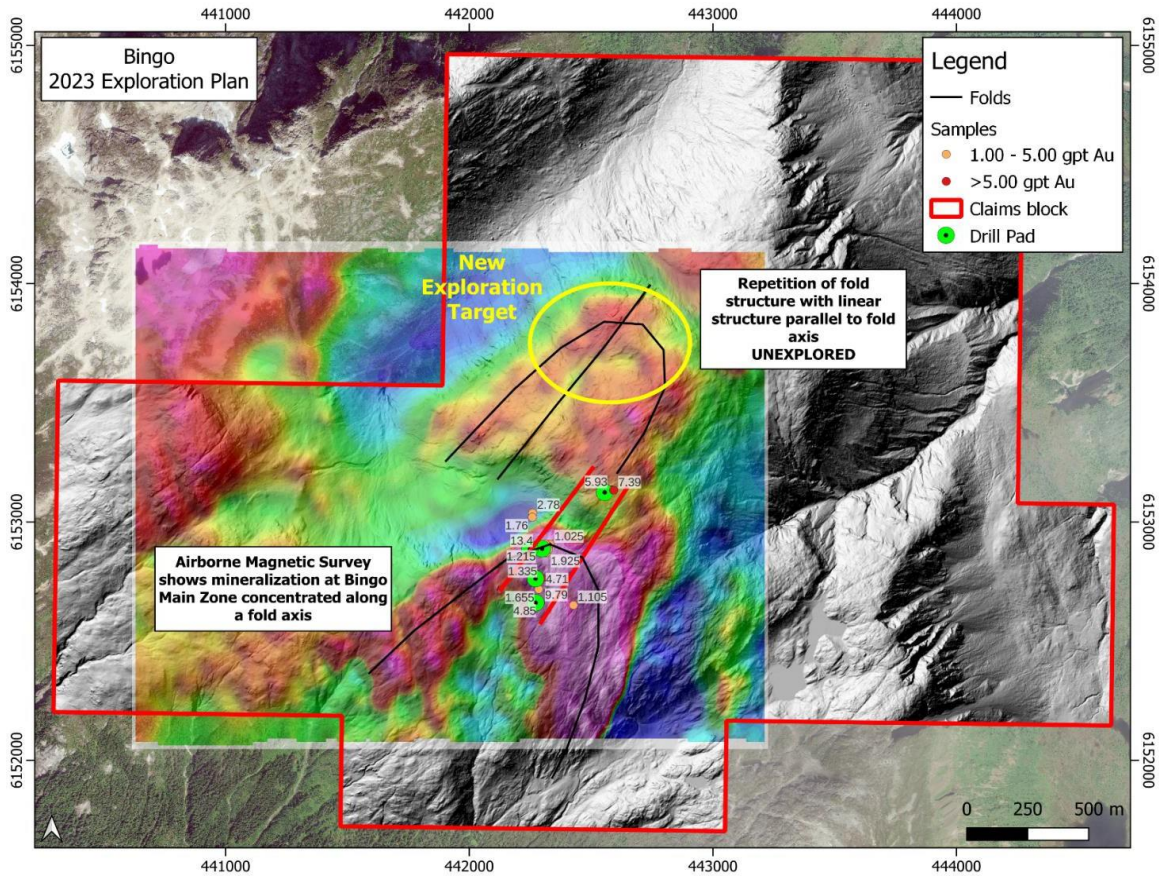


## JUGGERNAUT- FAST FACTS - THE OPPORTUNITY

Three 100 % controlled drill ready multiple high-grade discoveries in world class terrane in BC - Three maiden drill programs of ~ 6000 meters coming for 2023 season

**BINGO PROPERTY LOCATED IN THE GOLDEN TRIANGLE IS 100% CONTROLLED - FULLY PERMITTED AND DRILL READY** - The Bingo Main zone measures 550 meters by 175 meters along the axial plane of a fold hinge and remains open with high-grade gold from surface samples that assayed up to 9.79 gpt Au. Potential for another sister hinge zone in close proximity to the North as strongly indicated by both lidar and geophysics that will be tested in 2023. Strong similarities to Goliath Resources's Surebet Project, including same mineralogy, lithology, textures and structures. Excellent proximity to infrastructure, seasoned experience specialized team with a proven track record of success.

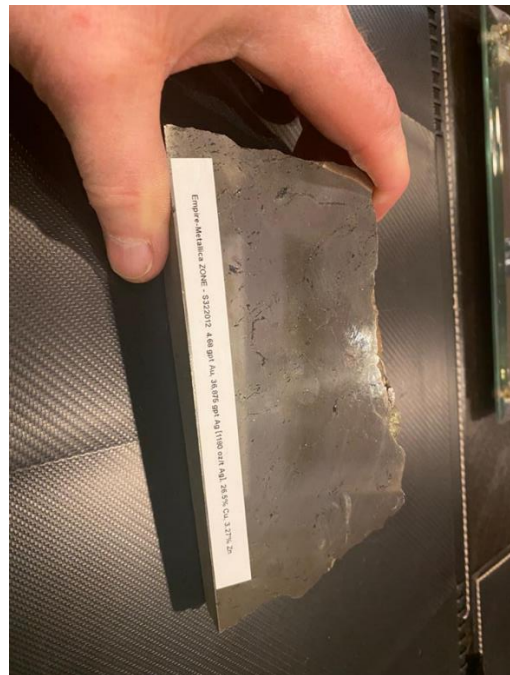
- ✓ The Bingo Main zone has been expanded from 320 meters by 175 meters to 550 meters by 175 m and remains open with high-grade gold samples that assayed up to 9.79 gpt Au
- ✓ Bingo is located in the Eskay Rift in an evolving gold district in a world-class geologic setting within the Golden Triangle of British Columbia, host to several multi-million ounce gold deposits
- ✓ Bingo contains the same world-class geological units as Goliath Resource's Surebet discovery, including Hazelton Volcanics and related sediments and intrusives
- ✓ Gold mineralization in outcrop, stream sediment geochemistry, ground magnetic survey, soil sampling and other lines of evidence confirm strong gold-mineralization on the property
- ✓ Mineralization characterized by pyrite, chalcopyrite, galena and pyrrhotite
- ✓ Gold-rich fluids intruded and altered the host rock indicating a shear zone
- ✓ The Bingo property is surrounded by a number of known deposits, including Anyox, Surebet, Dolly Varden, Porter Idaho, Premier, and more
- ✓ Infrastructure includes direct access to tide water in close proximity to road s and high-tension power



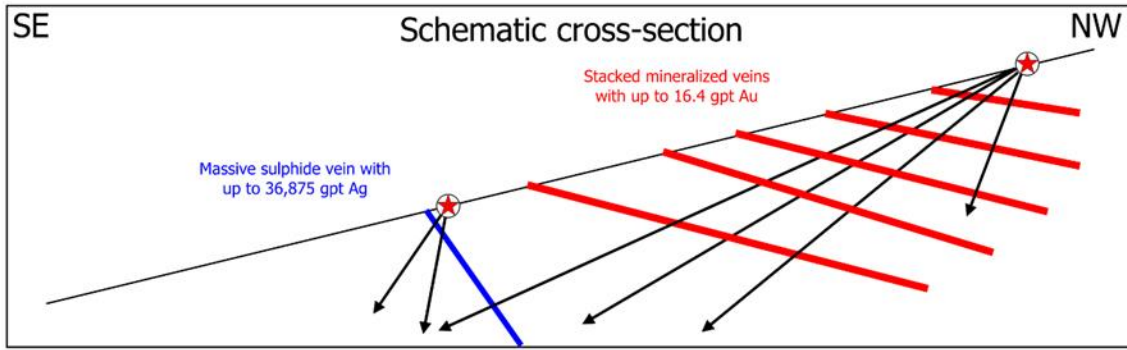
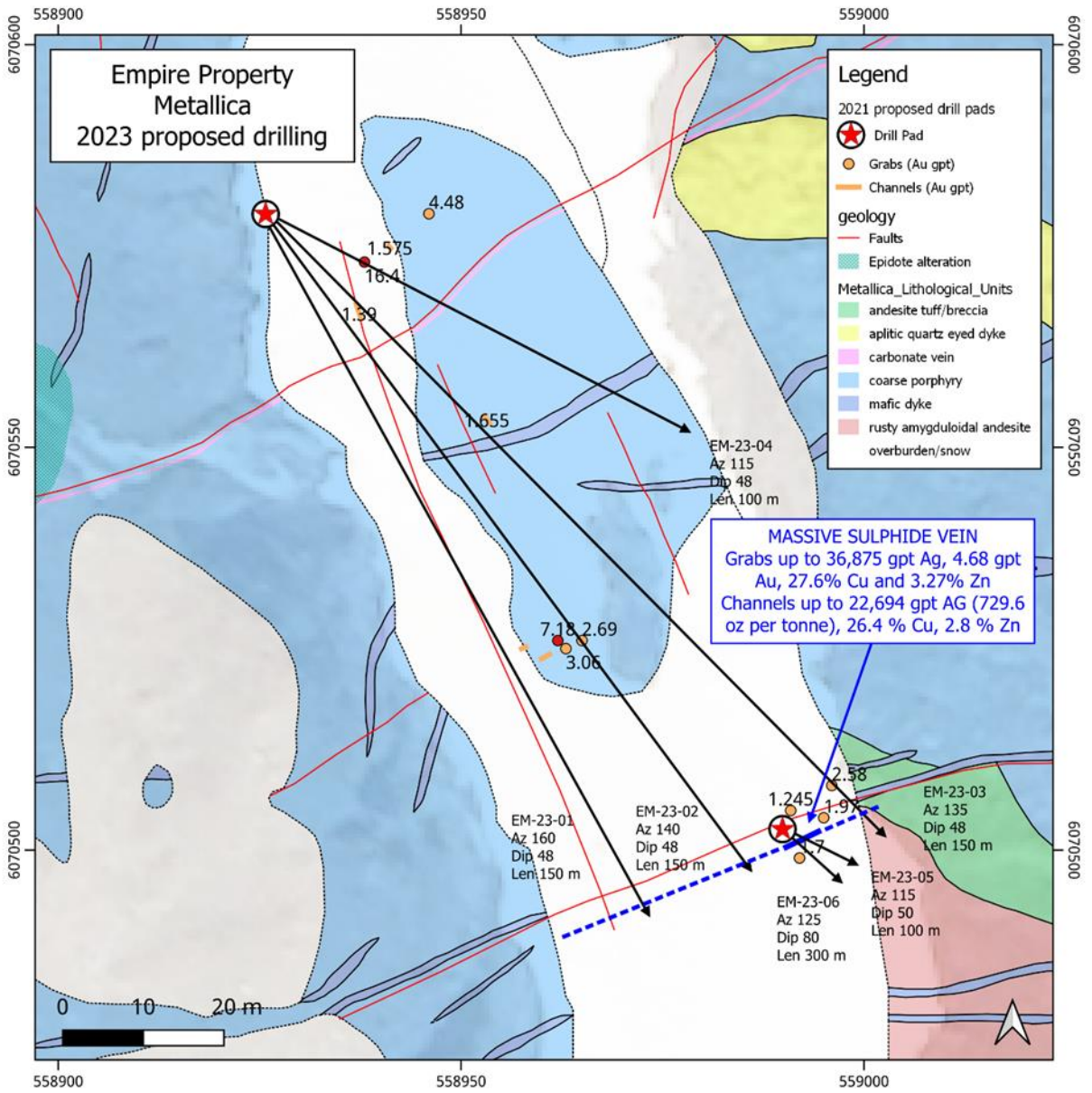
**EMPIRE PROPERTY 100 % CONTROLLED – HIGH GRADE METALLICA ZONE – FULLY PERMITTED AND DRILL READY** - Grab samples from an outcropping massive sulphide vein up to 30 cm wide assayed up to **36,875 gpt Ag (1180 ounces per tonne silver)**, 4.68 gpt Au, 27.6% Cu and 3.27% Zn. **(This is one of the highest silver samples collected from outcrop in Canadian history)**. Channel samples from the massive sulphide vein assayed 22,694 gpt Ag (729.6 oz per tonne), 26.4 % Cu, 2.8 % Zn. The vein extends for 40 meters in an east-west direction indicating a large feeder system at depth that remains open and is drill ready. Five separate gently dipping veins assayed between 1.00 and 16.4 gpt Au, and up to 2470 gpt Ag, 15.45% Cu and 1.58% Zn. These veins are up to 30 cm wide, contain quartz + Fe-carbonate ± covellite ± sphalerite and are arranged in a traceable set for over 50 meters across strike. In close proximity potassic alteration and porphyry textures seen on surface are believed to be related to a subtle magnetic high, indicating a porphyry core feeder at depth. Excellent proximity to infrastructure, including highway, railway, high-tension power and the town of Terrace, BC.



*W503059 - 662 oz/t Ag, 26.4 % Cu and 2.8 % Zn  
over 0.2 m*

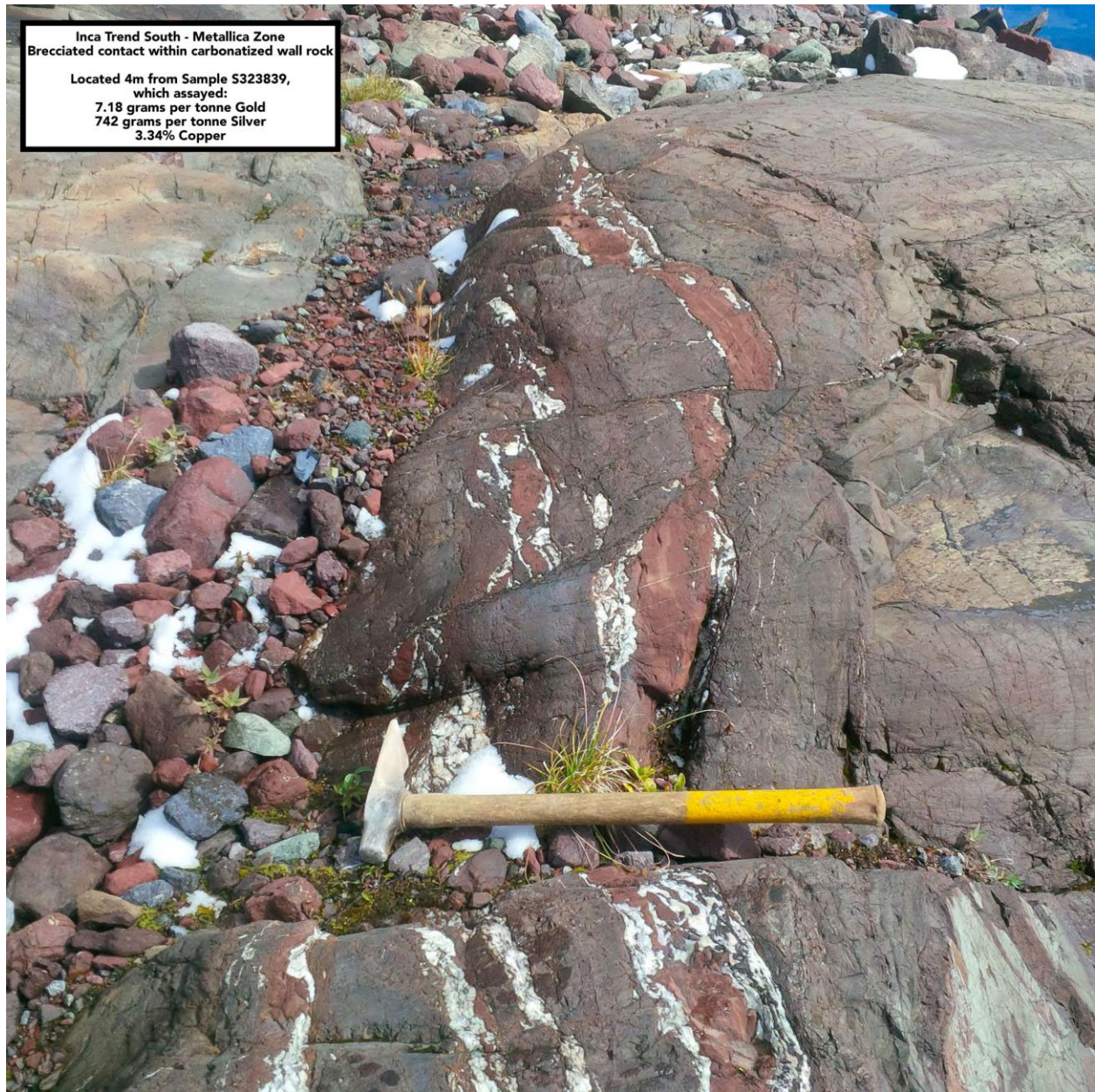


*S322012 - 4.8 gpt Au, 36,875 gpt Ag (1180 oz/t),  
26.5 % Cu and 3.27 % Zn*



Sample Site S322027  
Inca Trend Central  
Potassic alteration of wall rock with  
mineralized fractures and veining.  
102 grams per tonne Silver  
0.35% Copper



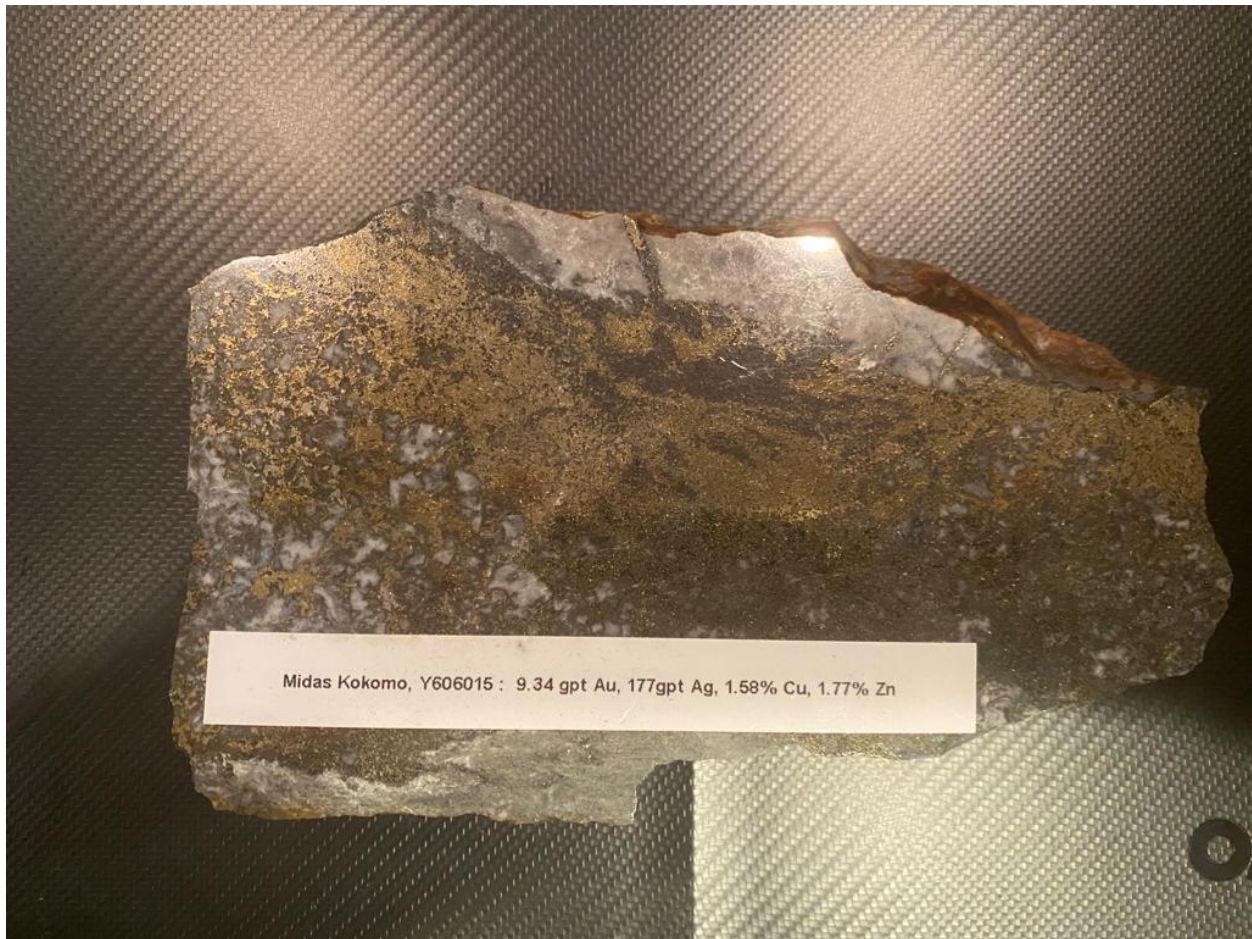


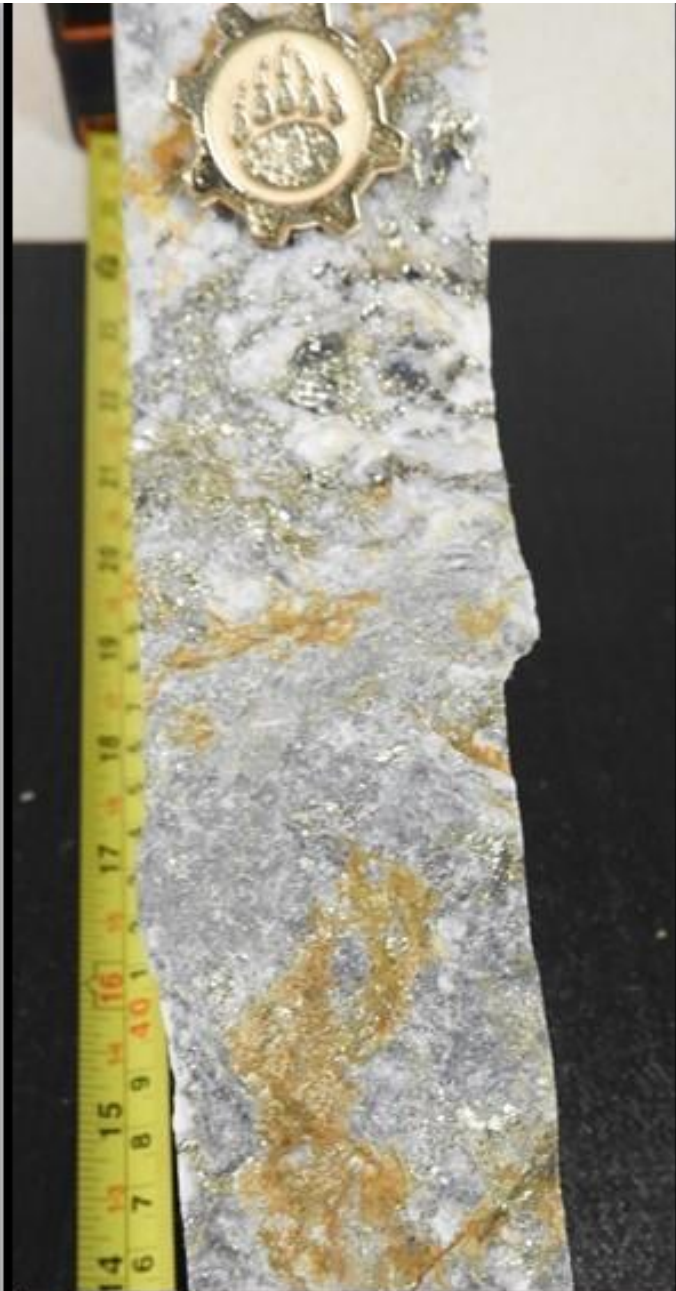
**Link to Empire – Metallica video**

<https://m.youtube.com/watch?v=OximcKmmBlo>

**MIDAS PROPERTY 100 % CONTROLLED – ESKAY-STYLE VHMS TARGET - FULLY PERMITTED AND DRILL READY** - Excellent proximity to infrastructure, including highway, railway, high-tension power and the town of Terrace, BC.

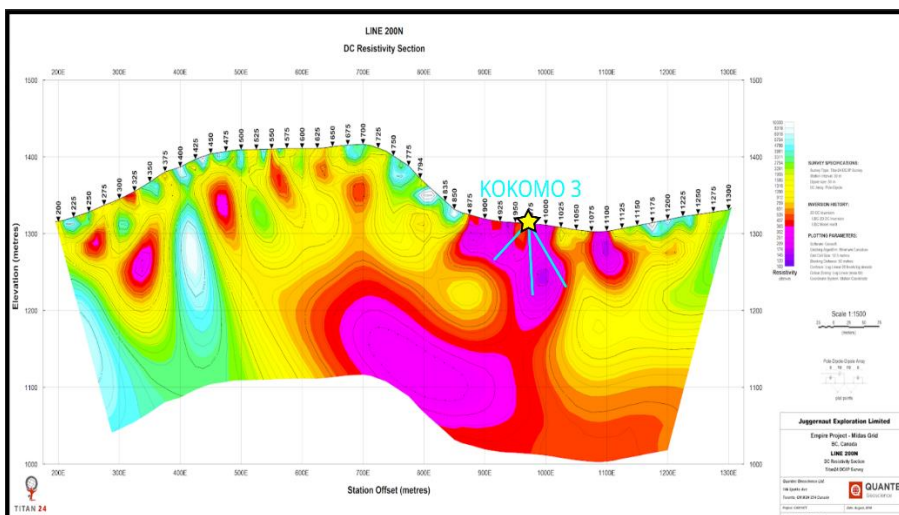
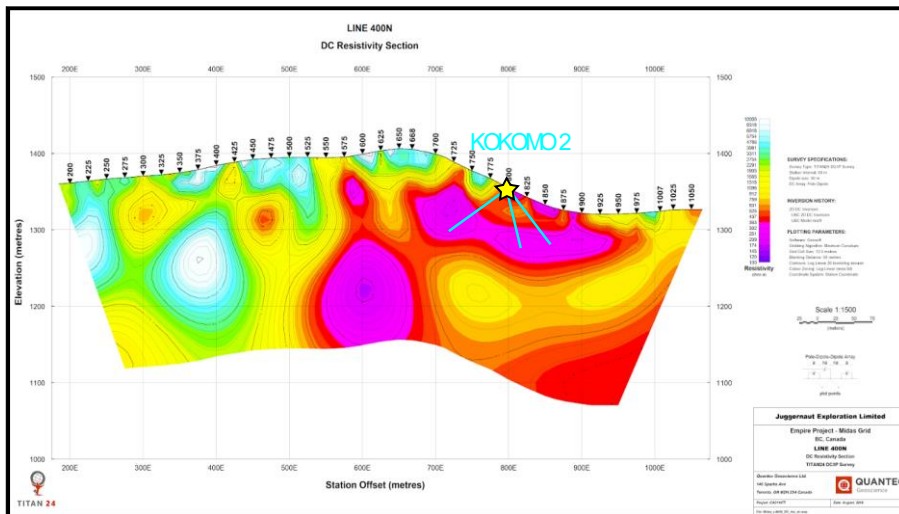
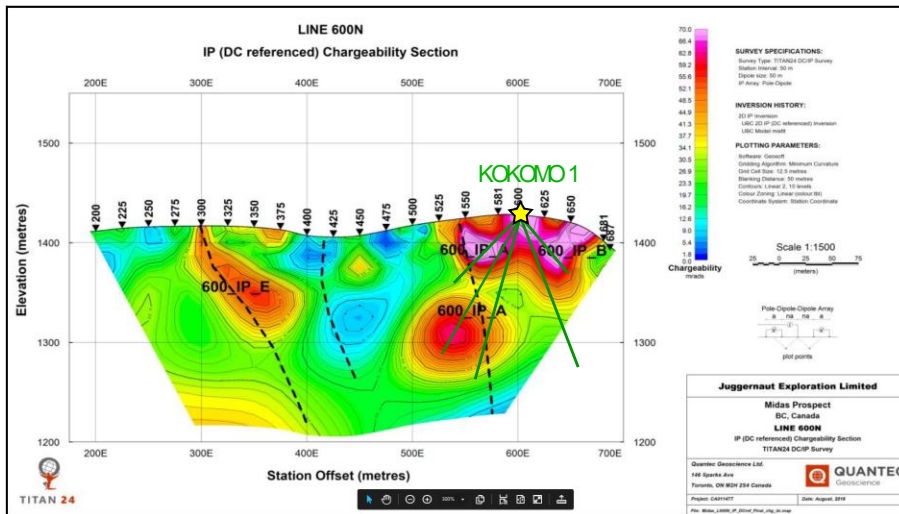
**Kokomo VHMS target – drill ready new discovery** - Multiple high-grade gold grab, chips and channel samples were collected from the Kokomo 1 VHMS target where a 1.00 m chip sample assayed 9.343 gpt Au, 117 gpt Ag, 1.58 % Cu and 1.77 % Zn and is drill ready. Relatively shallow Induced Polarization (IP) chargeability and resistivity anomaly extends under the Kokomo showing for 120 meters by 150 meters and remains open to the South and East on trend, conducive for a buried VHMS containing semi-massive to massive sulphides at depth. Kokomo 1, 2 and 3 targets are associated with elevated surface geochemistry containing gold, silver, copper and zinc in both BLEGS and outcrop with strong IP targets below at depth and along strike for 1 km and remain open.



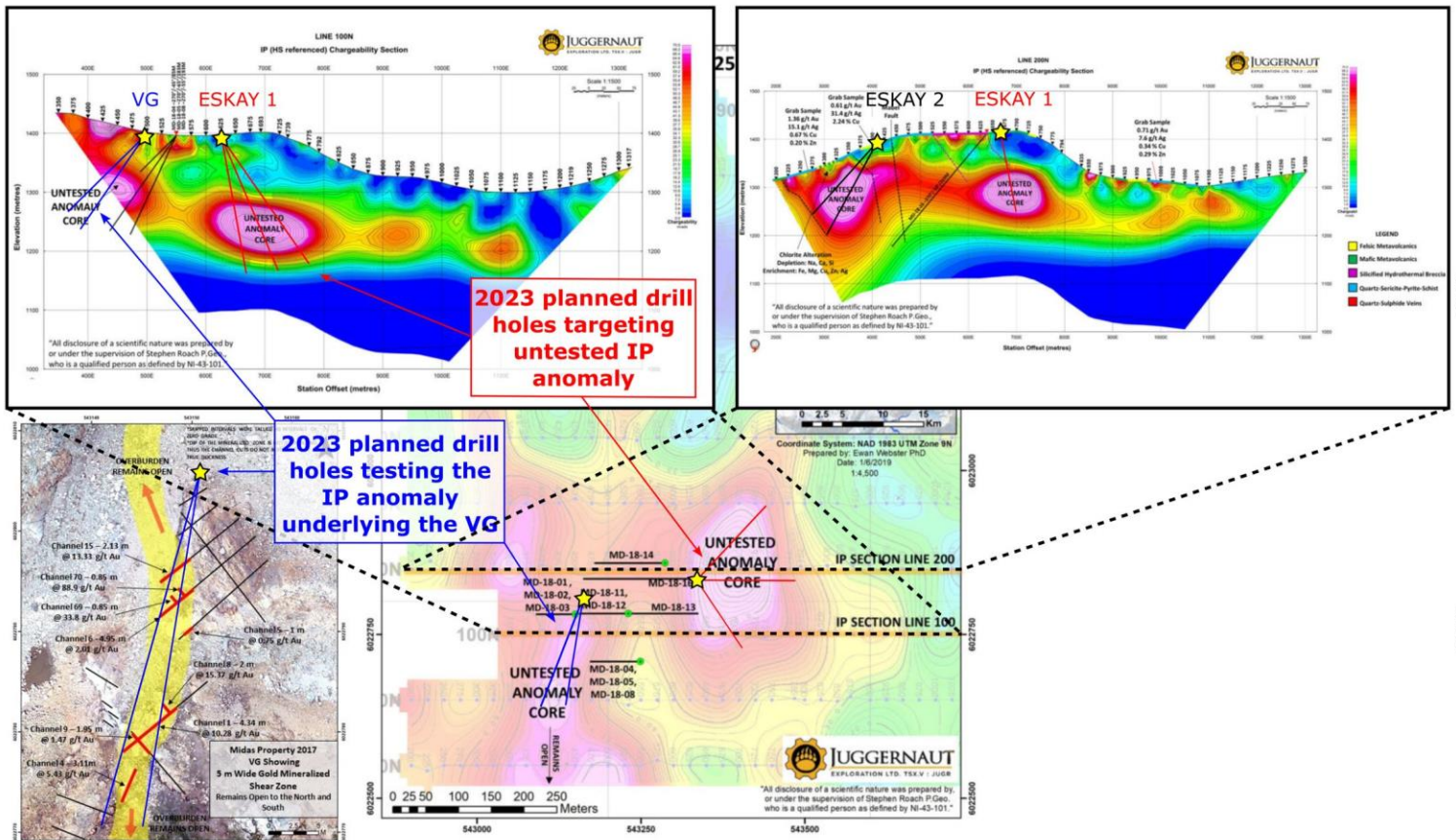


**Midas Property 2017**  
**King Solomon Zone**  
**VG Showing**  
Channel 1 - W489047-W486162  
**4.34 m of 10.8 gpt gold**  
22.46 gpt Silver  
0.9 % Copper  
(including 0.49 m of 24.4 gpt gold – Sample W486154)





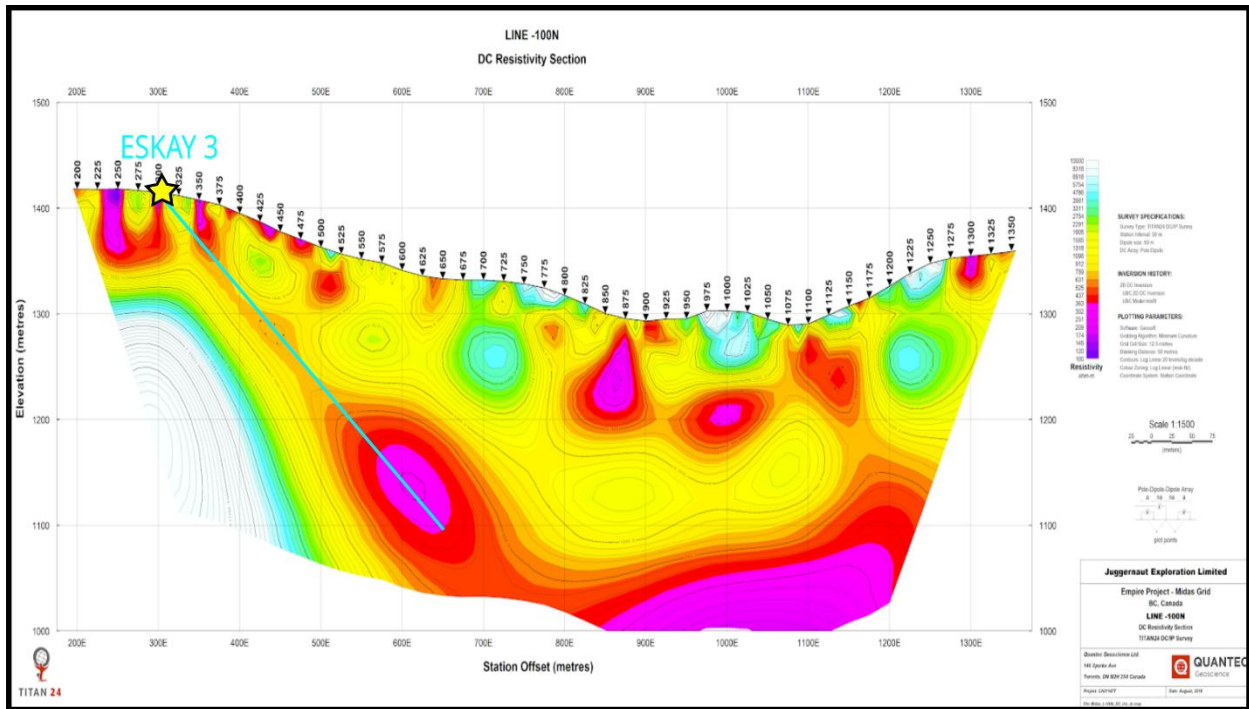
**VG Zone High Grade Gold Breccia - Drill Ready - VG Zone 2023 drilling is targeting a strong geophysical anomaly located directly below the VG Zone, a high-grade gold breccia outcrop where channels of up to 4.34 m wide graded 10.28 gpt Au.**



**Strong Eskay-Style VMS Target ESKAY 1 – Drill Ready –** Drilling on the Eskay-Style VMS IP is designed to intersect an untested IP chargeability anomaly core. The peripheral zone (halo) of this anomaly returned 0.56 g/t AuEq over 35.35 meters from hole MD-18-16 (oriented 270/50, EOH 269 m).

**Eskay 2 Target – Drill Ready –** 2023 drilling on the Eskay 2 Pad will target the large, previously untested IP anomaly to below the west of the pad location. Grab samples from outcrop above the anomaly contained up to 0.61 g/t Au, 31.4g/t Ag, and 2.24% Cu within a host rock prolific in propylitic alteration (depleted in Na, Ca, Si; enriched in Fe, Mg, Cu, Zn, Ag)

**Eskay 3 Target – Drill Ready –** Drilling on the Eskay 3 Target is designed to test a IP resistivity anomaly core occurring at 250-300 m depth. The orientation of the drill hole will also allow to test an area that was previously skimmed by hole MD-18-08, which assayed 6.85 gpt Au over 9 meters.



**For more information:**

Juggernaut Exploration Ltd.

**Dan Stuart, CEO**

[dan@juggernautexploration.com](mailto:dan@juggernautexploration.com)

1-778-233-0293

[www.juggernautexploration.com](http://www.juggernautexploration.com)