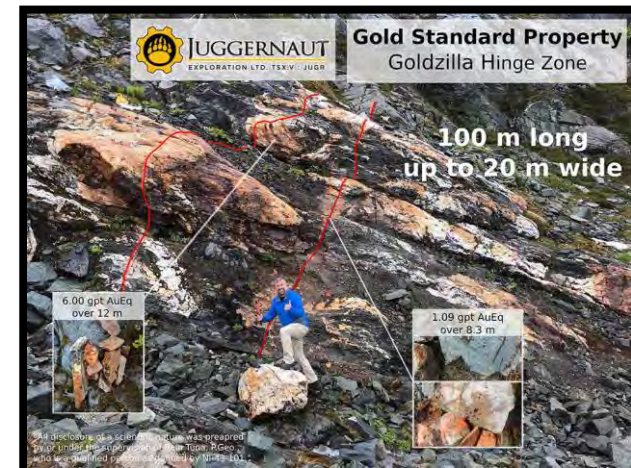
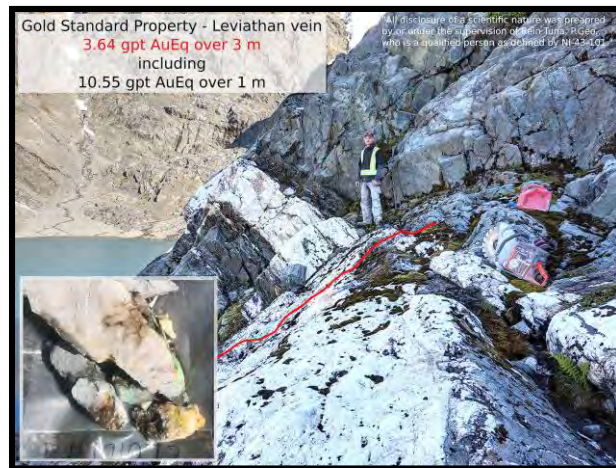


**TSX-V: JUGR**  
**FSE: 4JE**  
**OTCQB: JUGRF**



**ON TRACK FOR DISCOVERY**



# FORWARD LOOKING STATEMENT

This presentation may contain forward-looking statements, including management's assessments of future plans & operations, expectations of future production, cash flow, earnings, property options, TSX approval and closing of a financing. These statements are based on current expectations that involve a number of risks & uncertainties, which could cause actual results to differ materially from those anticipated.

Forward-looking statements may be identified by the use of words such as “believes”, “anticipates”, “expects”, “estimates”, “may”, “could”, “would”, “will”, or “plan”. Since forward looking statements are based on assumptions and address future events and conditions and property options by their very nature they involve inherent risks and uncertainties.

Actual results relating to, among other things, results of exploration, reclamation, capital costs, and the company's financial condition and prospects, could differ materially from those currently anticipated in such statements for many reasons such as but not limited to; changes in general economic conditions and conditions in the financial markets; changes in demand and prices for the minerals the Company expects to produce; litigation, legislative, environmental and other judicial, regulatory, political and competitive developments; technological and operational difficulties encountered in connection with the Company's activities; and changing foreign exchange rates and other matters discussed in this presentation.

Persons should not place undue reliance on the Company's forward-looking statements. Further information regarding these and other factors, which may cause results to differ materially from those projected in forward-looking statements, are included in the filings by the Company with securities regulatory authorities. The Company does not assume any obligation to update or revise any forward looking statement that may be made from time to time by the Company or on its behalf, except in accordance with applicable securities laws, whether as a result of new information, future events or otherwise.

The TSX Exchange has not reviewed and does not accept responsibility for the adequacy or accuracy of the contents of this presentation, that has been prepared by management.

This presentation does not constitute an offer to sell or a solicitation of an offer to buy any securities of the Company in any jurisdiction. Any such offer or solicitation will be made only in accordance with all applicable laws. The common shares of the Company will not be and have not been registered under the United States Securities Act of 1933, as amended, and may not be offered or sold in the United States, or to a U.S. person, absent registration or applicable exemption therefrom.





# CORPORATE OVERVIEW

- Juggernaut Exploration Ltd – **A New Ground Floor Opportunity**
- Focused on Northwestern British Columbia With Exposure to Over 10 Precious and Base Metal Projects
- **Seasoned Team:** 30 Years of a Proven Track Record of Discovery Culminating in ~1 Billion Dollars of Value
- **Goldstandard Property (Orogenic Gold system)**
- **Goldstar Property (Orogenic Gold system)**
- **Midas Property (Kuroko Style VMS system)**
- **Empire Property (Gold, Copper Porphyry System)**
- **Rapid Glacial and Snowpack Abatement** resulting in discoveries



# MANAGEMENT AND DIRECTORS

## **Dan Stuart, President & CEO, Director**

- >20 years of capital market experience
- >100 million dollars raised in the natural resource sector
- Founding member and capitalizer of several private mineral syndicates J2, DSM, YCS, B2
- Institutional clients in both the Americas and Europe

## **William Jung, Director & CFO**

- 35 years of experience in finance and business
- Former chartered accountant involved in management of companies on the TSX
- >25 years experience in the management of companies publicly listed on the TSX

## **Jim McCrea, Director**

- 25 years experience in exploration and mining
- 20 years in mineral resource estimation including Cumberland Resources
- Ore body modelling and resource estimation for the successfully targeted take over company Cumberland Resources Ltd. By Agnico-Eagle Mines Ltd.

## **Chris Verrico, Director**

- >20 years of managing mineral exploration projects in BC, Yukon, Alaska, Nunivut
- Experience as a contractor with extensive northern rural-remote infrastructure construction and contract mining projects

## **Peter Bryant, Director**

- 45 years of experience in international finance and investment banking
- Former director of investment banking with Standard Chartered Group
- Worked for Hill Samuel Group and Guinness Mahon Holding's, two of the prestigious merchant banking house in London, England

## **Dr. Quinton Hennigh**

Technical Advisor

- World renowned exploration geologist with >30 years of experience with major miners Homestake, Newcrest and Newmont. CHM & President of Novo TSX.V: NVO

## **Bill Chornobay**

Program Manager

- >30 years proven track record; discoveries resulting in ~1 billion dollars in value.



## CURRENT SHARE STRUCTURE

SHARES ISSUED AND OUTSTANDING AVG COST \$1.50	38,233,481
OPTIONS @ \$0.22 Expiry Dec 30/25	2,045,500

Number of Warrants	Exercise Price	Expiry Date
17,800,000	\$0.375	March, 2023
3,165,540	\$0.40	February 6, 2022
994,020	\$0.40	March 2, 2022
1,419,263	\$0.80	July 17, 2022
2,000,000	\$0.20	March 10, 2025
1,700,000	\$0.14	October 16, 2025
1,700,000	\$0.12	November 12, 2025

## CAPITAL STRUCTURE

- No Debt
- Management, insiders, and accredited investors ~ 70%
- Strong support from institutions
- ~ \$6MM Cash
- Crescat Capital 9.90%





# GOLD STANDARD OROGENIC GOLD SYSTEM

[Goldzilla Vein Video – Oct 2019](#)

[Kraken Vein – Oct 2019](#)

[Leviathan Vein – Oct 2019](#)

[Gold Standard - 2018](#)



6<9000 650000 6S1000 6S2000

**Titanoboa**  
Grab sample  
2.12gptAu  
300 m strike x 8 m wide x 80 m vertical relief  
remains open

**Leviathan**  
Channel sample  
3.64 gpt AuEq over 3 m  
10.55 gpt AuEq over 1 m  
500 m strike x 5 m wide x 50 m vertical relief  
remains open

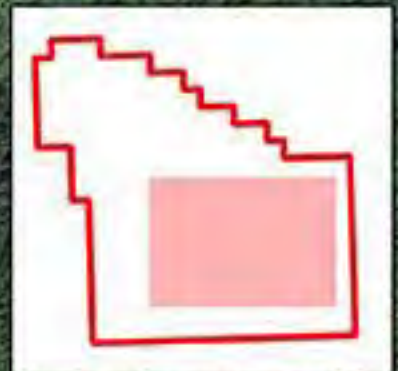
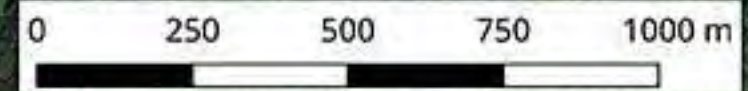
**East Vein**  
Grab sample  
7.22 gptAu  
600 m strike x 3 m wide x 60 m vertical relief  
remains open

**GoldZilla**  
Channel sample  
6.00 gpt AuEq over 12 m  
31.65 gpt AuEq over 1 m  
938 m strike x 20 m wide x 300 m vertical relief  
remains open  
DRILL READY

**Kraken**  
Channel sample  
2493 gpt AuEq over 0.7 m  
1000 m strike x 15 m wide x 500 m vertical relief  
remains open

**Phoenix**  
Grab sample  
1.18 gpt Au  
200 m strike x 5 m wide x 40 m vertical relief  
remains open

# Gold Standard Property Big Show High Strain zone expanded to 4.5 x 1.5 km



5812000

5811000

5810000

5812000

5811000

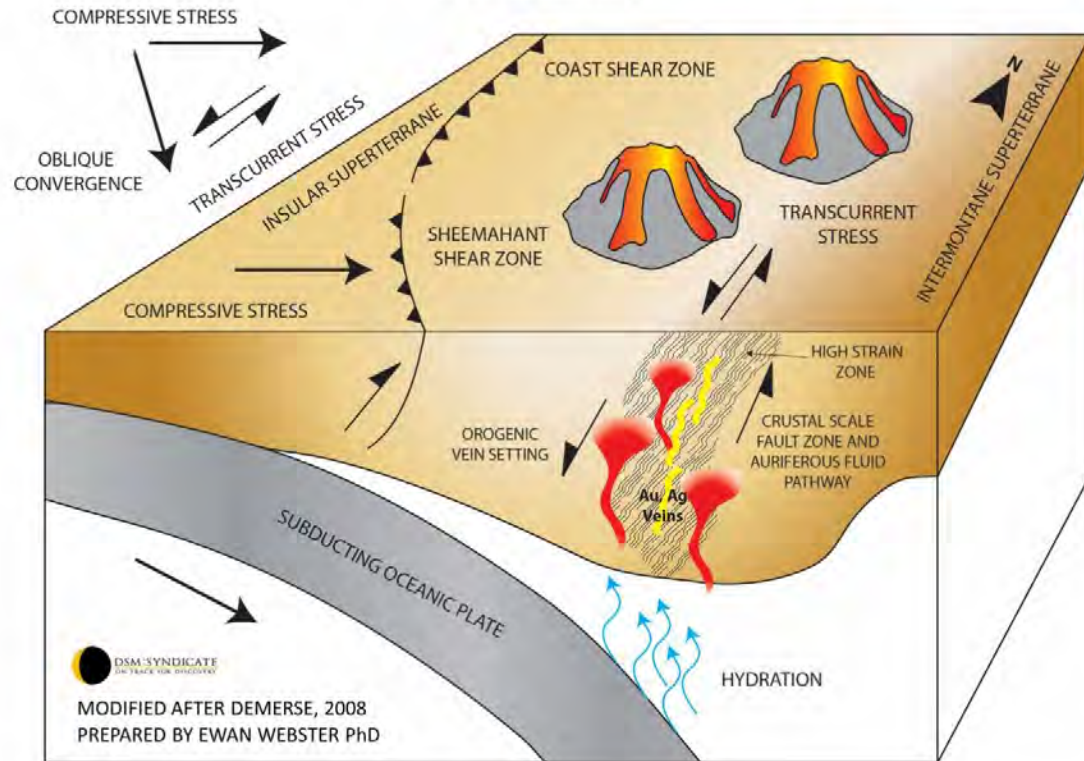
5810000

6<9000 650000 6S1000 6S2000





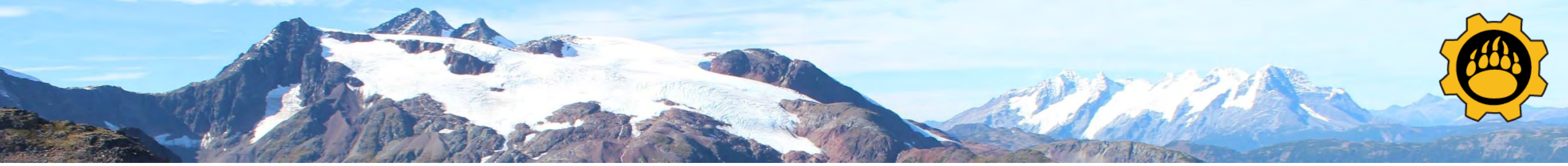
## POSSIBLE TECTONIC SETTING OF THE HIGH STRAIN ZONE AND GOLD MINERALIZATION (LATE CRETACEOUS)



- The 2019 exploration program has further confirmed the extent of gold mineralization within multiple quartz veins and shear zones, within the Big Show High Strain zone confirming an extensive orogenic gold system within the Gold Standard property.
- The prolonged faulting and shearing within this structural corridor on the Gold Standard property provided extensive conduits for mineralizing fluids and favourable sites for mineralization. Within the Big Show Zone, veins occur in an en-echelon pattern to the regional north-northwest orientation of the major shear zones. These orogenic characteristics are consistent with gold-bearing mineralized veins and shear zones.
- Approximately 67% of Canadian gold production comes from this world class geologic setting, with examples including the nearby Bralorne Pioneer Camp in British Columbia (4.17 Moz) with depths to ~2km, and many regions within the Canadian shield including Kirkland Lake (>40 Moz), Timmins (>70 Moz), Val d'Or/Noranda (>69 Moz) and Red Lake gold camps (>29 Moz). These gold deposits typically contain average mining grades of ~5 gpt Au to ~15 gpt Au, similar to what is found at the Gold Standard property. Other orogenic systems are currently being explored such as Great Bear Resources Dixie project that confirm similar grades in drilling.

Orogenic Gold Systems are often deep rooted and are mined to depths of 1 to 3 kilometres. ([Orogenic Model1](#))





Based on the discovery of multiple new gold mineralized veins the claim block was recently expanded from 1774 Ha to 3961 Ha.

Seven large shear zone hosted mineralized vein systems containing consistent high-grade gold mineralization have been discovered to date.

**Vein Highlights include:**

- **Goldzilla Vein: (Hinge Zone)**

CUTS 12 METRES OF 6.00 grams per tonne gold equivalent ON GOLD STANDARD

The hinge zone is part of the Goldzilla orogenic vein system that has been traced for 800 metres with a vertical relief of 300 metres and remains open to the South East. **Channel cut grades on the Hinge Zone assayed up to 5.86 grams per ton (g/t) gold and 6.00 g/t AuEq (Gold Equivalent) over 12 metres including 5 metres of 13.03 g/t AuEq and 1 metre of 31.66 g/t AuEq true width.** ([Schematic of Hinge Zone](#))

- **The Leviathan vein:**  
has been traced on surface for 500 m with 50 m of vertical relief and remains open. Channel sampling from 2019 returned grades of up to 3.65g/t AuEq over 3 m including 10.55g/t AuEq over 1 m true width. ([Leviathan Schematic](#))
- **The Kraken Vein:**  
has been traced on surface for 1000 m with 520 m of vertical relief and remains open. Channel samples from 2019 returned grades of 29.48g/t AuEq over 0.7 m and a 1m chip taken 305m along strike grading 6.52g/t Au. ([Kraken Schematic](#))

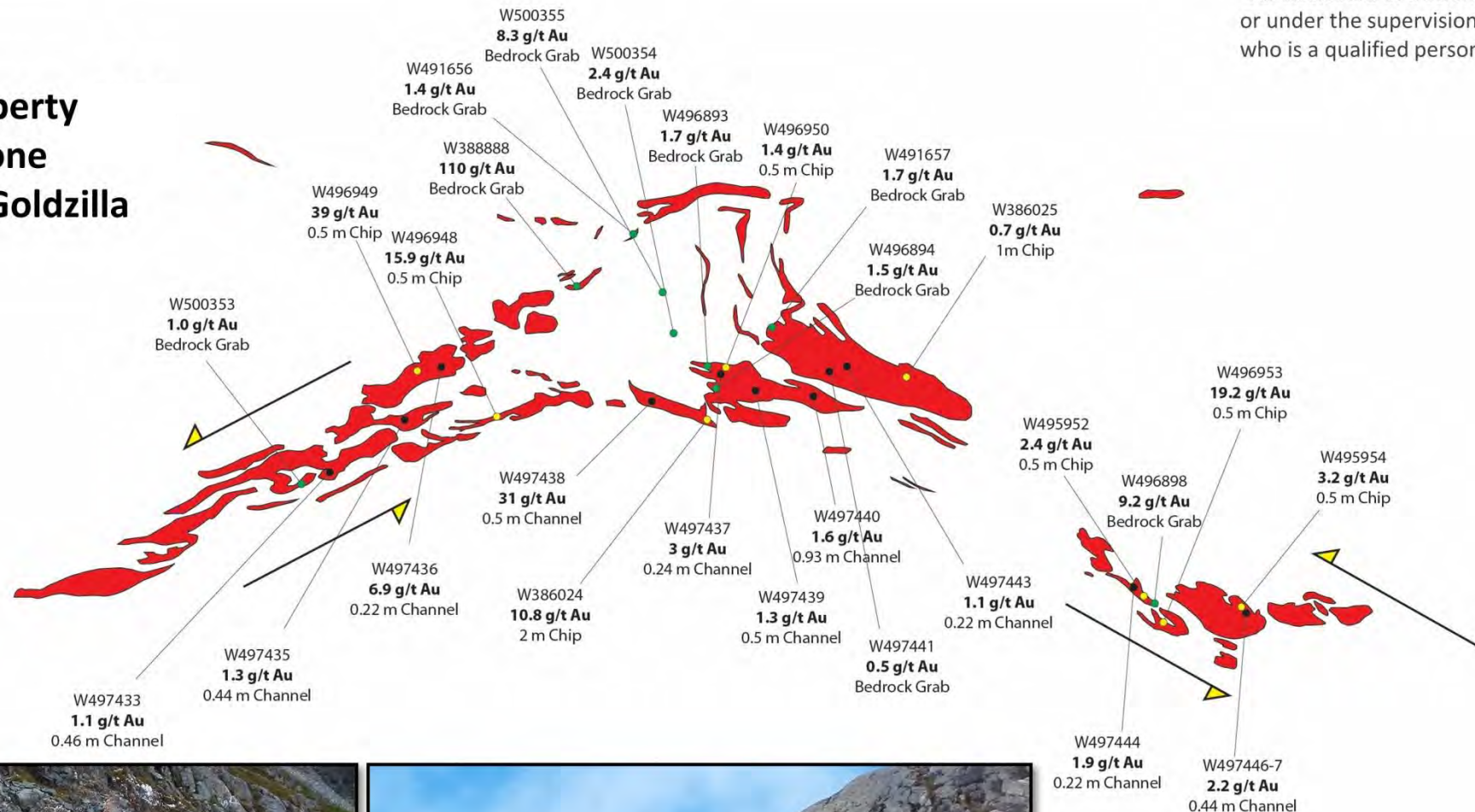
**The Goldstandard property is located on the central coast of British Columbia, 4 km from major infrastructure and 1km to tidewater and logging roads.**

**Multiple other large veins were also discovered and have yet to be sampled providing for excellent additional gold potential.**



"All disclosure of a scientific nature was prepared by or under the supervision of Stephen Roach P.Geo., who is a qualified person as defined by NI-43-101."

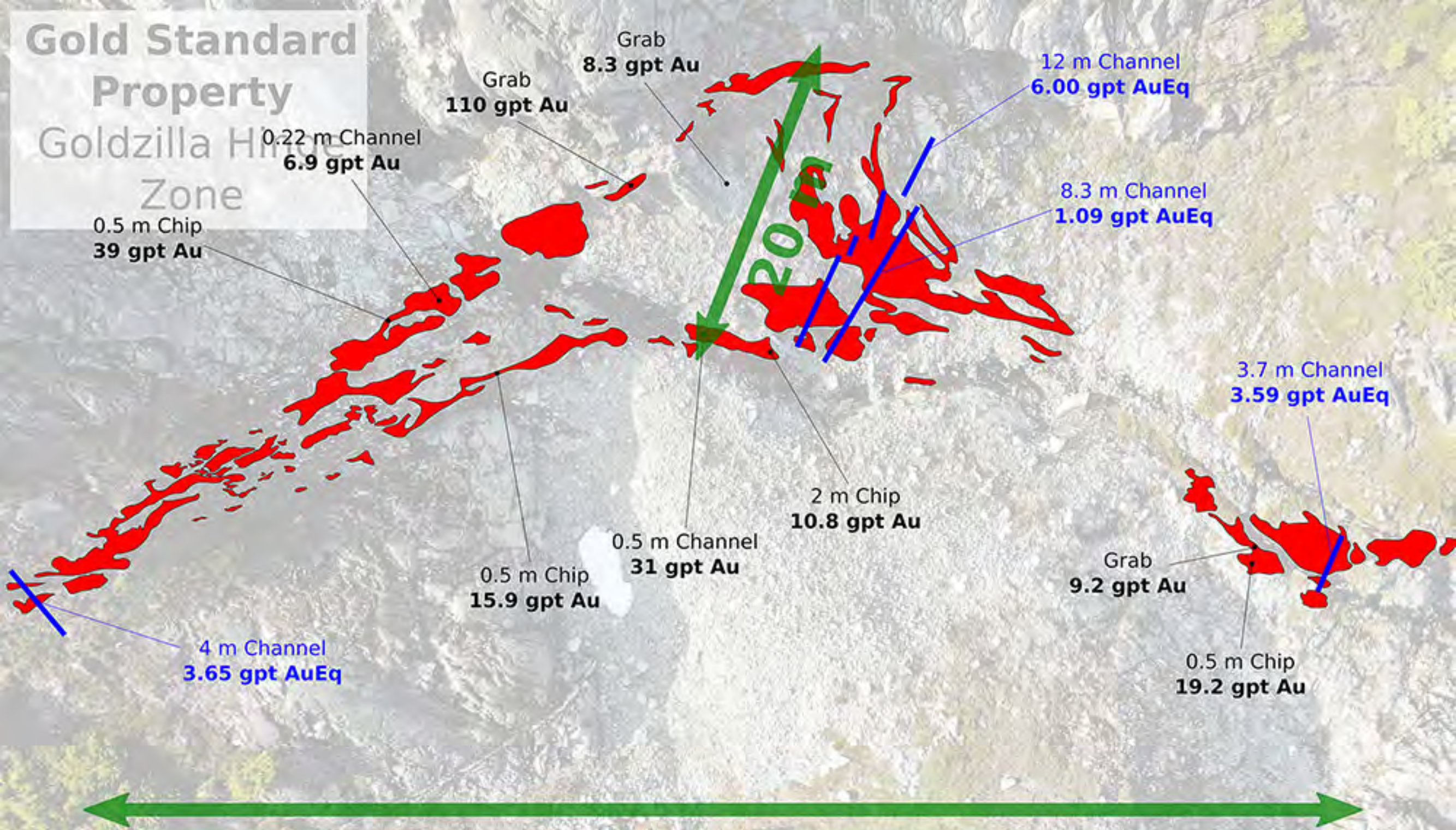
# Gold Standard Property Big Show Zone Vein System 2 - Goldzilla





# Gold Standard Property

## Goldzilla Hinge Zone



100 m



**JUGGERNAUT**  
EXPLORATION LTD. TSX.V : JUGR

### Legend

- 2018 Samples
- 2019 Channels



AStar: 11 m



20 m



"All disclosure of a scientific nature was prepared by or under the supervision of Rein Turna, P.Geo., who is a qualified person as defined by NI-43-101."



**100 m long  
up to 20 m wide**

6.00 gpt AuEq  
over 12 m



1.09 gpt AuEq  
over 8.3 m





# Gold Standard Property

## Leviathan vein



# JUGGERNAUT

EXPLORATION LTD. TSX.V : JUGR

"All disclosure of a scientific nature was prepared by or under the supervision of Rein Turna, P.Geo., who is a qualified person as defined by NI-43-101."

Grab  
**21.8 g/t Au**

Grab  
**13.4 g/t Au**

0.25 Channel  
**16.2 g/t Au**

Grab  
**31.9 g/t Au**

Grab  
**40.5 g/t Au**

1.5 m Chip  
**26.9 g/t Au**

Grab  
**96.8 g/t Au**

3 m Channel  
**3.65 g/t AuEq**

Grab  
**17.4 g/t Au**

Legend

- 2018 Samples
- 2019 Channels



# Gold Standard Property 2018

## Big Show Zone

### Vein System 3 - Leviathan



W495976  
21.8 g/t Au  
Grab



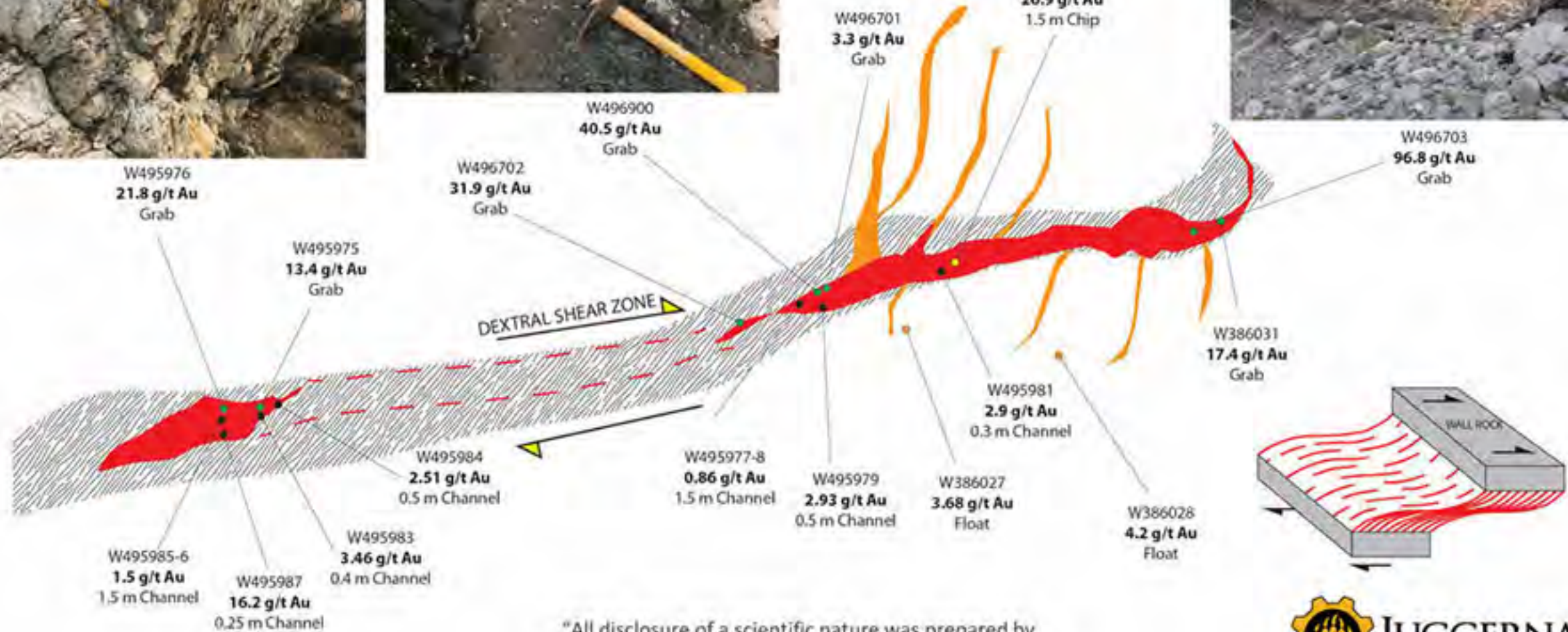
W496900  
40.5 g/t Au  
Grab



W386026  
26.9 g/t Au  
1.5 m Chip



W496703  
96.8 g/t Au  
Grab



"All disclosure of a scientific nature was prepared by or under the supervision of Stephen Roach P. Geo., who is a qualified person as defined by NI-43-101."





Gold Standard Property - Leviathan vein  
**3.64 gpt AuEq over 3 m**  
including  
10.55 gpt AuEq over 1 m

"All disclosure of a scientific nature was prepared by or under the supervision of Rein Tuna, P.Geo., who is a qualified person as defined by NI-43-101."

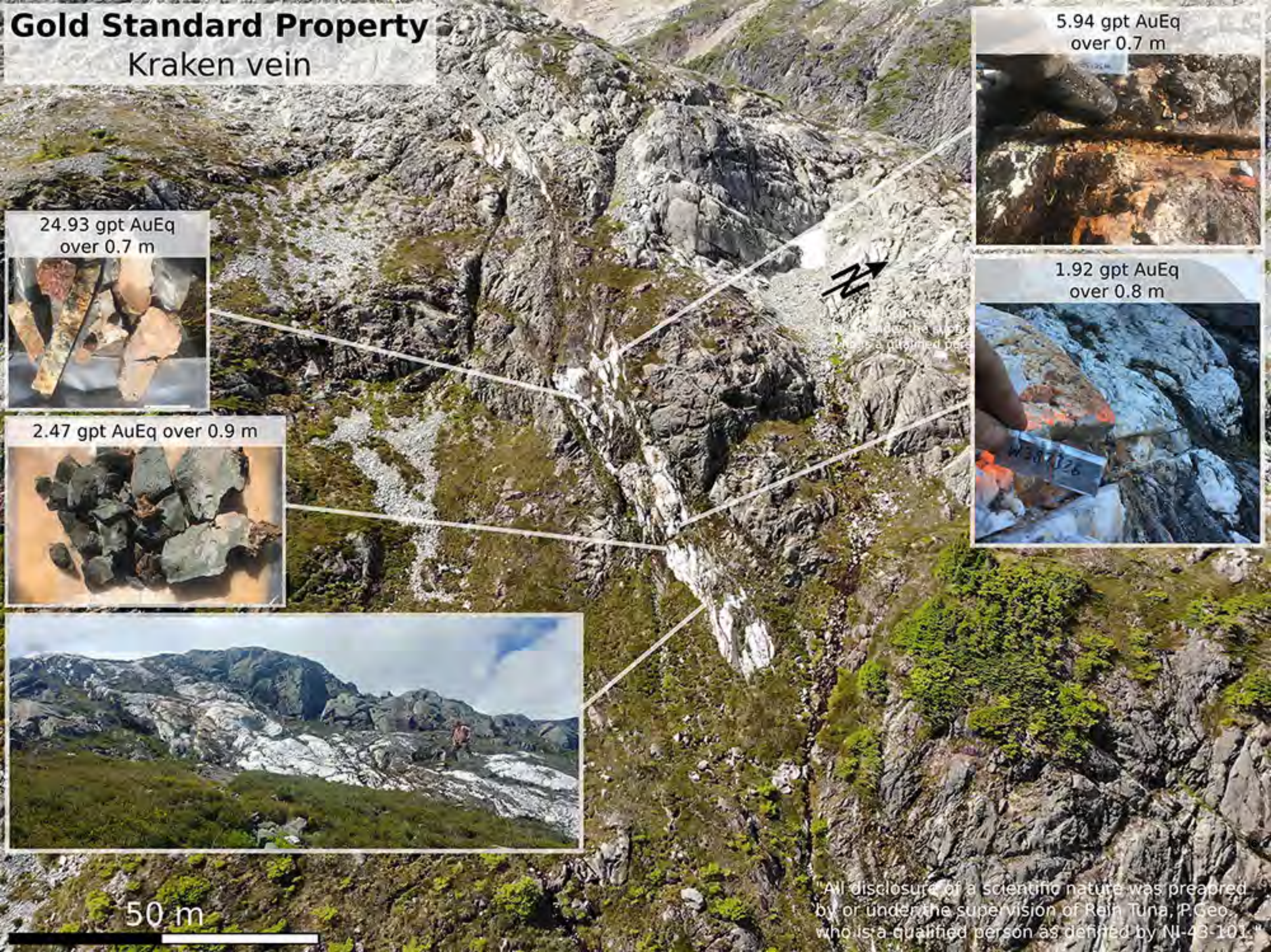


**JUGGERNAUT**  
EXPLORATION LTD. TSX.V & JUGR



# Gold Standard Property

## Kraken vein



24.93 gpt AuEq  
over 0.7 m



2.47 gpt AuEq over 0.9 m



5.94 gpt AuEq  
over 0.7 m



1.92 gpt AuEq  
over 0.8 m



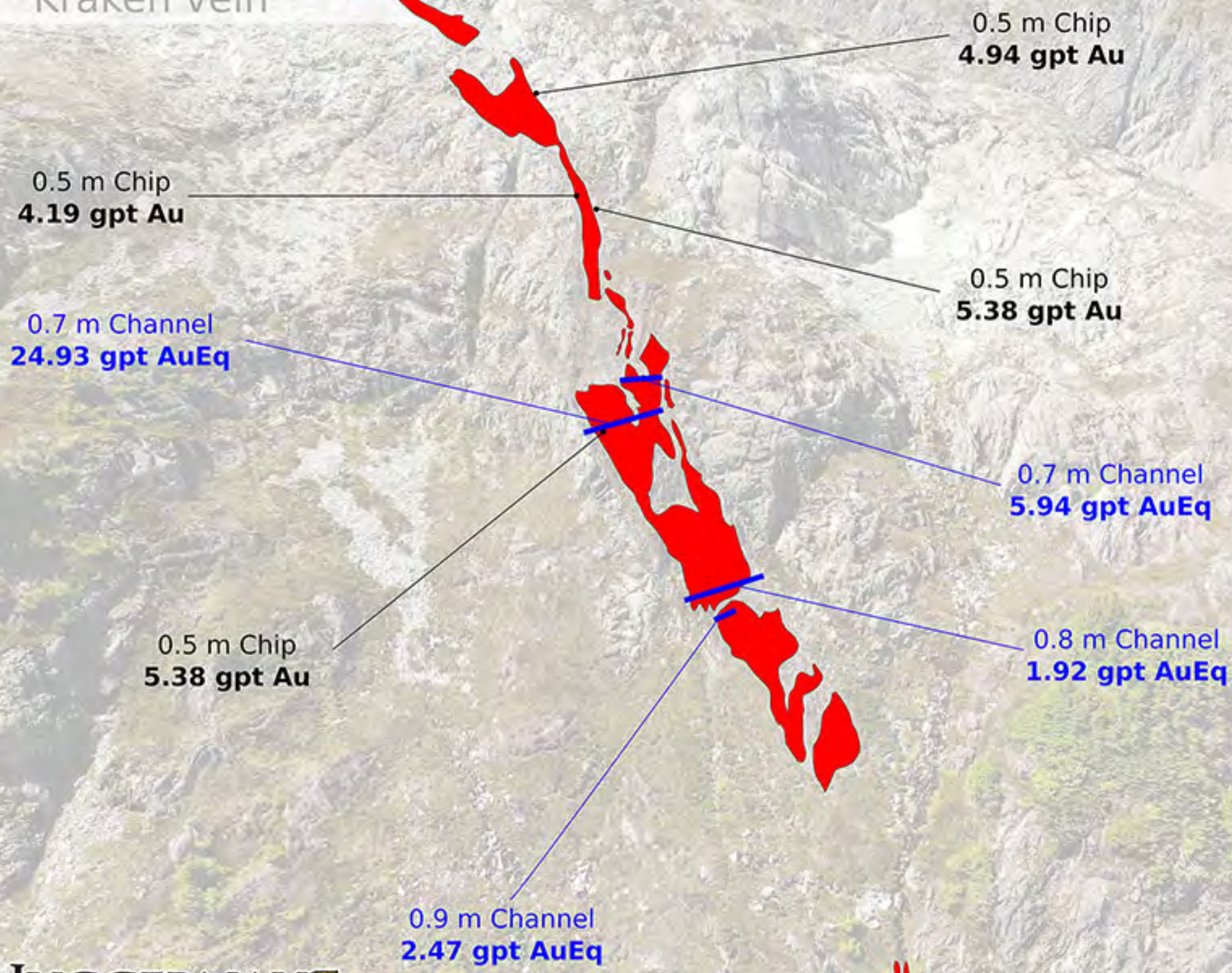
50 m

All disclosure of a scientific nature was prepared by or under the supervision of Rein Tuna, P. Geo, who is a qualified person as defined by NI-43-101.



# Gold Standard Property

## Kraken vein

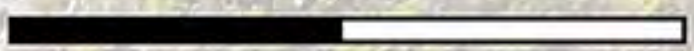


### Legend

- 2018 Samples
- 2019 Channels



40 m



"All disclosure of a scientific nature was prepared by or under the supervision of Rein Turna, P.Geo., who is a qualified person as defined by NI-43-101."



648700 648800 648900 649000 649100 649200 649300 649400

5810700

5810600

5810500

5810400

5810300

648700 648800 648900 649000 649100 649200 649300 649400

5810700

5810600

5810500

5810400

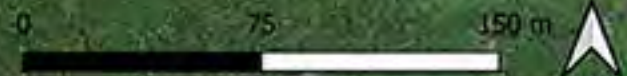
5810300

18

Potential 2nd hinge zone?  
600 m SE of Goldzilla Hinge Zone

1 m Chip  
6.52 gpt Au

Main Kraken Showing





Gold Standard Property - Kraken vein

6.52 gpt Au grab sample

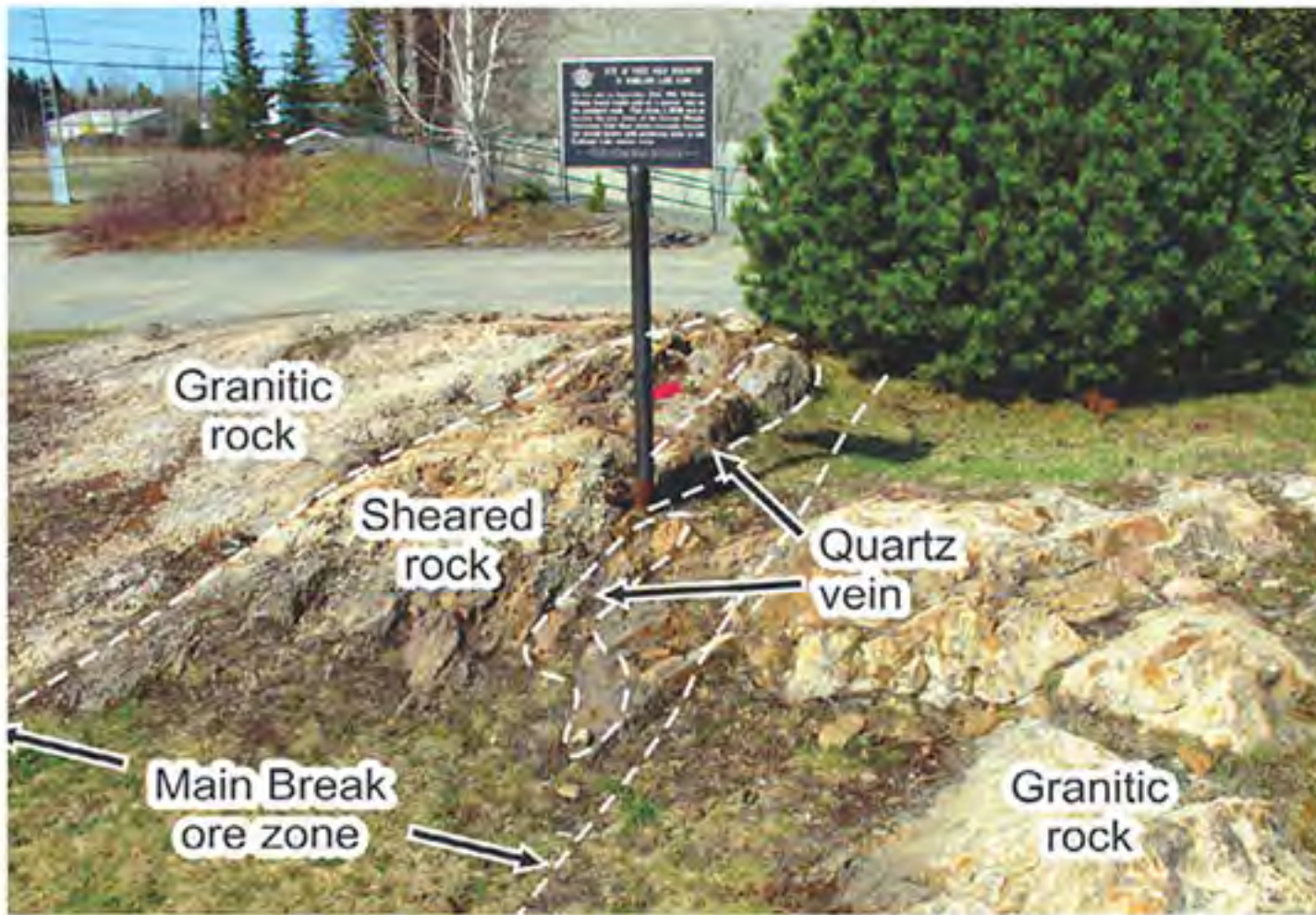
Along strike with Kraken vein

A0601375



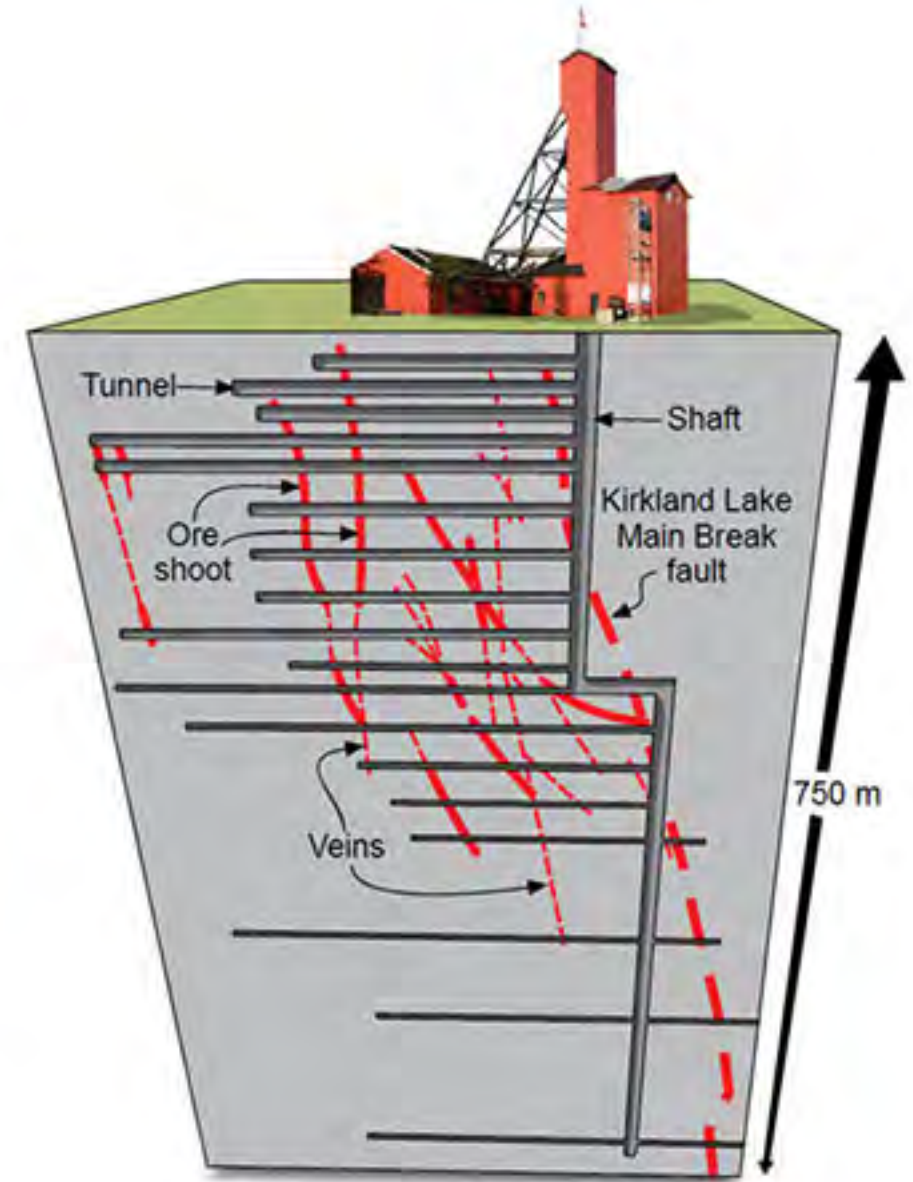
All disclosure of a scientific nature was prepared by or under the supervision of Rein Tuna, P.Geo., who is a qualified person as defined by NI-43-101.





**Kirkland Lake Discovery Outcrop – Similar Style to Gold Standard (Orogenic Gold System)**

Small quartz vein hosted in shear zone on surface led to the development of the Toburn mine where multiple high grade veins were discovered and mined in the subsurface down to depths of 750 metres.





# Share Performance – 18 months to Oct 2019

GBR: 300MM MCAP    JUGR: 3MM MCAP POST FINANCING

★ = New Gold Discoveries



1,175% return over 18 months  
~ (\$0.49 to \$6.25)

457% return during 2018  
~ (\$0.37 to \$2.39)

162% return during 2019  
~ (\$2.39 to \$6.25)

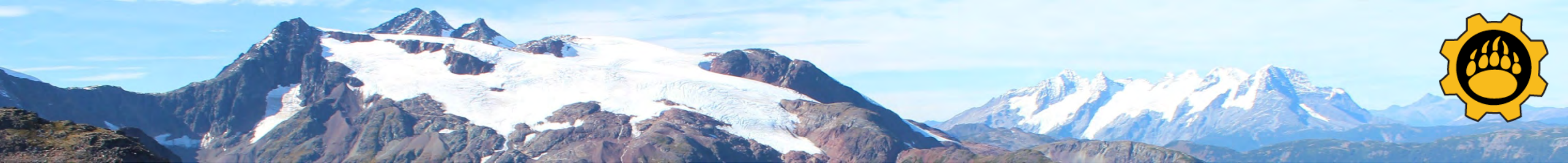




## ***Goldstandard Closing Comments***

- *These orogenic gold systems are commonly mined to depths of 1 to 3 kilometres. This geologic setting and model have proven to host several world class high grade multi-million ounce deposits.*
- *Future exploration has excellent potential to expand on these discoveries both along strike and at depth. **This project has already garnered the interest of several miners and institutions alike confirming the significance of this opportunity.***
- The company will focus on how best to lever Goldstandard to its full potential, we are currently evaluating many options including potential strategic partnerships. The company remains focused on maximizing value through positive exploration results while simultaneously minimizing dilution going forward thereby unlocking the full potential for its shareholders.
- *We look forward to the inaugural drill program designed to trace the discovery zone to depth and along strike.*

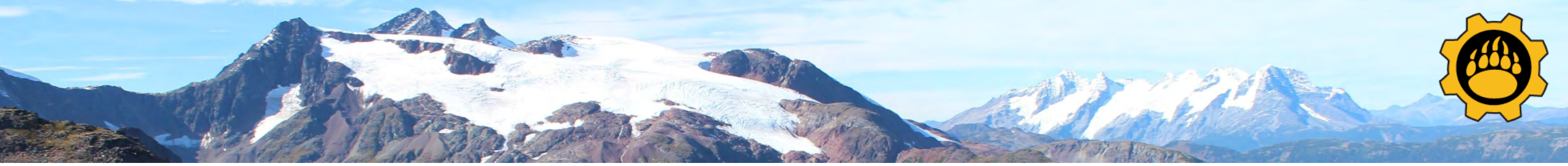




# MIDAS VMS PROPERTY

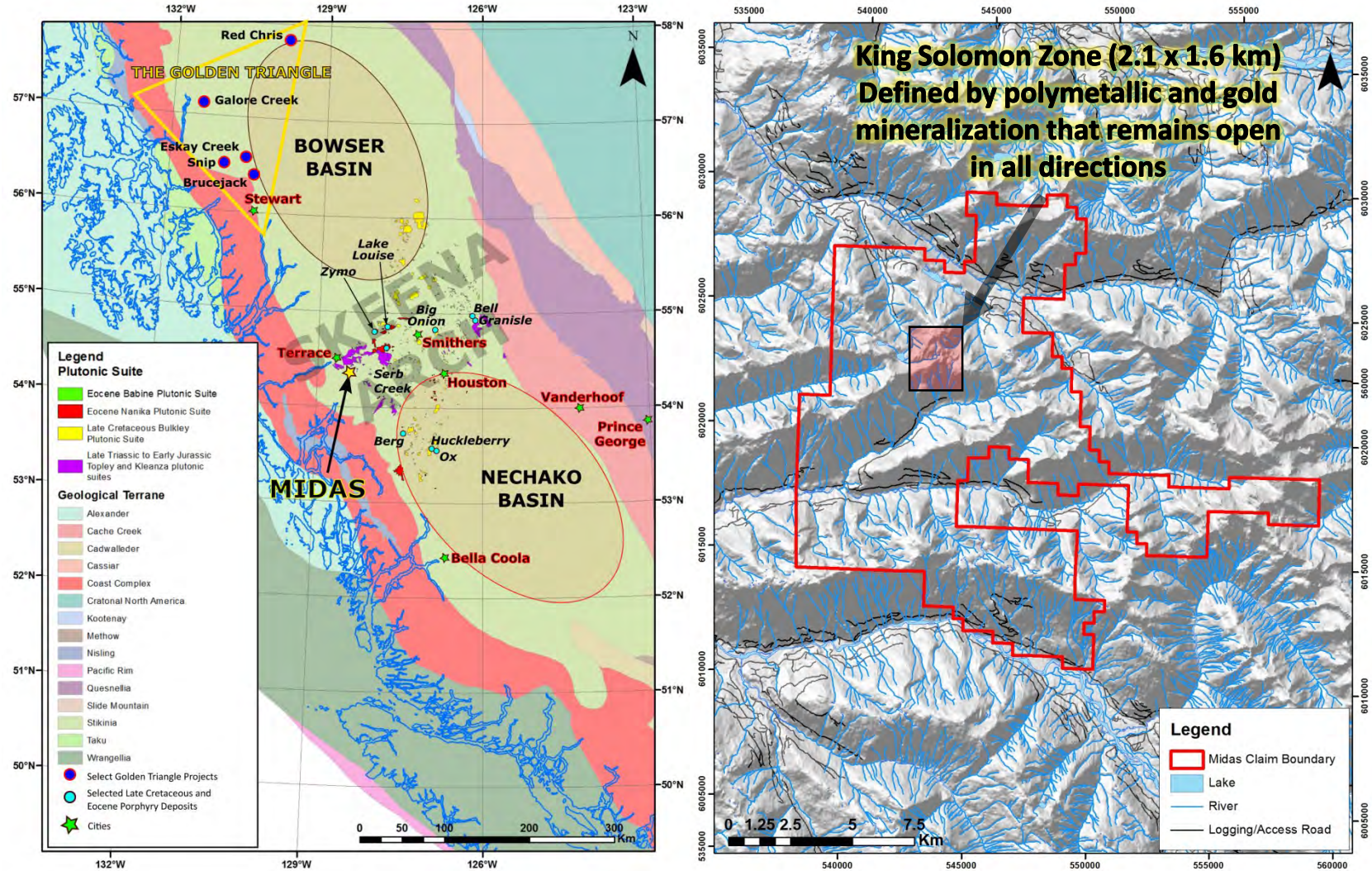
[MIDAS VIDEO 2019](#)  
[KING SOLOMON ZONE VIDEO](#)



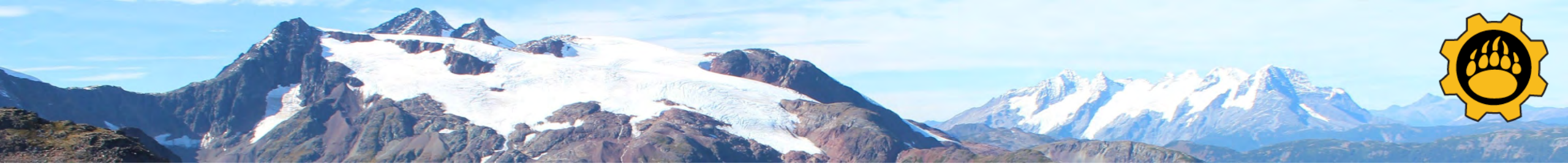


# MIDAS PROPERTY

- The Midas Property is **16,653 ha**
  - 100 % controlled by Juggernaut
- Logging road access on property
- 14 km to major power, CN rail, and roads
- Further, 10 km to Terrace, BC and major infrastructure, and further 45 km from Kitimat deep seaport and Rio Tinto smelter
- **World class geological setting** with strong potential for VMS Eskay Creek style mineralization

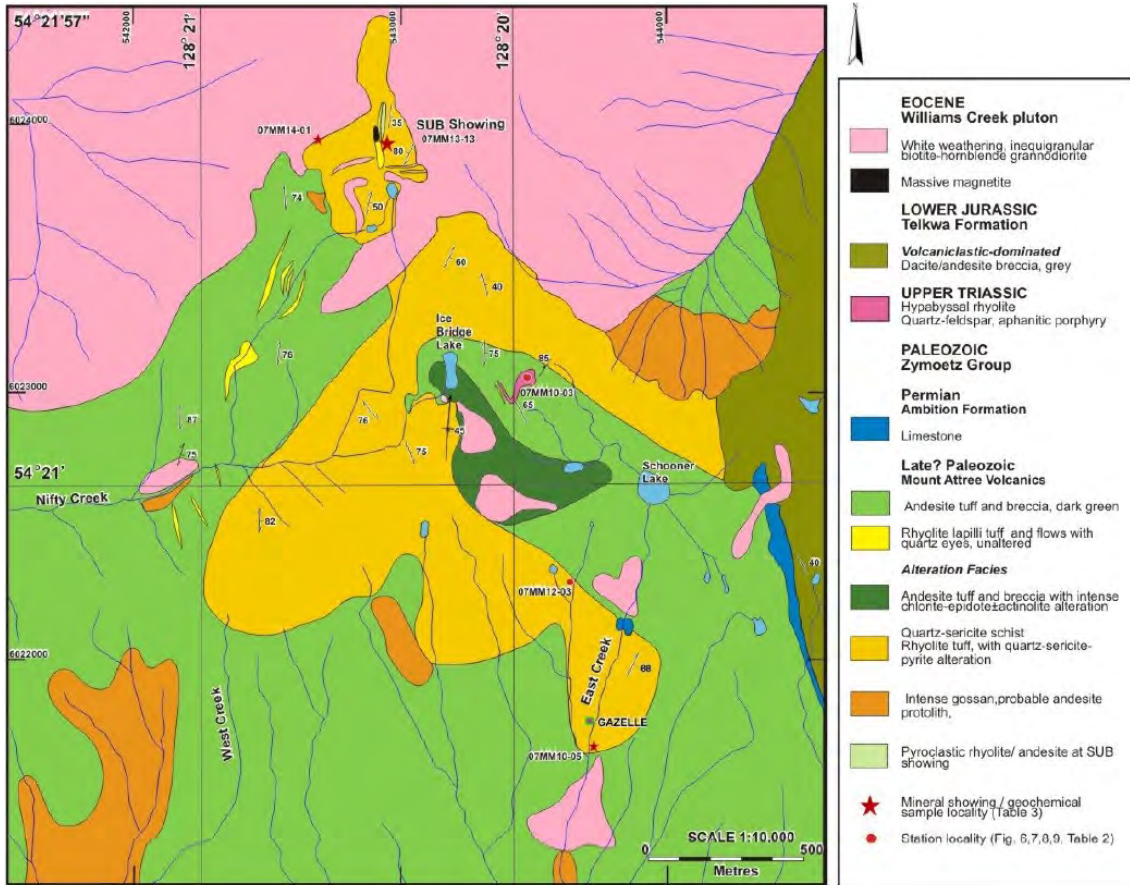






2007 BCGS MAP by M. McKeown and J. Nelson

## Stratigraphy and Alteration

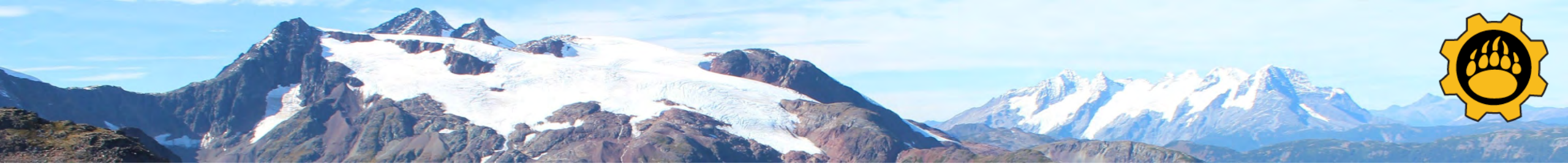


- Conformable sequence of layered Paleozoic felsic to intermediate volcanoclastic rocks
  - Compositionally variable sequence that consists largely of:
    - Andesitic flows**, tuff and breccia with
    - Rhyolite flows**, tuff and breccia
- Extensive, intense gossans that occur in the quartz sericite schist, as well as in the silicified, chlorite-pyrite andesite tuff.

“Through regional and local mapping, the stratigraphy of Paleozoic and Jurassic volcanic rocks in the area southeast of Terrace has been clarified and a new unit that is prospective for VHMS deposits has been identified.”

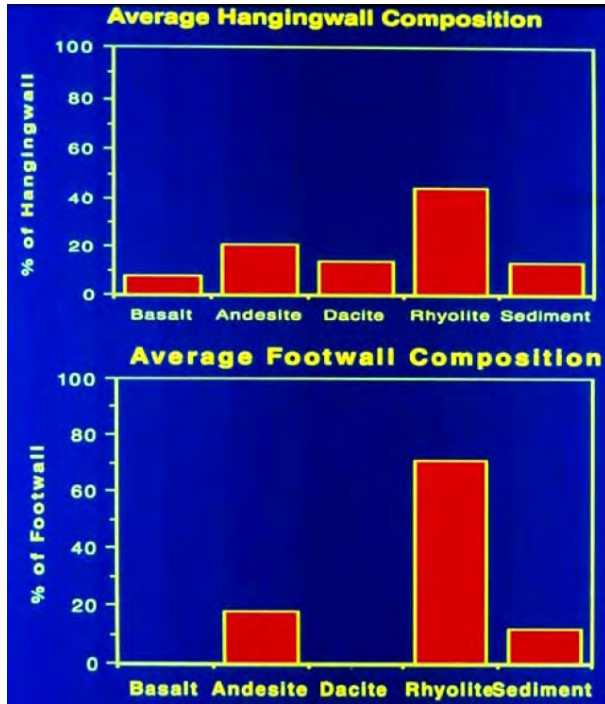
*M. McKeown 2007, BCGS*



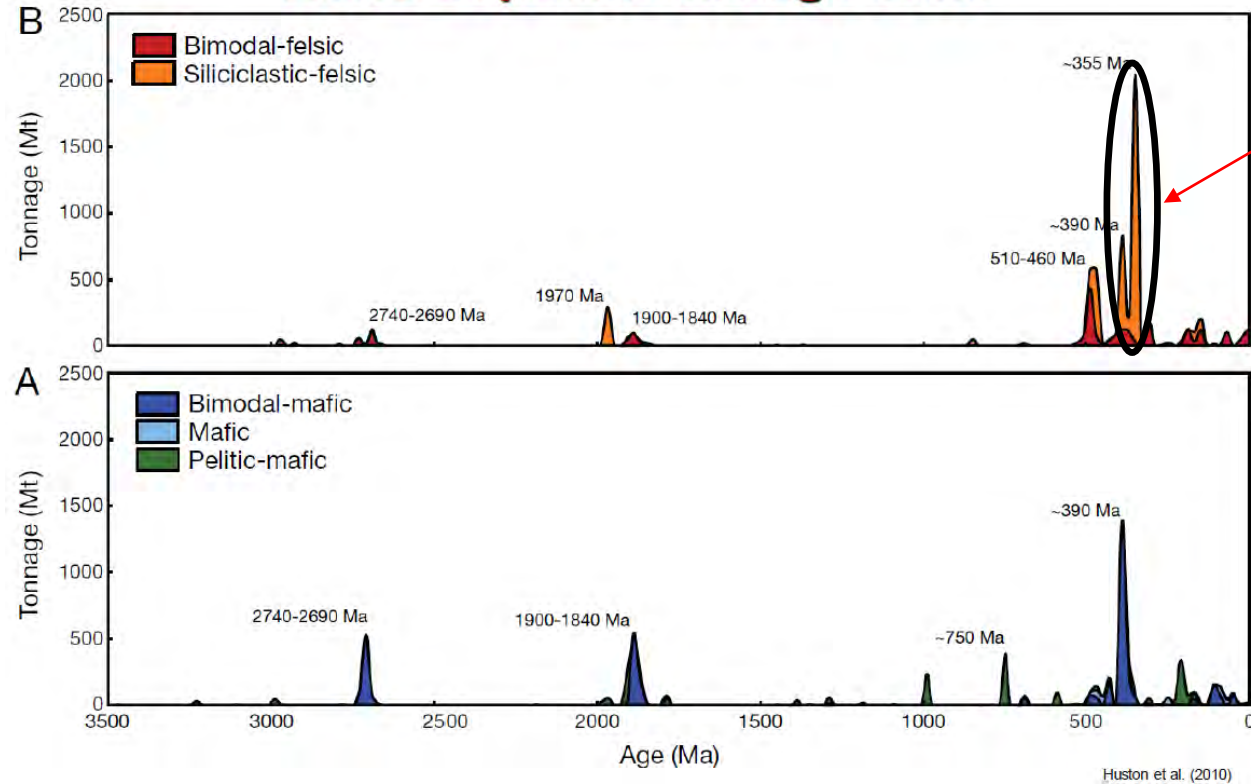


# VHMS Mineralization Potential

## VHMS Deposits through Time



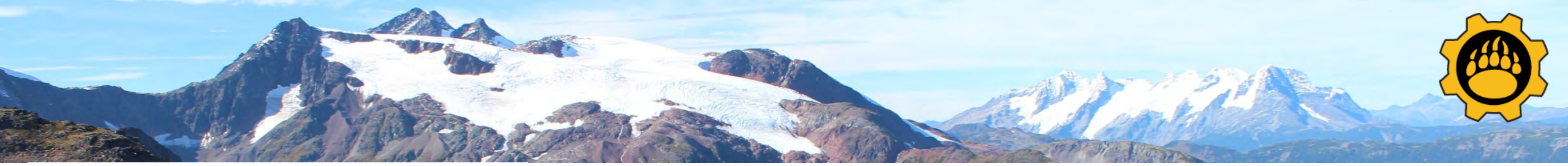
Midas - Mt Attree Volcanics  
Predominantly Andesite/Rhyolite



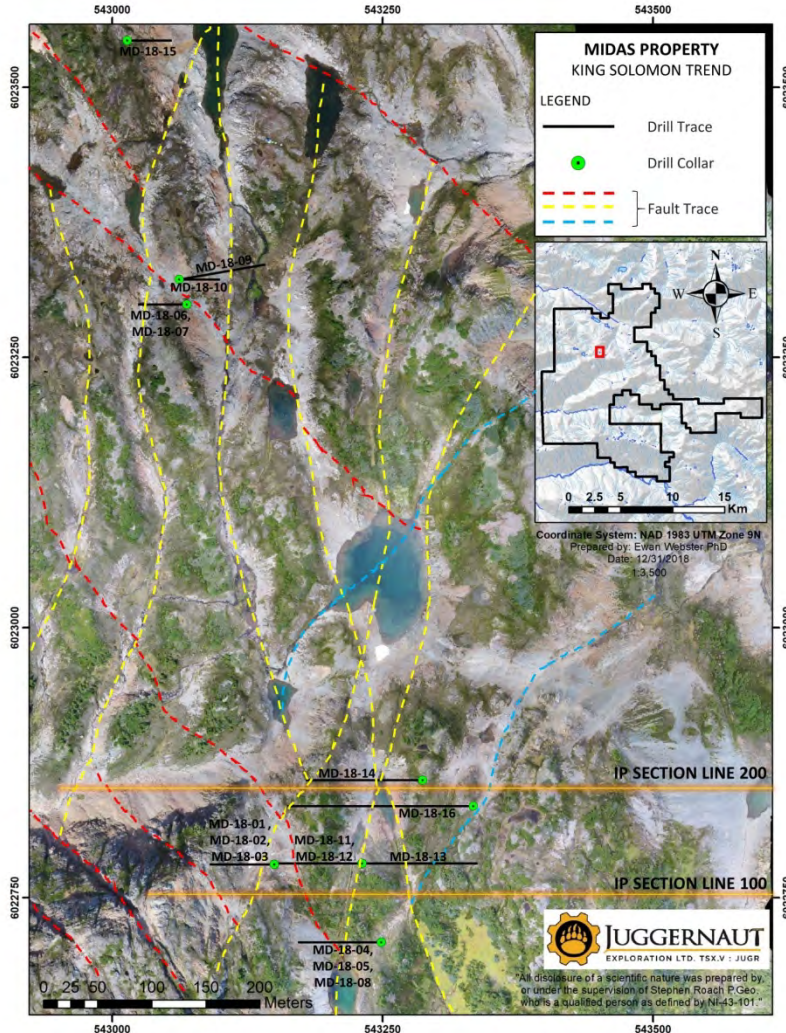
Mt Attree Volcanics  
Mississippian in age

King Solomon Zone Discovery has the right age and type of rocks known to host the majority of VHMS deposits

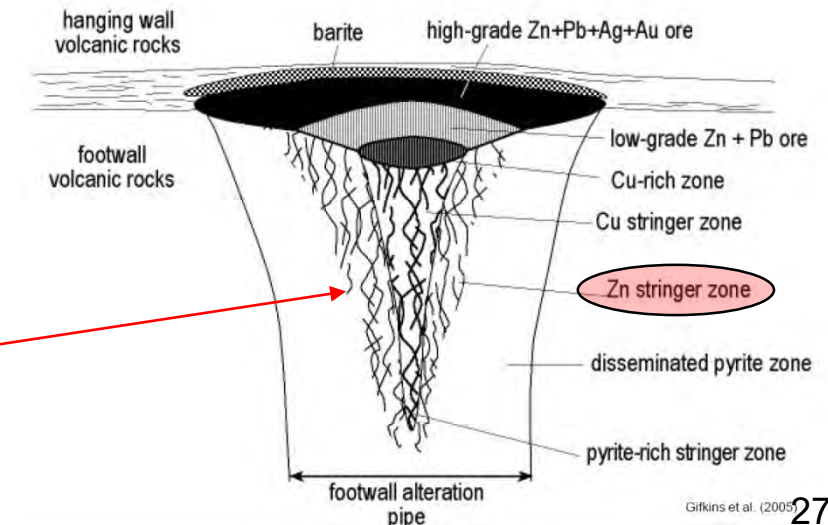




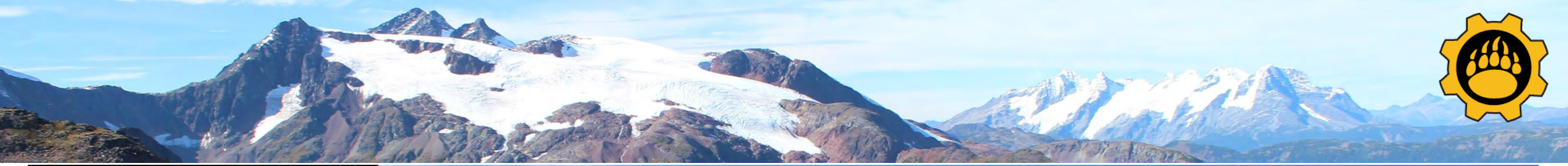
## KING SOLOMON ZONE SUMMARY



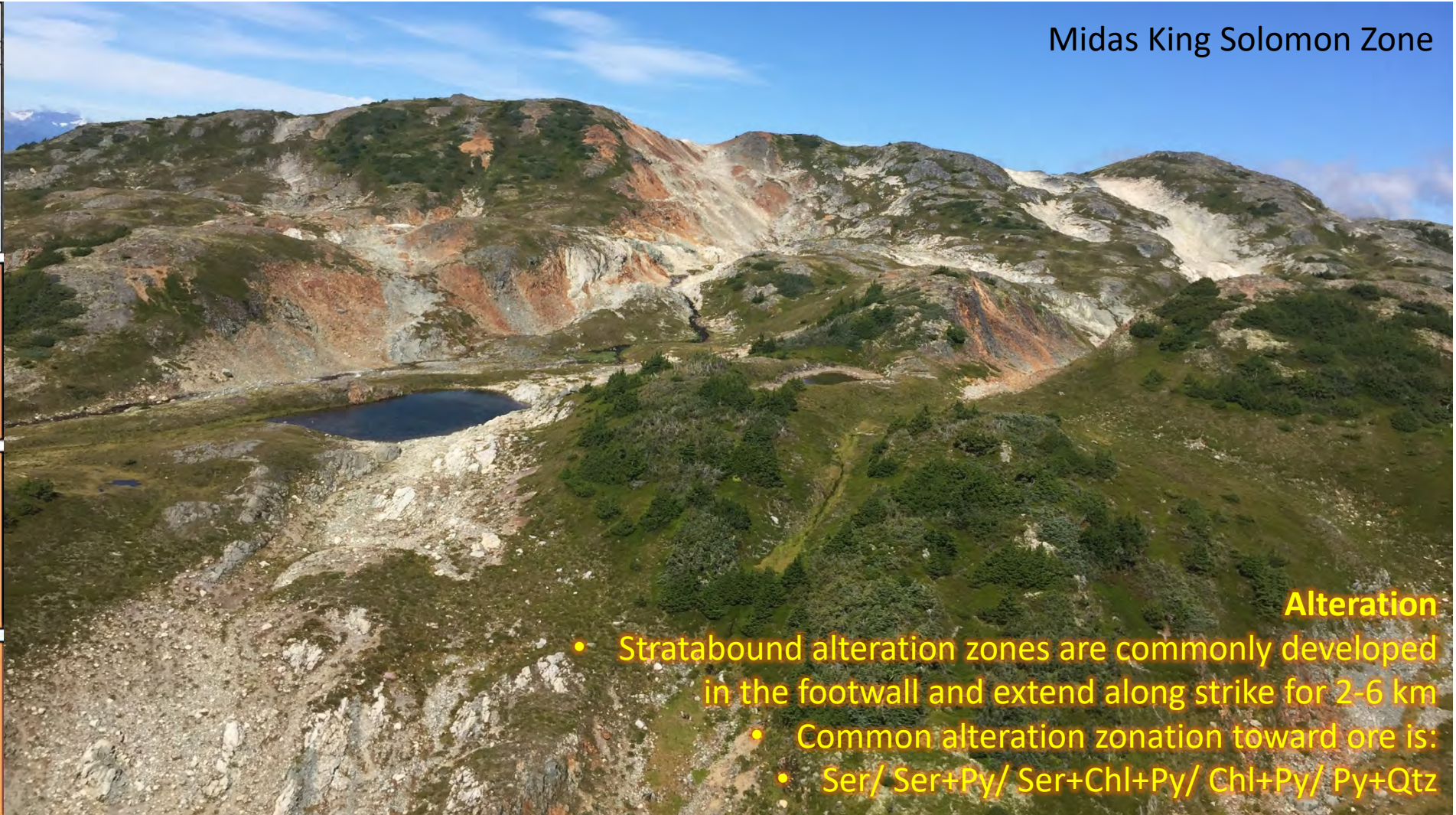
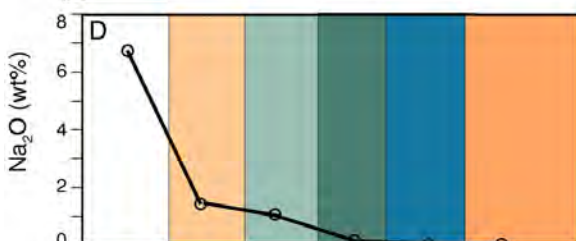
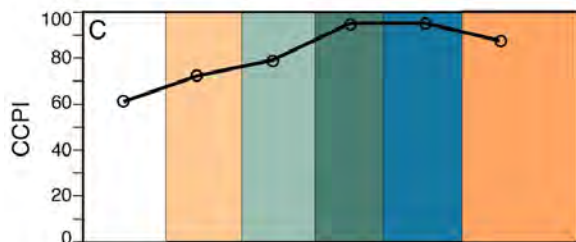
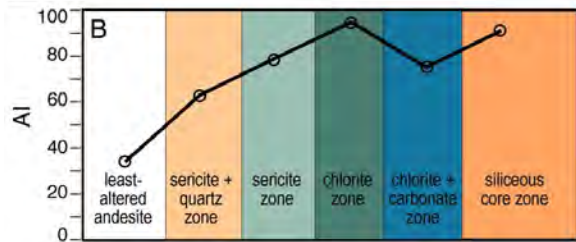
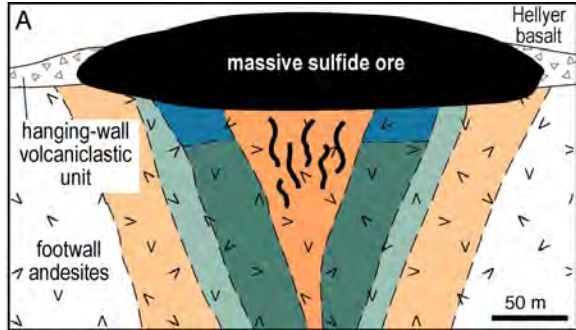
- BCGS mapped an **18 x 10 km alteration zone** of intense gossan development and quartz-sericite-pyrite alteration.
  - King Solomon Zone (2.1 x 1.6 km )** falls within the larger alteration zone.
  - Mapped a series of bimodal volcanics and sediments that was subsequently mapped in detail by JUGR senior geologist Stephen Roach.
- The 2018 mapping, geochemistry, alteration studies, and geophysics, combined with the inaugural exploratory shallow drilling, was designed to expand the understanding of the controls on mineralization and the geological model.
- Drilling Highlights
  - MD-18-08 intersected **6.85 g/t Au over 9.0 m**
  - MD-18-16 intersected **0.55 g/t AuEq over 35.35 m**
    - 0.21 Au g/t Au, 0.18 g/t Ag, 0.32 % Zn, 0.08 % Cu, 0.02 % Pb
    - Possible source of this mineralization is the intensely silicified stringer zone of a VHMS system







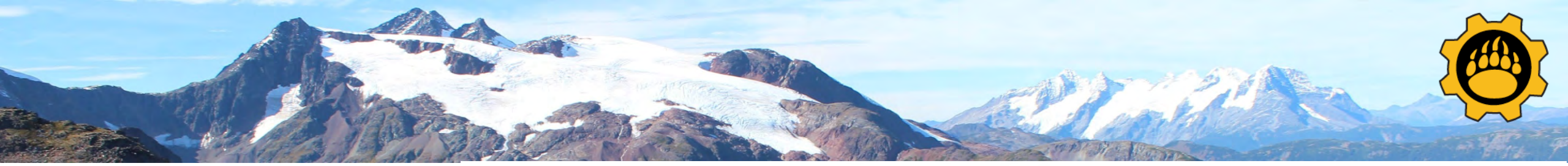
# Midas King Solomon Zone



## Alteration

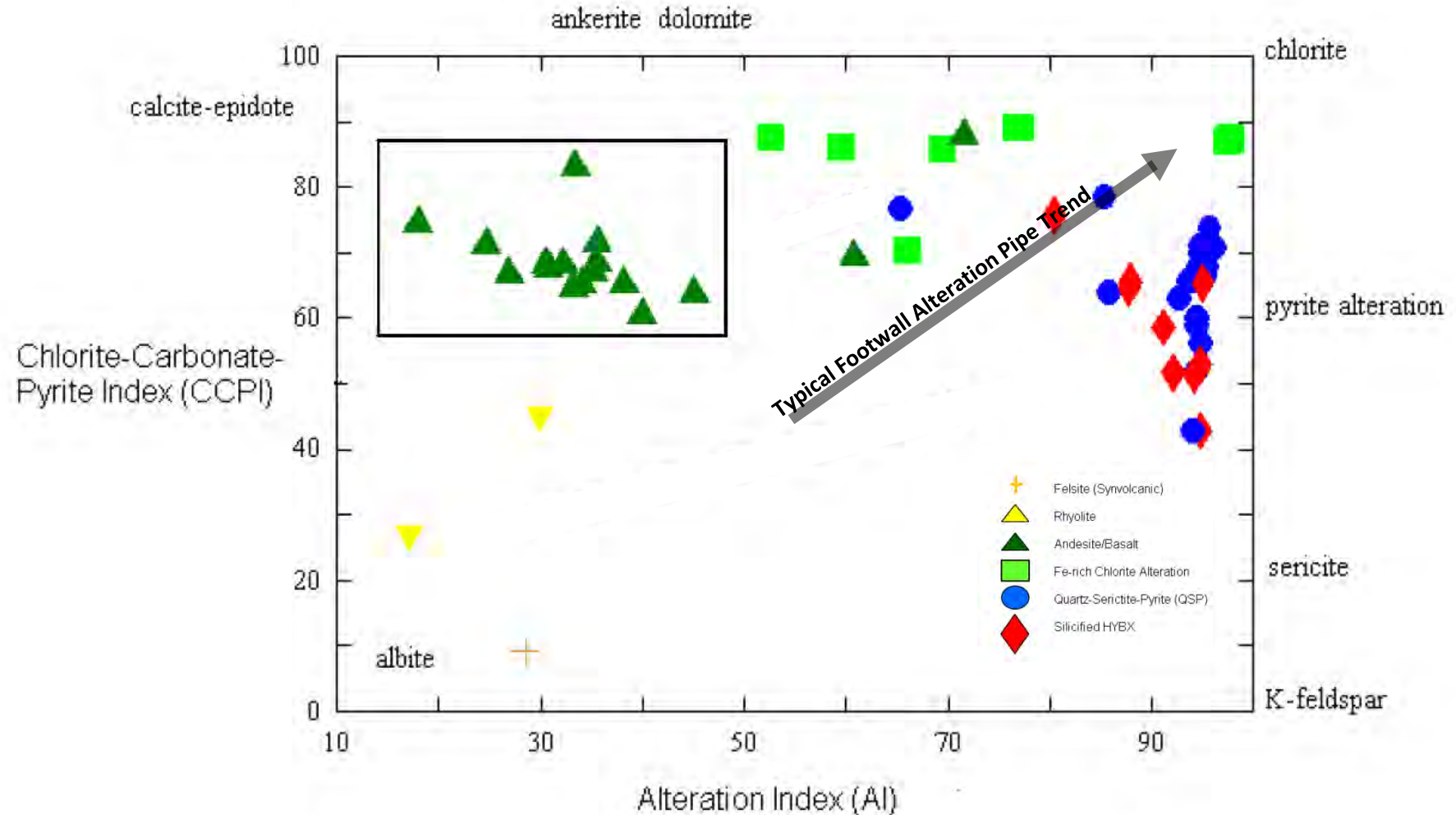
- Stratabound alteration zones are commonly developed in the footwall and extend along strike for 2-6 km
- Common alteration zonation toward ore is:
  - Ser/ Ser+Py/ Ser+Chl+Py/ Chl+Py/ Py+Qtz



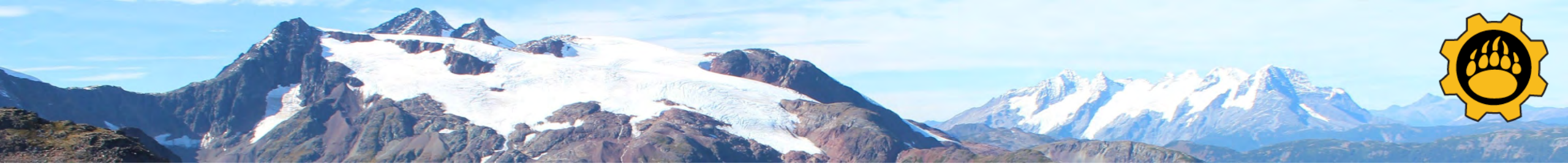


## ALTERATION BOX PLOT

- Useful in providing a vector to the centre of the alteration system
- Fe-Chlorite Alteration, QSP, and Silicified hydrothermal breccia alterations trend from unaltered equivalents in the west to intense alteration in the east
- Intense Na<sub>2</sub>O and CaO depletion

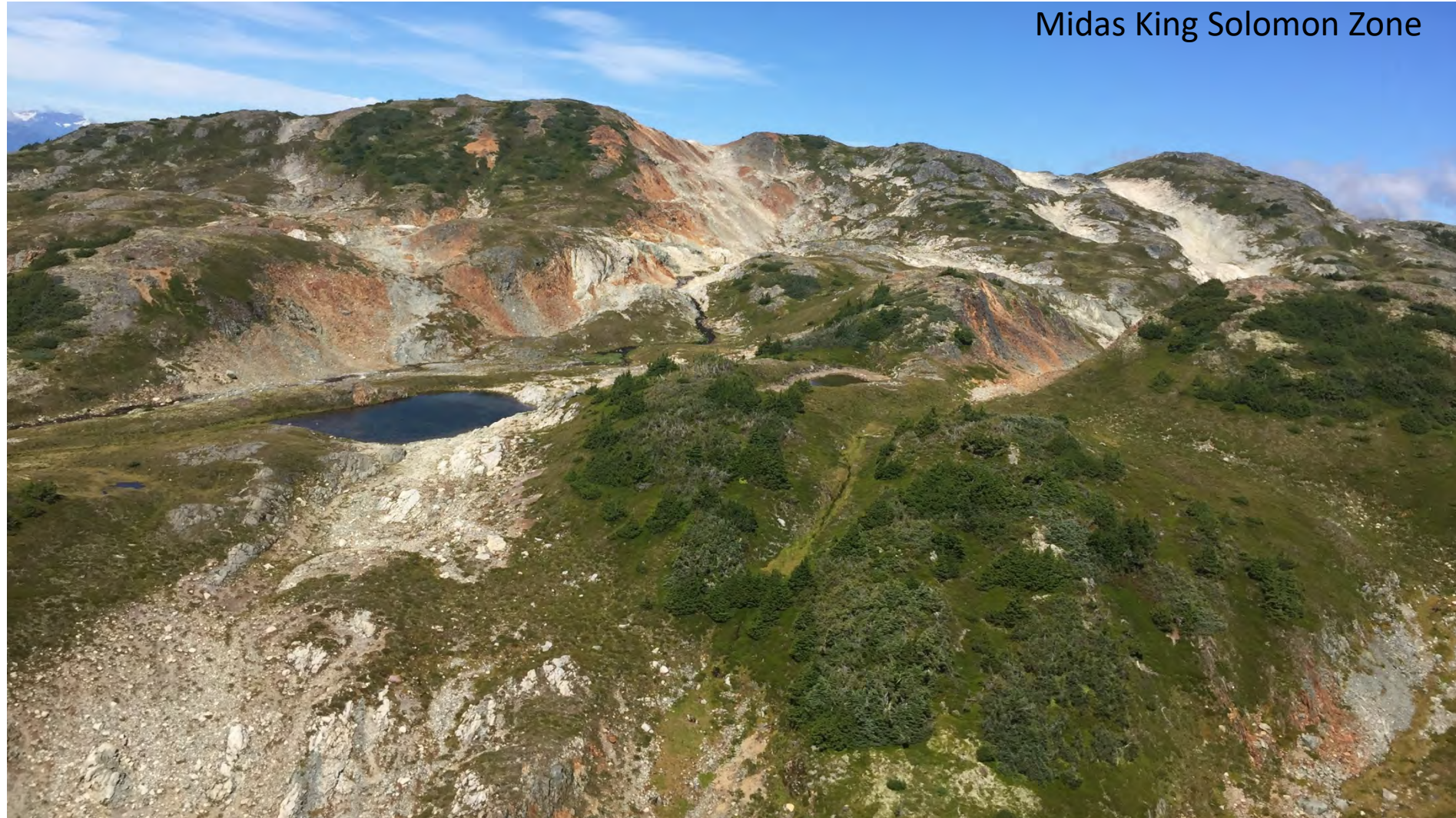






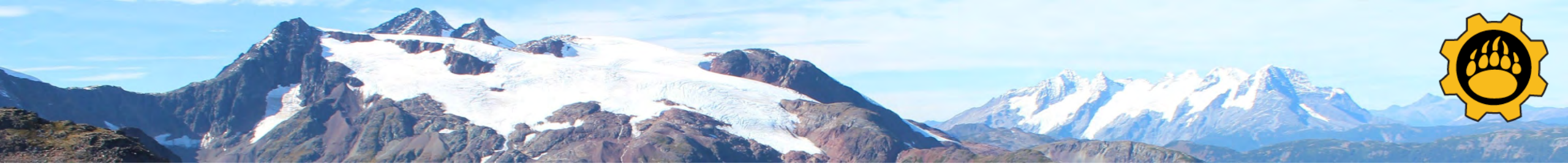
## Surficial Geochemical Criteria for VHMS

- Most Deposits have strong Pb soil anomalies and Zn-Cu dispersed anomalies
- Gossan Trace Elements:
  - Au, Se, Te, As, Sb, Bi, Cd, In, Tl, Hg, Sn, Ba
- Geochemical signature points to new target areas for drilling



Midas King Solomon Zone





## Midas Summary – Key VHMS Indicators

### Stratigraphy

- Andesite and Rhyolites
- Mississippian in age



### Alteration

- Fe-rich Chlorite
- Quartz-sericite-pyrite
- Silicification



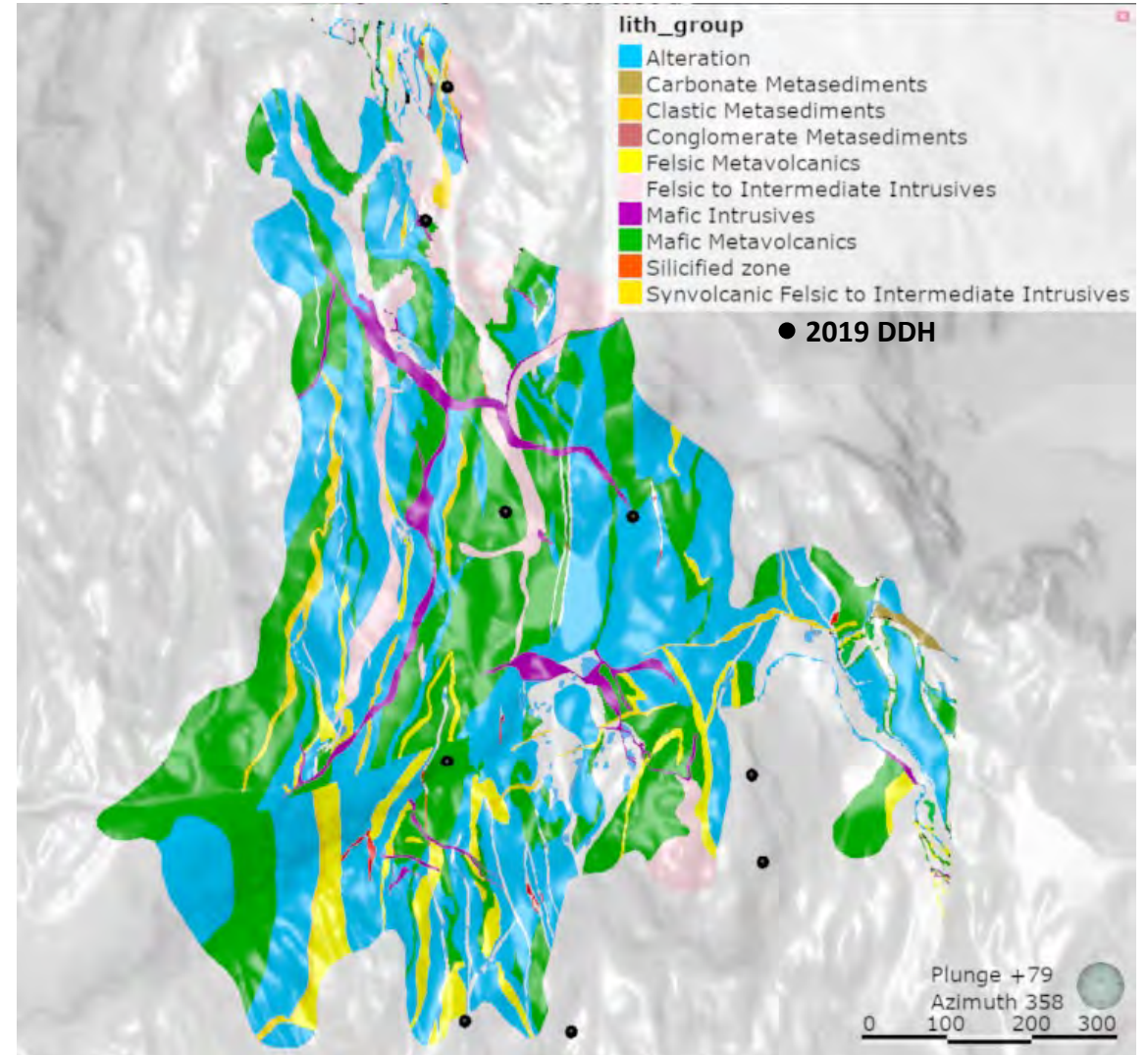
### Geophysics

- Untested chargeability and resistivity anomalies



### Geochemistry

- Widespread Zn signature with secondary Au, Ag, Pb, Cu
- Trace element signature



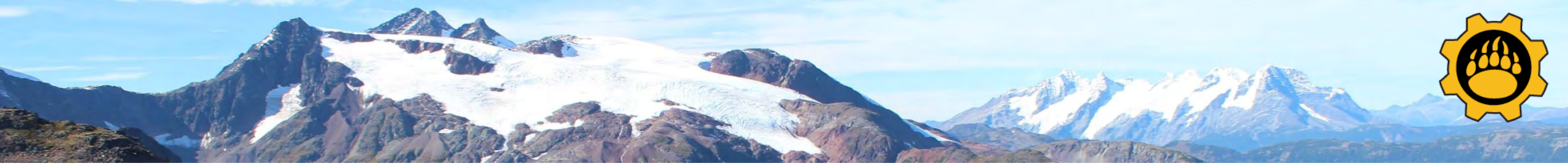




## Midas Property Summary, the next Eskay Creek?

- Based on the data we have now Juggernauts Exploration Team believe some of the best targets remain untested. **Eskay Creek** was discovered in 1988. The 109<sup>th</sup> drilling hole of Stikine Resources and Calpine Resources' joint venture hit the jackpot with a content of 27.2 g/t Au (gold) and 30.2 g/t Ag (silver) on 208 m. This mine had Canada's richest content with Au 49 g/t, Ag 2406 g/t, lead 3.2% and zinc 5.2%. Obviously, Stikine's stock price skyrocketed, going **from \$0.30 to \$64 within a year before the company was bought by a major player.**
- Joanne Nelson from the BCGS stated in her report on Juggernauts website ([M. McKeown, J. Nelson and R. Friedman](#)) located on page 113 that the sub showing and Gazelle demonstrates Mineralization indicative of a VHMS deposit that has been discovered in an intensely-altered body within the Mt Attree volcanics.
- Results to date through drilling have substantiated this with the holes closest to East Creek fault MD-19-21 displayed textures consistent with VHMS including a 0.5m interval of semi massive to massive pyrite from 47 to 47.5m containing 0.213 g/t Au with 6.03 g/t Ag and 0.368% Cu hosted within strongly sericite to silica altered rock. Several targets remain untested on this project. Also the most easterly collared drill hole in 2018 hole MD-18-16 intersected 35 m Au, Ag, Cu and Zn mineralization pointing to the close-by East Creek fault (Gazelle showing area) as having good VHMS potential.

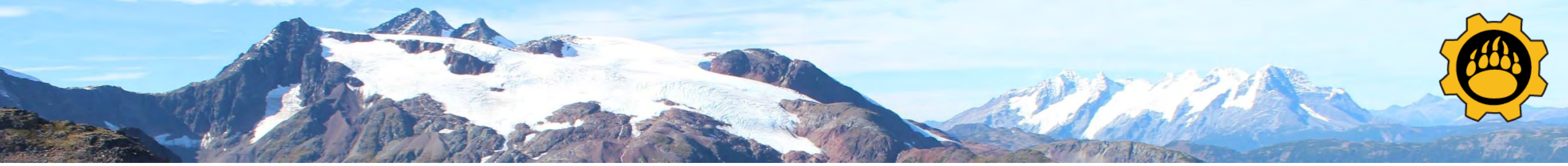




# **GOLDSTAR PROPERTY**

**GOLDSTAR VIDEO 2020**





Goldilocks  
W496863

1 m chip sample  
**24.55 gpt AuEq**

All disclosure of a scientific nature was prepared  
by or under the supervision of Rein Turma, P.Geo.,  
who is a qualified person as defined by NI-43-101.



**The Gold Star Property is situated on the central coast of BC and is located approximately 5.5 km from logging access roads and lies within 4.5 km of tidewater.**

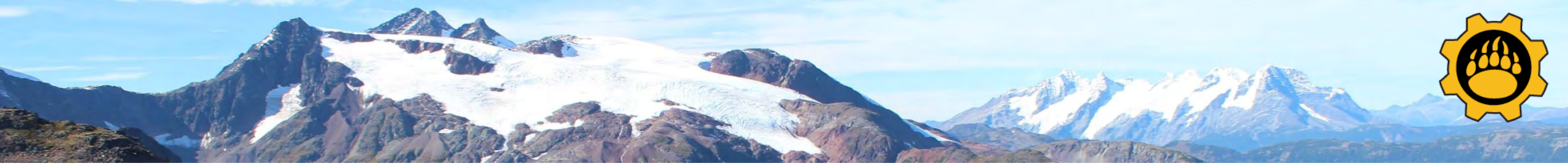
**Goldilocks Zone Drill Ready:**

- Goldilocks Zone is demarked by multiple outcrops that daylight in glacial talus containing high-grade gold and polymetallic mineralization with grab samples assaying up to 40 g/t AuEq.
- The zone is defined by veining and altered host rock over an area of 190m by 20m and 160m vertical relief that remains open.
- To date 84% of samples taken assayed greater than 1.0 g/t gold confirming the continuity of the widespread gold mineralization.

[\(Link to image\)](#)

- 2019 Channel Cut within the Goldilocks zone consisted of a 3.75m cut to partially test a 10.5m wide section of exposed outcrop. Assays returned 7.86 g/t AuEq over 3.75m true width. This channel started in 9.01 g/t AuEq and ended in 10.79 g/t AuEq leaving the zone open. This zone also contains gold mineralization confirmed in the host rock (pyritic chlorite schist) that assayed 1.13 g/t AuEq over a 1-meter interval within the 3.75-meter channel. [\(Link to new 2019 Video\)](#)





# EMPIRE PROPERTY

[EMPIRE VIDEO](#)



**EMPIRE PROPERTY  
ZONES AND TRENDS**

**INCA TREND**

Assays from bedrock grab samples up to:  
16.4 grams per tonne Gold  
(0.52 ounces per ton Gold)  
36875 grams per tonne Silver  
(1180 ounces per tonne Silver)  
27.6 per cent Copper  
30 per cent Zinc  
34 per cent Lead

Recent glacial recession has opened up  
previously covered area revealing newly  
exposed mineralization never seen before

Olympus  
Showing

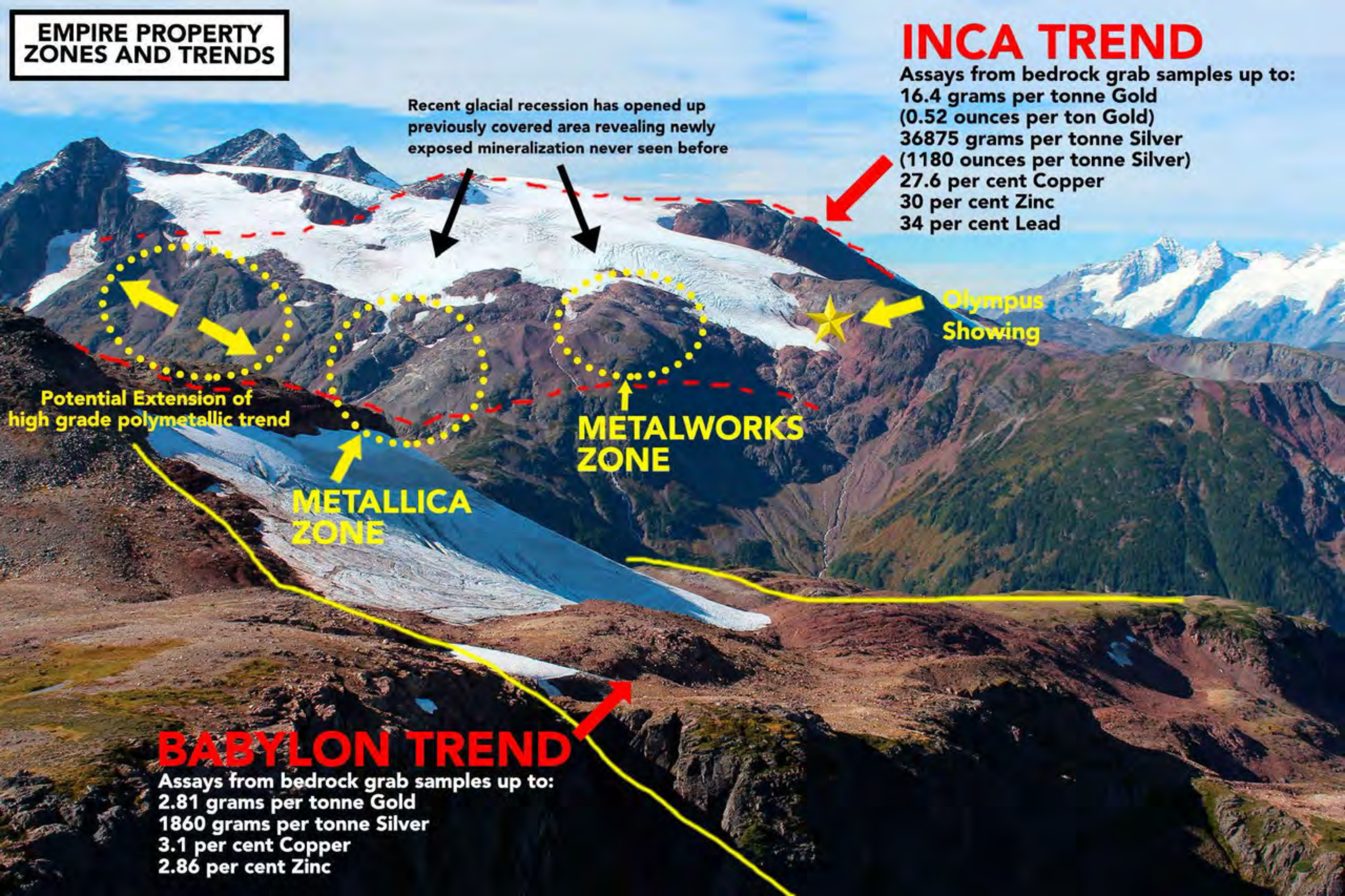
METALWORKS  
ZONE

METALLICA  
ZONE

Potential Extension of  
high grade polymetallic trend

**BABYLON TREND**

Assays from bedrock grab samples up to:  
2.81 grams per tonne Gold  
1860 grams per tonne Silver  
3.1 per cent Copper  
2.86 per cent Zinc

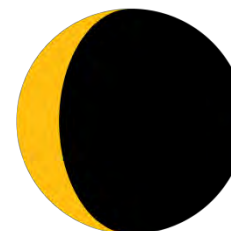






## PROJECT GENERATOR MODEL

- **Juggernaut also owns a 20% interest in the DSM syndicate**
- The DSM syndicate is a **project generator** focused on original discovery resulting from **glacial and snowpack recession**.
- **DSM management**, exploration, and technical teams have **over 200 years of combined experience** with a proven track record of success
- Members of the DSM Exploration team have been recognized by their peers in the industry for several significant mineral discoveries over the last 30 years, including some that have become world class mines.
- The project generator model allows for the potential of **ongoing cash and stock payments to lower dilution for Juggernaut shareholders**
- The **project generator model reduces risk** for shareholders of Juggernaut by giving them exposure to 4 new precious metal discoveries *“potential farm team”*



**DSM:SYNDICATE**  
ON TRACK FOR DISCOVERY





TSX-V: JUGR  
FSE: 4JE  
OTCQB: JUGRF

For additional information on any of these properties please contact:

**Dan Stuart**

CEO and President, Director  
Dan@juggernautexploration.com

**Juggernaut Exploration Ltd**

300 – 1055 West Hastings Street,  
Vancouver, BC V6E 2E9

Telephone: 604-559-8028  
Fax: 604-684-6024



<https://juggernautexploration.com>





## ADDITIONAL INFORMATION

Rein Turna, P. Geo. is the qualified person as defined by National Instrument 43-101, for Juggernaut Exploration Ltd. projects, and supervised the preparation of, and has reviewed and approved, the technical information in this release. Further information regarding Juggernaut's Goldstandard, Goldstar, Midas and Empire properties can be sourced on-line at [www.juggernautexploration.com](http://www.juggernautexploration.com), or by contacting Dan Stuart at 604-559-8028.

All rock, channel and talus fine samples were crushed and pulverized at ALS Canada Ltd.'s lab in Terrace, BC or in Reno Nevada. ALS is either Certified to ISO 9001:2008 or Accredited to ISO 17025:2005 in all of its locations. The resulting sample pulps were analyzed for gold by fire assay in Reno, Nevada or in Vancouver, BC. The pulps were also assayed using multi-element aqua regia digestion at ALS Canada Ltd.'s lab in Vancouver, BC. The silt samples were sieved and assayed at ALS Canada Ltd.'s lab in Vancouver, BC. The coarse reject portions of the rock, channel and talus fine samples, as well as the pulps, were shipped to J2 Syndicate's storage facility in Terrace, BC. The silt samples were disposed of after analysis. All samples were analyzed using ALS Canada Ltd.'s assay procedure ME-ICP41, a 1:1:1 aqua regia digestion with inductively-coupled plasma atomic emission spectrometry (ICP-AES) or inductively-coupled plasma mass spectrometry (ICP-MS) finish for 35 elements as well as the Au-AA24 lead-collection fire assay fusion procedure with atomic absorption spectroscopy (AAS) finish. Any results greater than 100 ppm for silver or 10,000 ppm copper, lead and zinc were additionally assayed using ALS's OG46 method particular to each element. This method used an HNO<sub>3</sub>-HCl digestion followed by ICP-AES (or titrimetric and gravimetric analysis). Gold values of greater than 10 ppm Au were assayed by the Au-GRA22 method which includes a fire-assay fusion procedure with a gravimetric finish. Blanks and duplicates QA/QC samples were inserted into channels sample laboratory batches. Additionally, and 10% sub-sample of pulp and reject material was sent to Activation Laboratories in Ancaster Ontario, for check-analysis.

The reader is cautioned that grab samples are spot samples which are typically, but not exclusively, constrained to mineralization. Grab samples are selective in nature and collected to determine the presence or absence of mineralization and are not intended to be representative of the material sampled.