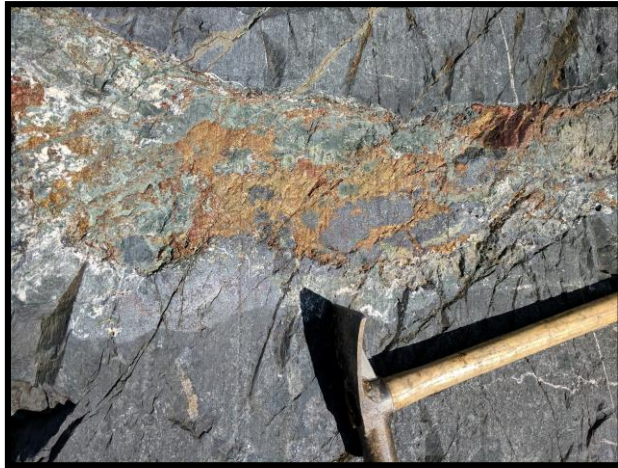


TSX-V: JUGR  
Frankfurt: 4JE



ON TRACK FOR DISCOVERY



# FORWARD LOOKING STATEMENT

This presentation may contain forward-looking statements, including management's assessments of future plans & operations, expectations of future production, cash flow & earnings. These statements are based on current expectations that involve a number of risks & uncertainties, which could cause actual results to differ materially from those anticipated.

Forward-looking statements may be identified by the use of words such as “believes”, “anticipates”, “expects”, “estimates”, “may”, “could”, “would”, “will”, or “plan”. Since forward looking statements are based on assumptions and address future events and conditions, by their very nature they involve inherent risks and uncertainties.

Actual results relating to, among other things, results of exploration, reclamation, capital costs, and the company's financial condition and prospects, could differ materially from those currently anticipated in such statements for many reasons such as but not limited to; changes in general economic conditions and conditions in the financial markets; changes in demand and prices for the minerals the Company expects to produce; litigation, legislative, environmental and other judicial, regulatory, political and competitive developments; technological and operational difficulties encountered in connection with the Company's activities; and changing foreign exchange rates and other matters discussed in this presentation.

Persons should not place undue reliance on the Company's forward-looking statements. Further information regarding these and other factors, which may cause results to differ materially from those projected in forward-looking statements, are included in the filings by the Company with securities regulatory authorities. The Company does not assume any obligation to update or revise any forward looking statement that may be made from time to time by the Company or on its behalf, except in accordance with applicable securities laws, whether as a result of new information, future events or otherwise.

The TSX Exchange has not reviewed and does not accept responsibility for the adequacy or accuracy of the contents of this presentation, that has been prepared by management.

This presentation does not constitute an offer to sell or a solicitation of an offer to buy any securities of the Company in any jurisdiction. Any such offer or solicitation will be made only in accordance with all applicable laws. The common shares of the Company will not be and have not been registered under the United States Securities Act of 1933, as amended, and may not be offered or sold in the United States, or to a U.S. person, absent registration or applicable exemption therefrom.



## CORPORATE OVERVIEW

- Juggernaut Exploration Ltd – **A New Ground Floor Opportunity**
- Focused on Northwestern British Columbia With Exposure to Over 8 Precious and Base Metal Projects
- **Seasoned Team:** 30 Years of a Proven Track Record of Discovery Culminating in ~1 Billion Dollars of Value
- **100 % Option on the Midas Property**
- **100 % Option on the Empire Property**
- **Rapid Glacial and Snowpack Abatement** resulting in discoveries



## BUILDING SHAREHOLDER WEALTH

- Juggernaut is building shareholder wealth by **systematically exploring** its 100 percent optioned **Midas and Empire properties**.
- **Juggernaut's management**, exploration and technical teams have **over 200 years of combined experience** with a proven track record of success.
- Members of the Juggernaut Exploration's team have been recognized by their peers in the industry for several significant mineral discoveries over the last 30 years.
- **Juggernaut Exploration Ltd. owns a 20 percent stake in the DSM Syndicate**, a successful project generator in British Columbia focused on areas of recent glacial and snowpack abatement.



# MANAGEMENT AND DIRECTORS

## **Dan Stuart**, President & CEO, Director

- >20 years of capital market experience
- >100 million dollars raised in the natural resource sector
- Has raised capital for several private mineral syndicates, YCS, B2, J2, DSM
- Institutional clients in both the Americas and Europe

## **William Jung**, Director & CFO

- 35 years of experience in finance and business
- Former chartered accountant involved in management of companies on the TSX
- >25 years experience in the management of companies publicly listed on the TSX

## **Jim McCrea**, Director

- 25 years experience in exploration and mining
- 20 years in mineral resource estimation including Cumberland Resources
- Ore body modelling and resource estimation for the successfully targeted take over company Cumberland Resources Ltd. By Agnico-Eagle Mines Ltd.

## **Chris Verrico**, Director

- >20 years of managing mineral exploration projects in BC, Yukon, Alaska, Nunivut
- Served as a director and officer of numerous start-up companies, most of which became publicly traded companies
- Experience as a contractor with extensive northern rural-remote infrastructure construction and contract mining projects

## **Peter Bryant**, Director

- 45 years of experience in international finance and investment banking
- Former director of investment banking with Standard Chartered Group
- Worked for Hill Samuel Group and Guinness Mahon Holding's, two of the prestigious merchant banking house in London, England
- Previously, Director of investment banking with the Standard Chartered Group, Vancouver

# SPECIAL ADVISORS AND CONSULTANTS

## **Bill Chornobay**

- >30 years proven track record of discovery resulting in over ~1 billion dollars in value

## **Stephen Roach**, P.Geo., B.Sc.

- Mr. Roach is an exploration geologist with over 40 years in gold and base metal experience working with both junior explorers and senior miners on greenfield and brownfield projects.
- He has personally discovered and has worked with geological teams in the initial discovery of many emerging deposits such as Pretium's & Seabridge Gold Sulphurets area

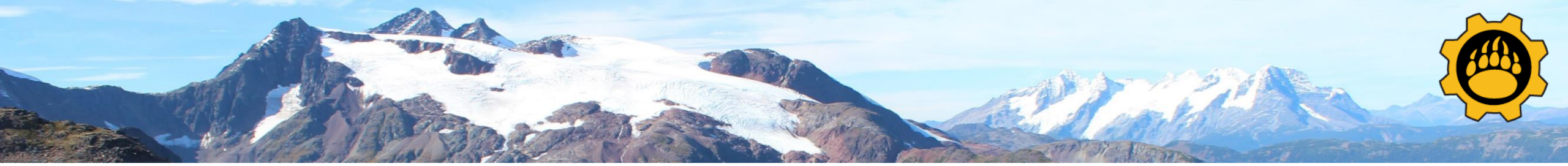


## SHARE STRUCTURE

SHARES OUTSTANDING	97,025,564
FULLY DILUTED	160,468,844
OPTIONS (weighted average \$0.29)	4,815,000
CASH FULLY DILUTED	\$22,463,159
WARRANTS @ \$0.74 (CALL @ \$1.48) EXPIRY 2020	1,087,764
WARRANTS @ \$0.64 (CALL @ \$1.00) EXPIRY 2020	3,655,114
WARRANTS @ \$0.56 (CALL @ \$1.12) EXPIRY 2021	4,224,374
WARRANTS @ \$0.50 (CALL @ \$1.00) EXPIRY 2020	9,453,330
WARRANTS @ \$0.36 (CALL @ \$0.72) EXPIRY 2020	5,042,886
WARRANTS @ \$0.32 (CALL @ \$0.80) EXPIRY 2021	3,765,532
WARRANTS @ \$0.25 (CALL @ \$0.50) EXPIRY 2019	17,224,668
WARRANTS at \$0.08 <i>escrowed provisions</i>	
<i>oversubscribed institutionally supported financing completed December 2018</i>	\$2,277,000

## CAPITAL STRUCTURE

- No Debt
- Management, insiders, and accredited investors ~ 80%
- Strong support from institutions and miners alike
- Multiple exploration programs are fully funded for 2019



## EMPIRE PROPERTY

### Property Overview

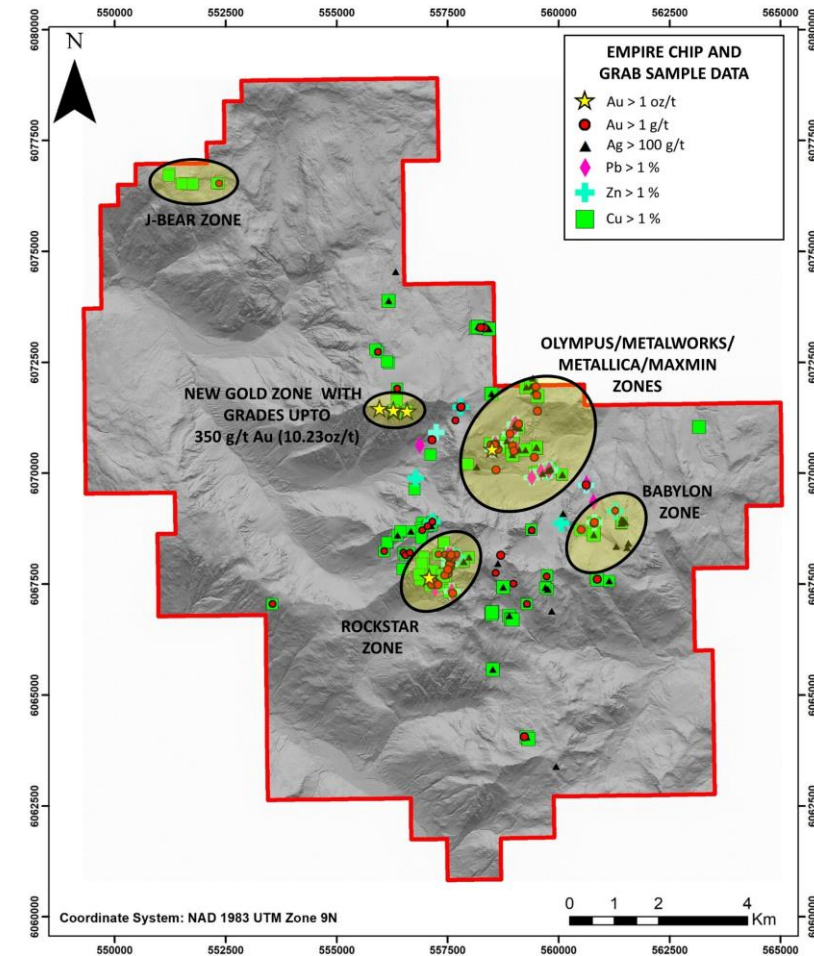
- **High-grade widespread gold and polymetallic mineralization** confirmed at Max Min, Metalworks, Metallic, Rockstar, and Olympus targets indicate the presence of a large hydrothermal feeder system at depth

### Rockstar Zone

- 2017 Rockstar channel cut in breccia contained massive to semi-massive sulphides over **6.02 metres** containing **1.53 gpt Au, 1.38 % Cu, 0.23 % Zn, and 0.13 % Pb**
- 2018 Rockstar discovery drill hole EM-18-08 intersected **1.37 g/t Au, 3.25 g/t Ag, and 0.51 % Cu** (2.18 g/t AuEq) **over 15.4 metres**, remains open along strike and at depth

### 2018 Property Highlights

- Discovery of multiple new showings with chip, grab, and channel samples grading up to **350 g/t Au** (10.23 oz/t), **8090 g/t Ag** (236 oz/t), **20.9 % Cu, 10.25 % Pb, and 26.1 % Zn.**

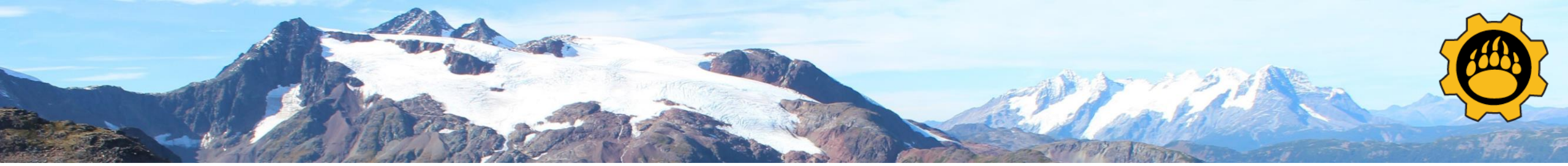


"All disclosure of a scientific nature was prepared by or under the supervision of Stephen Roach P. Geo., who is a qualified person as defined by NI-43-101."

EMPIRE PROPERTY

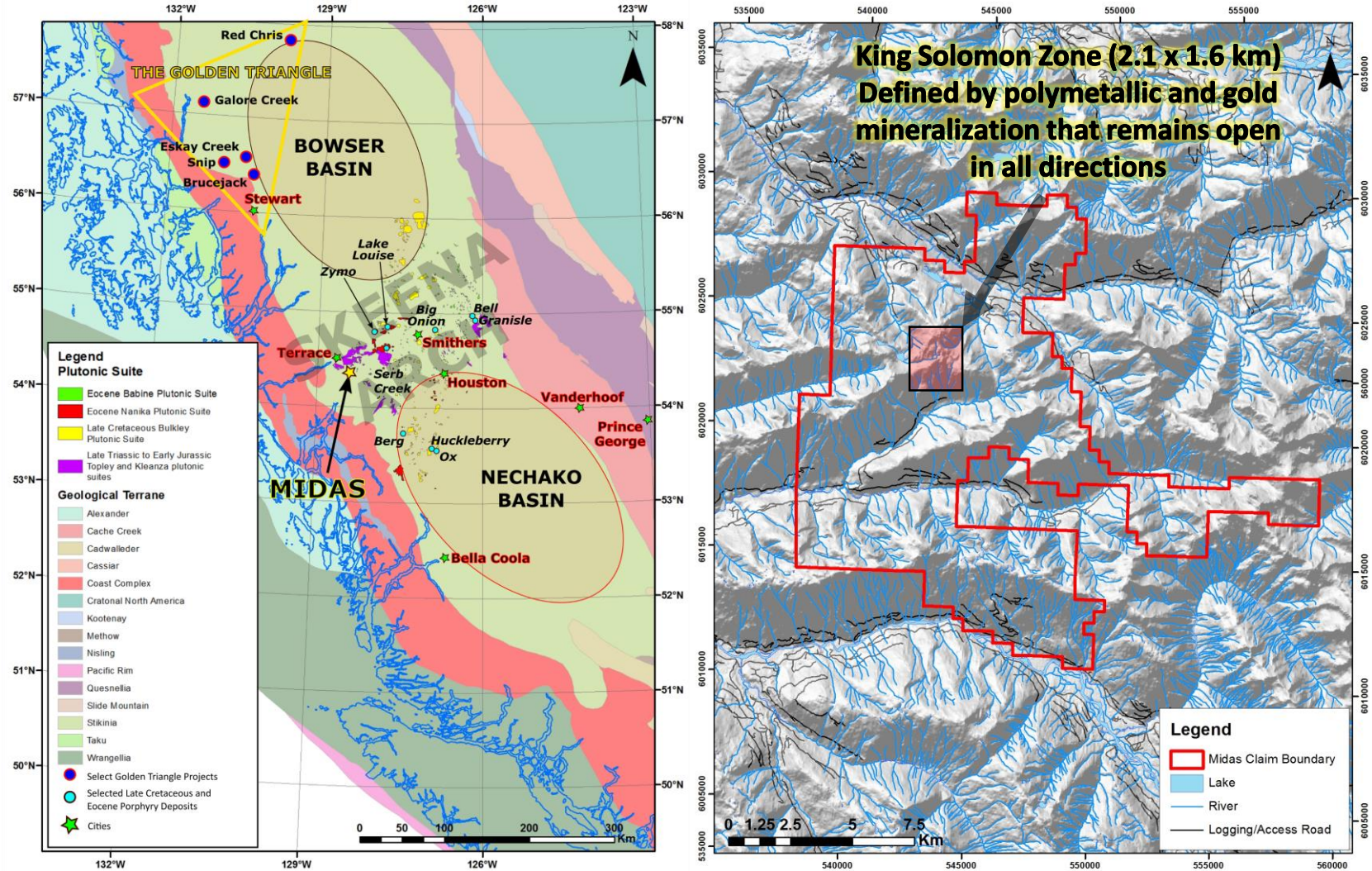


JUGGERNAUT  
EXPLORATION LTD. TSX.V: JUGR



# MIDAS PROPERTY

- The Midas Property is **16,653 ha**
  - 100 % controlled by Juggernaut
- Logging road access on property
- 14 km to major power, CN rail, and roads
- Further, 10 km to Terrace, BC and major infrastructure, and further 45 km from Kitimat deep sea port and Rio Tinto smelter
- **World class geological setting** with strong potential for VMS Eskay Creek style mineralization



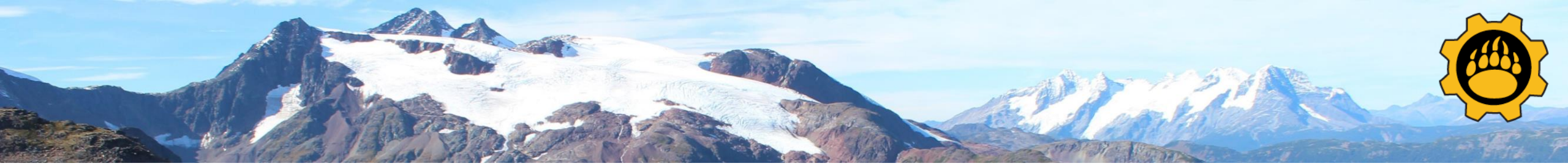




**JUGGERNAUT**

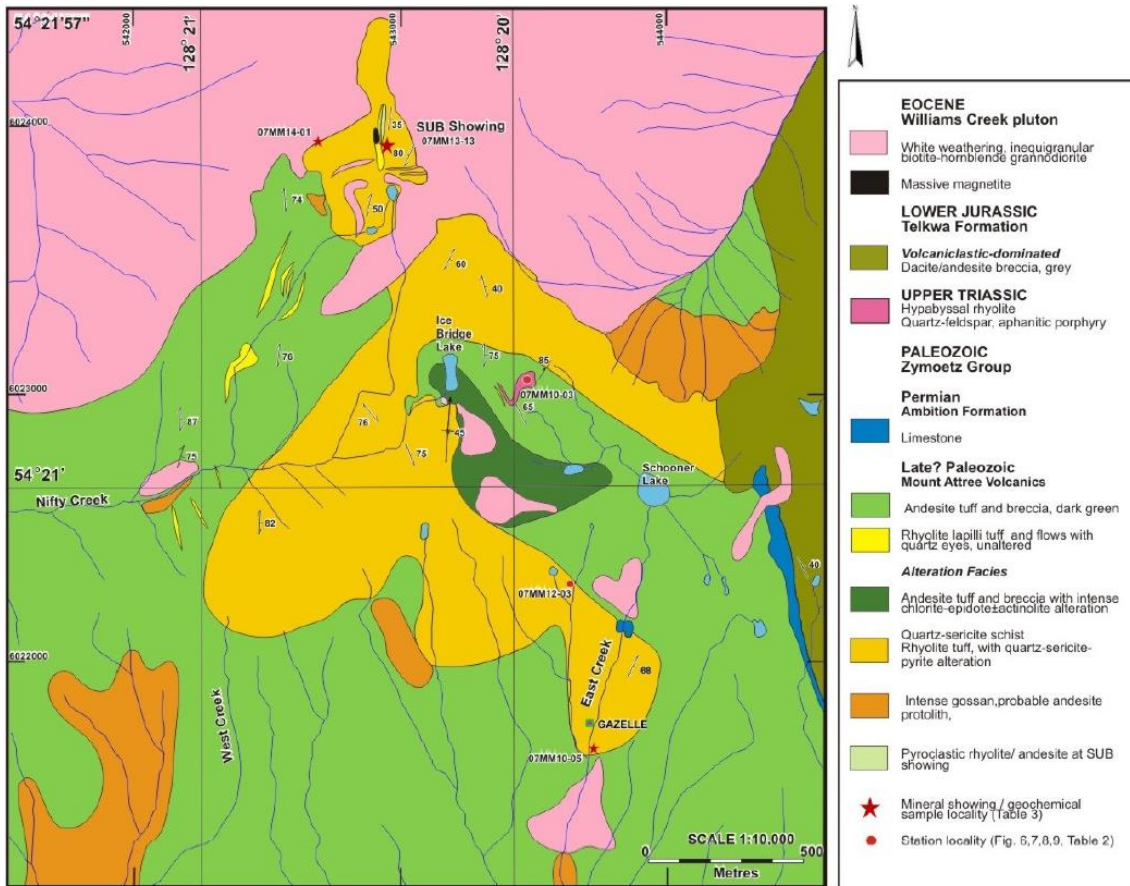
EXPLORATION LTD. TSX.V : JUGR

**MIDAS PROPERTY  
KING SOLOMON ZONE UPDATE  
[VIDEO UPDATE](#)**



## 2007 BCGS MAP by M. McKeown and J. Nelson

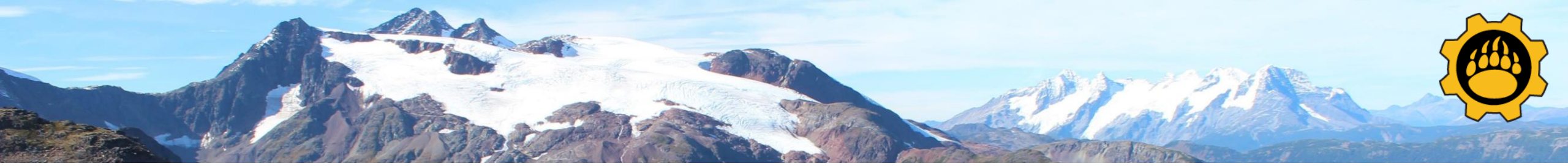
## Stratigraphy and Alteration



- Conformable sequence of layered Paleozoic felsic to intermediate volcanoclastic rocks
  - Compositionally variable sequence that consists largely of:
    1. **Andesitic flows**, tuff and breccia with
    2. **Rhyolite flows**, tuff and breccia
- Extensive, intense gossans that occur in the quartz sericite schist, as well as in the silicified, chlorite-pyrite andesite tuff.

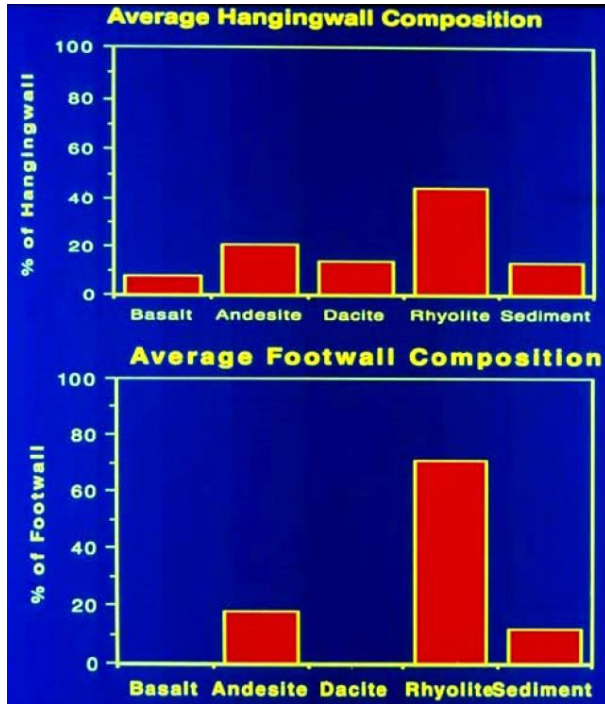
“Through regional and local mapping, the stratigraphy of Paleozoic and Jurassic volcanic rocks in the area southeast of Terrace has been clarified and a new unit that is prospective for VHMS deposits has been identified.”

*M. McKeown 2007, BCGS*

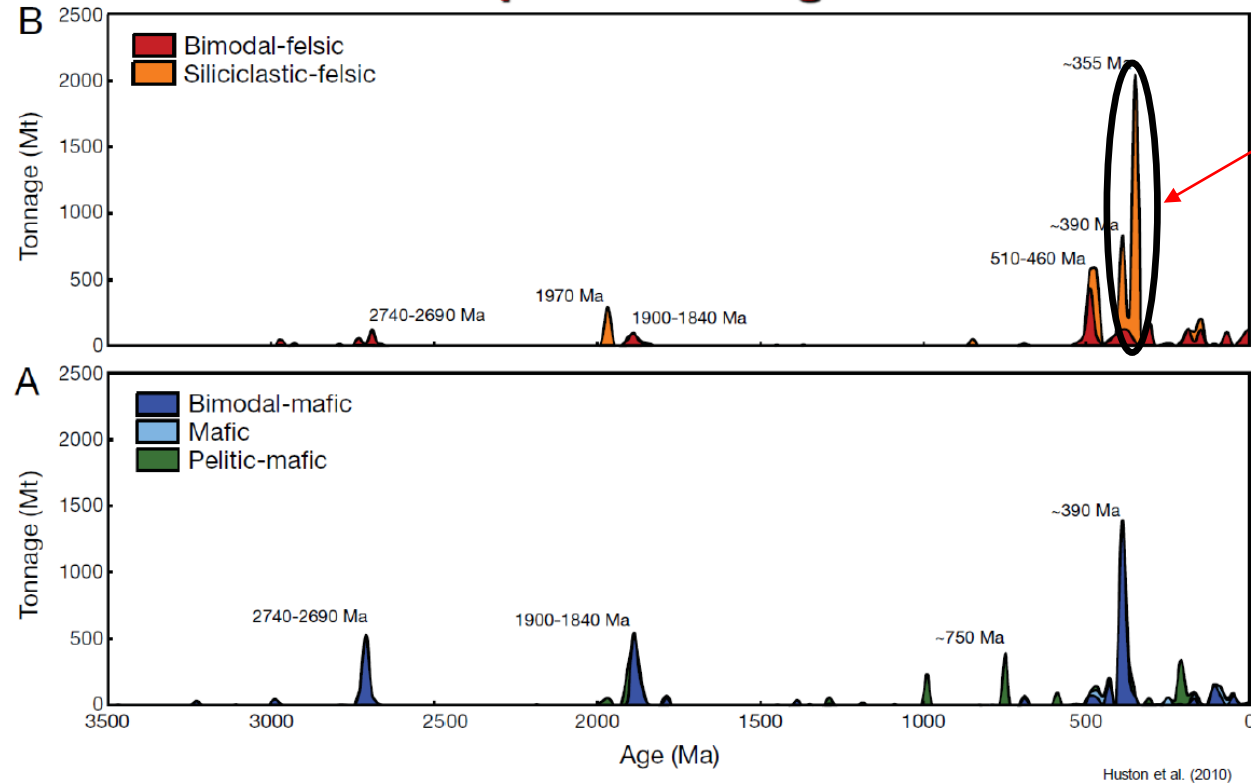


# VHMS Mineralization Potential

## VHMS Deposits through Time

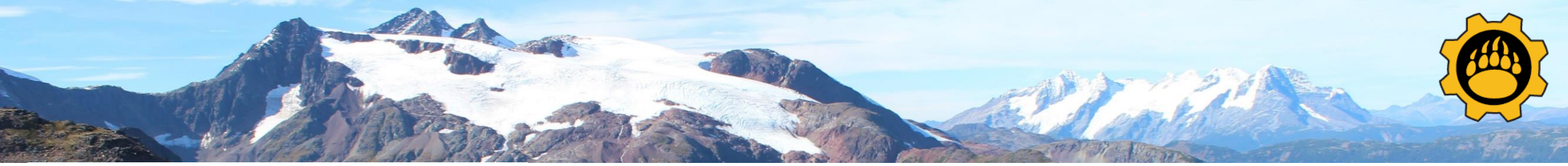


**Midas - Mt Attree Volcanics**  
Predominantly Andesite/Rhyolite

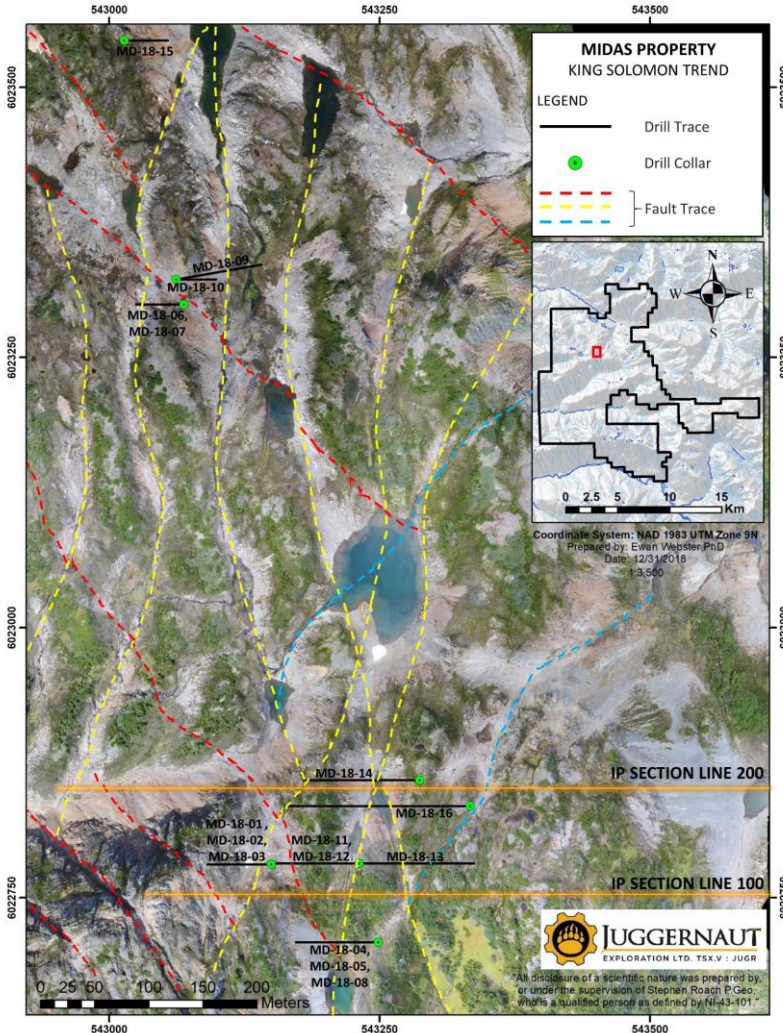


Mt Attree Volcanics  
Mississippian in age

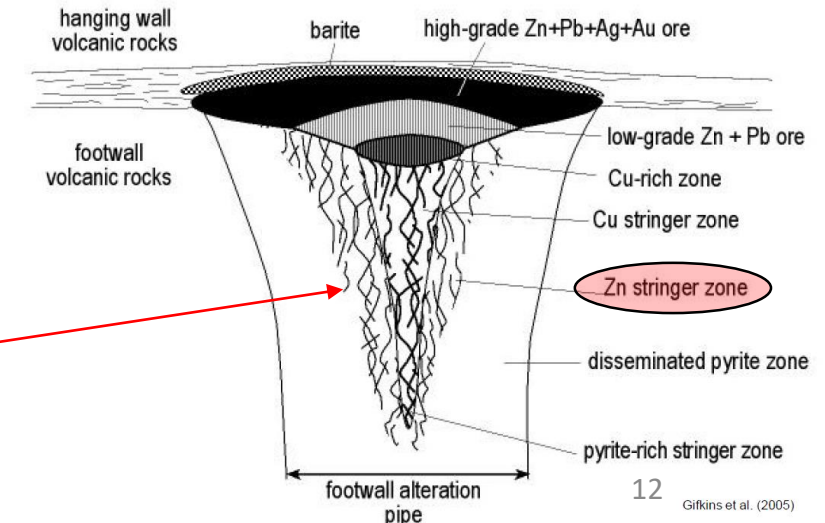
King Solomon Zone Discovery has the right age and type of rocks known to host the majority of VHMS deposits

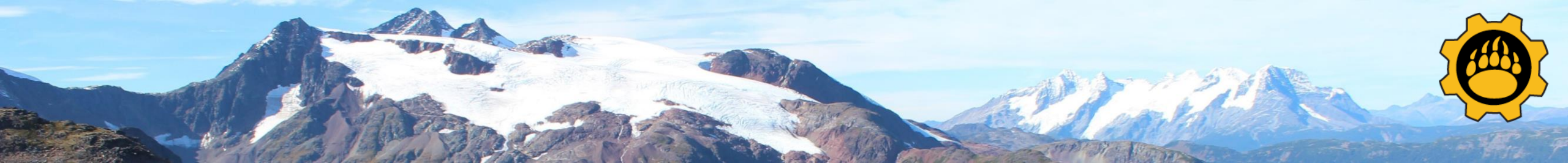


## KING SOLOMON ZONE SUMMARY



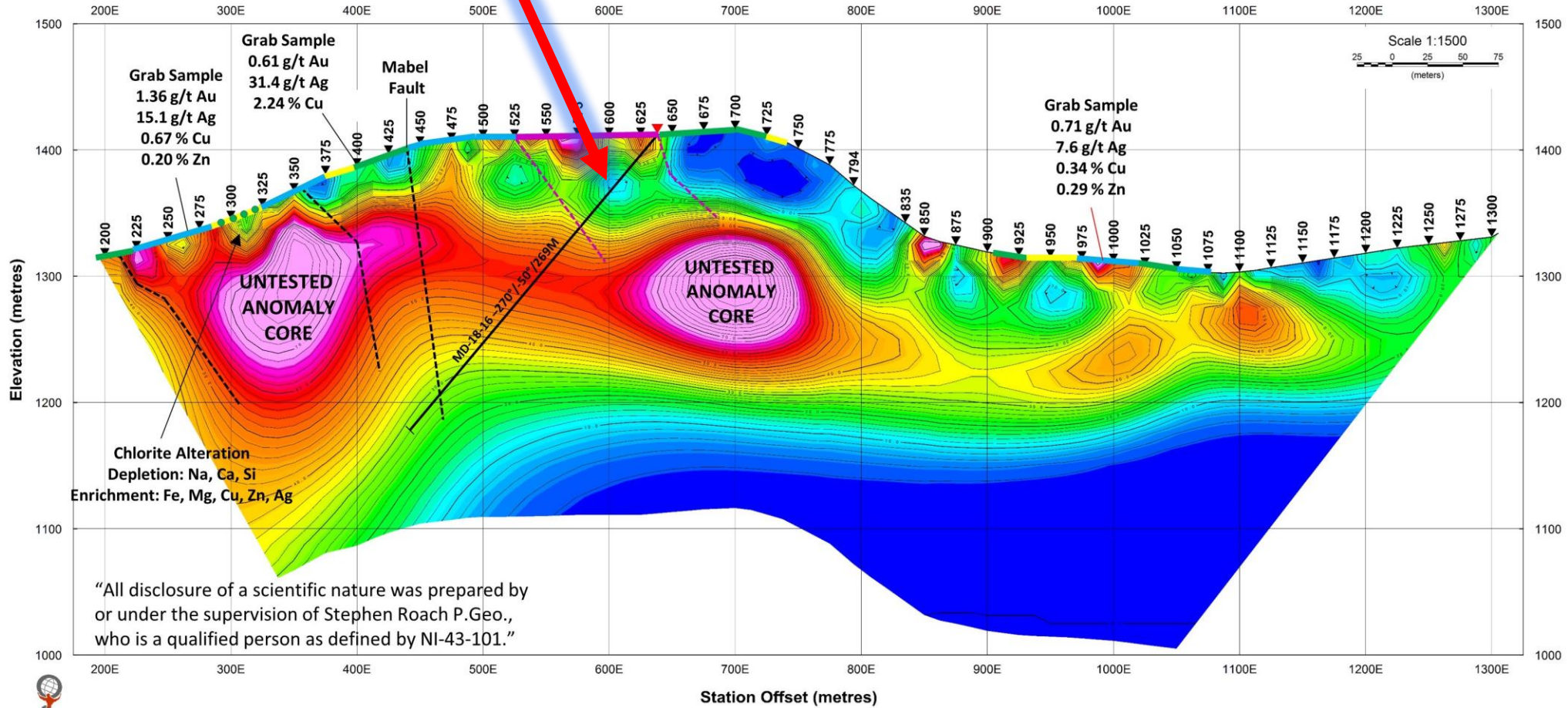
- BCGS mapped an **18 x 10 km alteration zone** of intense gossan development and quartz-sericite-pyrite alteration.
  - King Solomon Zone (2.1 x 1.6 km )** falls within the larger alteration zone.
  - Mapped a series of bimodal volcanics and sediments that was subsequently mapped in detail by JUGR senior geologist Stephen Roach.
- The 2018 mapping, geochemistry, alteration studies, and geophysics, combined with the inaugural exploratory shallow drilling, was designed to expand the understanding of the controls on mineralization and the geological model.
- 2018 Drilling Highlights
  - MD-18-08 intersected **6.85 g/t Au over 9.0 m**
  - MD-18-16 intersected **0.55 g/t AuEq over 35.35 m**
    - 0.21 Au g/t Au, 0.18 g/t Ag, 0.32 % Zn, 0.08 % Cu, 0.02 % Pb
    - Possible source of this mineralization is the intensely silicified stringer zone of a VHMS system

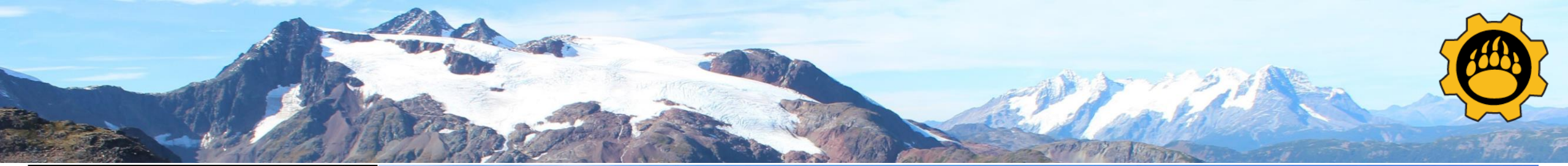




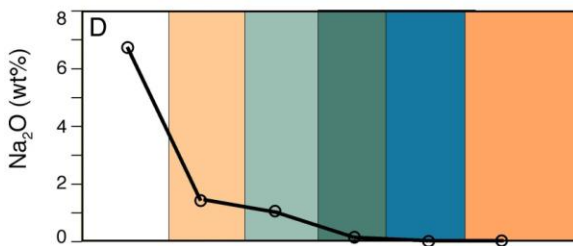
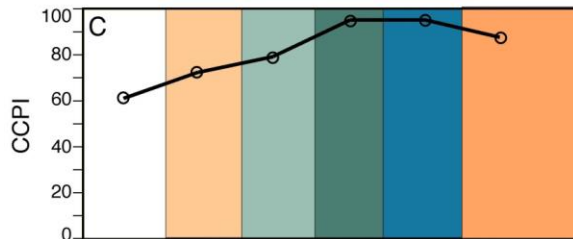
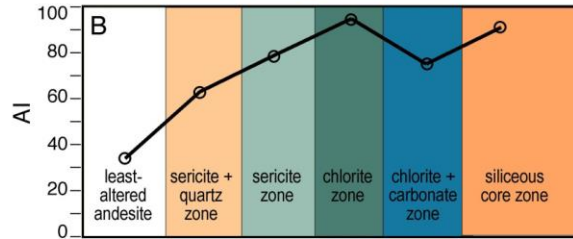
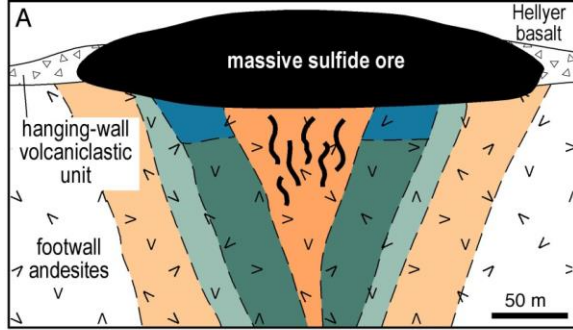
# 2018 Drill Hole MD-18-16

LINE 200N  
IP (HS referenced) Chargeability Section



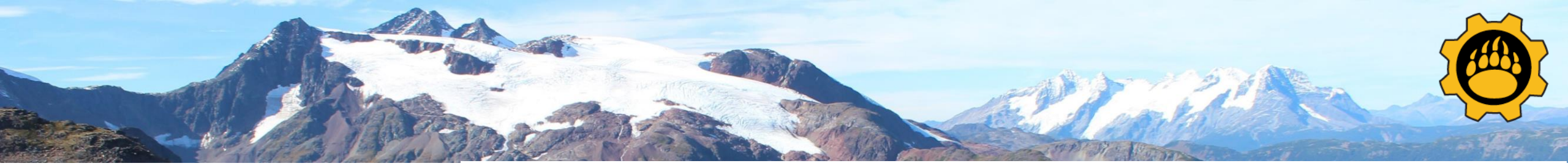


# Midas King Solomon Zone



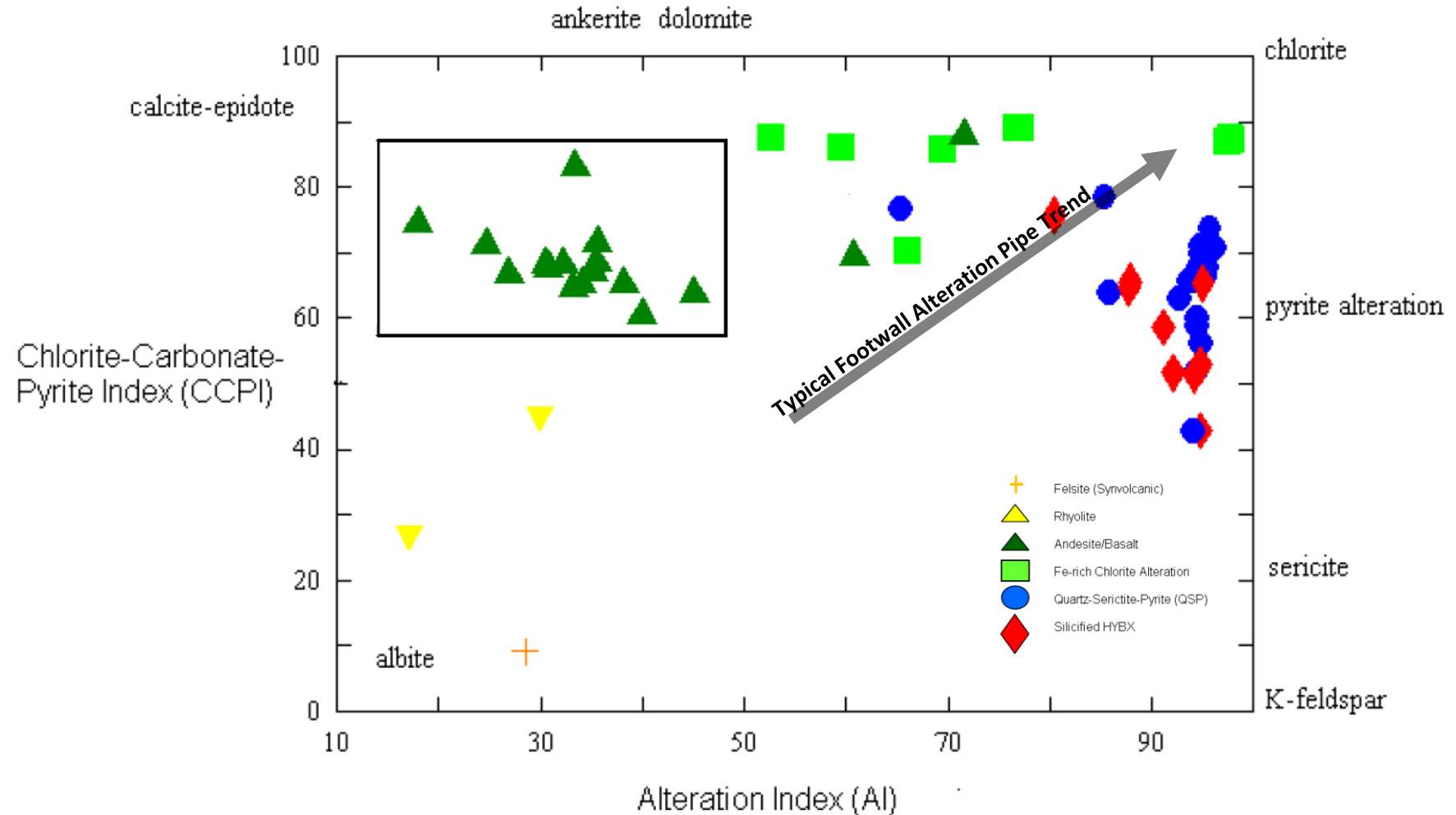
## Alteration

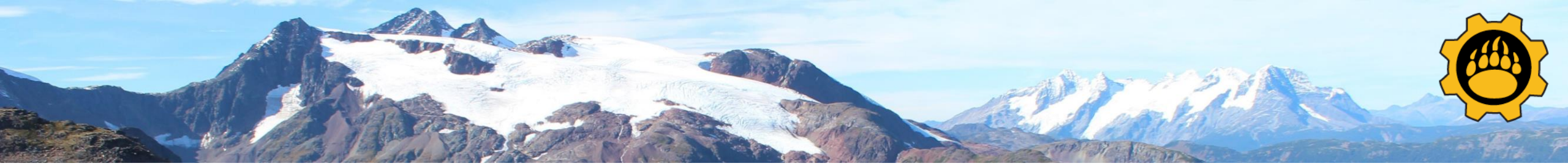
- Stratabound alteration zones are commonly developed in the footwall and extend along strike for 2-6 km
- Common alteration zonation toward ore is:
  - Ser/ Ser+Py/ Ser+Chl+Py/ Chl+Py/ Py+Qtz



## ALTERATION BOX PLOT

- Useful in providing a vector to the centre of the alteration system
- Fe-Chlorite Alteration, QSP, and Silicified hydrothermal breccia alterations trend from unaltered equivalents in the west to intense alteration in the east
- Intense  $\text{Na}_2\text{O}$  and  $\text{CaO}$  depletion





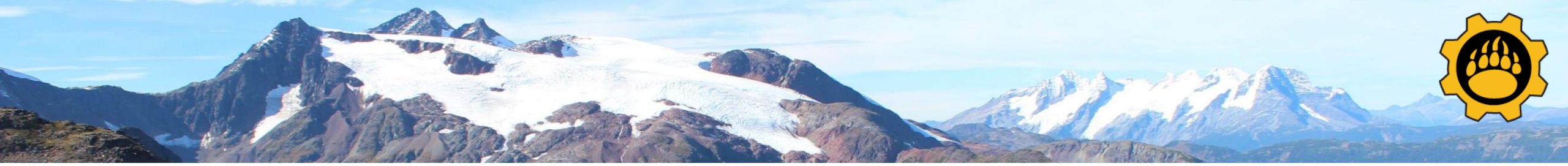
## Surficial Geochemical Criteria for VHMS

- Most Deposits have strong Pb soil anomalies and Zn-Cu dispersed anomalies
- Gossan Trace Elements:
  - Au, Se, Te, As, Sb, Bi, Cd, In, Tl, Hg, Sn, Ba
- Geochemical signature points to new target areas for 2019 drilling



Midas King Solomon Zone





## Midas Summary – Key VHMS Indicators

### Stratigraphy

- Andesite and Rhyolites
- Mississippian in age



### Alteration

- Fe-rich Chlorite
- Quartz-sericite-pyrite
- Silicification



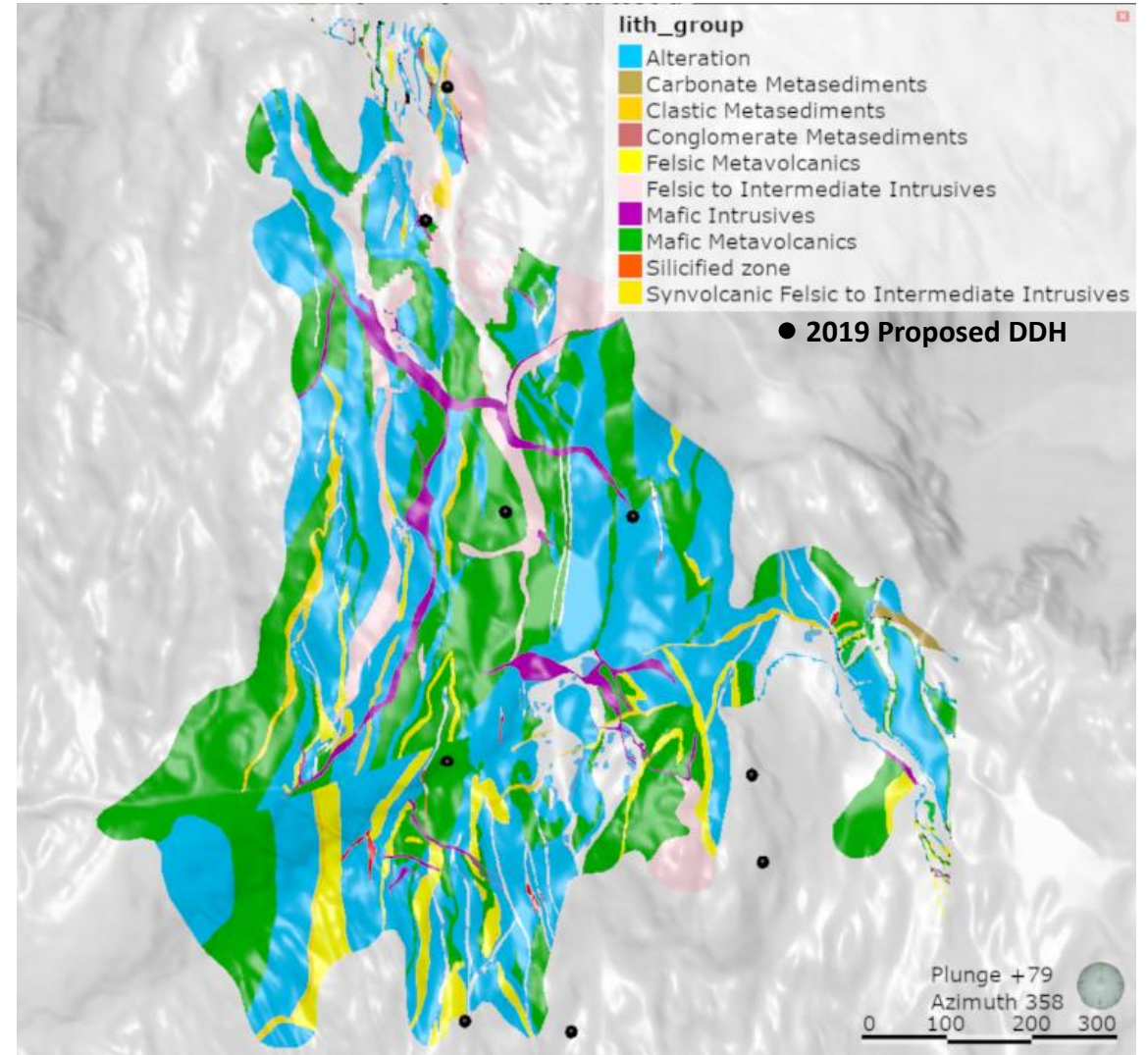
### Geophysics

- Untested chargeability and resistivity anomalies



### Geochemistry

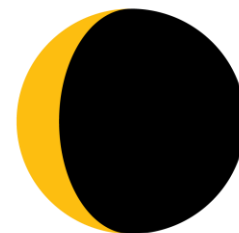
- Widespread Zn signature with secondary Au, Ag, Pb, Cu
- Trace element signature



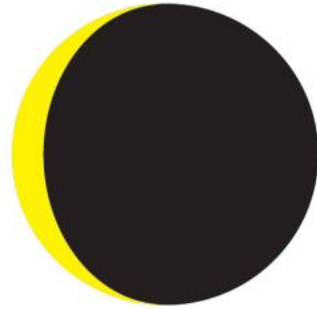


## PROJECT GENERATOR MODEL

- **Juggernaut owns a 20 % interest in the DSM syndicate**
- The DSM syndicate is a **project generator** focused on original discovery resulting from **glacial and snowpack recession**.
- **DSM management**, exploration, and technical teams have **over 200 years of combined experience** with a proven track record of success
- Members of the DSM Exploration team have been recognized by their peers in the industry for several significant mineral discoveries over the last 30 years, including some that have become world class mines.
- The project generator model allows for the potential of **ongoing cash and stock payments to lower dilution for Juggernaut shareholders**
- The **project generator model reduces risk** for shareholders of Juggernaut by giving them exposure to 6 new precious metal discoveries "*potential farm team*"



**DSM:SYNDICATE**  
ON TRACK FOR DISCOVERY



**DSM:SYNDICATE**  
ON TRACK FOR DISCOVERY

**GOLD STANDARD PROPERTY UPDATE**  
**VIDEO UPDATE**



## JUGGERNAUT HAS FIRST RIGHT OF REFUSAL (R.O.F.R) ON THE GOLD STANDARD PROPERTY

"All disclosure of a scientific nature was prepared by or under the supervision of Stephen Roach P. Geo., who is a qualified person as defined by NI-43-101."



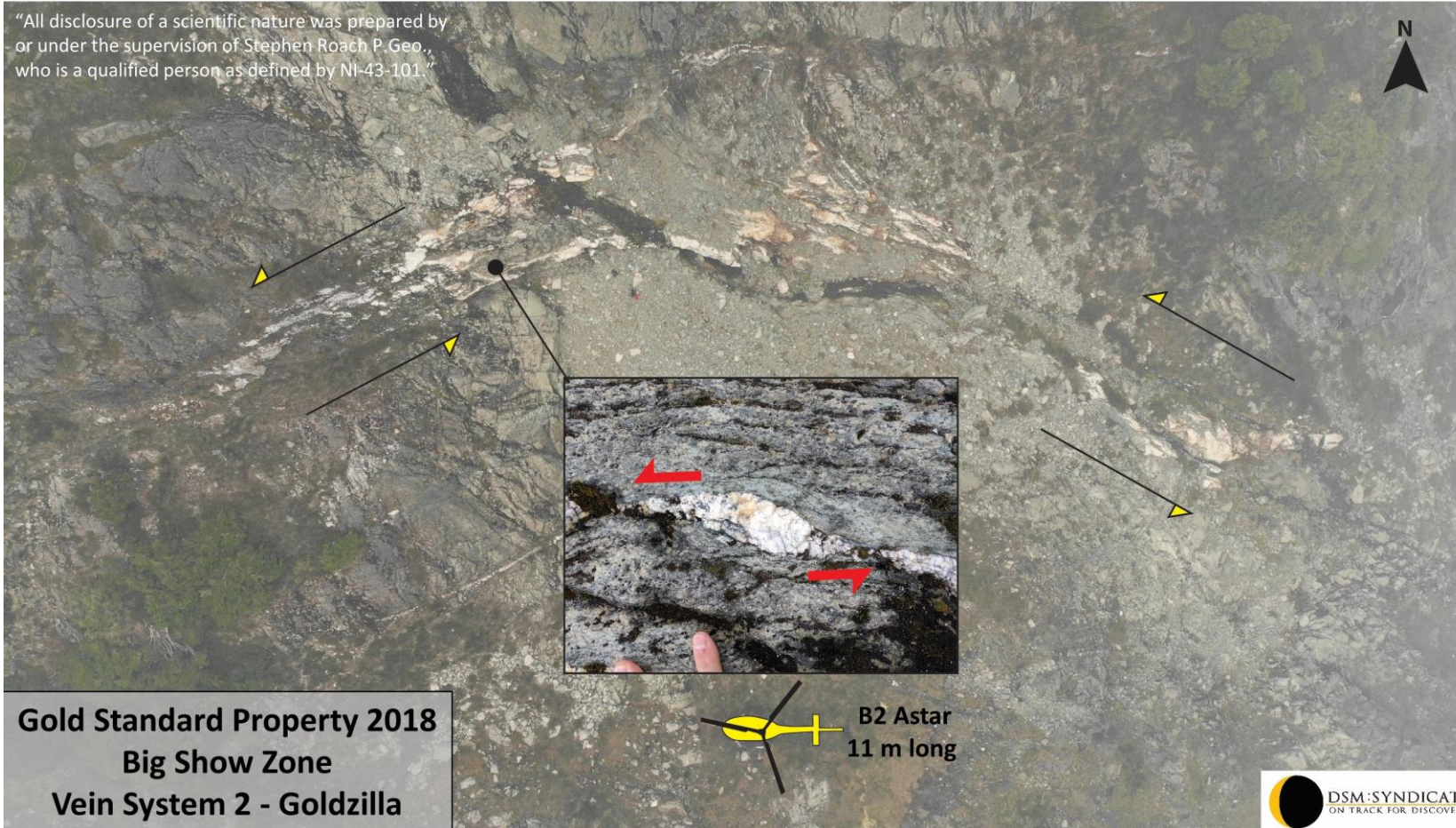
Based on the discovery of multiple new gold mineralized veins the claim block was recently expanded from 1774 Ha to **4532 Ha**.

Seven large shear zone hosted mineralized vein systems containing consistent high-grade gold mineralization have been discovered to date.

### Vein Highlights include:

- Vein system 1** (Kraken) assays up to:
  - **71.8 g/t Au** (2.1 oz/t), 64.4 g/t Ag, 72.6 g/t AuEq (0.5 Chip Sample)
- Vein system 2** (Goldzilla) assays up to:
  - **110 g/t Au** (3.21 oz/t), 934 g/t Ag, 121.8 g/t AuEq (Grab Sample)
  - 10.8 g/t Au, 85.5 g/t Ag, 11.85 g/t AuEq (2m Chip Sample)
- Vein system 3** (Leviathan) assays up to:
  - **96.8 g/t Au** (2.8 oz/t), 429 g/t Ag, 106.7 g/t AuEq (Grab Sample)
  - 26.9 g/t Au, 70.4 g/t Ag, 27.79 g/t AuEq (1.5 m Chip Sample)

Multiple other large veins were also discovered and have yet to be sampled providing for excellent additional gold potential.



Gold Standard Property 2018  
Big Show Zone  
Vein System 2 - Goldzilla

B2 Astar  
11 m long



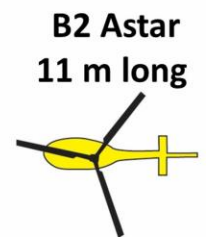
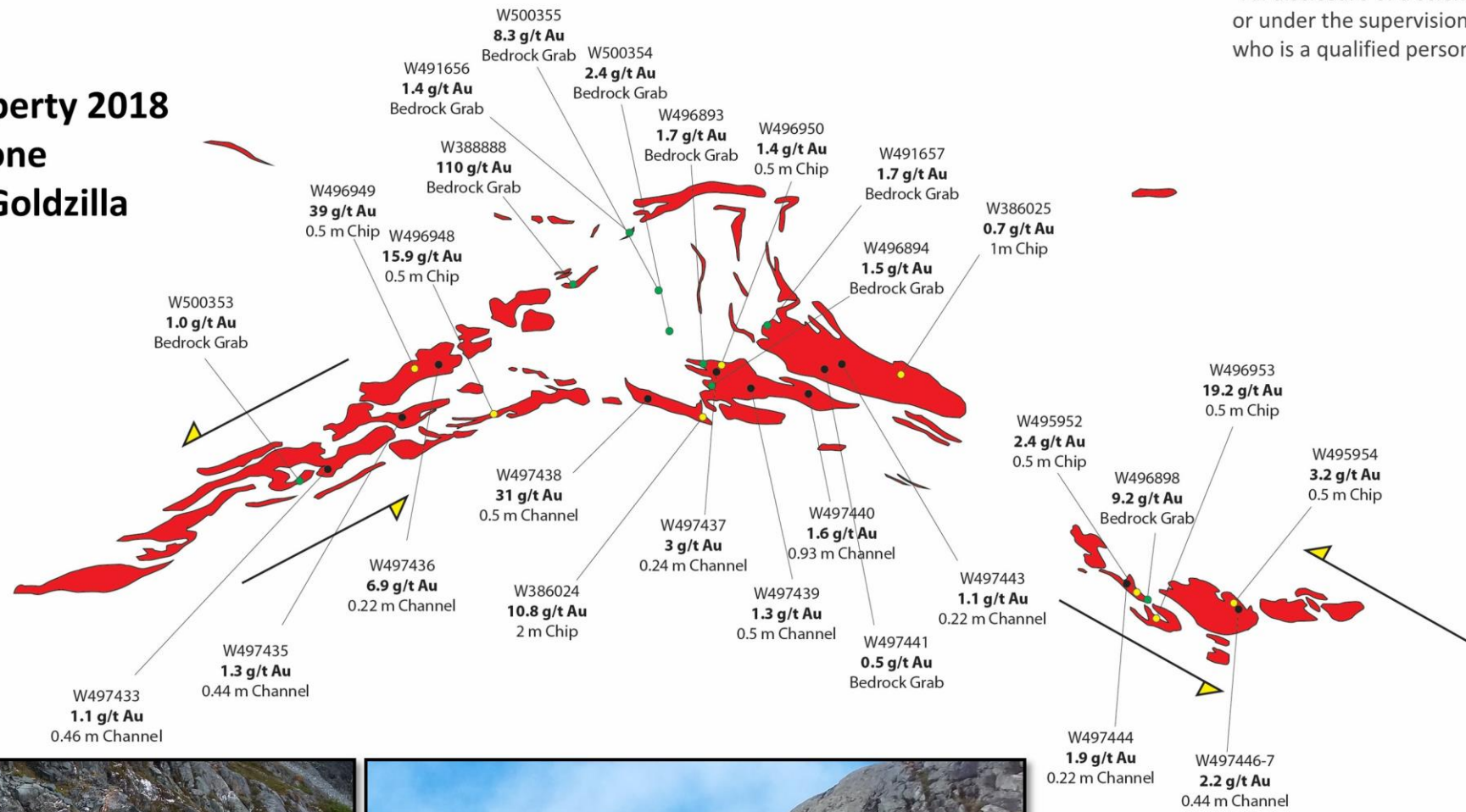


# Gold Standard Property 2018

## Big Show Zone

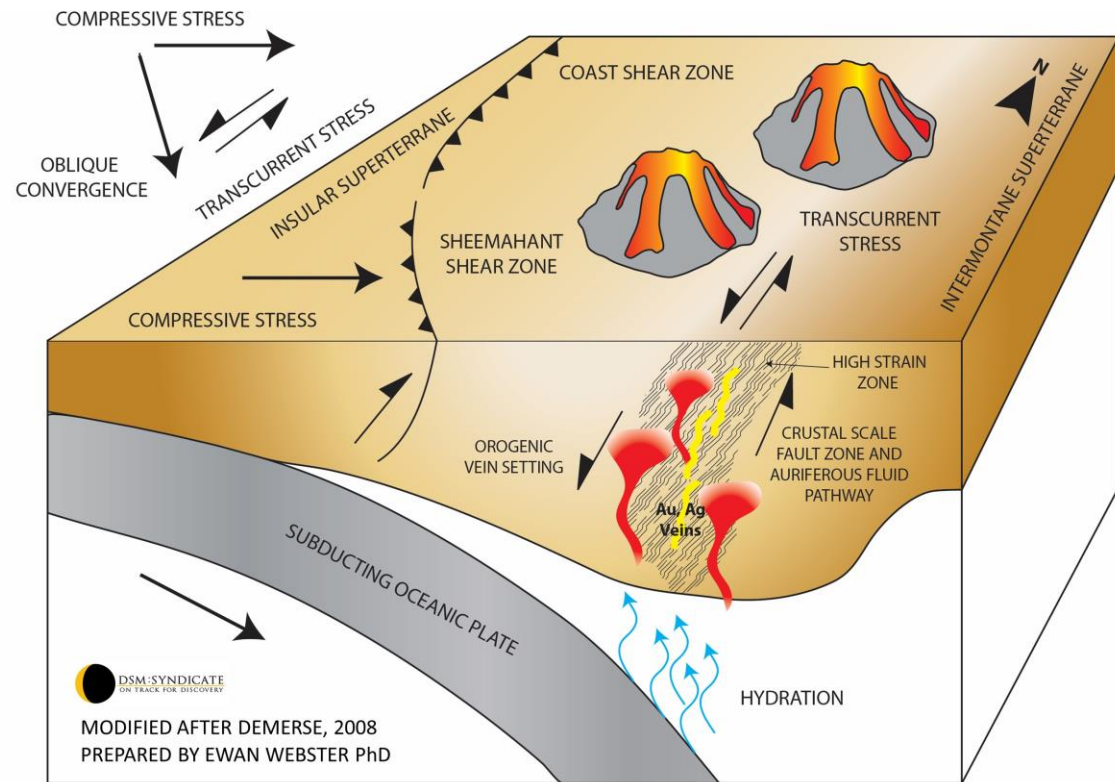
### Vein System 2 - Goldzilla

"All disclosure of a scientific nature was prepared by or under the supervision of Stephen Roach P.Geo., who is a qualified person as defined by NI-43-101."





## POSSIBLE TECTONIC SETTING OF THE HIGH STRAIN ZONE AND GOLD MINERALIZATION (LATE CRETACEOUS)



- The Big Show Zone is situated within a large regional high strain zone, a corridor of brittle and ductile deformation
- A channel sample grab of chlorite-schist from within a 15-metre-wide shear zone returned 0.28 g/t Au over 0.15 meters
- The geological setting and style of mineralization: large gold-bearing mineralized veins and shear zones are consistent with a mesothermal/orogenic system.



TSX-V: JUGR

For additional information on any of these properties please contact:

**Dan Stuart**

CEO and President, Director  
Dan@juggernautexploration.com

**Juggernaut Exploration Ltd**

1130 West Pender Street, Suite 1010  
Vancouver, BC V6E 4A4

Telephone: 604-559-8028  
Fax: 604-559-8253



<http://juggernautexploration.com/>



## ADDITIONAL INFORMATION

Stefan Kruse, Ph.D., P. Geo., Chief Geologist, is the qualified person as defined by National Instrument 43-101, for Juggernaut Exploration projects, and supervised the preparation of, and has reviewed and approved, the technical information in this release. Further information regarding Juggernaut's Midas and Empire properties can be sourced on-line at [www.juggernautexploration.com](http://www.juggernautexploration.com), or by contacting Dan Stuart at 778-233-0293.

All rock, channel and talus fine samples were crushed and pulverized at ALS Canada Ltd.'s lab in Terrace, BC or in Reno Nevada. ALS is either Certified to ISO 9001:2008 or Accredited to ISO 17025:2005 in all of its locations. The resulting sample pulps were analyzed for gold by fire assay in Reno, Nevada or in Vancouver, BC. The pulps were also assayed using multi-element aqua regia digestion at ALS Canada Ltd.'s lab in Vancouver, BC. The silt samples were sieved and assayed at ALS Canada Ltd.'s lab in Vancouver, BC. The coarse reject portions of the rock, channel and talus fine samples, as well as the pulps, were shipped to J2 Syndicate's storage facility in Terrace, BC. The silt samples were disposed of after analysis. All samples were analyzed using ALS Canada Ltd.'s assay procedure ME-ICP41, a 1:1:1 aqua regia digestion with inductively-coupled plasma atomic emission spectrometry (ICP-AES) or inductively-coupled plasma mass spectrometry (ICP-MS) finish for 35 elements as well as the Au-AA24 lead-collection fire assay fusion procedure with atomic absorption spectroscopy (AAS) finish. Any results greater than 100 ppm for silver or 10,000 ppm copper, lead and zinc were additionally assayed using ALS's OG46 method particular to each element. This method used an HNO<sub>3</sub>-HCl digestion followed by ICP-AES (or titrimetric and gravimetric analysis). Gold values of greater than 10 ppm Au were assayed by the Au-GRA22 method which includes a fire-assay fusion procedure with a gravimetric finish. Blanks and duplicates QA/QC samples were inserted into channels sample laboratory batches. Additionally, and 10% sub-sample of pulp and reject material was sent to Activation Laboratories in Ancaster Ontario, for check-analysis.

The reader is cautioned that grab samples are spot samples which are typically, but not exclusively, constrained to mineralization. Grab samples are selective in nature and collected to determine the presence or absence of mineralization and are not intended to be representative of the material sampled.