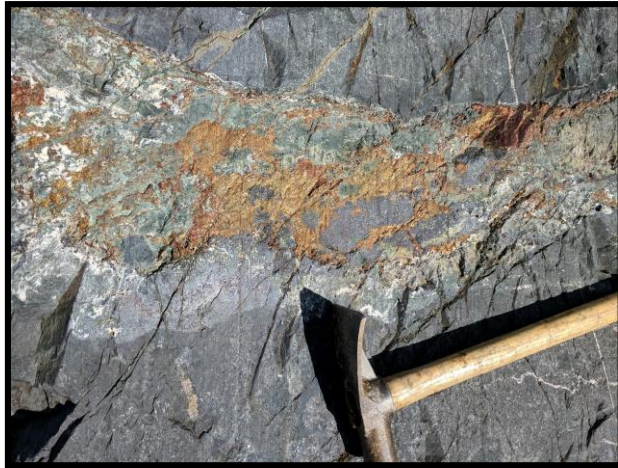


TSX-V: JUGR
Frankfurt: 4JE



ON TRACK FOR DISCOVERY



FORWARD LOOKING STATEMENT

This presentation may contain forward-looking statements, including management's assessments of future plans & operations, expectations of future production, cash flow & earnings. These statements are based on current expectations that involve a number of risks & uncertainties, which could cause actual results to differ materially from those anticipated.

Forward-looking statements may be identified by the use of words such as “believes”, “anticipates”, “expects”, “estimates”, “may”, “could”, “would”, “will”, or “plan”. Since forward looking statements are based on assumptions and address future events and conditions, by their very nature they involve inherent risks and uncertainties.

Actual results relating to, among other things, results of exploration, reclamation, capital costs, and the company's financial condition and prospects, could differ materially from those currently anticipated in such statements for many reasons such as but not limited to; changes in general economic conditions and conditions in the financial markets; changes in demand and prices for the minerals the Company expects to produce; litigation, legislative, environmental and other judicial, regulatory, political and competitive developments; technological and operational difficulties encountered in connection with the Company's activities; and changing foreign exchange rates and other matters discussed in this presentation.

Persons should not place undue reliance on the Company's forward-looking statements. Further information regarding these and other factors, which may cause results to differ materially from those projected in forward-looking statements, are included in the filings by the Company with securities regulatory authorities. The Company does not assume any obligation to update or revise any forward looking statement that may be made from time to time by the Company or on its behalf, except in accordance with applicable securities laws, whether as a result of new information, future events or otherwise.

The TSX Exchange has not reviewed and does not accept responsibility for the adequacy or accuracy of the contents of this presentation, that has been prepared by management.

This presentation does not constitute an offer to sell or a solicitation of an offer to buy any securities of the Company in any jurisdiction. Any such offer or solicitation will be made only in accordance with all applicable laws. The common shares of the Company will not be and have not been registered under the United States Securities Act of 1933, as amended, and may not be offered or sold in the United States, or to a U.S. person, absent registration or applicable exemption therefrom.



CORPORATE OVERVIEW

- Juggernaut Exploration Ltd – **A New Ground Floor Opportunity**
- Focused on Northwestern British Columbia With Exposure to Over 6 Precious and Base Metal Projects
- **Seasoned Team:** 30 Years of a Proven Track Record of Discovery Culminating in ~1 Billion Dollars of Value
- **100 % Option on the Empire Property**
- **100 % Option on the Midas Property**
- **Rapid Glacial and Snowpack Abatement** resulting in discoveries



BUILDING SHAREHOLDER WEALTH

- Juggernaut is building shareholder wealth by **systematically exploring** its 100 percent optioned **Empire and Midas properties**.
- **Juggernaut's management**, exploration and technical teams have **over 200 years of combined experience** with a proven track record of success.
- Members of the Juggernaut Exploration's team have been recognized by their peers in the industry for several significant mineral discoveries over the last 30 years.
- **Juggernaut Exploration Ltd. owns a 20 percent stake in the DSM Syndicate**, a successful project generator in British Columbia focused on areas of recent glacial and snowpack abatement.



MANAGEMENT AND DIRECTORS

Dan Stuart, President & CEO, Director

- >20 years of capital market experience
- >100 million dollars raised in the natural resource sector
- Has raised capital for several private mineral syndicates, YCS, B2, J2, DSM
- Institutional clients in both the Americas and Europe

William Jung, Director & CFO

- 35 years of experience in finance and business
- Former chartered accountant involved in management of companies on the TSX
- >25 years experience in the management of companies publicly listed on the TSX

Jim McCrea, Director

- 25 years experience in exploration and mining
- 20 years in mineral resource estimation including Cumberland Resources
- Ore body modelling and resource estimation for the successfully targeted take over company Cumberland Resources Ltd. By Agnico-Eagle Mines Ltd.

Chris Verrico, Director

- >20 years of managing mineral exploration projects in BC, Yukon, Alaska, Nunivut
- Served as a director and officer of numerous start-up companies, most of which became publicly traded companies
- Experience as a contractor with extensive northern rural-remote infrastructure construction and contract mining projects

Peter Bryant, Director

- 45 years of experience in international finance and investment banking
- Former director of investment banking with Standard Chartered Group
- Worked for Hill Samuel Group and Guinness Mahon Holding's, two of the prestigious merchant banking house in London, England
- Previously, Director of investment banking with the Standard Chartered Group, Vancouver

SPECIAL ADVISORS AND CONSULTANTS

Bill Chornobay

- >30 years proven track record of discovery resulting in over ~1 billion dollars in value

Stefan Kruse, Ph.D., P.Geo.

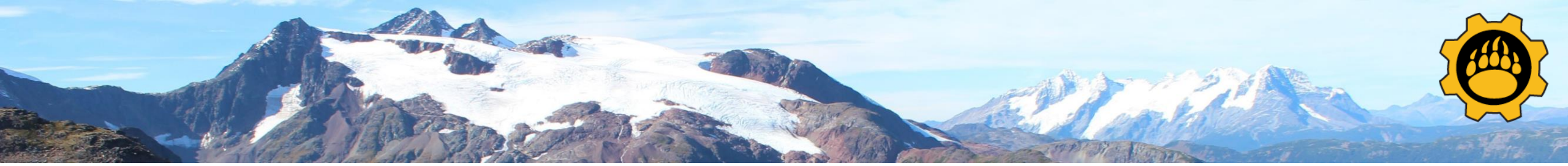
- Extensive technical and project management experience in structurally controlled U, Au, Cu-porphyry and PGE deposits
- Former lecturer and current Honorary Research Associate at the University of New Brunswick



CAPITAL STRUCTURE

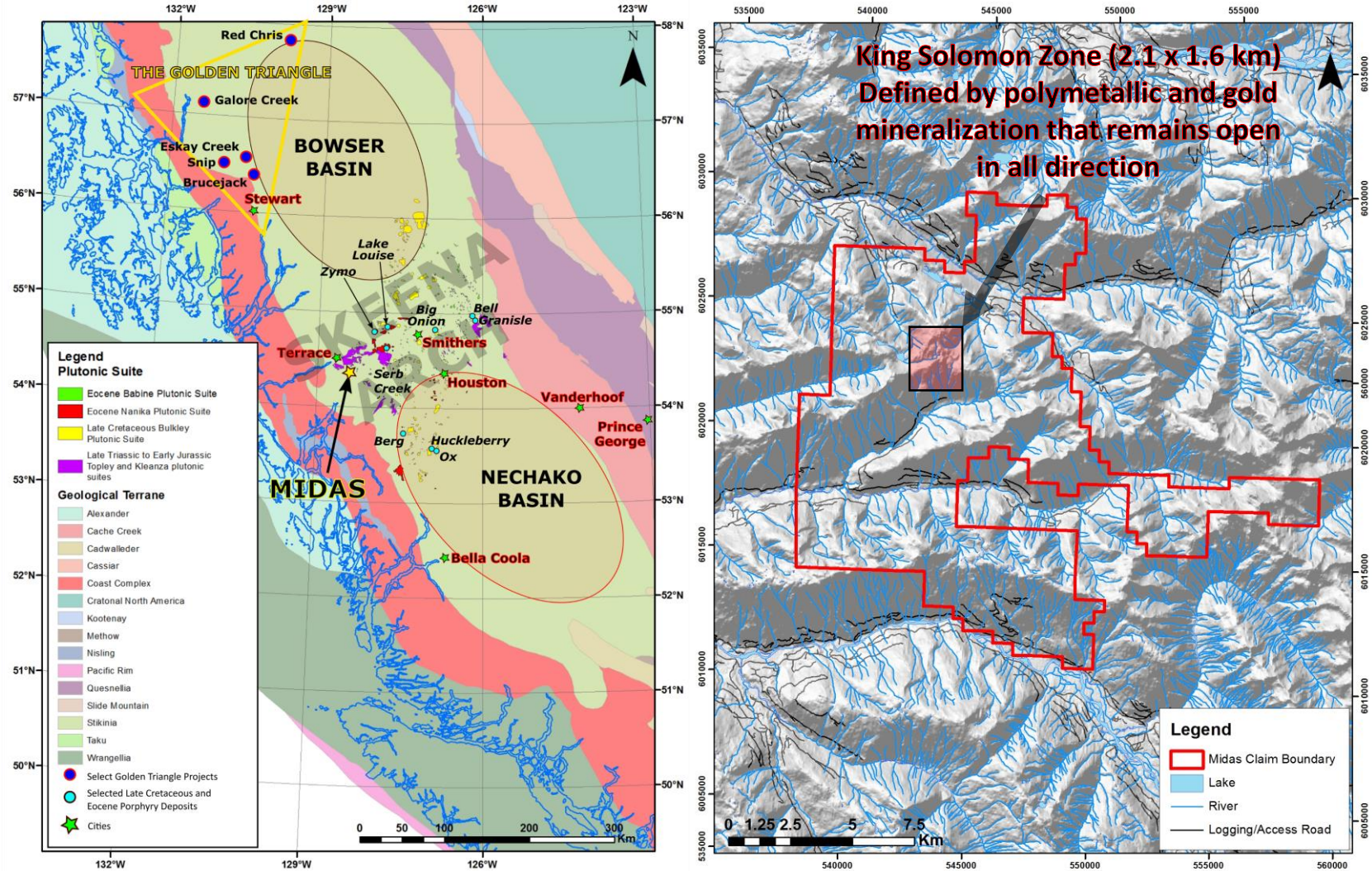
SHARE STRUCTURE	
SHARES OUTSTANDING	61,429,569
FULLY DILUTED	99,844,569
OPTIONS (weighted average \$0.42)	2,015,000
WARRANTS <i>at \$0.25 CALL at \$0.50 EXPIRY 2019</i>	20,000,000
WARRANTS <i>at \$0.08 escrowed provisions</i>	16,400,000
CASH FULLY DILUTED <i>oversubscribed financing done at \$0.15 warrant at \$0.25</i>	\$7,700,000

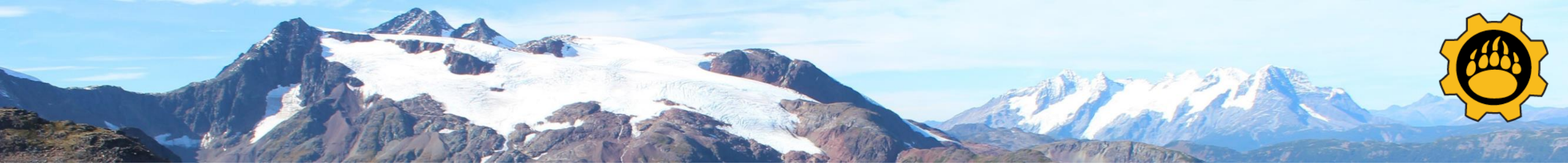
- No Debt
- Management, insiders, and accredited investors ~ 80%
- Strong support from institutions and miners alike



MIDAS PROPERTY

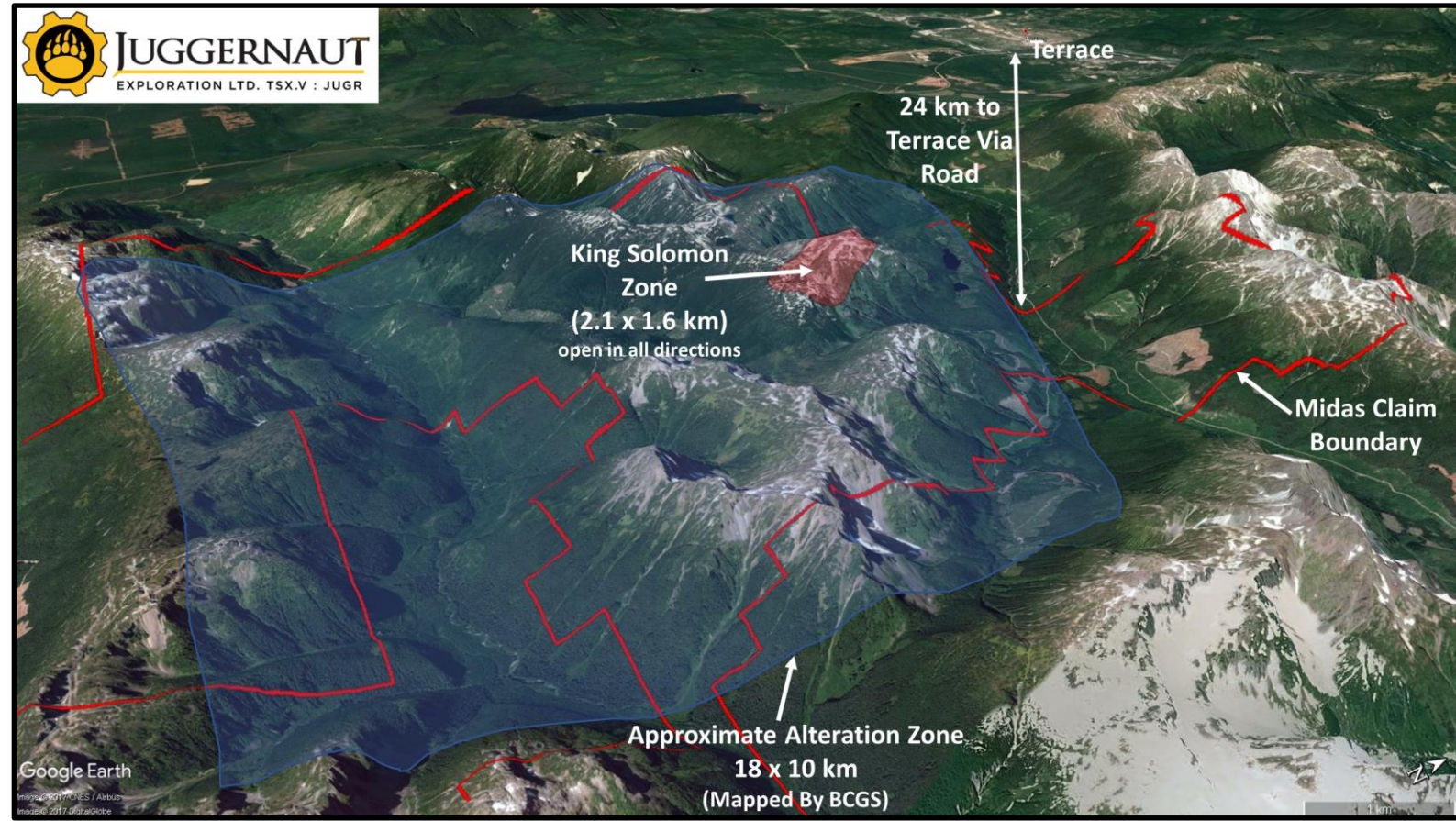
- The Midas Property is **16,653 ha**
 - 100 % controlled by Juggernaut
- Logging road access on property
- 14 km to major power, CN rail, and roads
- Further, 10 km to Terrace, BC and major infrastructure, and further 45 km from Kitimat deep sea port and Rio Tinto smelter
- **World class geological setting** with strong potential for VMS Eskay Creek style mineralization
 - [\(link to video overview\)](#)

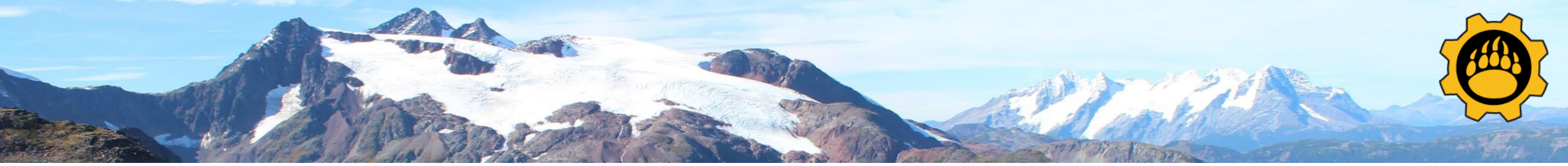




MIDAS PROPERTY KING SOLOMON GOLD ZONE DRILL READY

- BCGS mapped an **18 x 10 km alteration zone** of intense gossan development and quartz-sericite-pyrite alteration
- **King Solomon Zone (2.1 x 1.6 km)** falls within the larger alteration zone
 - Extensive bedrock polymetallic and gold mineralization define the zone that remains open in all directions, including to depth
 - Indicating a significant hydrothermal system





MIDAS PROPERTY KING SOLOMON GOLD ZONE HIGHLIGHTS

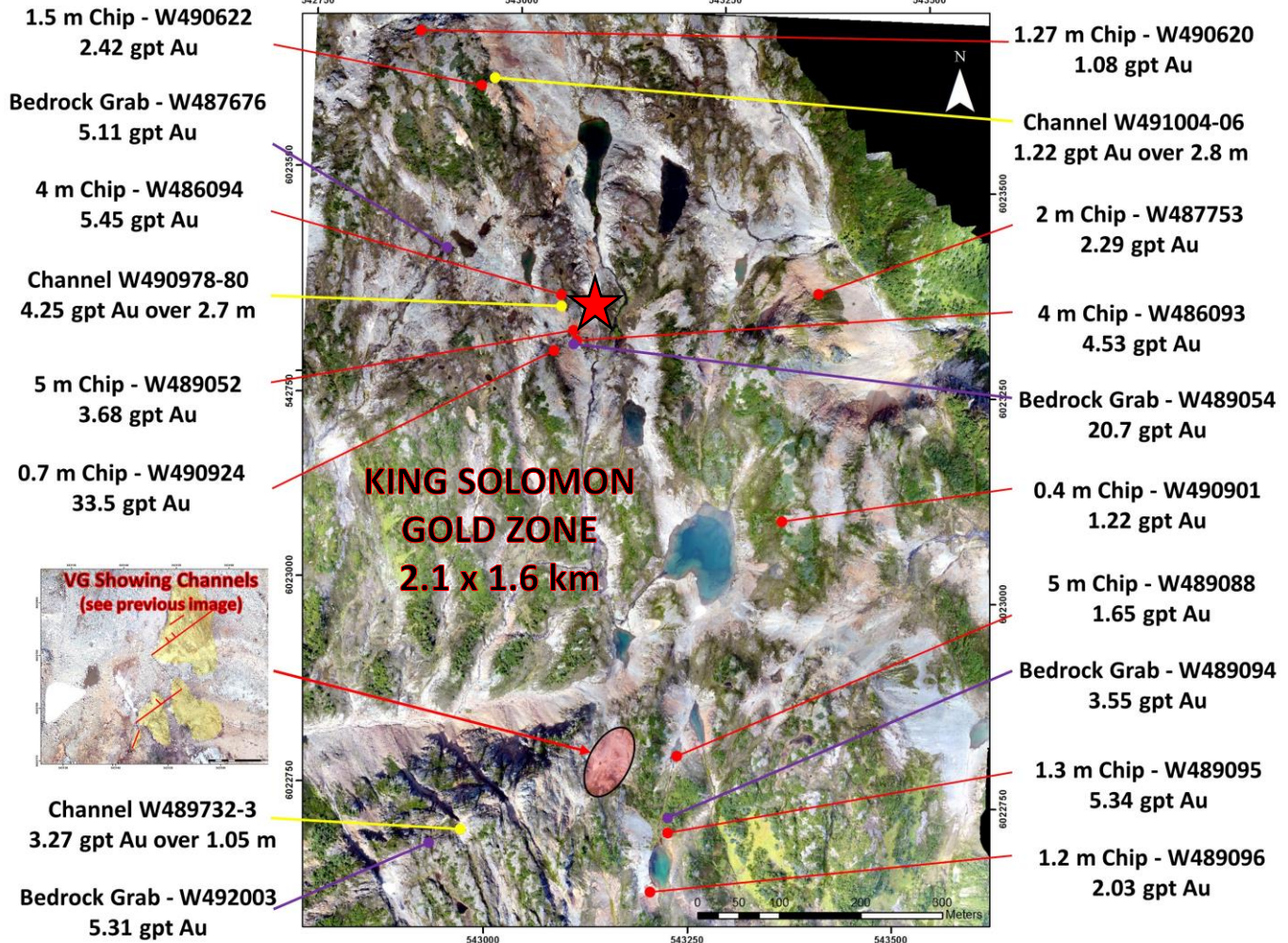
[\(link to video overview\)](#)

King Solomon Gold Zone

EXTENDING NW 750 METRES ALONG STRIKE FROM THE VG SHOWING IS
MULTIPLE HIGH-GRADE BEDROCK GOLD
CHANNEL AND CHIP SAMPLES
(THE ZONE REMAINS OPEN IN ALL DIRECTIONS)

2.1 x 1.6 km zone of extensive bedrock polymetallic and gold mineralized samples

* Grab samples are selective in nature and collected to determine the presence or absence of mineralization and are not intended to be representative of the material sampled.





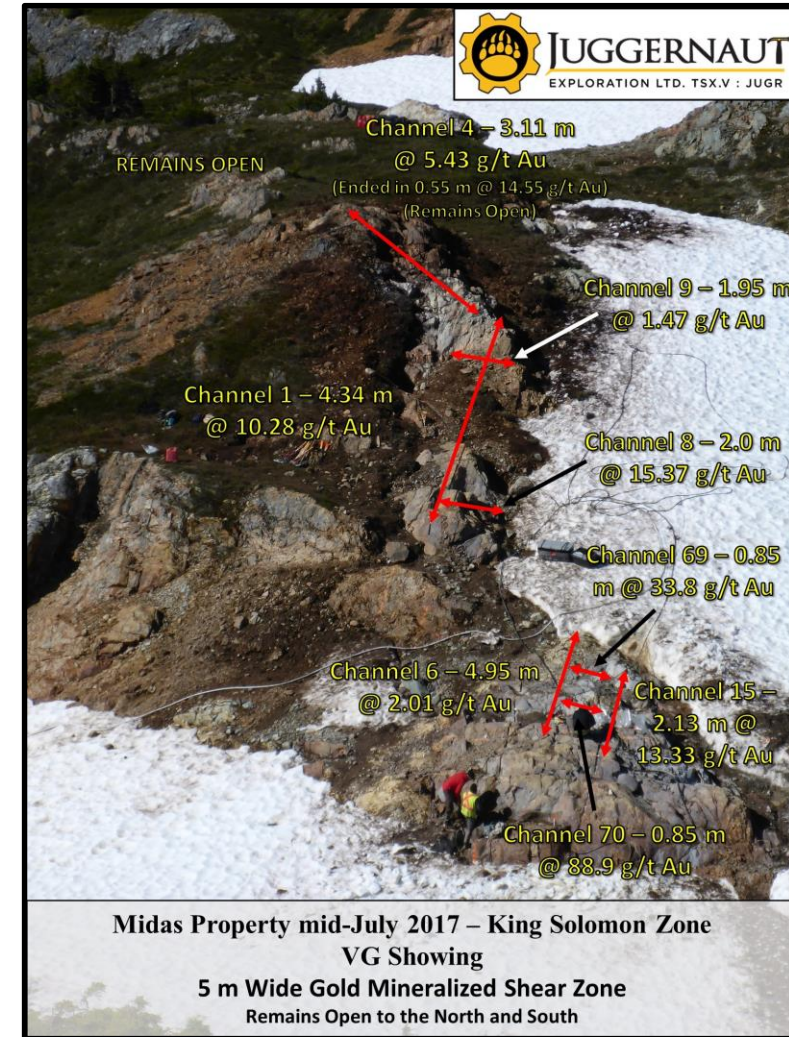
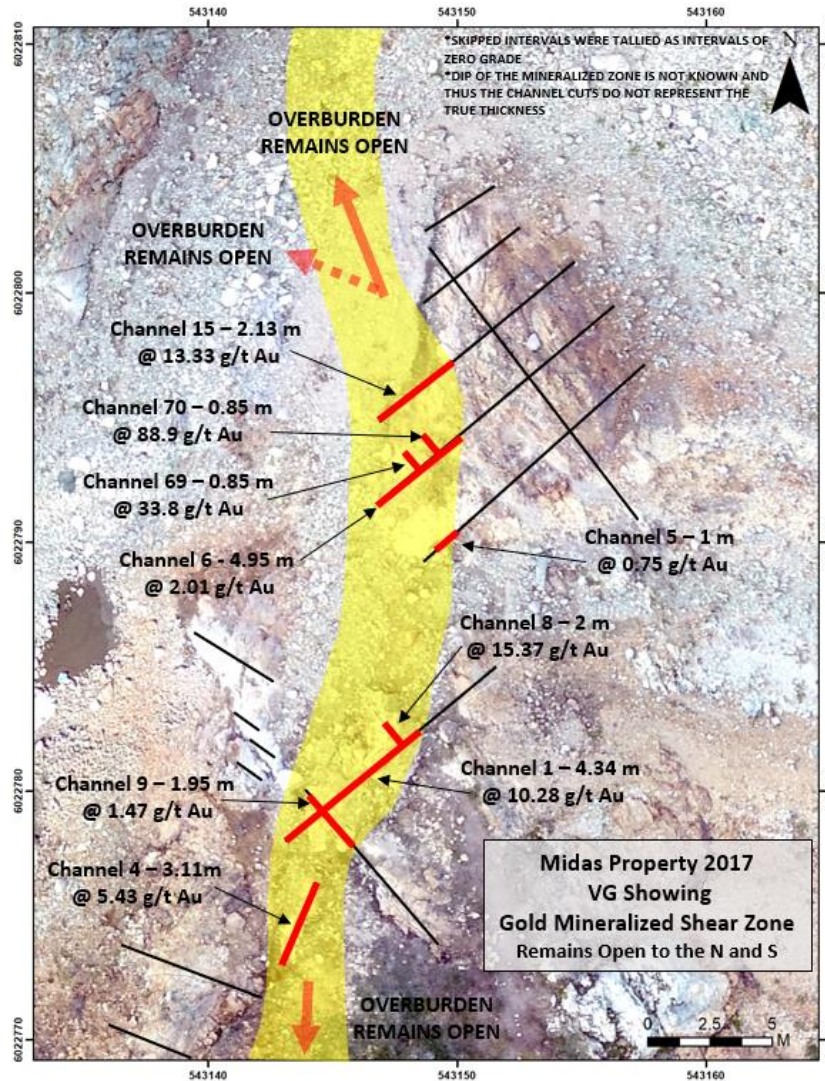
MIDAS PROPERTY

KING SOLOMON ZONE - VG SHOWING HIGHLIGHT

A series of channel cuts at the VG showing intersected a north-south striking, steeply-dipping mineralized structure.

This anastomosing shear zone is intermittently exposed on surface for 25 metres and remains **open along strike and depth. Drill Ready.** Channel cut intersections include:

- Channel 1 intersected **4.34 metres of 10.28 grams per tonne gold.** ([link to video of channel cut](#))
- Channel 6 intersected **4.95 meters of 2.01 grams per tonne gold.**
- Channel 15 intersected **2.13 metres of 13.3 grams per tonne gold.**
- Channel 4 intersected **3.11 metres of 5.43 grams per tonne gold (ended in 0.55 m @ 14.55 g/t Au, remain open).**
- Two individual 0.85 metre channels, cut in NW-SE orientation within the boundaries of the mineralized structure assayed **88.9 (2.59 oz/t) and 33.8 grams per tonne gold** respectively.

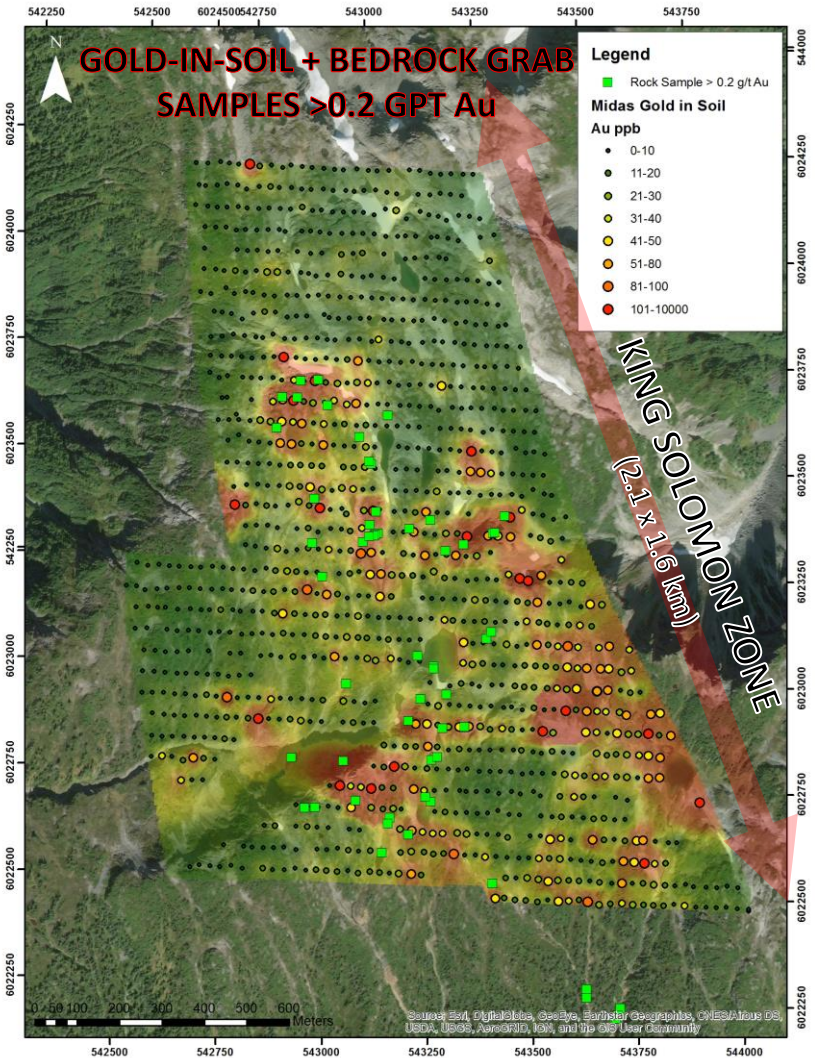
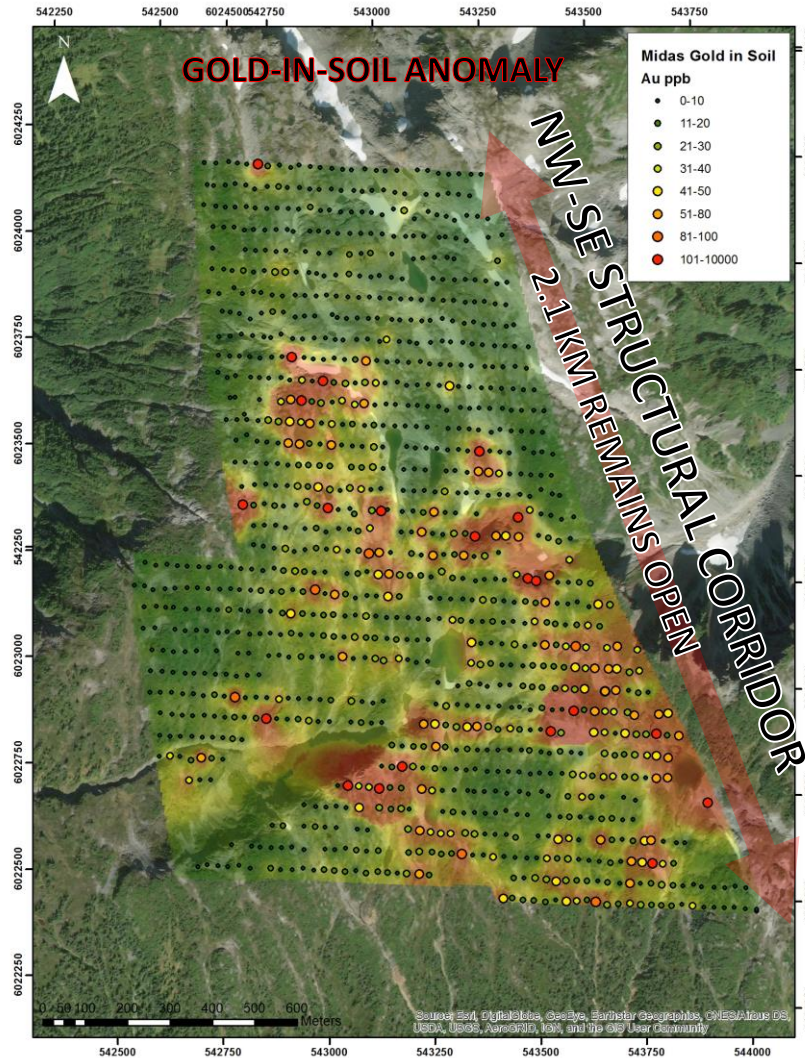


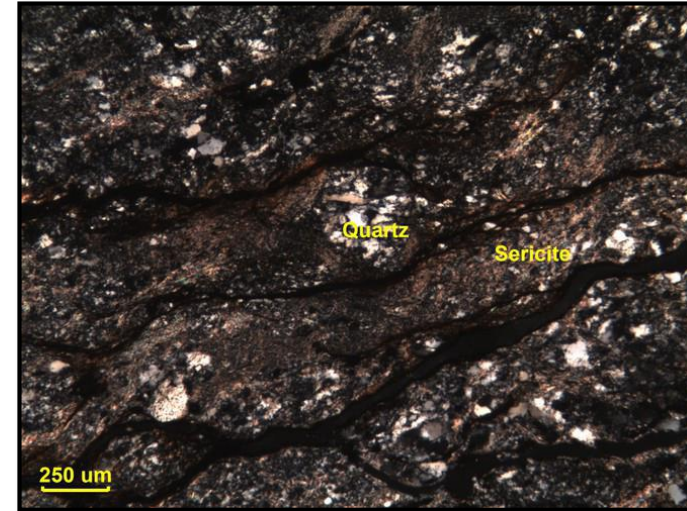
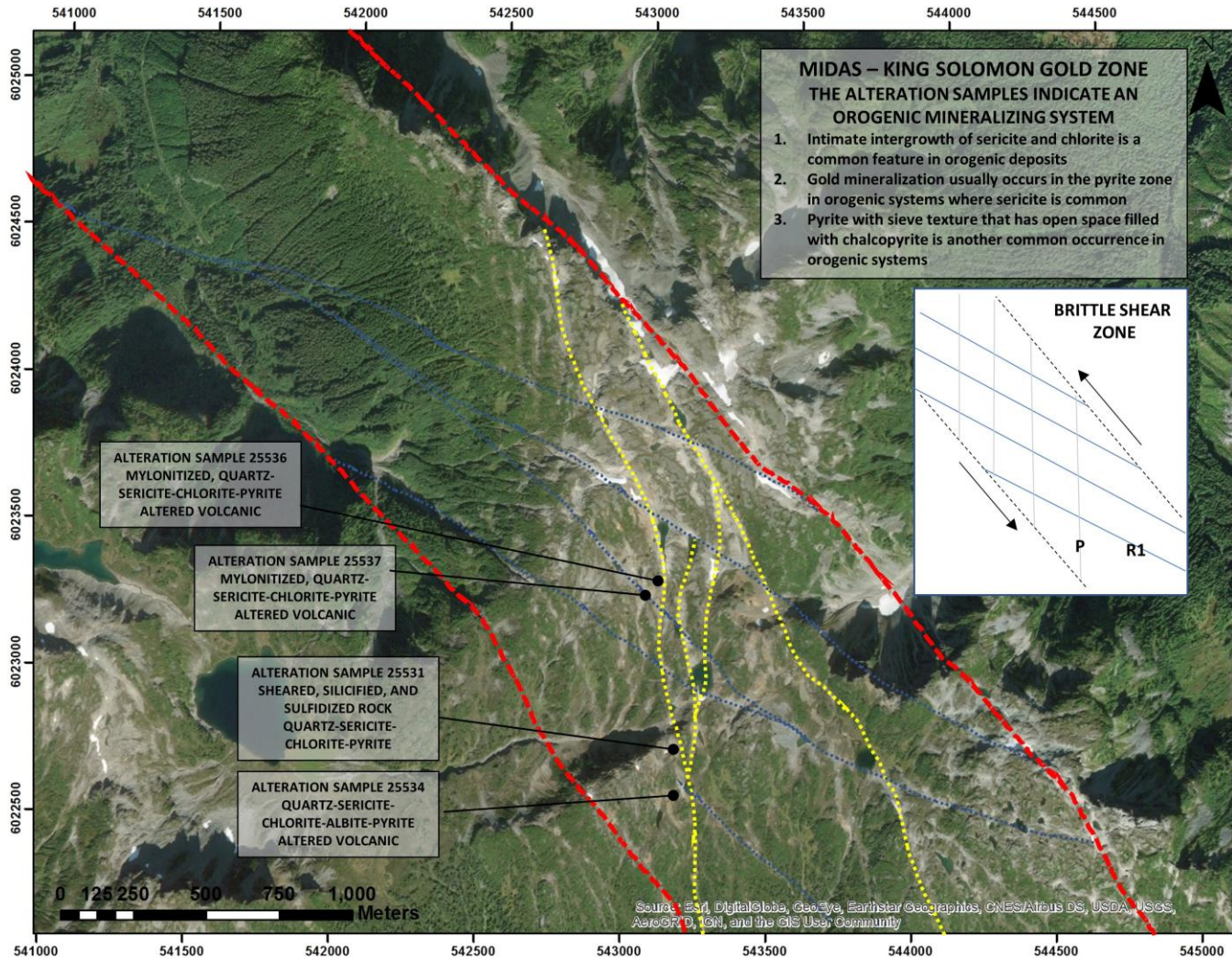
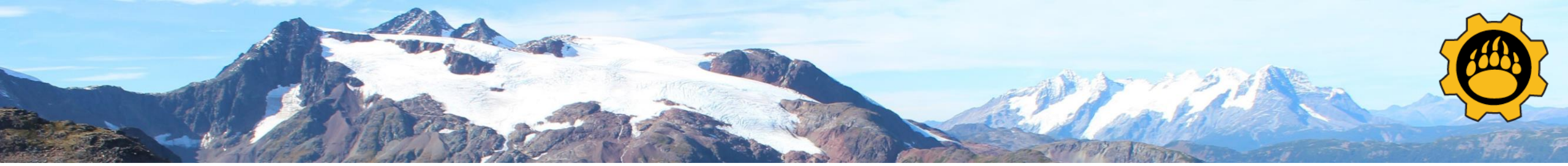


KING SOLOMON ZONE SOIL GEOCHEMISTRY

Soil geochemistry defined a **1100 by 800 metre zone of anomalous gold-in-soil** anomaly that remains open

- Gold in soil up to **8.84 grams per tonne**
- Multiple **trenching targets identified** to provide for additional drill targets
- **Soil anomaly correlates with widespread gold in bedrock samples** >0.2 grams per tonne
- Widespread bedrock gold mineralization coupled with an extensive gold-in-soil anomaly covering 1100 by 800 metres **indicates the presence of a large gold system**

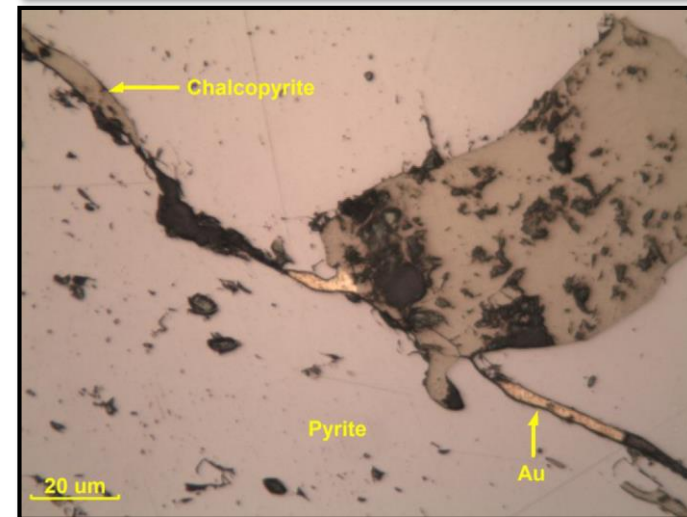




Sample 25536

Mylonitized, quartz-sericite-pyrite-chlorite altered volcanic

Boudins of recrystallized quartz are wrapped by sericite



Sample 25531

Sheared, silicified, and sulfidized rock with quartz-sericite-pyrite-chlorite

Sulfides mostly comprise fine-grained pyrite and chalcopyrite ± sphalerite. Gold is observed filling fractures in pyrite with chalcopyrite.



MIDAS PROPERTY KING SOLOMON GOLD ZONE SUMMARY

- Midas is an **extensive bedrock gold discovery** in a world class geological setting that is drill ready
- **Gold in bedrock** from chip, channel, and grab samples define a **2.1 x 1.6 km area** that lies within a larger **10 x 18 km quartz-sericite-pyrite alteration zone** that was independently mapped by the BCGS
 - The alteration system suggests the property has the **potential to host volcanic-hosted massive sulphide** mineralization.
 - The volcanic rocks are **correlative with those in the Stikine assemblage** that hosts multiple, significant VHMS deposits within British Columbia such as the **Eskay Creek, Tulsequah Chief, Anyox, and Granduc** deposits.
- Post-volcanic **deformation and intrusive activity** has caused significant **remobilization of gold into faults, shear zones, and along foliation.**
 - Including the **VG showing shear zone** that returned channel sample grades up to **4.34 metres of 10.28 grams per tonne gold** (the true thickness of the zone is unknown)
 - The gold bearing samples have been collected over a zone **750 metres long** that remains open



2018 MIDAS OPPORTUNITY & OBJECTIVES



Systematically drill the newly discovered northwest trending King Solomon Gold Zone

- Channels cuts up to **4.34 metres of 10.28 grams per tonne gold** (true thickness of zone unknown)
- Channels and chip samples from several zones along a strike length of 750 metres northwest from the VG showing grade 1.22 to 33.5 grams per tonne gold (remains open)



An extensive **1100 by 800 metre** gold-in-soil anomaly that remains open in all directions indicates the presence of a large gold system. Trenching and channel cutting this anomaly should provide for strong additional drill targets

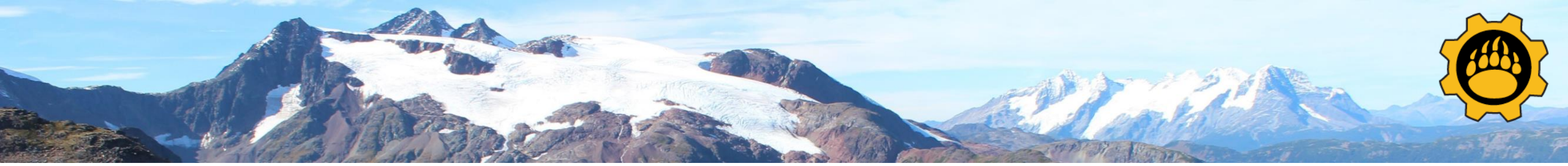
- **Gold in soil up to 8.84 grams per tonne**
 - Of 1133 soil samples taken 752 returned above background values



Ground geophysics, mapping, and prospecting to outline the full geometry, along strike and to depth of the King Solomon Zone

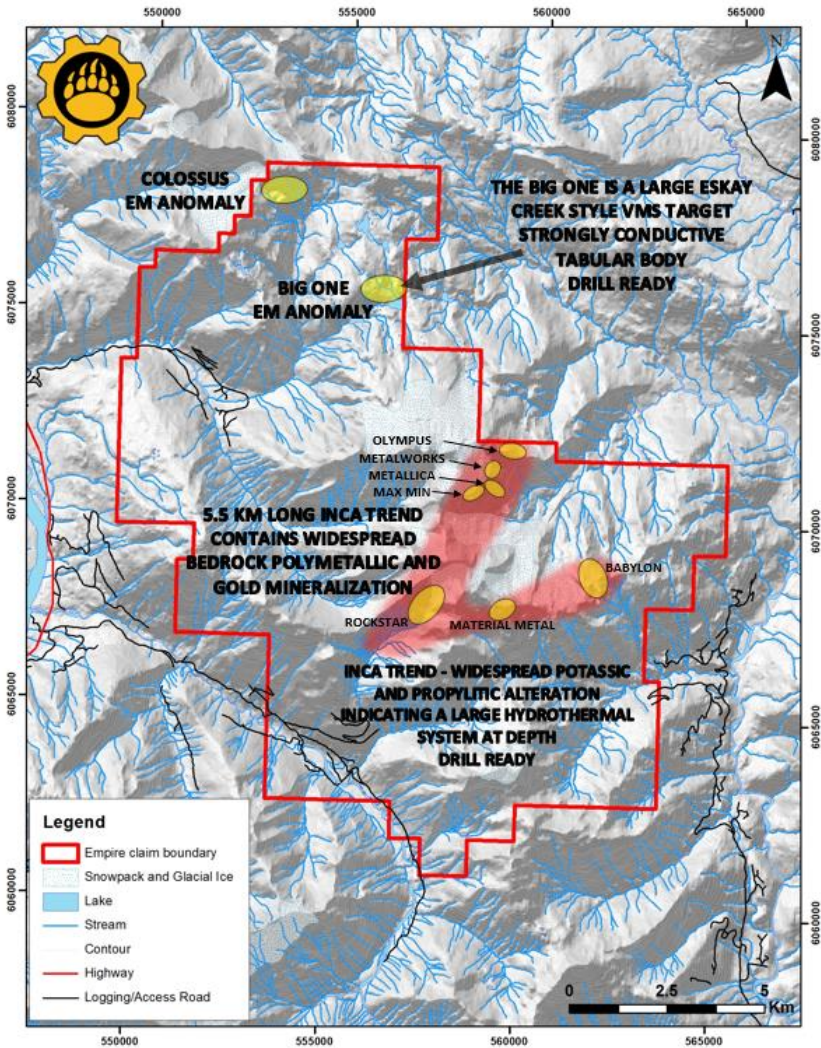
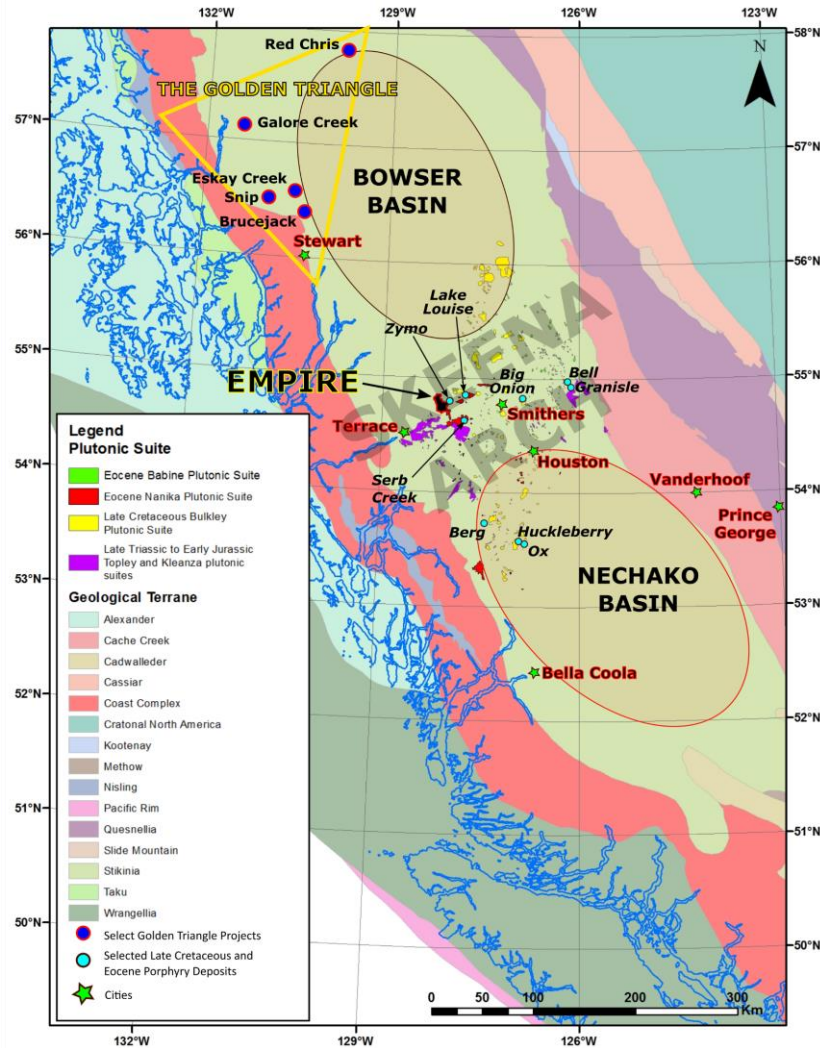


Creating shareholder wealth through continued systematic exploration that results in success



EMPIRE PROPERTY

- The Empire property covers **16,393 hectares**
 - 100 % controlled by Juggernaut
- Logging Road access on property
- 8 km to major power, CN Rail, and roads
- Further 35 km by highway to Terrace, BC and major infrastructure, and further 45 km from Kitimat deep sea port and Rio Tinto smelter
- World class geological setting



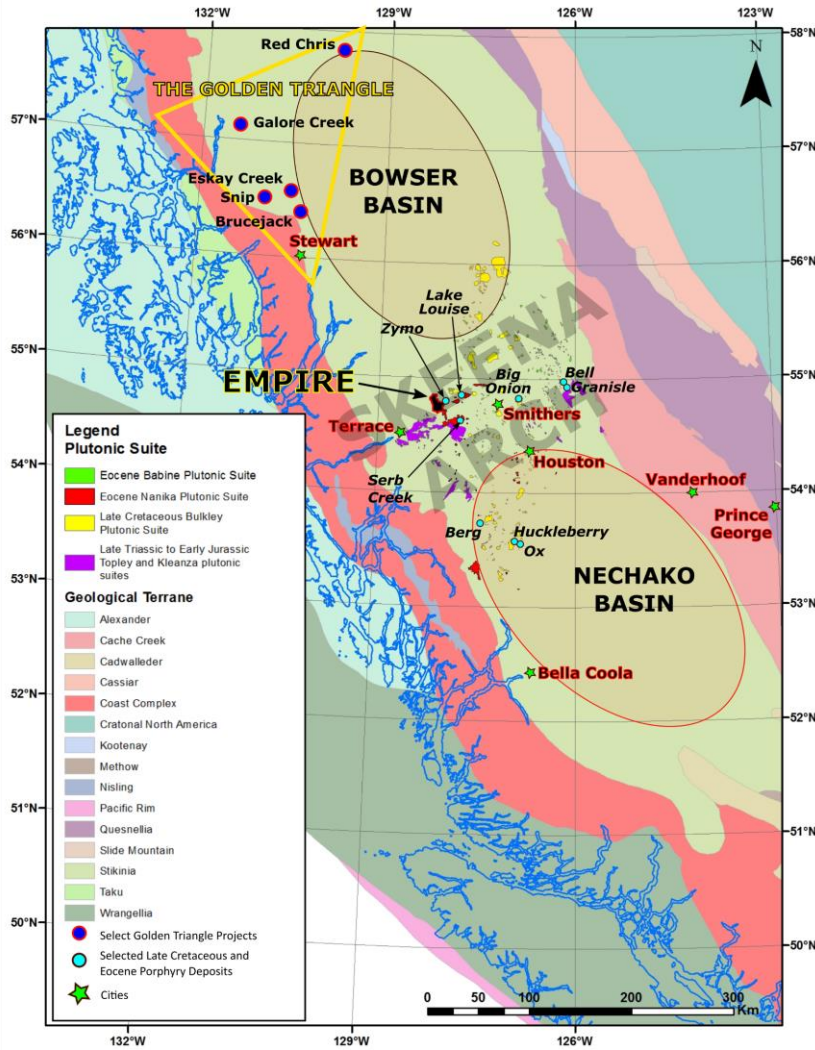
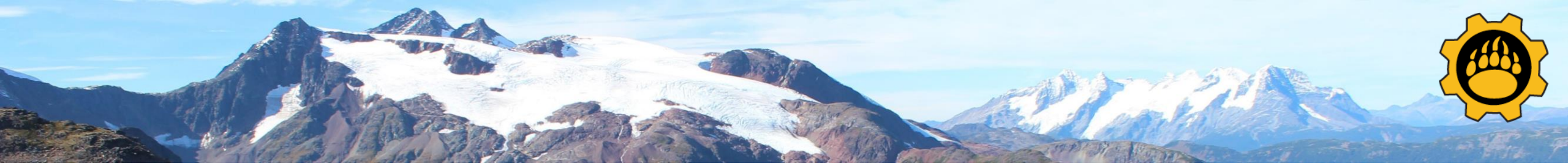


EMPIRE PROPERTY

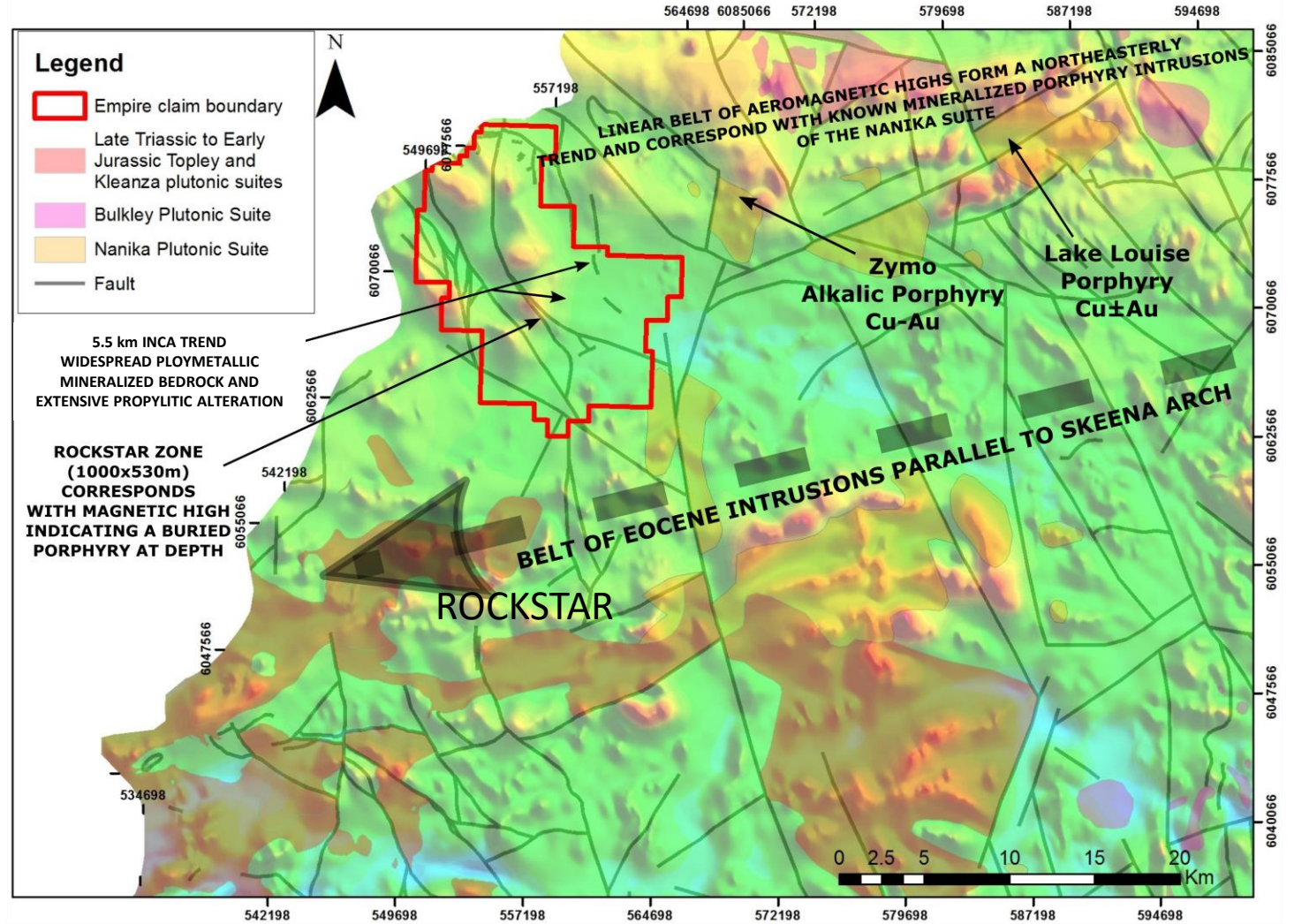
5.5 KM LONG INCA TREND

- **Widespread porphyry dykes and extensive propylitic alteration** within the 5.5 km Inca Trend are consistent with **polymetallic-style mineralization** on the Empire Property.
- **High-grade widespread gold and polymetallic mineralization** confirmed at Max Min, Metalworks, Metallic, Rockstar, and Olympus targets indicate the presence of a large hydrothermal feeder system at depth
 - All zones remain open
- Multiple new bedrock discoveries made due to **rapid glacial and snowpack abatement**





TSX-V: JUGR & Frankfurt: 4JE



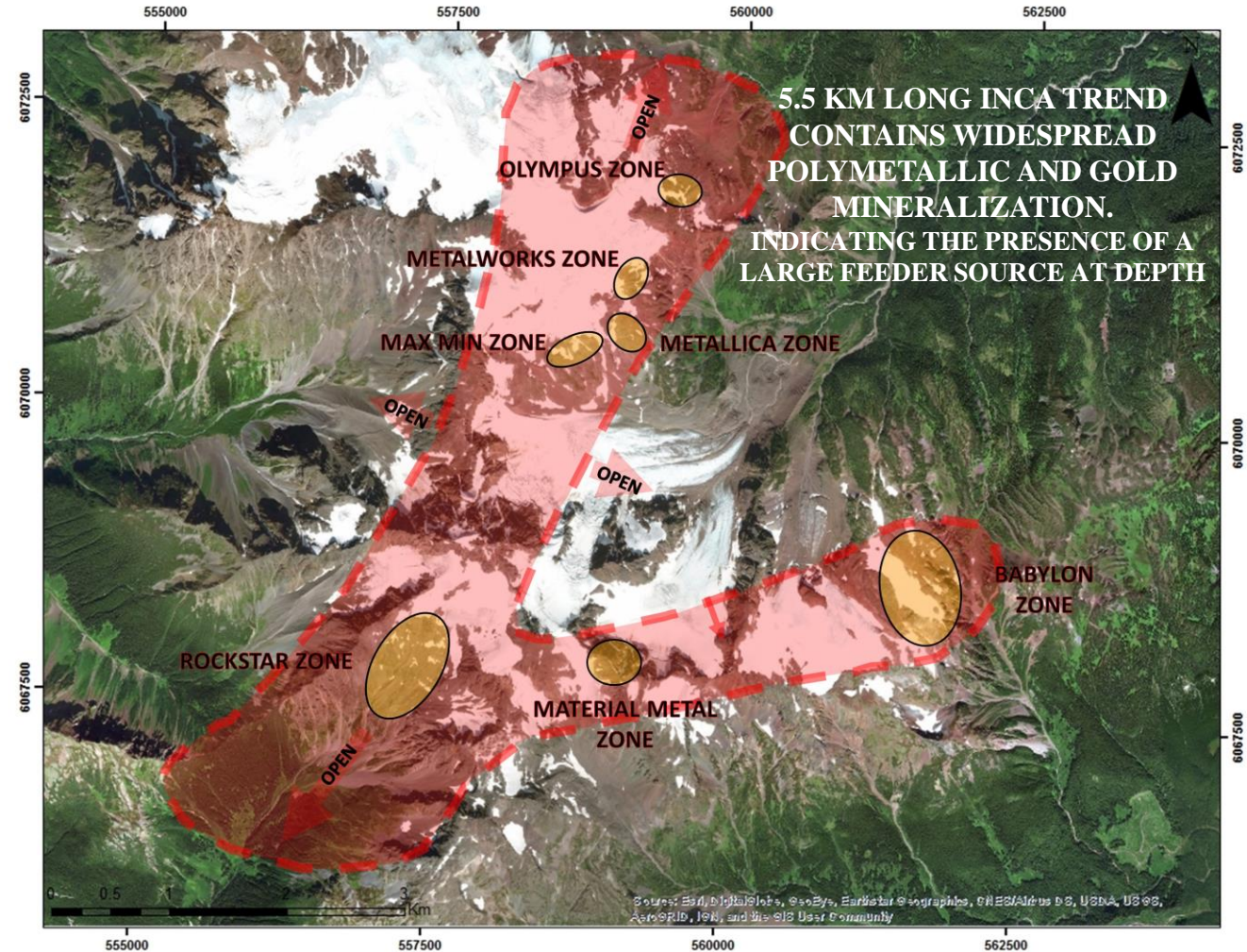
<http://juggernautexploration.com/>



EMPIRE PROPERTY

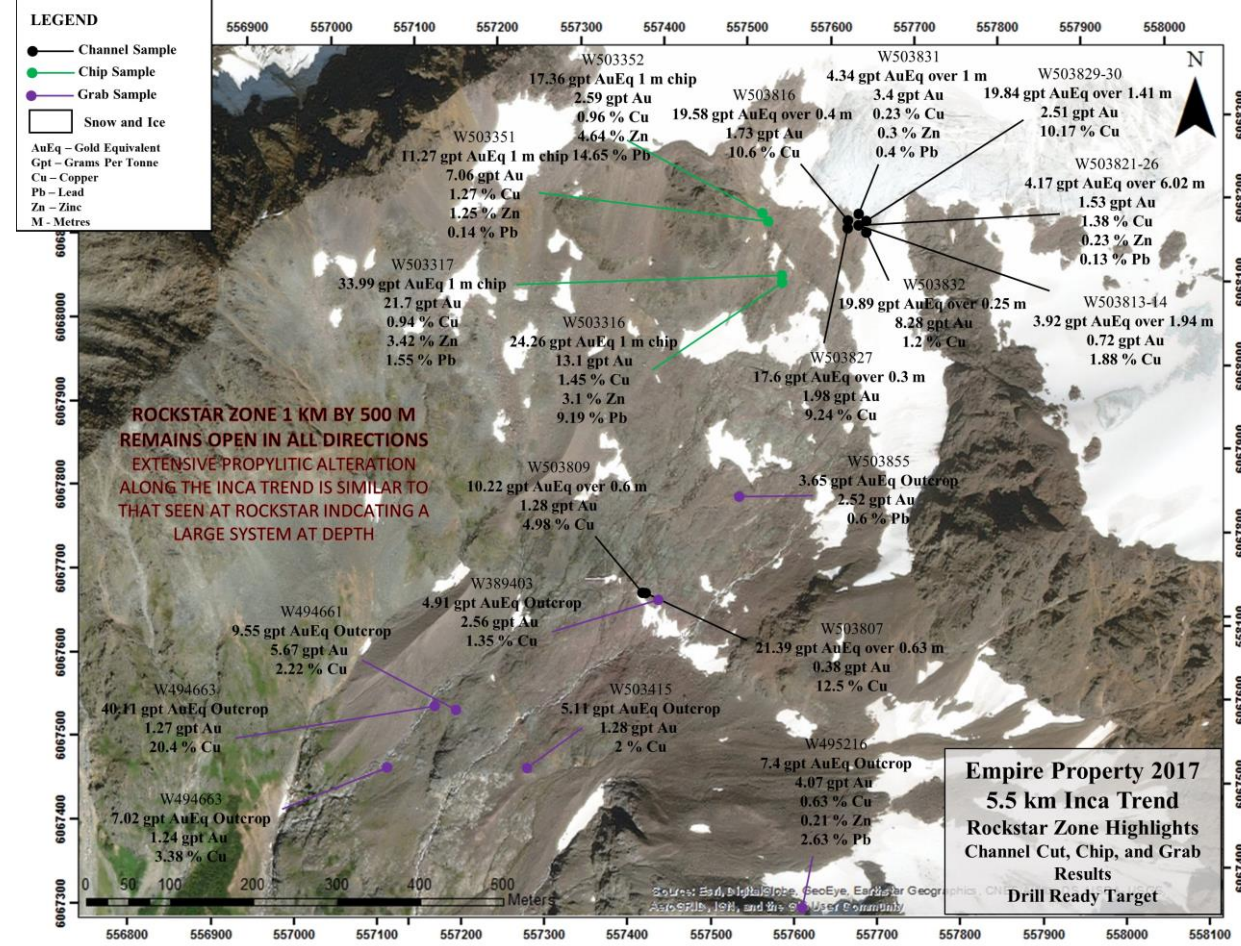
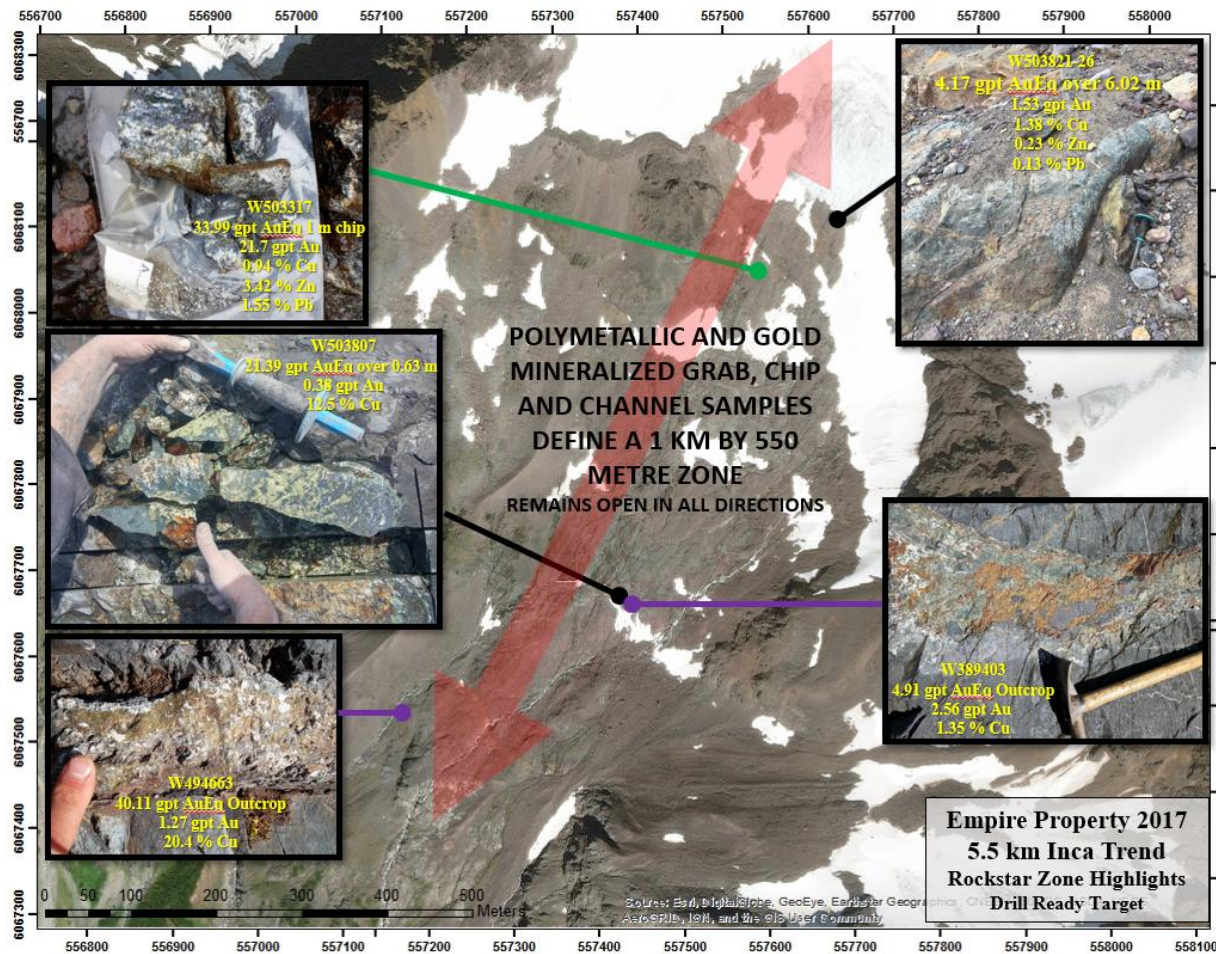
ROCKSTAR ZONE - 1 KM by 530 M REMAINS OPEN

- **New extensive bedrock discovery** due to rapid glacial and snowpack abatement
- **1 kilometre by 530 metre zone of widespread polymetallic mineralization.** Mineralized chip, grab and channel samples have been collected over a vertical relief of >450 metres and the zone remains open ([link to aerial view of zone](#) and [link to mineralization overview](#))
 - *Adjacent to infrastructure – roads, power, rail*
- **Rockstar channel cut in breccia contained massive to semi-massive sulphides over 6.02 metres** containing 1.53 gpt Au, 1.38 % Cu, 0.23 % Zn, and 0.13 % Pb (True thickness not known)
 - *The channel both started and ended in mineralization*
- **92% of chip and outcrop grab samples** contain gold and polymetallic mineralization
- **Multiple Strong Drill Ready Targets**





EMPIRE PROPERTY - ROCKSTAR ZONE HIGHLIGHTS





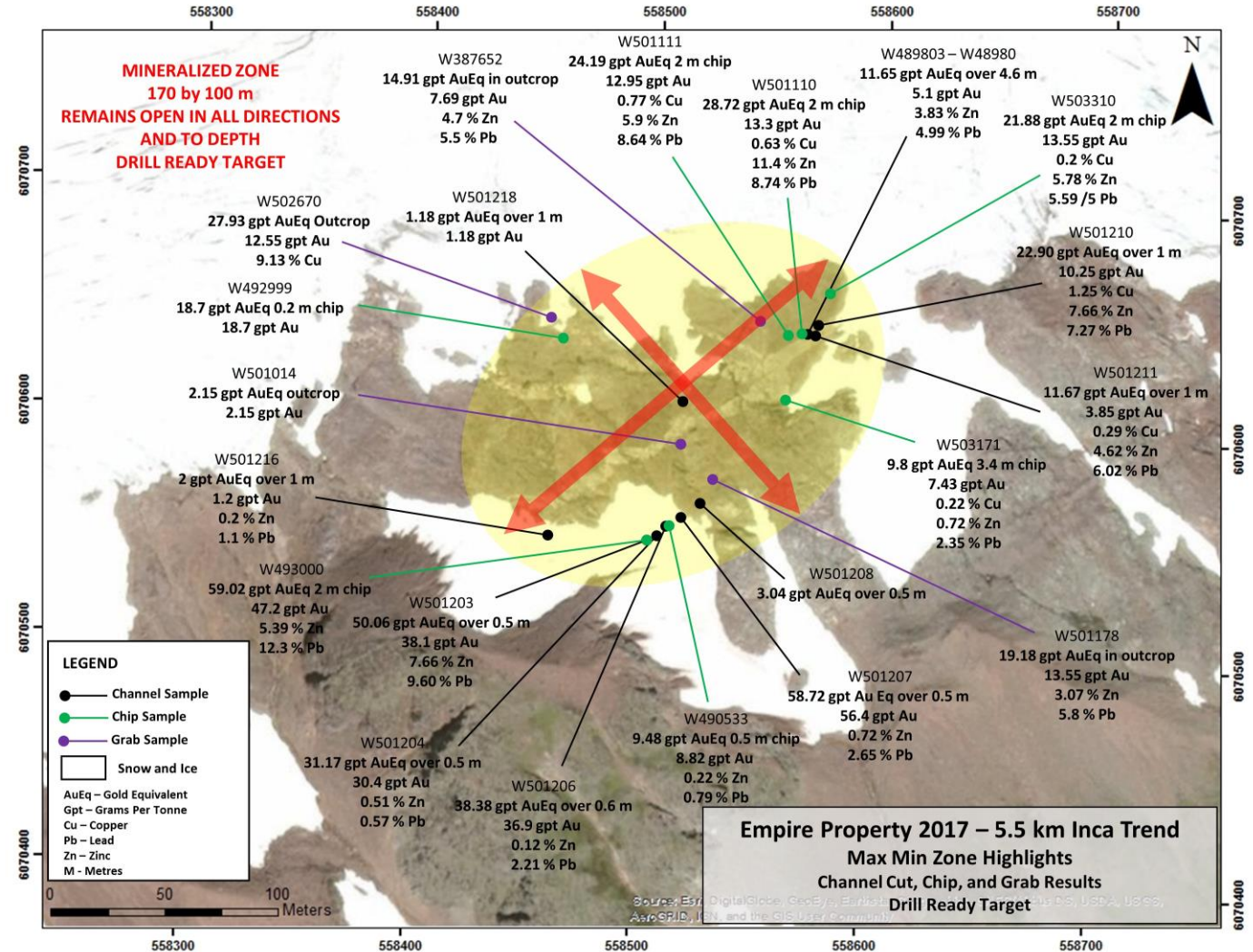
EMPIRE PROPERTY – INCA TREND HIGHLIGHTS

MaxMin Zone – Drill Ready

- 170 by 100 metres (remains open in all directions - zone defined by chip and grab samples)
- **4.6 metre channel sample**
 - **4.8 gpt Au, 0.26 % Cu, 3.73 % Zn, 4.85 % Pb**
 - Ended in mineralization (true thickness not known)
- **Six channel samples of 1 metre or less ranged from 11.65 to 58.72 grams per tonne gold equivalent (1.7 oz/t)**
- 2.0 metre chip sample
 - **47.2 gpt Au (1.4 oz/t), 5.39 % Zn, 12.3 % Pb**

Olympus Zone

- 300 by 200 metres (remains open in all directions - zone defined by chip and grab samples)
- **0.6 metre channel sample**
 - **1150 gpt Ag (33.55 oz/t) , 8.63 % Cu, 1.49 % Zn, 0.3 % Pb**





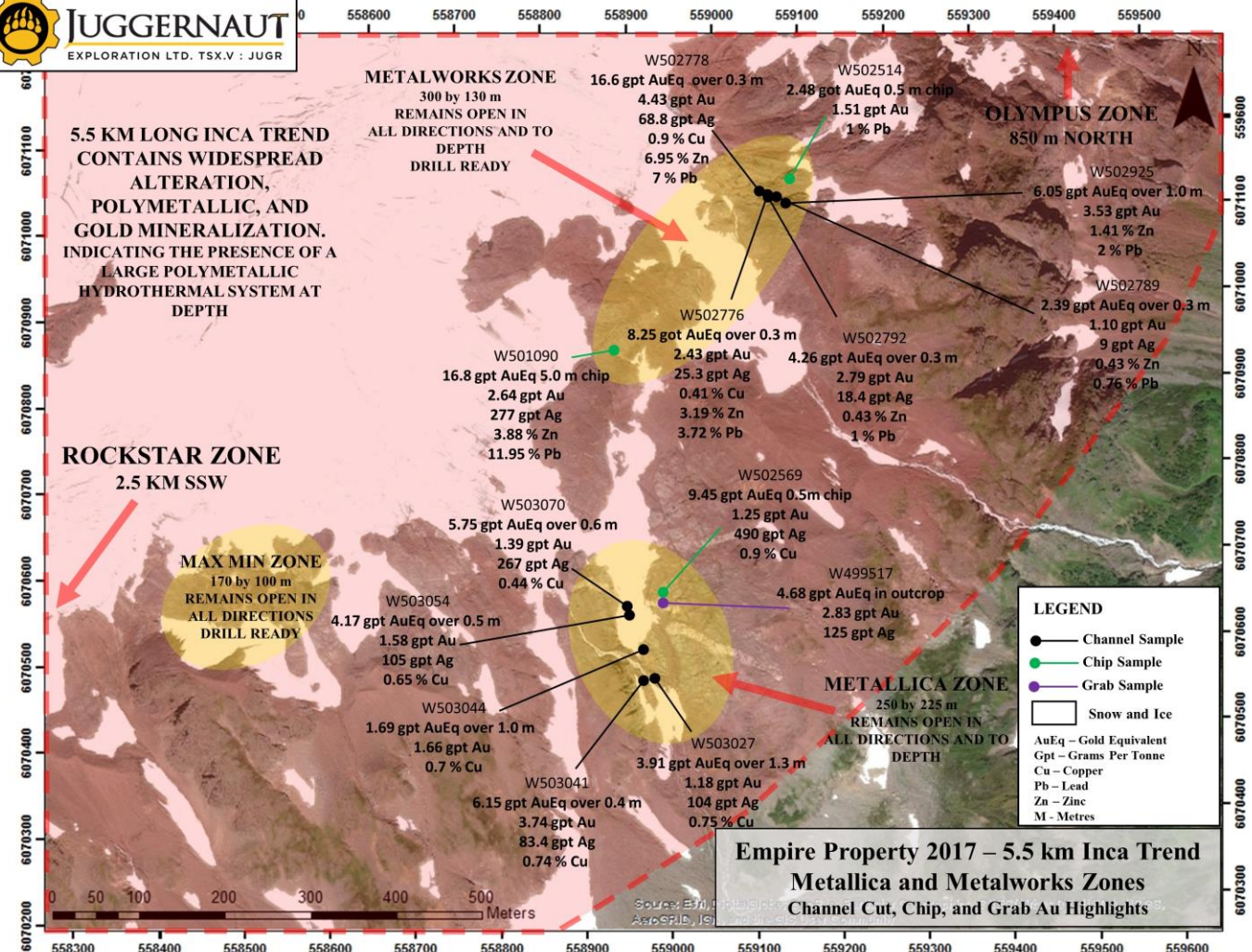
EMPIRE PROPERTY – INCA TREND HIGHLIGHTS

Metalworks Zone - Drill Ready

- 300 by 130 metres (remains open in all directions - zone defined by chip and grab samples)
- **5m chip sample returned 2.64 gpt Au, 227 gpt Ag, 3.88 % Zn, 11.95 % Pb**
 - (true thickness not known)

Metallica Zone – Drill Ready

- 250 by 225 metres (remains open in all direction - zone defined by chip and grab samples)
- 0.2 metre channel cuts from a **massive sulphide lens** returned values of **22694 gpt Ag (729 oz/t), 26.4 % Cu, 2.8 % Zn** (true thickness not known)
- Grabs from veins up to: **16.4 gpt Au, 36875 gpt Ag (1180 oz/t), 27.6 % Cu, 30 % Pb, and 34 % Zn**



EMPIRE PROPERTY – BABYLON TREND HIGHLIGHTS

Babylon

- 1.5 by 1.1 kilometres (remains open in all directions - (zone defined by chip and grab samples)
- An extensive zone of pervasive potassic alteration that is associated with polymetallic Cu-Ag mineralization

Material Metal

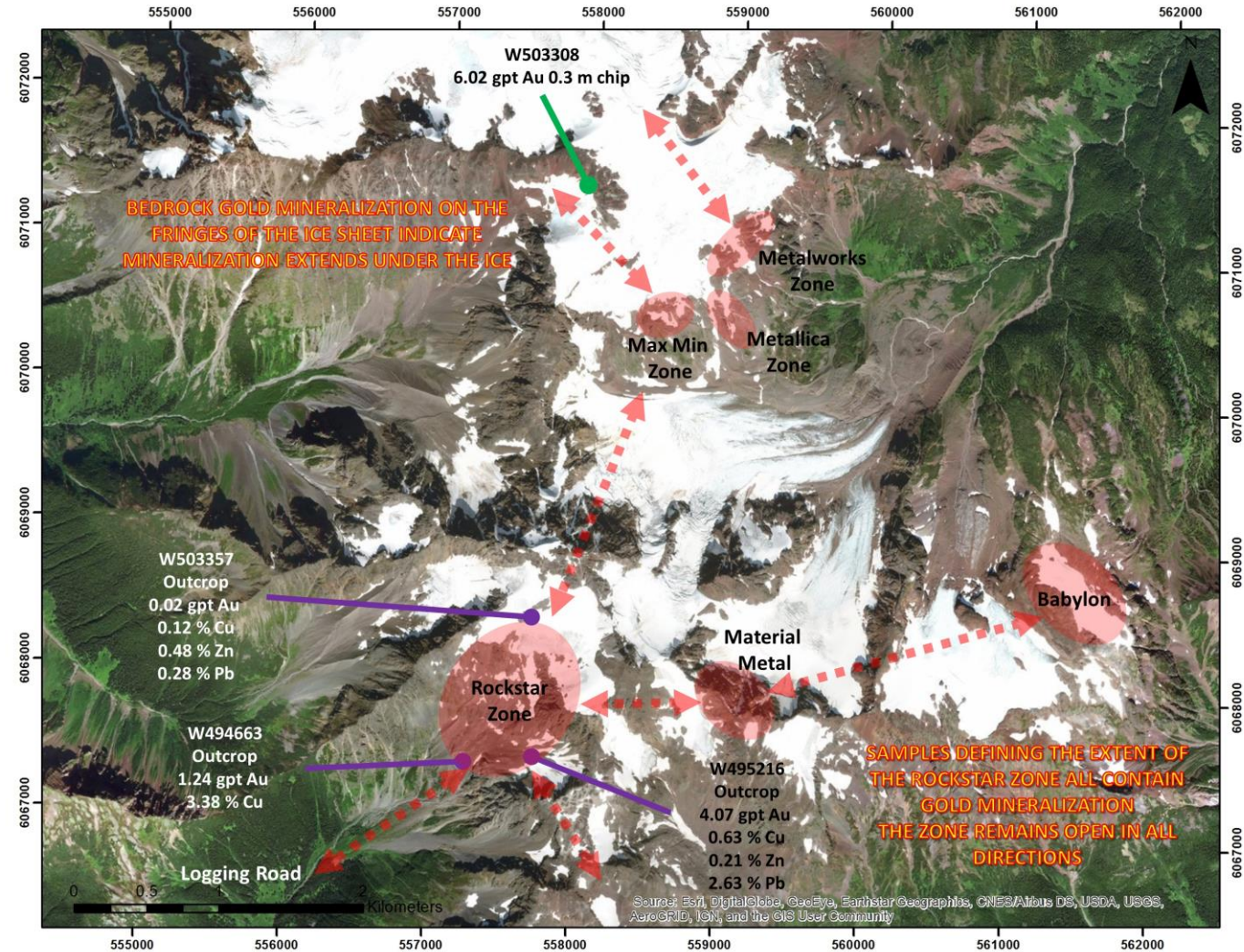
- 220 by 160 metres (remains open in all directions - (zone defined by chip and grab samples)
- 5 metre chip sample returned 0.55 % Cu and 15 gpt Au



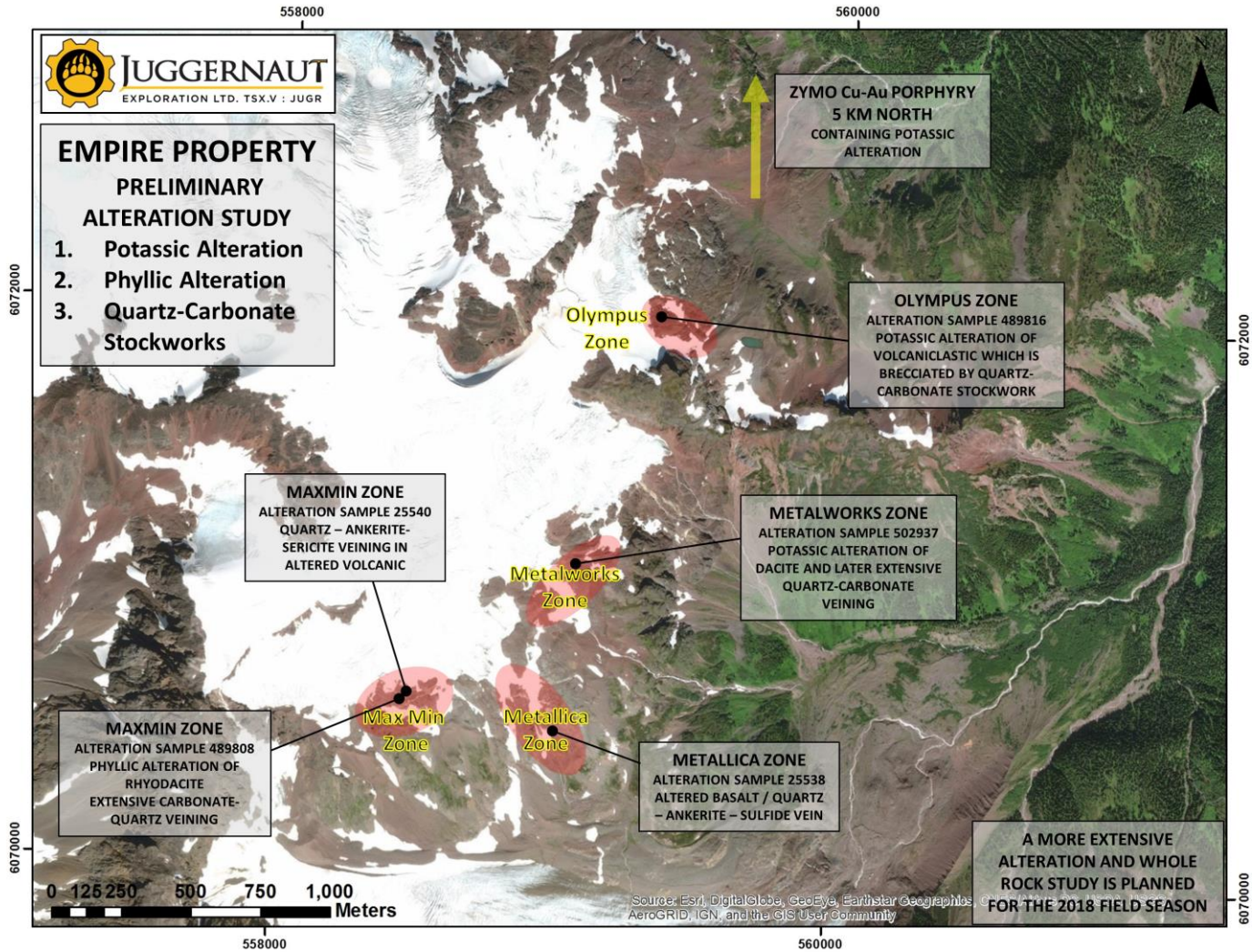
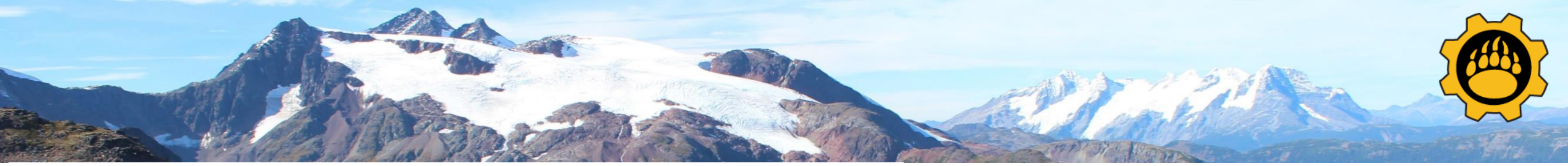
EMPIRE PROPERTY INCA TREND SUMMARY

- Empire results indicate a world class discovery in the making
- Multiple discoveries were made due to **newly exposed bedrock from glacial and snowpack abatement**
 - All the zones remain open in all directions
- The 5.5 km long Inca Trend is defined by chip, channel, and grab samples of **widespread high-grade polymetallic mineralization**
- The **mineralization** is believed to be associated with a large **polymetallic hydrothermal system**
- Multiple strong **drill-ready targets**

TSX-V: JUGR & Frankfurt: 4JE



<http://juggernautexploration.com/>

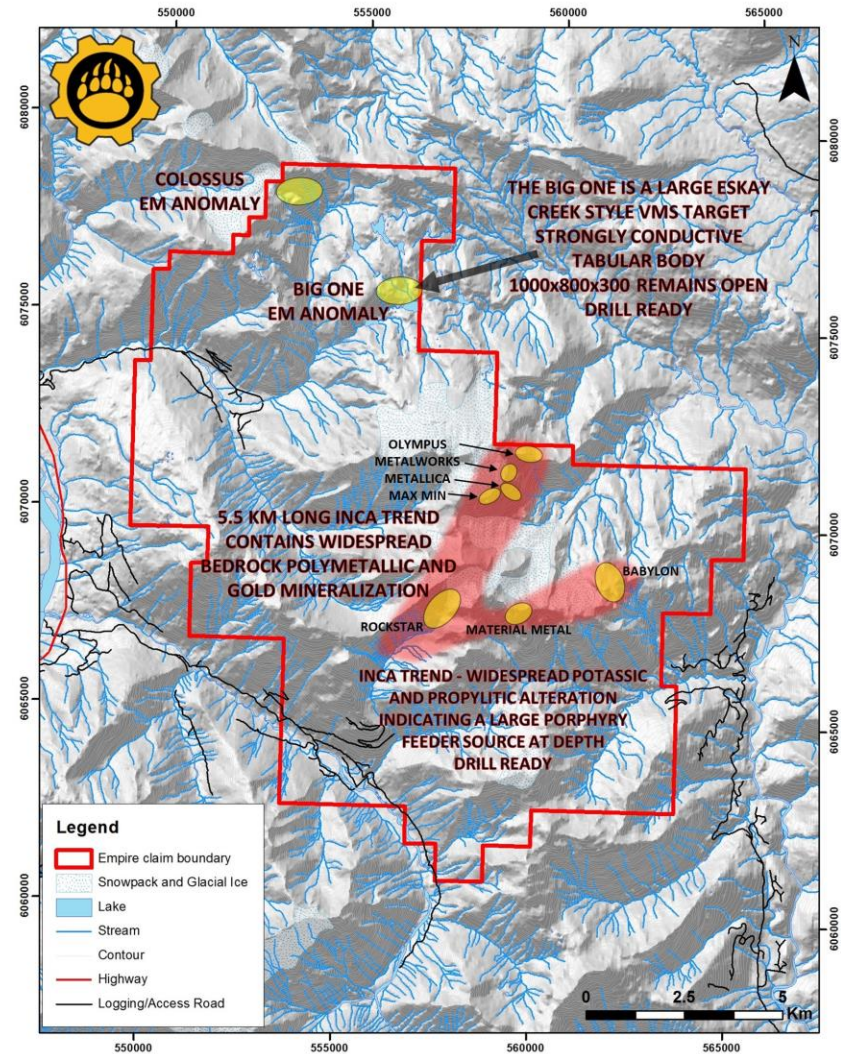


METALWORKS ZONE – Alteration Sample
Cobaltinitrite staining of dacitic volcanic
rock highlighting **pervasive potassic
alteration**



EMPIRE PROPERTY – NORTHERN REGION

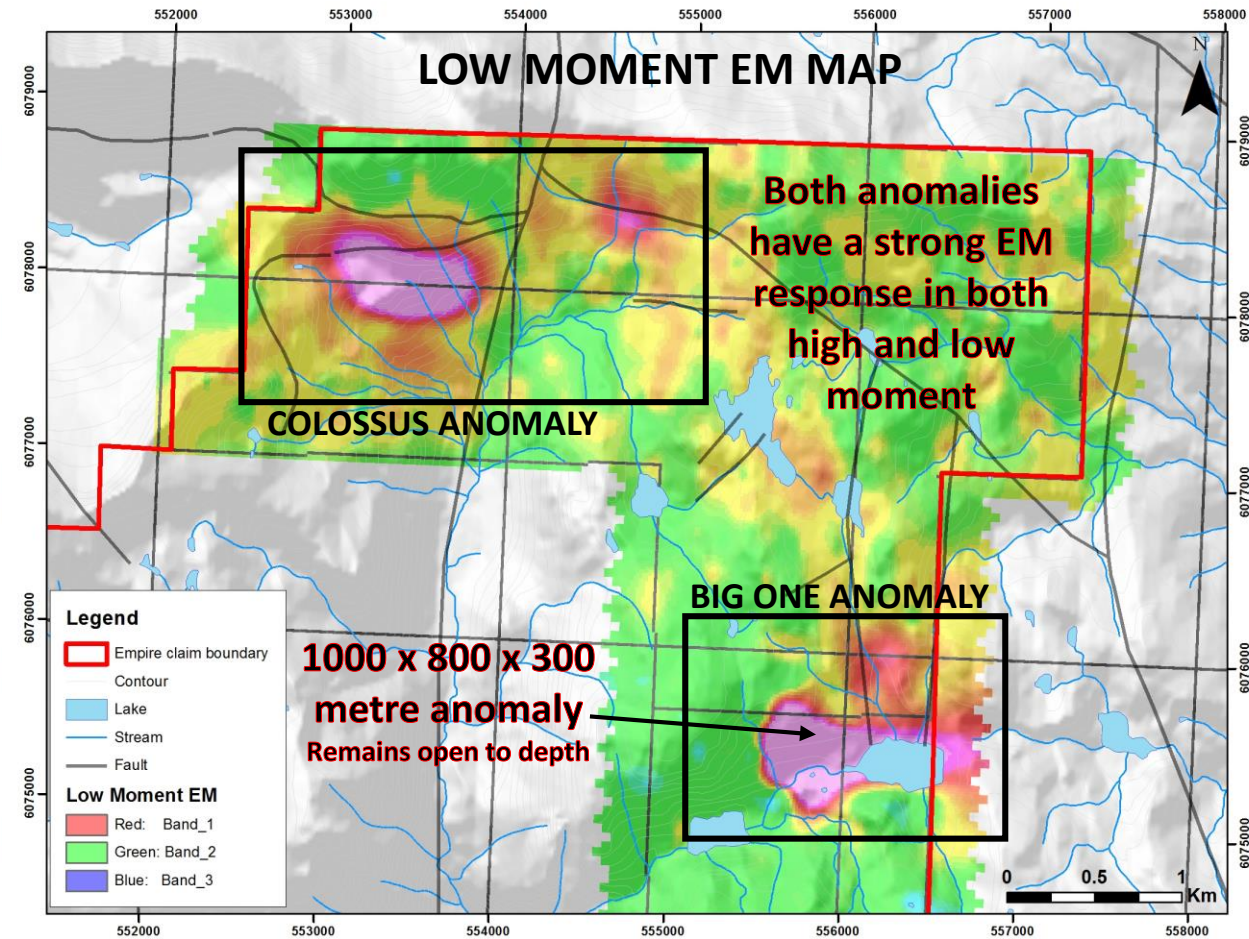
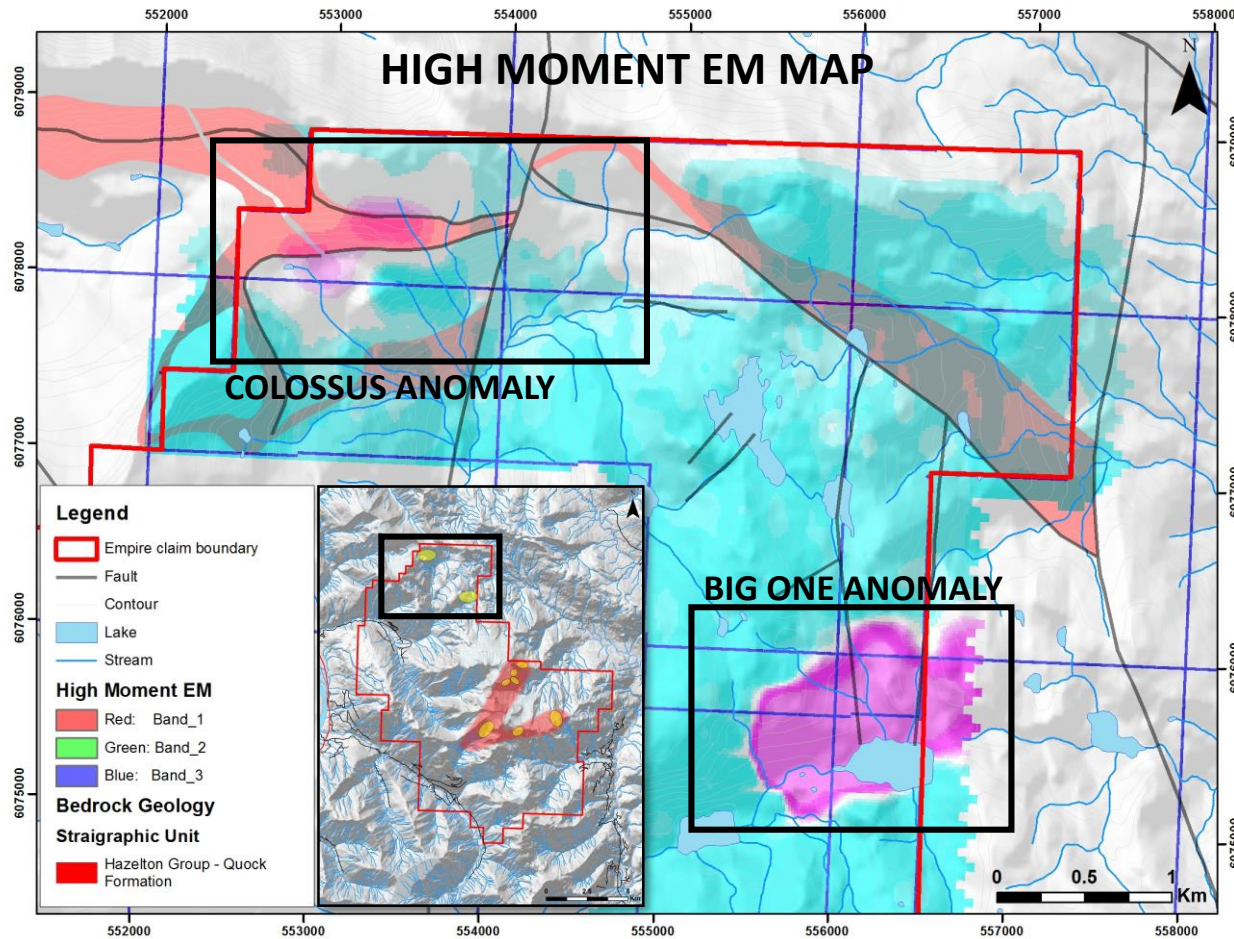
- ~ 5km north of the Inca Trend a **High-resolution SKYTEM™** survey identified **two significant electromagnetic conductive bodies** ([link to video](#))
- The **Colossus and Big One anomalies** are hosted within a sequence of Upper **Hazelton Group marine volcanics** (pillow lavas) and sediments (marine fossils) that were recently mapped by the British Columbia Geological Survey
 - The Survey concluded that the **geologic setting is contemporaneous** with the development of the **Eskay rift** to the west
 - The area is believed to have very **strong potential** for both Eskay-Creek-style **VMS** and **epithermal mineralization**





EMPIRE PROPERTY – NORTHERN REGION

High-resolution SKYTEM™ survey identified two significant electromagnetic conductive bodies





2018 EMPIRE OPPORTUNITY & OBJECTIVES



Drill Ready: Multiple high-grade polymetallic bedrock discoveries were made along the 5.5 km Inca Trend indicates a large hydrothermal porphyry feeder source at depth



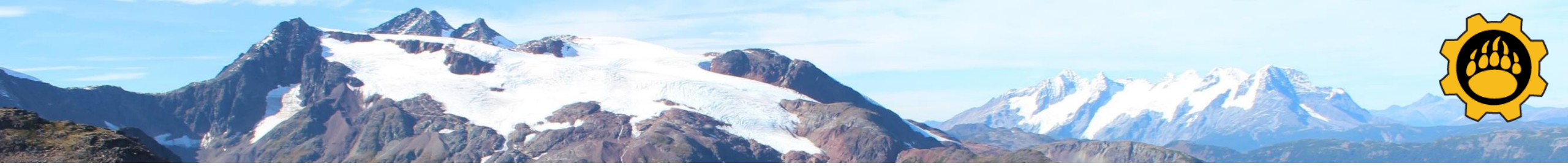
The Big One anomaly is a strongly conductive tabular body that resembles a **large VMS target** that is drill-ready



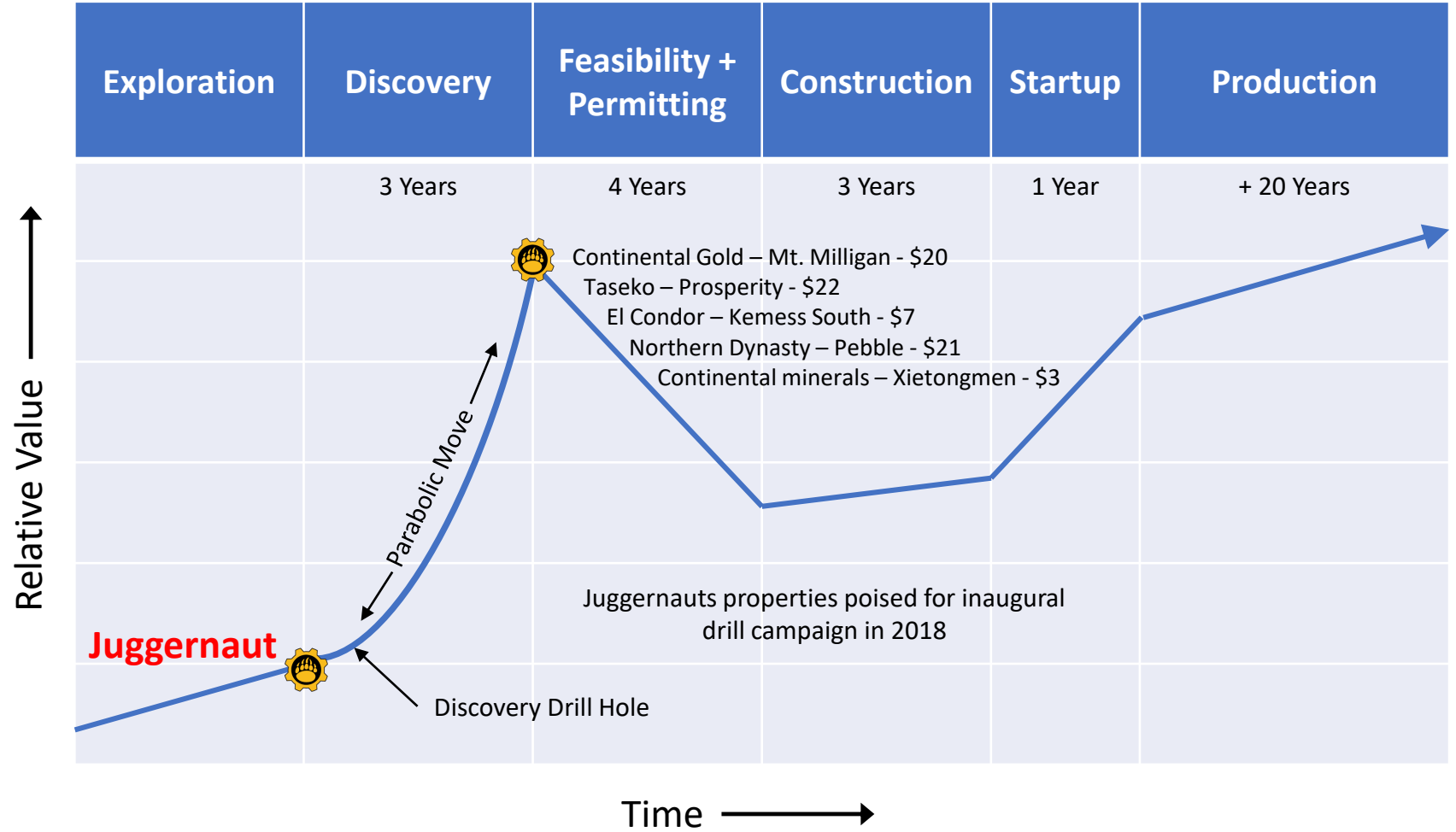
Ground geophysics, channel cutting, mapping, and prospecting to outline the full geometry of the Inca Trend



Creating shareholder wealth through continued systematic exploration that results in success



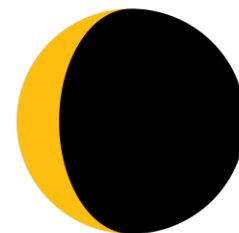
BRITISH COLUMBIA HAS A LONG HISTORY OF WEALTH CREATION IN PORPHYRY PROJECTS





PROJECT GENERATOR MODEL

- **Juggernaut owns a 20 % interest in the DSM syndicate**
- The DSM syndicate is a **project generator** focused on original discovery resulting from **glacial and snowpack recession**.
- **DSM management**, exploration, and technical teams have **over 200 years of combined experience** with a proven track record of success
- Members of the DSM Exploration team have been recognized by their peers in the industry for several significant mineral discoveries over the last 30 years, including some that have become world class mines.
- The project generator model allows for the potential of **ongoing cash and stock payments to lower dilution for Juggernaut shareholders**
- The **project generator model reduces risk** for shareholders of Juggernaut by giving them exposure to 6 new precious metal discoveries "*potential farm team*"



DSM:SYNDICATE
ON TRACK FOR DISCOVERY



Money Property

(2018 Follow-up Exploration Fully Funded by DSM)

- New **Goldzilla Zone** bedrock discovery spanning **175 by 50 metre** defined by chip and grab samples
 - *No previous work in area*
- **One day total field** time spent on the property.
- **Five bedrock grab samples** from polymetallic veins assayed **above 10 g/t Au and up to 81.5 g/t Au** (2.62 oz/t).
- Mineralized **granodiorite intrusion with a grab sample containing 6.98 g/t Au.**

Goldcrest Property

(2018 Follow-up Exploration Fully Funded by DSM)

- Brand new bedrock discovery of **750 by 100 metre Cadillac Trend** (zone defined by chip and grab samples)
 - *Remains open in all directions and no previous work in the area.*
- A **hydrothermal breccia and stockwork zone** was traced over a 50 metre area within the Cadillac Trend ([link to video](#)).
 - *Grab samples containing **anomalous gold and silver mineralization** were collected from this breccia and the zone remains open in all directions.*
- Bedrock grab samples assayed up to **3.16 g/t Au.**

Skyhigh Property

(2018 Follow-up Exploration Fully Funded by DSM)

- Polymetallic and gold mineralized bedrock define the **700-metre-long Cloud 9 Zone** that remains open in all directions. (zone defined by chip and grab samples)
- **Grab sample** from polymetallic vein material assayed **273.95 g/t AuEq.**
- **Chip samples** from quartz veins returned **42.98 and 20.73 g/t AuEq.**
- The Skyhigh Property covers **8 historic epithermal and Cu-Mo porphyry** mineral occurrences dating back to the 1990's.

Goldstar Property

(2018 Follow-up Exploration Fully Funded by DSM)

- Brand new bedrock discovery of **90 metre long Yellow Brick Road Zone** (zone defined by chip and grab samples).
 - *Remains open in all directions and no previous work in the area.*
- Total field time of **one day on the Goldstar property** – excellent untapped potential.
- **Six bedrock grab samples** from polymetallic veins contained **above 10 g/t AuEq and up to 76.25 g/t AuEq** (2.22 oz/t).



TSX-V: JUGR

For additional information on any of these properties please contact:

Dan Stuart

CEO and President, Director

Dan@juggernautexploration.com

Juggernaut Exploration Ltd

1130 West Pender Street, Suite 1010

Vancouver, BC V6E 4A4

Telephone: 604-559-8028

Fax: 604-559-8253



<http://juggernautexploration.com/>



ADDITIONAL INFORMATION

Stefan Kruse, Ph.D., P. Geo., Chief Geologist, is the qualified person as defined by National Instrument 43-101, for Juggernaut Exploration projects, and supervised the preparation of, and has reviewed and approved, the technical information in this release. Further information regarding Juggernaut's Midas and Empire properties can be sourced on-line at www.juggernautexploration.com, or by contacting Dan Stuart at 778-233-0293.

All rock, channel and talus fine samples were crushed and pulverized at ALS Canada Ltd.'s lab in Terrace, BC or in Reno Nevada. ALS is either Certified to ISO 9001:2008 or Accredited to ISO 17025:2005 in all of its locations. The resulting sample pulps were analyzed for gold by fire assay in Reno, Nevada or in Vancouver, BC. The pulps were also assayed using multi-element aqua regia digestion at ALS Canada Ltd.'s lab in Vancouver, BC. The silt samples were sieved and assayed at ALS Canada Ltd.'s lab in Vancouver, BC. The coarse reject portions of the rock, channel and talus fine samples, as well as the pulps, were shipped to J2 Syndicate's storage facility in Terrace, BC. The silt samples were disposed of after analysis. All samples were analyzed using ALS Canada Ltd.'s assay procedure ME-ICP41, a 1:1:1 aqua regia digestion with inductively-coupled plasma atomic emission spectrometry (ICP-AES) or inductively-coupled plasma mass spectrometry (ICP-MS) finish for 35 elements as well as the Au-AA24 lead-collection fire assay fusion procedure with atomic absorption spectroscopy (AAS) finish. Any results greater than 100 ppm for silver or 10,000 ppm copper, lead and zinc were additionally assayed using ALS's OG46 method particular to each element. This method used an HNO₃-HCl digestion followed by ICP-AES (or titrimetric and gravimetric analysis). Gold values of greater than 10 ppm Au were assayed by the Au-GRA22 method which includes a fire-assay fusion procedure with a gravimetric finish. Blanks and duplicates QA/QC samples were inserted into channels sample laboratory batches. Additionally, and 10% sub-sample of pulp and reject material was sent to Activation Laboratories in Ancaster Ontario, for check-analysis.

The reader is cautioned that grab samples are spot samples which are typically, but not exclusively, constrained to mineralization. Grab samples are selective in nature and collected to determine the presence or absence of mineralization and are not intended to be representative of the material sampled.